



BAA-Compliant LED Lighting Catalog

orion™

Table of Contents

Our Mission	3
LED Lighting Product Categories	4
DesignLights Consortium® (DLC®)	5
Orion and BAA Compliance.	6
Certifications Overview	7 – 8
Interior LED Lighting Solutions	9-26
Lighting Controls	27 – 28
Energy-As-A-Service	29
Maintenance Services	30
EV Charging Services	31

Our Mission

Through environmentally responsible practices and innovation, Orion provides energy-efficient LED lighting systems to help companies nationwide save on operating expenses while improving their lighting.

Core Strengths

We set ourselves apart with:



Superior lighting products



Project support from beginning to end and beyond



Quick quote turnaround time



Fast shipping of components made locally or regionally



Socially and environmentally responsible practices



Flexibility across projects

Reduced Carbon Footprints and Returns on Investment

Orion believes in a sustainable future and works to reduce our own carbon footprint while helping customers reduce theirs. Not only does this help the environment, it also achieves cost savings in short order, with efficient LED lights paying for themselves in just a few years.

Contact Us

Ready to start saving on energy costs with an LED retrofit? Or maybe you're looking for the best LED lighting for a new construction project?

[Let's connect](#) and discuss how we can help your facility shine.

LED Lighting Product Categories

Unlock your ideal solution with our range of product options. Tailor your choice to your needs and enjoy exceptional quality and performance at every level.

ISON™

THE HIGHEST STANDARD OF PERFORMANCE AND QUALITY TO PROVIDE BEST-IN-CLASS RETURN ON INVESTMENT AND LOWEST PAY-BACK PERIOD.

LPW

Highest In Industry

CONTROLS

Capable of Advanced Controls

L70

100,000+ Hours

FEATURES

Best-in-Class

PRICE

Premium

CERTIFICATIONS

Best-in-Class

OPERATING TEMPS

Best-in-Class per Product Application

HARRIS

ABOVE-AVERAGE PERFORMANCE WITH A COMPLETE ARRAY OF FEATURES AND OPTIONS TO MEET MOST DESIRED INDUSTRY STANDARDS.

LPW

Exceeds Industry Standards

CONTROLS

Capable of Advanced Controls

L70

100,000 Hours

FEATURES

Best-in-Class

PRICE

Competitive

CERTIFICATIONS

Best-in-Class

OPERATING TEMPS

45°-55°C Depending on Application

DesignLights Consortium® (DLC®)

The DLC® Qualified Product Listing has high-quality, energy-efficient lighting products that qualify for rebates in utility and energy efficiency programs.



DLC® LISTED STANDARD

Lighting products that meet the basic energy efficiency and performance requirements set by the DLC®. They are designed to provide significant energy savings compared to traditional lighting solutions. DLC® Listed Standard products meet certain criteria for efficacy, color quality, and other performance factors.



DLC® LISTED PREMIUM

Lighting products go beyond the basic requirements established by the DLC®. They are designed to achieve even higher energy savings and offer superior light quality and controllability. DLC® Listed Premium products demonstrate a significant improvement in terms of energy efficiency, color accuracy, and other performance metrics compared to DLC® Listed Standard products. They represent the top tier of energy-efficient lighting solutions.

Rebate Eligibility

Energy-efficient lights qualify for money-saving incentives offered by utility companies and governments. These incentives aim to encourage the use of efficient lighting solutions.

To qualify, choose any Orion DLC®-listed lighting products to help offset the cost of upgrading to energy-efficient lighting. It's a straightforward way to save money while contributing to a more sustainable future.

Need Help Navigating the Rebate Process?
Contact our customer service team at **920-482-0520**.

BAA Compliant Product Categories



The BAA Compliance of Orion's LED products allows direct purchase by the federal government to use these products in their facilities. Orion offers a multitude of products in different applications to meet these requirements for a fully BAA Compliant lit facility.

HIGH BAY



ENCLOSED HIGH BAY



LINEAR/LINEAR RETROFIT



HEALTHY LIFE/UV-C



RETROFIT LINEAR HIGH BAY



TROFFER/TROFFER RETROFIT



CONTACT US

2210 Woodland Drive,
Manitowoc, WI 54220
1.800.660.9340 • info@oesx.com



Contract Holder
Contract # GS-07F-232AA

NAICS CODES

238210	335999	334512
541330	334290	561210SB

Certifications Overview



NSF

NSF (National Sanitation Foundation) evaluated and tested fixtures per NSF/ANSI 2 (Food Equipment regulations) for use in non-food zone and splash zone locations. Non-food zones are areas where contact of food with the fixture is unexpected. Splash zones are areas where spills and splashes from liquids used in the processing or cleaning procedure may get on the surface of the fixtures.



TAA

The United States Trade Agreements Act (TAA) states that in order to be considered TAA-compliant, a fixture must have a minimum of 50% of its total manufacturing cost coming from either the United States or a country designated under the TAA. The product has undergone substantial transformation in the US or a TAA-designated country.



BABA

BABA establishes a domestic preference for Federal financial assistance obligated for infrastructure projects. The BABA preference applies to three separate product categories including manufacturing that include LED lighting products.



BAA

The Buy American Act (BAA) is a federal law that pertains to goods used in the United States. It establishes a minimum requirement for the percentage of materials or parts sourced from the US in manufactured items. This product is manufactured in Wisconsin and is a COTS product.



DLC® PREMIUM

The fixture is DLC® Premium compliant. It has been evaluated and certified based on light quality, performance, lifespan, and enhanced energy efficiency. Within this classification, "Premium" signifies a higher level of performance compared to the "Standard" classification. In both the United States and Canada, the majority of utility companies mandate that fixtures must hold a DLC® rating to be eligible for rebates.



DLC® STANDARD

The fixture is DLC® Standard compliant. It has been evaluated and certified based on light quality, performance, lifespan, and enhanced energy efficiency. In both the United States and Canada, the majority of utility companies mandate that fixtures must hold a DLC® rating to be eligible for rebates.



UL CERTIFIED

The fixture has been tested and met defined requirements by UL (Underwriter Laboratories) standards for fire safety and electrical safety. For use both in U.S. and Canada.

Certifications Overview



UL DAMP RATED

The fixture is tested and approved by UL for areas that are regularly exposed to moisture and condensation. It does not cover direct water contact. Typically used in manufacturing areas exposed to humidity, moisture and condensation. They can also be used outdoors in areas that are protected from direct rain or snow exposure.



UL WET RATED

The fixture is tested and approved by UL to be installed anywhere that liquids will come in direct contact. Typically used for outdoor lighting.

IP65

IP65

This fixture is IP-rated (Ingress Protection code) rated for protection against dust and from water jets from any direction. IP code are defined by IEC 60529 International Standard.

IP66

IP66

This fixture is IP-rated for protection against dust and water resistant against powerful jets. IP code are defined by IEC 60529 International Standard.

IP67

IP67

This fixture is IP-rated for protection against dust and protected from immersion (up to 1m) for a limited time. IP code are defined by IEC 60529 International Standard.



IK08

This fixture has an IK08 rating, signifying its ability to withstand impact up to 5 joules or the equivalent of a 1.7kg (3.7 lb) mass dropped from a height of 300mm (11.8 in) onto the surface. These IK ratings adhere to the specifications outlined in the IEC 62262 International Standard.



IK10

This fixture holds an IK10 rating, indicating its capacity to provide Enclosure Protection against impact of up to 20 joules, equivalent to the impact of a 5kg (11 lb) mass dropped from a height of 400mm (15.7 in) onto the surface. These IK ratings are established according to the IEC 62262 International Standard.

The background image is a large, open industrial or warehouse space with a high ceiling featuring exposed steel beams and numerous fluorescent light fixtures. On the left, there are rows of white storage cabinets and a red workbench. In the foreground, there are several white tables with blue chairs, suggesting a classroom or meeting area. A large, semi-transparent circular graphic with a dotted white border and a blue-to-green gradient arc is centered over the image. The text "Interior LED Lighting Solutions" is written in white, sans-serif font within this circle.

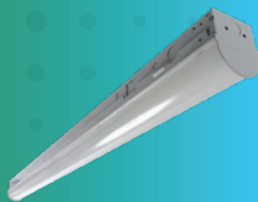
Interior LED Lighting Solutions



PG 11

HIGH BAY / LOW BAY

Ideal fixtures for warehouse, manufacturing, and inventory management facilities with varying ceiling heights up to 40'.



PG 15

LINEAR

Commonly used in commercial and retail settings. These fixtures are easy to install and can be grouped or continuously run to create lighting uniformity.



PG 17

LINEAR RETROFIT

Reduce your energy expenses by effortlessly upgrading from outdated fluorescent technology to LED using our user-friendly LED linear retrofit kits. These kits not only ensure a long fixture life but also help you save on labor costs during the retrofitting process to LED.



PG 18

ENCLOSED HIGH BAYS / VAPORTIGHTS

Demanding conditions and harsh environments, making them ideal for use in manufacturing, food preparation, and food processing facilities. Their durability ensures reliable performance even in challenging settings.



PG 22

HEALTHY LIFE / UV-C

In high-traffic environments where customer safety is a top priority, our advanced LED UV-C light spectrum technology enables continuous air sanitization. This cutting-edge technology effectively disinfects areas like offices, classrooms, and healthcare settings.



PG 23

RETROFIT LINEAR HIGH BAY

Retrofits existing T12/T8 linear high bay fluorescent fixtures to LED, in high ceiling retail settings and inventory management facilities with varying ceiling heights up to 40'.



PG 24

TROFFER

Available in various size fixtures, troffer fixtures are utilized for drop-in ceilings and surface-mount applications where even light distribution is needed. Typically used in commercial and office settings.



PG 26

TROFFER RETROFIT

Designed for retrofitting existing T12/T8 fluorescent troffers with an easy retrofit bracket system, our troffer retrofit allows for quick installation in under two minutes.

LED HIGH BAY

ISON™ LED HIGH BAY FIXTURE, GEN 2

LMAF2 SPECIFICATIONS

Fixture Sizes

- 4' or 8'

Lumen Range / LPW

- 9,000 or 18,000 Lumens, up to 171 LPW

Factory Installed Features and Options

- 120v-277v, 347v, and 480v
- 80 CRI; 4000K CCT
- No Lens or Acrylic Frosted Lens Available

Control Types Available

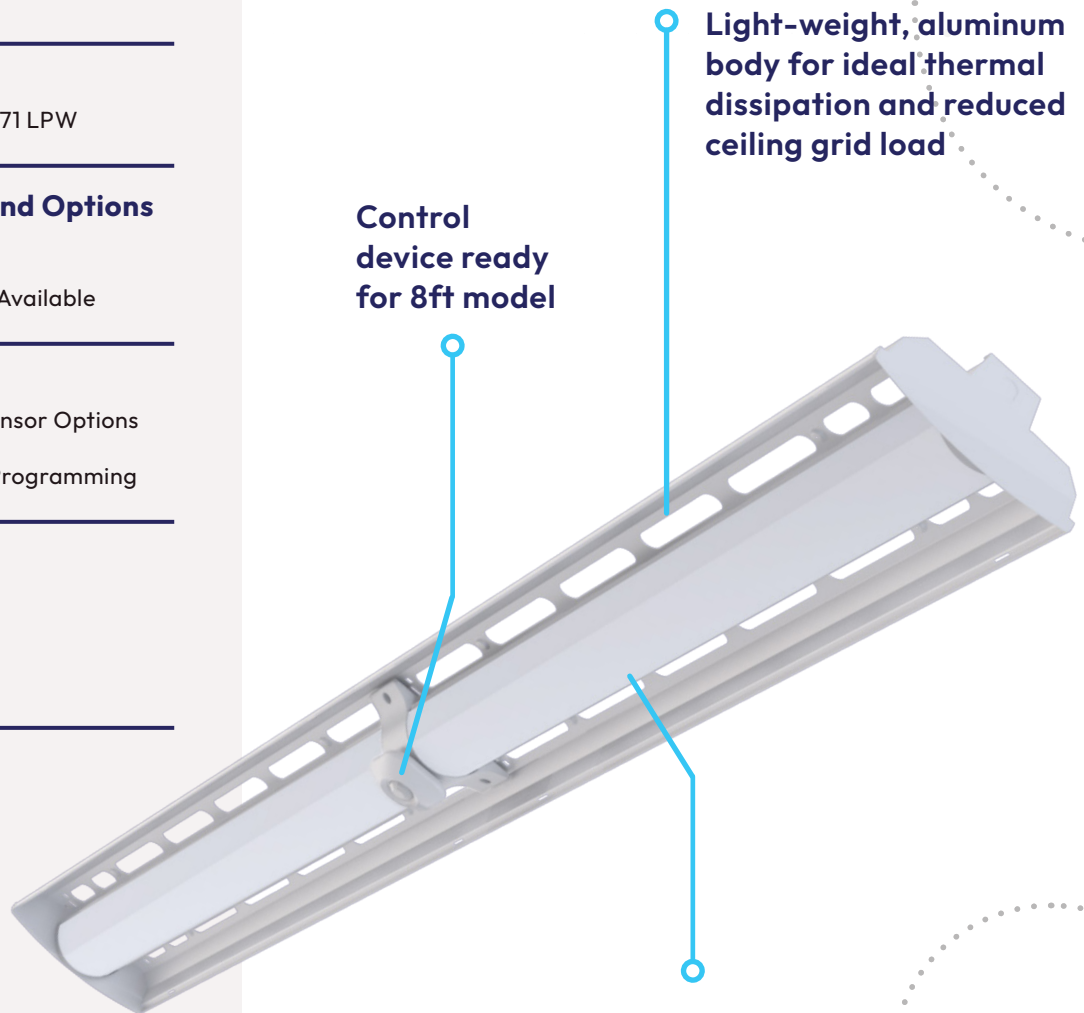
- Factory Installed Control and Sensor Options
- On Site Network Programming
- Internet/Cloud Based Network Programming

Certifications / Listings*

- Buy American Act Compliant
- UL/cUL Listed
- UL Damp Rated
- DLC® Listed Standard

Mounting Options

- Suspended Mounting



Light-weight, aluminum body for ideal thermal dissipation and reduced ceiling grid load

Control device ready for 8ft model

No lens or frosted acrylic lens to provide glare reduction in the environment

*Varies by fixture configuration

LED HIGH BAY

HARRIS LED HIGH BAY STAR LINE, GEN 2

HHSL2 SPECIFICATIONS

Fixture Sizes

- 2' or 4'

Lumen Range / LPW

- 9,000 to 72,000 Lumens, up to 185 LPW

Factory Installed Features and Options

- 120v-277v, 347v, and 480v
- 80 CRI; 3500K, 4000K, and 5000K
- Four Light Distribution Types: No Lens, Acrylic General Distribution, Acrylic Aisle Distribution, and Acrylic Medium Distribution
- 6kV/3kA Surge Protection Standard
- 20kV/10kA Additional Surge Protection Optional
- Orange Painted End Cap for Emergency Fixture Identifier
- High Ambient Operating Temp. Available to 65°C
- Battery Backup Available

Field Installed Options

- Battery Backup Kit
- Wireguard Kit

Control Types Available

- Field or Factory Installed Control and Sensor Options
- Manual Programming Sensors
- Remote Programming Sensors
- Onsite Network Programming
- Internet/Cloud Based Network Programming

Certifications / Listings*

- Buy American Act Compliant
- UL/cUL Listed
- UL Damp Rated
- DLC® Listed Standard and Premium
- BABA Compliant
- CA Title 20 Compliant Battery Backup Available

Mounting Options

- Suspended Mounting
- Surface Mounting
- Rigid Mounting

Versatile hanging options

Multiple power connection options

Four light distribution types to meet your application needs

Narrow, lightweight aluminum design for optimal heat dissipation with ease handling in the field that reduces installation time and cost



*Varies by fixture configuration

LED HIGH BAY

HARRIS LED HIGH BAY STAR LINE HIGH EFFICACY, GEN 2

HHSL2 HE SPECIFICATIONS

Fixture Sizes

- 2' or 4'

Lumen Range / LPW

- 9,000 to 45,000 Lumens, up to 198 LPW

Factory Installed Features and Options

- 120v-277v, 347v, and 480v
- 80 CRI; 4000K and 5000K
- Four Light Distribution Types: No Lens, Acrylic General Distribution, Acrylic Aisle Distribution, and Acrylic Medium Distribution
- Multiple Power Connection Options
- 6kV/3kA Surge Protection Standard
- 20kV/10kA Additional Surge Protection Optional
- Orange Painted End Cap for Emergency Fixture Identifier
- High Ambient Operating Temp. Available to 65°C
- Battery Backup Available

Field Installed Options

- Battery Backup Kit
- Wireguard Kit

Control Types Available

- Field or Factory Installed Control and Sensor Options
- Manual Programming Sensors
- Remote Programming Sensors
- Onsite Network Programming
- Internet/Cloud Based Network Programming

Certifications / Listings*

- Buy American Act Compliant
- UL/cUL Listed
- UL Damp Rated
- DLC® Listed Standard and Premium
- CA Title 20 Compliant Battery Backup Available

Mounting Options

- Suspended Mounting
- Surface Mounting
- Rigid Mounting

Wireguard kits available for protection when exposed to potential impact

Narrow, light-weight aluminum design for optimal with ease of handling in the field that reduces installation time and labor costs

Four light distribution types to meet your application needs

High efficacy chips for optimal performance



*Varies by fixture configuration

LED HIGH BAY

HARRIS LED PATRIOT SLIMLINE™ HIGH BAY, GEN 2

HBHS2 SPECIFICATIONS

Fixture Sizes

- 4' Standard

Lumen Range / LPW

- 12,000 to 30,000 Lumens, up to 181 LPW

Factory Installed Features and Options

- 120v-277v, 347v, and 480v
- 80 CRI; 4000K and 5000K
- Two Light Distribution Types: No Lens or Frosted Acrylic Lens
- Multiple Power Connection Options
- 6kV/3kA Surge Protection Standard
- 20kV/10kA Additional Surge Protection Optional
- Orange Painted End Cap for Emergency Fixture Identifier
- Battery Backup Available

Field Installed Options

- Wireguard Kits
- Lens Install Kits
- External Transformers for High Voltage 347v/480v Installation

Control Types Available

- Factory or Field Installed Controls and Sensors
- Manual Programming Sensors
- Remote Programming Sensors
- On Site Network Programming Sensors
- Internet/Cloud Based Network Programming

Certifications / Listings*

- Buy American Act Compliant
- UL/cUL Listed
- UL Damp Rated
- DLC® Listed Standard
- DLC® Listed Premium
- CA Title 20 Compliant Battery Backup Available

Mounting Options

- Suspended Mounting
- Surface Mounting
- Rigid Mounting

Wireguard kits available for protection when exposed to potential impact

Multiple configurable power connection options; different whip lengths for less installation time

Narrow I-Frame design for easy install in tight spaces

Field installable lens kit available to add glare reduction in the field if needed

*Varies by fixture configuration

LED LINEAR

HARRIS LED MULTIPURPOSE LINEAR, GEN 2

MPHL2 SPECIFICATIONS

Fixture Sizes

- 4' or 8'

Lumen Range / LPW

- 2,000 to 12,000 Lumens, up to 168 LPW

Factory Installed Features and Options

- 120v-277v and 347v
- 80 CRI; 3500K, 4000K, and 5000K
- Two Light Distribution Types: No Lens and Acrylic Frosted Lens
- Multiple Power Connection Options
- 10kA/5kV Additional Surge Protection
- Continuous Run System
- Plastic End Caps
- Battery Backup Available

Field Installed Options

- Wireguard Kit
- Tandem Kit
- Battery Backup Kit

Control Types Available

- Factory or Field Installed Control and Sensor Options
- Manual Programming Sensor
- Remote Programming Sensor
- Remote Programming Sensor with Zoning
- On Site Network Programming
- Internet/Cloud Based Network Programming

Certifications / Listings*

- Buy American Act Compliant
- UL/cUL Listed
- UL Listed Damp
- DLC® Listed Standard
- BABA Compliant
- CA Title 20 Compliant Battery Backup Available

Mounting Options

- Surface Mounting
- Suspended Mounting
- Continuous Run



Plastic end caps available

Innovative design allows for continuous run between fixtures

Fixture wireguard kit for field install for rugged environments that easily attaches to the fixture housing

Wire harness option provides left, right and center electrical connection for quick connect system

*Varies by fixture configuration

LED LINEAR

HARRIS LED STRIP LUMINAIRE, GEN 2

SFHC2 SPECIFICATIONS

Fixture Sizes

- 4' or 8'

Lumen Range / LPW

- 2,000 to 10,000 Lumens, up to 182 LPW

Factory Installed Features and Options

- 120v-277v
- 80 CRI; 3500K, 4000K, and 5000K
- Three Light Distribution Options: No Lens, Frosted Acrylic 2' Lens, Frosted Acrylic 3' Lens
- Multiple Power Connection Options
- Battery Backup Available

Field Installed Options

- Wireguard Kit

Control Types Available

- Factory and Field Installed Sensor and Controls Available
- Manual Programming Sensors
- Remote Programming Sensors
- Remote Programming with Zoning Sensors
- On Site Network Programming
- Internet/Cloud Based Network Programming

Certifications / Listings*

- Buy American Act Compliant
- UL/cUL Listed
- DLC® Listed Standard
- BABA Compliant
- CA Title 20 Compliant Battery Backup Available

Mounting Options

- Surface Mounting
- Suspended Mounting

Multiple fixture knockouts for quick connection to power

Can be tandem mounted to create electrical raceway between fixtures

Fixture comes with installation tethers to hold cover in place for one person installation

Fixture wireguard kit for field install for rugged environments that easily attaches to the fixture housing



*Varies by fixture configuration

LED LINEAR RETROFIT

HARRIS LED STRIP RETROFIT, GEN 2

SFHR2 SPECIFICATIONS

Fixture Sizes

- 4' or 8' Length, 4.25" Width or 5.00" Width Retrofit Kits

Lumen Range / LPW

- 2,000 to 10,000 Lumens, up to 182 LPW

Factory Installed Features and Options

- 120v-277v
- 80 CRI; 3500K, 4000K, and 5000K
- Three Light Distribution Options: No Lens, Frosted Acrylic 2' Lens, Frosted Acrylic 3' Lens
- Battery Backup Available

Field Installed Options

- Wireguard Kits

Control Types Available

- Factory and Field Installed Sensor and Controls Available
- Manual Programming Sensors
- Remote Programming Sensors
- Remote Programming with Zoning Sensors
- On Site Network Programming
- Internet/Cloud Based Network Programming

Certifications / Listings*

- Buy American Act Compliant
- UL/cUL Listed
- DLC® Listed Standard
- BABA Compliant
- CA Title 20 Compliant Battery Backup Available

Fixture wireguard kit for field install for rugged environments available that easily attaches to the existing fixture housing

Can be tandem mounted to create electrical raceway



Fixture comes with installation tethers to hold cover in place for one person installation

*Varies by fixture configuration

LED VAPORTIGHT

ISON™ LED VAPORTIGHT NARROW BODY, GEN 2

VTON2 SPECIFICATIONS

Fixture Sizes

- 4' or 8'

Lumen Range / LPW

- 3,000 to 20,000 Lumens, up to 165 LPW

Factory Installed Features and Options

- 120v-277v, 347v, and 480v
- 80 CRI; 4000K and 5000K
- Acrylic, Impact Resistant, Ribbed Frosted Lens
- Multiple Power Connection Options
- 6kV/3kA Surge Protection Standard
- 20kV/10kA Additional Surge Protection Optional
- Cold Temperature Option (-40C)
- Battery Backup Available

Control Types Available

- Factory Installed Control and Sensor Options
- Manual Programming Sensors
- Remote Programming Sensors

Certifications / Listings*

- Buy American Act Compliant
- UL/cUL Listed
- UL Wet Listed
- IP67
- IP66 When Using WSxx and WBxx Sensors
- IP65 When Using WWxx Sensor
- NEMA 4X Housing
- UL 5VA (f1) Fiberglass Housing
- High Pressure Washdown Up To 1500 PSI
- DLC® Listed Standard
- BABA Compliant
- CA Title 20 Compliant Battery Backup Available

Mounting Options

- Surface Mounting (Standard – Factory Shipped)
- Suspended Mounting

Durable and lightweight white fiberglass body

Configurable power connections for fast installation

Cold temperature option for cold storage environments

Marine Grade Stainless Steel latches and mounting brackets to withstand corrosion

Durable, impact resistant acrylic frosted lens to withstand tough environments

*Varies by fixture configuration

LED VAPORTIGHT

ISON™ LED VAPORTIGHT NARROW BODY NSF/ANSI STANDARD 2, GEN 2

VTON2 SPECIFICATIONS

Fixture Sizes

- 4' or 8'

Lumen Range / LPW

- 3,000 to 20,000 Lumens, up to 165 LPW

Factory Installed Features and Options

- 120v-277v, 347v, and 480v
- 80 CRI; 4000K and 5000K
- Acrylic, Impact Resistant, Ribbed Frosted Lens
- Multiple Power Connection Options
- 6kV/3kA Surge Protection Standard
- 20kV/10kA Additional Surge Protection Optional
- Cold Temperature Option (-40C)
- Battery Backup Available

Certifications / Listings*

- Buy American Act Compliant
- NSF/ANSI Standard 2
- UL/cUL Listed
- UL Wet Listed
- IP67
- NEMA 4X Housing
- UL 5VA (f1) Fiberglass Housing
- High Pressure Washdown Up To 1500 PSI
- DLC® Listed Standard
- CA Title 20 Compliant Battery Backup Available

Mounting Options

- Surface Mounting (Standard – Factory Shipped)



*Varies by fixture configuration

LED VAPORTIGHT

ISON™ LED VAPORTIGHT WIDE BODY, GEN 2

VTOD2 SPECIFICATIONS

Fixture Sizes

- 2' or 4'

Lumen Range / LPW

- 13,000 to 38,000 Lumens, up to 167 LPW

Factory Installed Features and Options

- 120v-277v, 347v, and 480v
- 80 CRI; 4000K and 5000K
- Frosted Acrylic Lens Standard
- Multiple Power Connection Options
- 6kV/3kA Surge Protection Standard
- 20kV/10kA Additional Surge Protection Optional
- Cold Temperature Option (-40C)
- Battery Backup Available

Control Types Available

- Factory Installed Control and Sensor Options
- Manual Programming Sensors
- Remote Programming Sensors

Certifications / Listings*

- Buy American Act Compliant
- UL/cUL Listed
- UL Wet Listed
- IP67 for 4' Fixtures
- IP69 for 2' Fixtures
- IP66 When Using WSxx and WBxx Sensors
- IP65 When Using WWxx Sensor
- NEMA 4X Housing
- UL 5VA (f1) Fiberglass Housing
- High Pressure Washdown Up To 1500 PSI
- DLC® Listed Standard
- BABA Compliant
- CA Title 20 Compliant Battery Backup Available

Mounting Options

- Surface Mount (Standard – Factory Shipped)
- Suspended Mounting
- Rigid Mounting

*Varies by fixture configuration

Cold temperature option for cold storage environments

Configurable power connections for fast installation



Marine Grade Stainless Steel latches and mounting brackets to withstand corrosion

Durable acrylic lens and reinforced fiberglass body built to withstand tough environments

LED VAPORTIGHT

ISON™ LED VAPORTIGHT WIDE BODY NSF/ANSI STANDARD 2 CERTIFIED, GEN 2

VTOD2 SPECIFICATIONS

Fixture Sizes

- 2' or 4'

Lumen Range / LPW

- 13,000 to 38,000 Lumens, up to 167 LPW

Factory Installed Features and Options

- 120v-277v, 347v, and 480v
- 80 CRI; 4000K and 5000K
- Frosted Acrylic Lens Standard
- Multiple Power Connection Options
- 6kV/3kA Surge Protection Standard
- 20kV/10kA Surge Protection Available
- Cold Temperature Option (-40C)
- Battery Backup Available

Certifications / Listings*

- Buy American Act Compliant
- NSF/ANSI Standard 2
- UL/cUL Listed
- UL Wet Listed
- IP67 for 4' Fixtures
- IP69 for 2' Fixtures
- NEMA 4X Housing
- UL 5VA (f1) Fiberglass Housing
- High Pressure Washdown Up To 1500 PSI
- DLC® Listed Standard
- CA Title 20 Compliant Battery Backup Available

Mounting Options

- Surface Mount (Standard – Factory Shipped)
- Suspended Mounting
- Rigid Mounting

Cold temperature option for cold storage environments

Configurable power connections for fast installation



Marine Grade Stainless Steel latches and mounting brackets to withstand corrosion

Durable acrylic lens and reinforced fiberglass body built to withstand tough environments

*Varies by fixture configuration

UV-C

ISON™ PUREMOTION UV-C

INPUT SPECIFICATIONS

Fixture Sizes

- 2' x 2' or 2' x 4'

Factory Installed Features and Options

- 120v-277v
- White, Black, and Silver Fixture Colors
- Four Panel Options: Aluminum Panel, Smooth White Ceiling Tile, Fissured Pattern Print Ceiling Tile, and Custom Logo Print Ceiling Tile
- 20kV/10kA Additional Surge Protection
- Antimicrobial Britex™ Coating Standard
- Quiet Axial Fans Draw the Air in so UVC LEDs can Sterilize it

Field Installed Options

- Panel Replacement Kit

Certifications / Listings*

- Buy American Act Compliant
- UL/cUL Listed
- UL Listed for Damp Locations
- EPA Establishment #9844-WI-1

Mounting Options

- Recessed Mount
- Surface Mount
- Suspended Mount

Britex™ coating comes standard with antimicrobial properties to eliminate contaminants that come in contact with the unit

Customize your fan with any custom digital print design



Axial fans draw air into the chamber and sterilize the air before returning it into the environment

UV panel replacement kit for easy maintenance available

*Varies by fixture configuration

LED RETROFIT LINEAR HIGH BAY

ISON™ LINEAR LED MODULE RETROFIT, GEN 2

LMAR2 SPECIFICATIONS

Fixture Sizes

- 4' or 8' Retrofit Lengths; 2 Widths Available per Length

Lumen Range / LPW

- 9,000 or 18,000 Lumens, up to 171 LPW

Factory Installed Features and Options

- 120v-277v, 347v, and 480v
- 80 CRI; 4000K
- Two Light Distribution Options: No Lens or Frosted Acrylic Lens

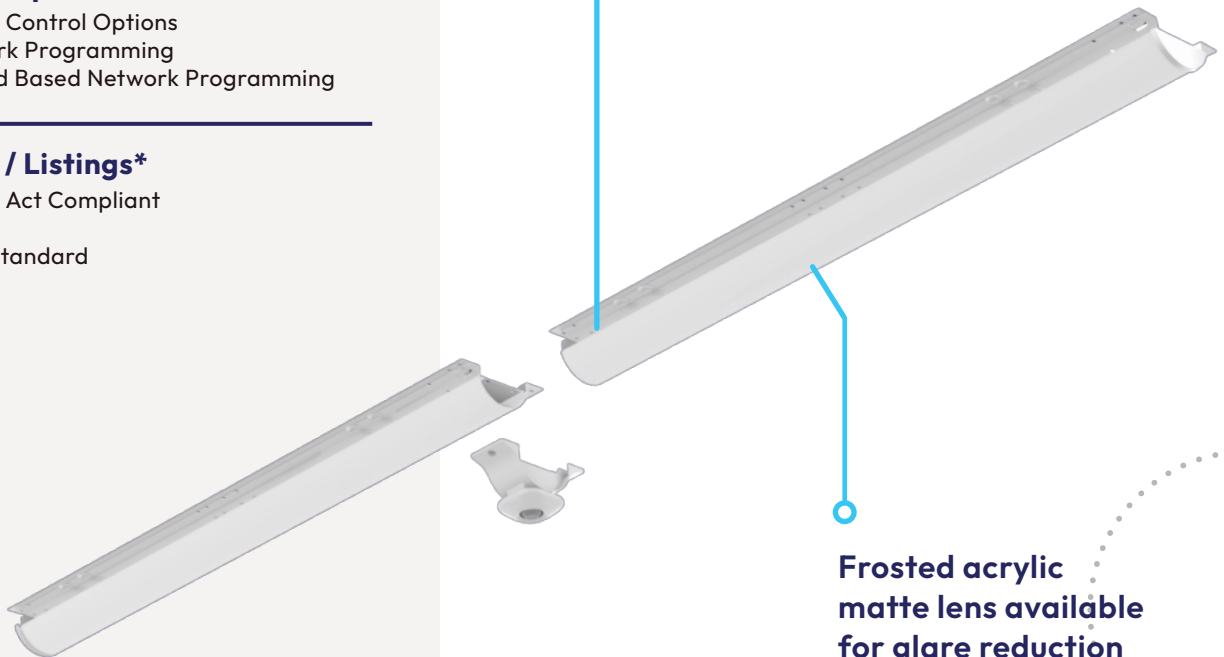
Field Installed Options

- Field Installed Control Options
- Onsite Network Programming
- Internet/Cloud Based Network Programming

Certifications / Listings*

- Buy American Act Compliant
- UL/cUL Listed
- DLC® Listed Standard

Retrofit light engine is designed to fit in existing linear fluorescent high or low bay fixture channels for ease of install



Frosted acrylic matte lens available for glare reduction

*Varies by fixture configuration

LED TROFFER

HARRIS LED TROFFER, GEN 2

LTHE2 SPECIFICATIONS

Fixture Sizes

- 1' x 4', 2' x 2', or 2' x 4'

Lumen Range / LPW

- 2,000 to 8,000 Lumens, up to 158 LPW

Factory Installed Features and Options

- 120v-277v and 347v
- 80 CRI; 3500K, 4000K, and 5000K
- Different Dimming Capacity Drivers
- Dial Dimmer
- Britex™ Coating
- Battery Backup Available

Field Installed Options

- Seismic Cable

Control Types Available

- Factory Installed Controls and Sensors Available
- Manual Programming Sensors
- Remote Programming Sensors
- On Site Network Programming
- Internet/Cloud Based Network Programming

Certifications / Listings*

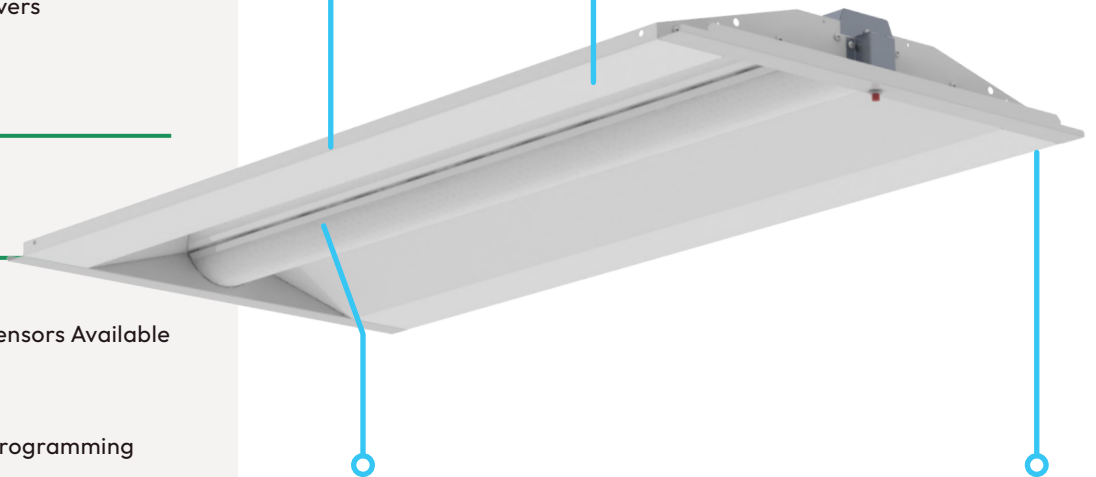
- Buy American Act Compliant
- UL/cUL Listed
- DLC® Listed Standard
- BABA Compliant
- CA Title 20 Compliant Battery Backup Available

Mounting Options

- Recessed Mounting for T-Bar Grid Systems

Dial dimmer available for field adjustment of power and lumen output option

Title 24 compliant seismic cable kit available that easily attaches to the fixture housing



Wide light distribution reduces wall and ceiling dark spaces

Britex™ coating available with antimicrobial properties to eliminate contaminants that come in contact with the unit

*Varies by fixture configuration

LED TROFFER

HARRIS LED SURFACE MOUNT TROFFER, GEN 3

LSME3 SPECIFICATIONS

Fixture Sizes

- 1' x 4', 2' x 2', or 2' x 4'

Lumen Range / LPW

- 2,000 to 8,000 Lumens, up to 165 LPW

Factory Installed Features and Options

- 120v-277v and 347v
- 80 CRI; 3500K, 4000K, and 5000K
- Different Dimming Capacity Drivers
- Dial Dimmer
- Battery Backup Available

Field Installed Options

- Factory Installed Controls and Sensors Available
- Manual Programming Sensors
- Remote Programming Sensors
- On Site Network Programming
- Internet/Cloud Based Network Programming
- CA Title 20 Compliant Battery Backup Available

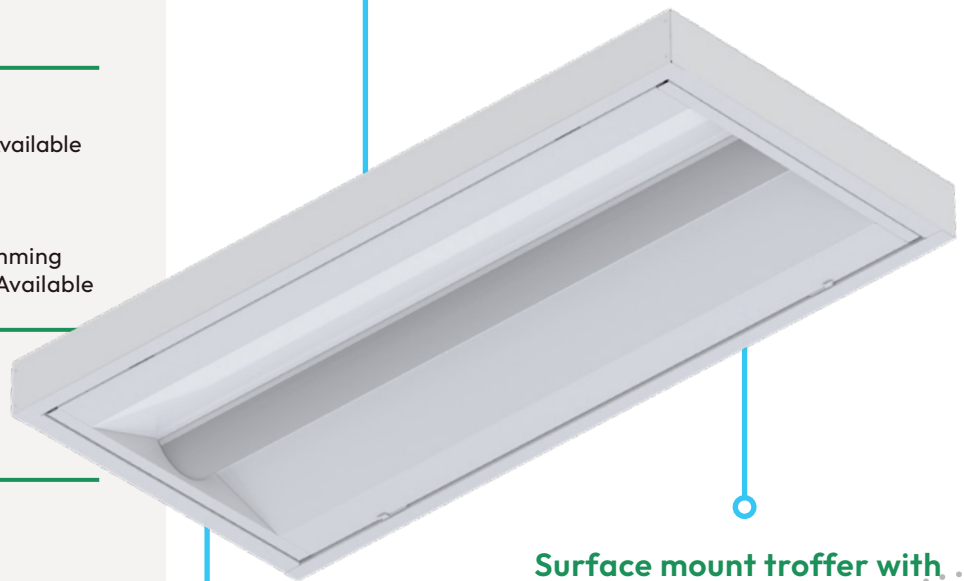
Certifications / Listings*

- Buy American Act Compliant
- UL/cUL Listed

Mounting Options

- Surface Mounting

Dial dimmer
available for field
adjustment of
power and lumen
output option



Surface mount troffer with
same aesthetic of the Orion
LDRE3 for continuous look
throughout application

Aluminum fixture body and
aluminum pan for optimal
thermal dissipation to extend
the life of electrical components

*Varies by fixture configuration

LED TROFFER RETROFIT

HARRIS LED LDR® TROFFER RETROFIT, GEN 3

LDRE3 SPECIFICATIONS

Fixture Sizes

- 1' x 4', 2' x 2', or 2' x 4'

Lumen Range / LPW

- 2,000 to 8,000 Lumens, up to 165 LPW

Factory Installed Features and Options

- 120v-277v and 347v
- 80 CRI; 3500K, 4000K, and 5000K
- Different Dimming Capacity Drivers
- Dial Dimmer
- Britex™ Coating
- Battery Backup Available

Field Installed Options

- Seismic Cable

Control Types Available

- Factory Installed Controls and Sensors Available
- Manual Programming Sensors
- Remote Programming Sensors
- On Site Network Programming
- Internet/Cloud Based Network Programming

Certifications / Listings*

- Buy American Act Compliant
- UL/cUL Listed
- DLC® Listed Standard
- BABA Compliant
- CA Title 20 Compliant Battery Backup Available

Mounting Options

- Standard, Air Handling and Lift Bracket Kits for Recessed T-Bar Grids

Installs in minutes with quick bracket system

Dial dimmer available for field adjustment of power and lumen output option



Ultra-lightweight aluminum body for ease of single person install

Title 24 compliant seismic cable kit available that easily attaches to the fixture housing

*Varies by fixture configuration

Lighting Controls

Integrate fixtures with intelligent lighting controls to increase effectiveness and energy savings.

BENEFITS OF LED EXTERIOR LIGHTING CONTROLS



Increased Energy Savings

Controls allow for programmable time settings or motion sensors that enable users to light a space only when it's occupied, decreasing energy costs.



Better Security and Improved Safety

Lights triggered by security system-connected controls help deter crime and alert property managers to activity where occupancy isn't expected or allowed.



Lighting Pollution Mitigation

LED fixtures combined with controls allow for less light pollution. Orion offers a variety of Dark Sky compliant products that eliminate the threat to local nighttime environments.

LED EXTERIOR LIGHTING CONTROL TECHNOLOGY TYPES



PHOTOCELL SENSOR

Photocell sensors automatically adjust to surrounding ambient light levels triggering exterior lights to turn on and off - regularly activating at sunset and dawn.



MICROWAVE SENSOR

Consistently sending out high-frequency radio waves at 360 degrees, microwave sensors identify changes in return waves to detect movement and are particularly effective for large coverage areas. Users can program microwave sensors in the field to their preferred time a light should stay on when triggered.



PASSIVE INFRARED (PIR) SENSOR

A PIR sensors measure infrared light radiating from objects in its field of view. It is commonly used to identify the presence of people for increased security.

Lighting Control Solutions

Basic sensors and controls can be integrated throughout a facility with mid-range and advanced control solutions for mixed use environments.

LIGHTING CONTROL FEATURES						
		TIER I (MANUAL SETTINGS)	TIER II (REMOTE SETTINGS)	TIER III (WIRELESS CONTROLS WITH ZONES)	TIER IV (ON-SITE NETWORK CONTROLS)	TIER V (CLOUD BASED IoT CONTROLS)
BASIC	INTERCHANGEABLE LENSES	✓	✓			
	MANUAL PROGRAMMING CAPABLE	✓				
	ON/OFF SETTINGS	✓				
MID-RANGE	DIMMABLE (0-10V)	✓	✓	✓	✓	✓
	DAYLIGHT HARVESTING	✓	✓	✓	✓	✓
	HANDHELD REMOTE MANAGEMENT		✓			
ADVANCED	PHONE APP BASED COMMISSIONING		✓	✓		
	WIRELESS ZONES/ GROUPS			✓	✓	✓
	SCHEDULING			✓	✓	✓
	WIRELESS WALL SWITCH			✓	✓	✓
	COMPUTER ACCESS DASHBOARD DATA				✓	✓
	ENERGY MANAGEMENT DATA				✓	✓
	TEMPERATURE SENSING				✓	✓

Orion offers a wide variety of control solutions for existing and new lighting control systems including but not limited to:

 Enlighted

 PHILIPS

 legrand®
WATTSTOPPER®

 Keilton®
LifeTCC®

 LEVITON®

 LUTRON®

 orion

Energy-As-A-Service

Orion's Energy-As-A-Service finance solution provides customers with access to a **suite of premier lenders** at **preferred rates** to finance their facility's lighting upgrades **without the need to draw from cash reserves**.

Don't wait for capital project approval to capture energy savings and optimize your business.



Accelerate ROI

Capture immediate energy reduction savings without capital investment.



No Cash Down

Keep your cash flow flexibility to invest in revenue-generation business operations.



Premier Lenders

Select from a suite of Orion-approved lenders to accelerate underwriting and lock in industry-leading rates.



Complete Financing

Incorporate every aspect of the project such as facility audits, shipping, and installation with no minimums or maximums.



Customized Terms

Finance all or a portion of the project. Select from a variety of term lengths that best suits your needs.

PRODUCT WARRANTY OPTIONS

We back our products with excellent warranty coverage to provide you peace-of-mind in case of unexpected product breakdowns.

✓ STANDARD 5-YEAR LIMITED WARRANTY

Standard warranty coverage includes mechanical and electrical component failure during the term.

- + Five-year product warranty coverage comes standard on all LED fixtures.

✓ EXTENDED 10-YEAR WARRANTY

Orion's 10-year Extended Warranty provides additional coverage for the replacement or repair of LED products including critical electronic components such as sensors, drivers, hardwired cords, and LED boards.

- + Is in addition to, and does not replace, standard warranty coverage.
- + Available at additional cost.
- + All Orion fixtures are eligible for the additional 10-year coverage.
- + Extended warranty is backed by a highly rated insurance company.

Orion Maintenance Services

Let our certified lighting technicians service and maintain lighting systems and components so you can focus on your business.

- Nationwide team of skilled and certified lighting and electrical professionals located throughout the US
- Currently providing preventative and reactive lighting and electrical services at over 8000 customer locations throughout the US and Caribbean

CUSTOMER SATISFACTION IS ALWAYS OUR TOP PRIORITY:

✓ Contract pricing to keep costs down.

✓ A comprehensive team of licensed electricians / technicians at your disposal.

✓ Fully equipped trucks to eliminate return trips.

✓ Regular reporting and status updates on each call service call.

OUR ALWAYS-AVAILABLE EXPERT TECHNICIANS:



Are nationwide to quickly respond to any location.



Respond to warranty claims and time-critical service calls.

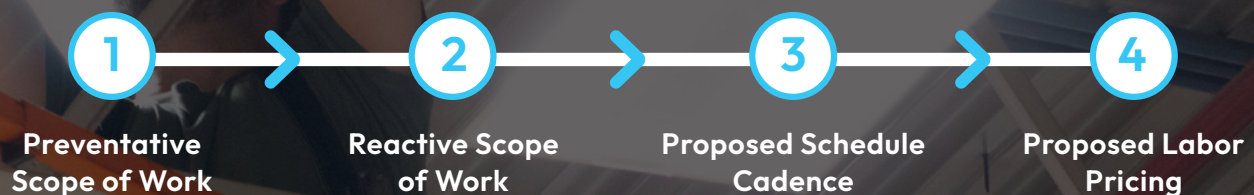


Communicate directly with end-user customers to save you time and money.



Are always on-call to be on site within 48 hours - or sooner.

Maintenance Process



BAA-Compliant EV Charging Solutions

Voltrek, an Orion Energy Systems company and trusted leader in the EV charging market since 2010, specializes in designing, installing, and servicing commercial EV infrastructure. Trust in Voltrek to outfit your location with BAA-compliant EV charging solutions.

BAA-Compliant Solutions from trusted partners:



PLANNING & DESIGN

- Site assessment, design, and engineering
- Grant identification and assistance
- Equipment and network selection
- Planning and permitting
- Usage policies and accessibility recommendations
- Budgeting and cost analysis



INSTALLATION

- Turnkey services
- Project management
- Utility coordination and permit expedition
- Station programming and network activation
- Customer training
- Cost-plus and fixed-price contracting
- Assembly-only equipment services





BAA-Compliant LED Lighting Catalog

orion™

orion™

orionlighting.com | 1.800.660.9340

© 2025 Orion Energy Systems, Inc. All rights reserved. The Orion logo is a trademark/service mark of Orion Energy Systems, Inc. All other trademarks are property of their respective owners.

orion™

rev 20250609