

The Orion logo is centered in the upper half of the page. It features the word "orion" in a lowercase, sans-serif font. The "o" and "i" are white, while the "r", "o", and "n" are a light blue color. A small "TM" trademark symbol is positioned to the right of the "n". The logo is overlaid on a dark blue circular graphic that has a solid blue outer ring and a dotted white inner ring.

orion™

BAA and BABA- Compliant LED Lighting Catalog

Table of Contents

Our Goal	3
LED Lighting Product Categories	4
DesignLights Consortium® (DLC®)	5
Orion and BAA Compliance.	6
Orion and BABA Compliance.	7
Certifications Overview	8 – 9
Interior LED Lighting Solutions	10 – 24
Lighting Controls	25
EV Charging Services	26
Fluorescent Lighting Bans	27

Our Goal

To help our customers achieve resilient energy savings, reduce greenhouse gas emissions, and eliminate deferred maintenance through our innovative LED technology and exceptional service.

Core Strengths

We set ourselves apart with:



Industry-Leading Products



Broad and Diversified Product Portfolio



BAA/BABA Compliant Product Options



U.S. Based Customer Support and Engineering Resources



Quick Quote Turnaround Time



Customer-first Approach



Socially & Environmentally Responsible Operations

Reduced Carbon Footprints and Returns on Investment

Orion believes in a sustainable future and works to reduce our own carbon footprint while helping customers reduce theirs. Not only does this help the environment, it also achieves cost savings in short order, with efficient LED lights paying for themselves in just a few years.

Contact Us

Ready to start saving on energy costs with an LED retrofit? Or maybe you're looking for the best LED lighting for a new construction project?

[Let's connect](#) and discuss how we can help your facility shine.

LED Lighting Product Categories

Unlock your ideal solution with our range of product options. Tailor your choice to your needs and enjoy exceptional quality and performance at every level.

ISON®

The highest standard of performance and quality to provide best-in-class return on investment and lowest pay-back period while exceeding **Unified Facilities Criteria** and **Whole Building Design Guide** standards.

LPW

Highest In Industry

CONTROLS

Capable of Advanced Controls

L70

100,000+ Hours

FEATURES

Best-in-Class

PRICE

Premium

CERTIFICATIONS

Best-in-Class

OPERATING TEMPS

Best-in-Class per Product Application

HARRIS

Above-average performance with a complete array of features and options that exceed **Unified Facilities Criteria** and **Whole Building Design Guide** standards.

LPW

Exceeds Industry Standards

CONTROLS

Capable of Advanced Controls

L70

100,000 Hours

FEATURES

Best-in-Class

PRICE

Competitive

CERTIFICATIONS

Best-in-Class

OPERATING TEMPS

45°-55°C Depending on Application

DesignLights Consortium® (DLC®)

The DLC® Qualified Product Listing has high-quality, energy-efficient lighting products that qualify for rebates in utility and energy efficiency programs.



DLC® LISTED STANDARD

Lighting products that meet the basic energy efficiency and performance requirements set by the DLC®. They are designed to provide significant energy savings compared to traditional lighting solutions. DLC® Listed Standard products meet certain criteria for efficacy, color quality, and other performance factors.



DLC® LISTED PREMIUM

Lighting products go beyond the basic requirements established by the DLC®. They are designed to achieve even higher energy savings and offer superior light quality and controllability. DLC® Listed Premium products demonstrate a significant improvement in terms of energy efficiency, color accuracy, and other performance metrics compared to DLC® Listed Standard products. They represent the top tier of energy-efficient lighting solutions.

Utility Incentives

Energy-efficient lights qualify for money-saving incentives offered by utility companies and governments. These incentives aim to encourage the use of efficient lighting solutions.

To qualify, choose any Orion DLC®-listed lighting products to help offset the cost of upgrading to energy-efficient lighting. It's a straightforward way to save money while contributing to a more sustainable future.

Need Help Navigating the Rebate Process?
Contact our customer service team at **920-482-0520**.

BAA Compliant Product Categories



Orion's Buy American-compliant LED solutions make it easy for federal agencies and contractors to purchase high-quality, U.S.-manufactured lighting that meets federal requirements. Our broad BAA portfolio also supports qualifying state and local projects seeking federal funding. Orion proudly welcomes customers to experience our BAA-certified fixtures firsthand—expertly crafted by skilled Wisconsin workers dedicated to American manufacturing excellence.

HIGH BAY



ENCLOSED HIGH BAY



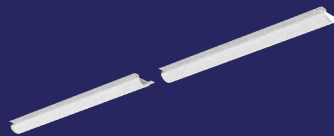
LINEAR/LINEAR RETROFIT



TROFFER/TROFFER RETROFIT



RETROFIT LINEAR HIGH BAY



Build America, Buy America (BABA) Act-Compliant LED Lighting



Orion has BABA certified LED lighting for your next retrofit or new construction project.

Orion has proudly manufactured LED Lighting products in the United States since 1996 and offers a variety of high-performing LED lights that are guaranteed to meet the 55% or greater manufactured in America BABA required threshold.

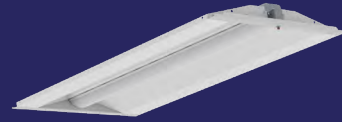
Lower Energy Costs and Increase Sustainability with BABA-Compliant LED Lighting



**HARRIS LED HIGH BAY
STAR LINE, GEN 2**



**HARRIS LED LDR® TROFFER
RETROFIT, GEN 3**



HARRIS LED TROFFER, GEN 2



**HARRIS LED STRIP LUMINAIRE,
GEN 2**



**HARRIS LED STRIP RETROFIT,
GEN 2**



**HARRIS LED MULTIPURPOSE
LINEAR, GEN 2**



**ISON® LED VAPORTIGHT
WIDE BODY, GEN 2**



**ISON® LED VAPORTIGHT
NARROW BODY, GEN 2**



**HARRIS LED SURFACE MOUNT
TROFFER, GEN 3**



Contact us for more
information or to
request a quote.

Certifications Overview



NSF

NSF (National Sanitation Foundation) evaluated and tested fixtures per NSF/ANSI 2 (Food Equipment regulations) for use in non-food zone and splash zone locations. Non-food zones are areas where contact of food with the fixture is unexpected. Splash zones are areas where spills and splashes from liquids used in the processing or cleaning procedure may get on the surface of the fixtures.



TAA

The United States Trade Agreements Act (TAA) states that in order to be considered TAA-compliant, a fixture must have a minimum of 50% of its total manufacturing cost coming from either the United States or a country designated under the TAA. The product has undergone substantial transformation in the US or a TAA-designated country.



BABA

BABA establishes a domestic preference for Federal financial assistance obligated for infrastructure projects. The BABA preference applies to three separate product categories including manufacturing that include LED lighting products.



BAA

The Buy American Act (BAA) is a federal law that pertains to goods used in the United States. It establishes a minimum requirement for the percentage of materials or parts sourced from the US in manufactured items. This product is manufactured in Wisconsin and is a COTS product.



DLC® PREMIUM

The fixture is DLC® Premium compliant. It has been evaluated and certified based on light quality, performance, lifespan, and enhanced energy efficiency. Within this classification, “Premium” signifies a higher level of performance compared to the “Standard” classification. In both the United States and Canada, the majority of utility companies mandate that fixtures must hold a DLC® rating to be eligible for rebates.



DLC® STANDARD

The fixture is DLC® Standard compliant. It has been evaluated and certified based on light quality, performance, lifespan, and enhanced energy efficiency. In both the United States and Canada, the majority of utility companies mandate that fixtures must hold a DLC® rating to be eligible for rebates.



UL CERTIFIED

The fixture has been tested and met defined requirements by UL (Underwriter Laboratories) standards for fire safety and electrical safety. For use both in U.S. and Canada.

Certifications Overview



UL DAMP RATED

The fixture is tested and approved by UL for areas that are regularly exposed to moisture and condensation. It does not cover direct water contact. Typically used in manufacturing areas exposed to humidity, moisture and condensation. They can also be used outdoors in areas that are protected from direct rain or snow exposure.



UL WET RATED

The fixture is tested and approved by UL to be installed anywhere that liquids will come in direct contact. Typically used for outdoor lighting.

IP65

IP65

This fixture is IP-rated (Ingress Protection code) for protection against dust and from water jets from any direction. IP code are defined by IEC 60529 International Standard.

IP66

IP66

This fixture is IP-rated for protection against dust and water resistant against powerful jets. IP codes are defined by IEC 60529 International Standard.

IP67

IP67

This fixture is IP-rated for protection against dust and protected from immersion (up to 1m) for a limited time. IP code are defined by IEC 60529 International Standard.




IK08

This fixture has an IK08 rating, signifying its ability to withstand impact up to 5 joules or the equivalent of a 1.7kg (3.7 lb) mass dropped from a height of 300mm (11.8 in) onto the surface. These IK ratings adhere to the specifications outlined in the IEC 62262 International Standard.



IK10

This fixture holds an IK10 rating, indicating its capacity to provide Enclosure Protection against impact of up to 20 joules, equivalent to the impact of a 5kg (11 lb) mass dropped from a height of 400mm (15.7 in) onto the surface. These IK ratings are established according to the IEC 62262 International Standard.

The background is a dark, semi-transparent image of a large indoor space, possibly a school cafeteria or gymnasium. It features a high ceiling with exposed metal trusses and pipes. On the left, there are rows of lockers. In the foreground, there are several tables and blue chairs, suggesting a dining or meeting area. A large, stylized graphic is overlaid on the image, consisting of a solid blue-to-green gradient arc that forms the top and right sides of a circle, and a dotted white line that forms the bottom and left sides. The text "Interior LED Lighting Solutions" is centered within this circular graphic in a white, sans-serif font.

Interior LED Lighting Solutions



PG 12

HIGH BAY / LOW BAY

Ideal fixtures for warehouse, manufacturing, and inventory management facilities with varying ceiling heights up to 40'.



PG 16

LINEAR

Commonly used in commercial and retail settings. These fixtures are easy to install and can be grouped or continuously run to create lighting uniformity.



PG 18

LINEAR RETROFIT

Reduce your energy expenses by effortlessly upgrading from outdated fluorescent technology to LED using our user-friendly LED linear retrofit kits. These kits not only ensure a long fixture life but also help you save on labor costs during the retrofitting process to LED.



PG 19

ENCLOSED HIGH BAYS / VAPORTIGHTS

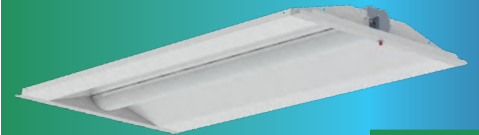
Demanding conditions and harsh environments, making them ideal for use in manufacturing, food preparation, and food processing facilities. Their durability ensures reliable performance even in challenging settings.



PG 21

RETROFIT LINEAR HIGH BAY

Retrofits existing T12/T8 linear high bay fluorescent fixtures to LED, in high ceiling retail settings and inventory management facilities with varying ceiling heights up to 40'.



PG 22

TROFFER

Available in various size fixtures, troffer fixtures are utilized for drop-in ceilings and surface-mount applications where even light distribution is needed. Typically used in commercial and office settings.



PG 24

TROFFER RETROFIT

Designed for retrofitting existing T12/T8 fluorescent troffers with an easy retrofit bracket system, our troffer retrofit allows for quick installation in under two minutes.

LED HIGH BAY

HARRIS LED HIGH BAY STAR LINE, GEN 2

* BABA COMPLIANT *

HHSL2 SPECIFICATIONS

Fixture Sizes

- 2' or 4'

Lumen Range / LPW

- 9,000 to 72,000 Lumens, up to 185 LPW

Factory Installed Features and Options

- 120v-277v, 347v, and 480v
- 80 CRI; 3500K, 4000K, and 5000K
- Four Light Distribution Types: No Lens, Acrylic General Distribution, Acrylic Aisle Distribution, and Acrylic Medium Distribution
- Multiple Power Connection Options
- 6kV/3kA Surge Protection Standard
- 20kV/10kA Additional Surge Protection Optional
- Orange Painted End Cap for Emergency Fixture Identifier
- High Ambient Operating Temp. Available to 65°C
- Battery Backup Available

Field Installed Options

- Battery Backup Kit
- Wireguard Kit

Control Types Available

- Field or Factory Installed Control and Sensor Options
- Manual Programming Sensors
- Remote Programming Sensors
- Remote Programming with Zoning

Certifications / Listings*

- Buy American Act Compliant
- UL/cUL Listed
- UL Damp Rated
- DLC® Listed Standard and Premium
- BABA Compliant
- CA Title 20 Compliant Battery Backup Available

Mounting Options

- Suspended Mounting
- Surface Mounting
- Rigid Mounting



*Varies by fixture configuration

LED HIGH BAY

HARRIS LED HIGH BAY STAR LINE HIGH EFFICACY, GEN 2

HHSL2 HE SPECIFICATIONS

Fixture Sizes

- 2' or 4'

Lumen Range / LPW

- 9,000 to 72,000 Lumens, up to 185 LPW

Factory Installed Features and Options

- 120v-277v, 347v, and 480v
- 80 CRI; 3500K, 4000K, and 5000K
- Four Light Distribution Types: No Lens, Acrylic General Distribution, Acrylic Aisle Distribution, and Acrylic Medium Distribution
- Multiple Power Connection Options
- 6kV/3kA Surge Protection Standard
- 20kV/10kA Additional Surge Protection Optional
- Orange Painted End Cap for Emergency Fixture Identifier
- High Ambient Operating Temp. Available to 65°C
- Battery Backup Available

Field Installed Options

- Battery Backup Kit
- Wireguard Kit

Control Types Available

- Field or Factory Installed Control and Sensor Options
- Manual Programming Sensors
- Remote Programming Sensors
- Remote Programming with Zoning

Certifications / Listings*

- Buy American Act Compliant
- UL/cUL Listed
- UL Damp Rated
- DLC® Listed Standard and Premium
- BABA Compliant
- CA Title 20 Compliant Battery Backup Available

Mounting Options

- Suspended Mounting
- Surface Mounting
- Rigid Mounting

Wireguard kits available for protection when exposed to potential impact

Narrow, light-weight aluminum design for optimal with ease of handling in the field that reduces installation time and labor costs

Four light distribution types to meet your application needs

High efficacy chips for optimal performance



*Varies by fixture configuration

LED HIGH BAY

ISON® LED HIGH BAY FIXTURE, GEN 2

LMAF2 SPECIFICATIONS

Fixture Sizes

- 4' or 8'

Lumen Range / LPW

- 9,000 or 18,000 Lumens, up to 171 LPW

Factory Installed Features and Options

- 120v-277v, 347v, and 480v
- 80 CRI; 4000K CCT
- No Lens or Acrylic Frosted Lens Available

Certifications / Listings*

- Buy American Act Compliant
- UL/cUL Listed
- UL Damp Rated
- DLC® Listed Standard

Mounting Options

- Suspended Mounting



Light-weight, aluminum body for ideal thermal dissipation and reduced ceiling grid load

No lens or frosted acrylic lens to provide glare reduction in the environment

*Varies by fixture configuration

LED HIGH BAY

HARRIS LED PATRIOT SLIMLINE™ HIGH BAY, GEN 2

HBHS2 SPECIFICATIONS

Fixture Sizes

- 4' Standard

Lumen Range / LPW

- 12,000 to 30,000 Lumens, up to 181 LPW

Factory Installed Features and Options

- 120v-277v, 347v, and 480v
- 80 CRI; 4000K and 5000K
- Two Light Distribution Types: No Lens or Frosted Acrylic Lens
- Multiple Power Connection Options
- 6kV/3kA Surge Protection Standard
- 20kV/10kA Additional Surge Protection Optional
- Orange Painted End Cap for Emergency Fixture Identifier
- Battery Backup Available

Field Installed Options

- Wireguard Kits
- Lens Install Kits
- External Transformers for High Voltage 347v/480v Installation

Control Types Available

- Factory or Field Installed Controls and Sensors
- Manual Programming Sensors
- Remote Programming Sensors
- On Site Network Programming Sensors
- Internet/Cloud Based Network Programming

Certifications / Listings*

- Buy American Act Compliant
- UL/cUL Listed
- UL Damp Rated
- DLC® Listed Standard
- DLC® Listed Premium
- CA Title 20 Compliant Battery Backup Available

Mounting Options

- Suspended Mounting
- Surface Mounting
- Rigid Mounting

Wireguard kits available for protection when exposed to potential impact

Multiple configurable power connection options; different whip lengths for less installation time

Narrow I-Frame design for easy install in tight spaces

Field installable lens kit available to add glare reduction in the field if needed



*Varies by fixture configuration

LED LINEAR

HARRIS LED MULTIPURPOSE LINEAR, GEN 2

*** BABA COMPLIANT ***

MPHL2 SPECIFICATIONS

Fixture Sizes

- 4' or 8'

Lumen Range / LPW

- 2,000 to 12,000 Lumens, up to 168 LPW

Factory Installed Features and Options

- 120v-277v and 347v
- 80 CRI; 3500K, 4000K, and 5000K
- Two Light Distribution Types: No Lens and Acrylic Frosted Lens
- Multiple Power Connection Options
- 10kA/5kV Additional Surge Protection
- Continuous Run System
- Plastic End Caps
- Battery Backup Available

Field Installed Options

- Wireguard Kit
- Tandem Kit
- Battery Backup Kit

Control Types Available

- Factory or Field Installed Control and Sensor Options
- Manual Programming Sensor
- Remote Programming Sensor
- Remote Programming Sensor with Zoning

Certifications / Listings*

- Buy American Act Compliant
- UL/cUL Listed
- UL Listed Damp
- DLC® Listed Standard
- BABA Compliant
- CA Title 20 Compliant Battery Backup Available

Mounting Options

- Surface Mounting
- Suspended Mounting
- Continuous Run



Plastic end caps available

Innovative design allows for continuous run between fixtures

Fixture wireguard kit for field install for rugged environments that easily attaches to the fixture housing

Wire harness option provides left, right and center electrical connection for quick connect system

*Varies by fixture configuration

LED LINEAR

HARRIS LED STRIP LUMINAIRE, GEN 2

*** BABA COMPLIANT ***

SFHC2 SPECIFICATIONS

Fixture Sizes

- 4' or 8'

Lumen Range / LPW

- 2,000 to 10,000 Lumens, up to 182 LPW

Factory Installed Features and Options

- 120v-277v
- 80 CRI; 3500K, 4000K, and 5000K
- Three Light Distribution Options: No Lens, Frosted Acrylic 2' Lens, Frosted Acrylic 3' Lens
- Multiple Power Connection Options
- Battery Backup Available

Field Installed Options

- Wireguard Kit

Control Types Available

- Factory and Field Installed Sensor and Controls Available
- Manual Programming Sensors
- Remote Programming Sensors
- Remote Programming with Zoning Sensors

Certifications / Listings*

- Buy American Act Compliant
- UL/cUL Listed
- DLC® Listed Standard
- BABA Compliant
- CA Title 20 Compliant Battery Backup Available

Mounting Options

- Surface Mounting
- Suspended Mounting

Multiple fixture knockouts for quick connection to power

Can be tandem mounted to create electrical raceway between fixtures



Fixture comes with installation tethers to hold cover in place for one person installation

Fixture wireguard kit for field install for rugged environments that easily attaches to the fixture housing

*Varies by fixture configuration

LED LINEAR RETROFIT

HARRIS LED STRIP RETROFIT, GEN 2

*** BABA COMPLIANT ***

SFHR2 SPECIFICATIONS

Fixture Sizes

- 4' or 8' Length, 4.25" Width or 5.00" Width Retrofit Kits

Lumen Range / LPW

- 2,000 to 10,000 Lumens, up to 182 LPW

Factory Installed Features and Options

- 120v-277v
- 80 CRI; 3500K, 4000K, and 5000K
- Three Light Distribution Options: No Lens, Frosted Acrylic 2' Lens, Frosted Acrylic 3' Lens
- Battery Backup Available

Field Installed Options

- Wireguard Kits

Control Types Available

- Factory and Field Installed Sensor and Controls Available
- Manual Programming Sensors
- Remote Programming Sensors
- Remote Programming with Zoning Sensors

Certifications / Listings*

- Buy American Act Compliant
- UL/cUL Listed
- DLC® Listed Standard
- BABA Compliant
- CA Title 20 Compliant Battery Backup Available

Fixture wireguard kit for field install for rugged environments available that easily attaches to the existing fixture housing

Can be tandem mounted to create electrical raceway



Fixture comes with installation tethers to hold cover in place for one person installation

**Varies by fixture configuration*

LED VAPORTIGHT

ISON® LED VAPORTIGHT NARROW BODY, GEN 2

*** BABA COMPLIANT ***

VTON2 SPECIFICATIONS

Fixture Sizes

- 4' or 8'

Lumen Range / LPW

- 3,000 to 20,000 Lumens, up to 165 LPW

Factory Installed Features and Options

- 120v-277v, 347v, and 480v
- 80 CRI; 4000K and 5000K
- Acrylic, Impact Resistant, Ribbed Frosted Lens
- Multiple Power Connection Options
- 6kV/3kA Surge Protection Standard
- 20kV/10kA Additional Surge Protection Optional
- Cold Temperature Option (-40C)
- Battery Backup Available

Control Types Available

- Factory Installed Control and Sensor Options
- Manual Programming Sensors
- Remote Programming Sensors

Certifications / Listings*

- Buy American Act Compliant
- NSF/ANSI Standard 2
- UL/cUL Listed
- UL Wet Listed
- IP67
- IP66 When Using WSxx and WBxx Sensors
- IP65 When Using WWxx Sensor
- NEMA 4X Housing
- UL 5VA (f1) Fiberglass Housing
- High Pressure Washdown Up To 1500 PSI
- DLC® Listed Standard
- BABA Compliant
- CA Title 20 Compliant Battery Backup Available

Mounting Options

- Surface Mounting (Standard – Factory Shipped)
- Suspended Mounting

Durable and lightweight white fiberglass body

Configurable power connections for fast installation



Cold temperature option for cold storage environments

Marine Grade Stainless Steel latches and mounting brackets to withstand corrosion

Durable, impact-resistant acrylic frosted lens to withstand tough environments

*Varies by fixture configuration

LED VAPORTIGHT

ISON® LED VAPORTIGHT WIDE BODY, GEN 2

★ BABA COMPLIANT ★

VTOD2 SPECIFICATIONS

Fixture Sizes

- 2' or 4'

Lumen Range / LPW

- 13,000 to 38,000 Lumens, up to 167 LPW

Factory Installed Features and Options

- 120v-277v, 347v, and 480v
- 80 CRI; 4000K and 5000K
- Frosted Acrylic Lens Standard
- Multiple Power Connection Options
- 6kV/3kA Surge Protection Standard
- 20kV/10kA Additional Surge Protection Optional
- Cold Temperature Option (-40C)
- Battery Backup Available

Control Types Available

- Factory Installed Control and Sensor Options
- Manual Programming Sensors
- Remote Programming Sensors

Certifications / Listings*

- Buy American Act Compliant
- NSF/ANSI Standard 2
- UL/cUL Listed
- UL Wet Listed
- IP67 for 4' Fixtures
- IP69 for 2' Fixtures
- IP66 When Using WSxx and WBxx Sensors
- IP65 When Using WWxx Sensor
- NEMA 4X Housing
- UL 5VA (f1) Fiberglass Housing
- High Pressure Washdown Up To 1500 PSI
- DLC® Listed Standard
- BABA Compliant
- CA Title 20 Compliant Battery Backup Available

Mounting Options

- Surface Mount (Standard - Factory Shipped)
- Suspended Mounting
- Rigid Mounting

*Varies by fixture configuration



LED RETROFIT LINEAR HIGH BAY

ISON® LINEAR LED MODULE RETROFIT, GEN 2

LMAR2 SPECIFICATIONS

Fixture Sizes

- 4' or 8' Retrofit Lengths; 2 Widths Available per Length

Lumen Range / LPW

- 9,000 or 18,000 Lumens, up to 171 LPW

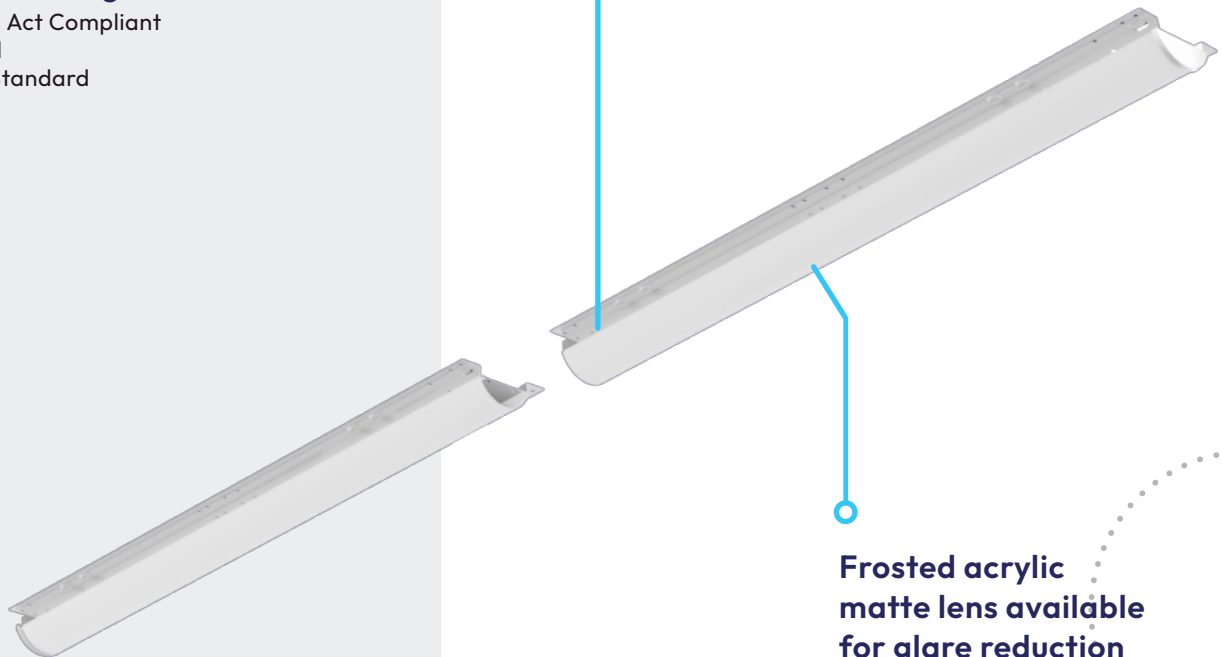
Factory Installed Features and Options

- 120v-277v, 347v, and 480v
- 80 CRI; 4000K
- Two Light Distribution Options: No Lens or Frosted Acrylic Lens

Certifications / Listings*

- Buy American Act Compliant
- UL/cUL Listed
- DLC® Listed Standard

Retrofit light engine is designed to fit in existing linear fluorescent high or low bay fixture channels for ease of install



Frosted acrylic matte lens available for glare reduction

*Varies by fixture configuration

LED TROFFER

HARRIS LED TROFFER, GEN 2

★ BABA COMPLIANT ★

LTHE2 SPECIFICATIONS

Fixture Sizes

- 1' x 4', 2' x 2', or 2' x 4'

Lumen Range / LPW

- 2,000 to 8,000 Lumens, up to 158 LPW

Factory Installed Features and Options

- 120v-277v and 347v
- 80 CRI; 3500K, 4000K, and 5000K
- Different Dimming Capacity Drivers
- Dial Dimmer
- Britex™ Coating
- Battery Backup Available

Field Installed Options

- Seismic Cable

Control Types Available

- Factory Installed Controls and Sensors Available
- Manual Programming Sensors
- Remote Programming Sensors
- Remote Programming with Zoning

Certifications / Listings*

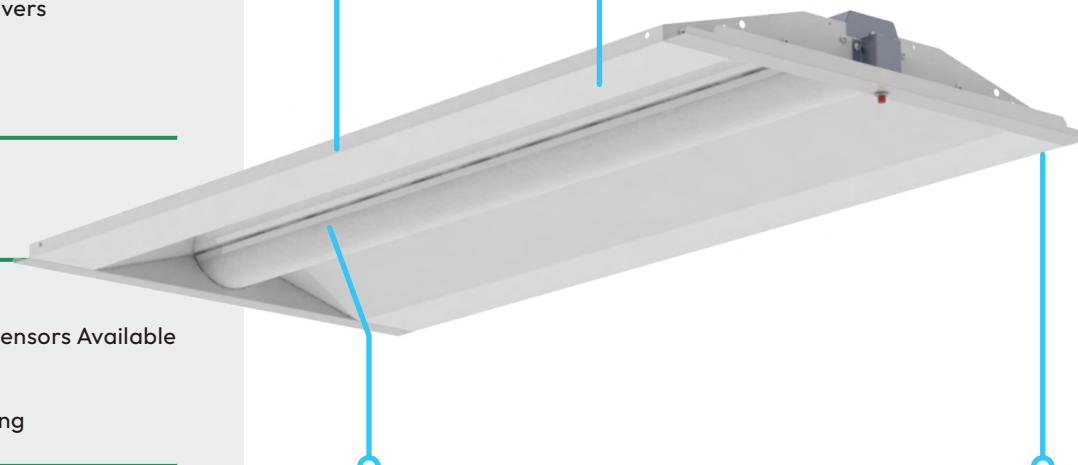
- Buy American Act Compliant
- UL/cUL Listed
- DLC® Listed Standard
- BABA Compliant
- CA Title 20 Compliant Battery Backup Available

Mounting Options

- Recessed Mounting for T-Bar Grid Systems

Dial dimmer available for field adjustment of power and lumen output option

Title 24 compliant seismic cable kit available that easily attaches to the fixture housing



Wide light distribution reduces wall and ceiling dark spaces

Britex™ coating available with antimicrobial properties to eliminate contaminants that come in contact with the unit

*Varies by fixture configuration

LED TROFFER

HARRIS LED SURFACE MOUNT TROFFER, GEN 3

*** BABA COMPLIANT ***

LSME3 SPECIFICATIONS

Fixture Sizes

- 1' x 4', 2' x 2', or 2' x 4'

Lumen Range / LPW

- 2,000 to 8,000 Lumens, up to 165 LPW

Factory Installed Features and Options

- 120v-277v and 347v
- 80 CRI; 3500K, 4000K, and 5000K
- Different Dimming Capacity Drivers
- Dial Dimmer
- Battery Backup Available

Field Installed Options

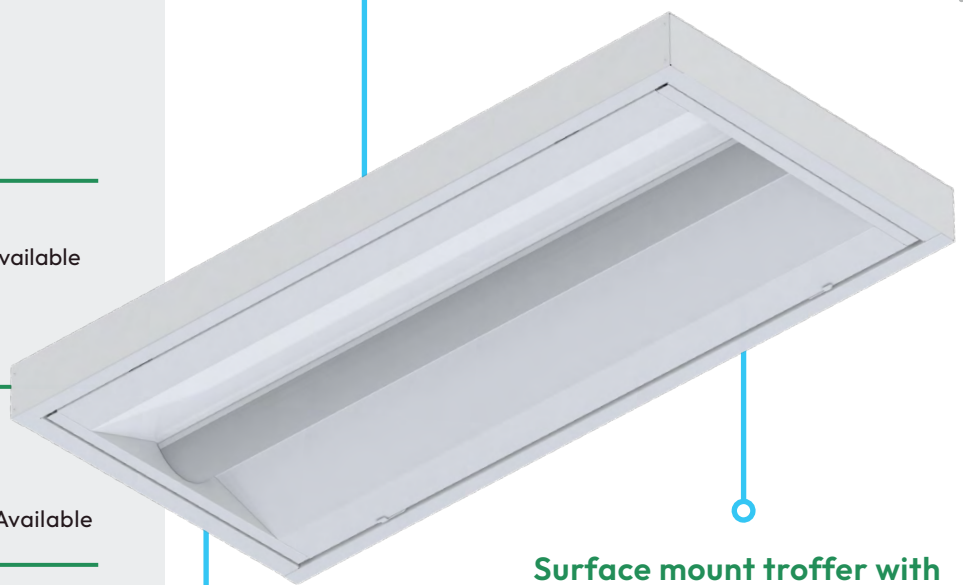
- Factory Installed Controls and Sensors Available
- Manual Programming Sensors
- Remote Programming Sensors
- Remote Programming with Zoning

Certifications / Listings*

- Buy American Act Compliant
- UL/cUL Listed
- CA Title 20 Compliant Battery Backup Available

Mounting Options

- Surface Mounting



Dial dimmer available for field adjustment of power and lumen output option

Surface mount troffer with same aesthetic of the Orion LDRE3 for continuous look throughout application

Aluminum fixture body and aluminum pan for optimal thermal dissipation to extend the life of electrical components

*Varies by fixture configuration

LED TROFFER RETROFIT

HARRIS LED LDR® TROFFER RETROFIT, GEN 3

*** BABA COMPLIANT ***

LDRE3 SPECIFICATIONS

Fixture Sizes

- 1' x 4', 2' x 2', or 2' x 4'

Lumen Range / LPW

- 2,000 to 8,000 Lumens, up to 165 LPW

Factory Installed Features and Options

- 120v-277v and 347v
- 80 CRI; 3500K, 4000K, and 5000K
- Different Dimming Capacity Drivers
- Dial Dimmer
- Britex™ Coating
- Battery Backup Available

Field Installed Options

- Seismic Cable

Control Types Available

- Factory Installed Controls and Sensors Available
- Manual Programming Sensors
- Remote Programming Sensors
- Remote Programming with Zoning

Certifications / Listings*

- Buy American Act Compliant
- UL/cUL Listed
- DLC® Listed Standard
- BABA Compliant
- CA Title 20 Compliant Battery Backup Available

Mounting Options

- Standard, Air Handling and Lift Bracket Kits for Recessed T-Bar Grids

Installs in minutes with quick bracket system

Dial dimmer available for field adjustment of power and lumen output option



Ultra-lightweight aluminum body for ease of single person install

Title 24 compliant seismic cable kit available that easily attaches to the fixture housing

**Varies by fixture configuration*

Lighting Control Solutions

Basic sensors and controls can be integrated throughout a facility with mid-range and advanced control solutions for mixed use environments.

LIGHTING CONTROL FEATURES						
		TIER I (MANUAL SETTINGS)	TIER II (REMOTE SETTINGS)	TIER III (WIRELESS CONTROLS WITH ZONES)	TIER IV (ON-SITE NETWORK CONTROLS)	TIER V (CLOUD BASED IoT CONTROLS)
BASIC	INTERCHANGEABLE LENSES	✓	✓			
	MANUAL PROGRAMMING CAPABLE	✓				
	ON/OFF SETTINGS	✓				
MID-RANGE	DIMMABLE (0-10V)	✓	✓	✓	✓	✓
	DAYLIGHT HARVESTING	✓	✓	✓	✓	✓
	HANDHELD REMOTE MANAGEMENT		✓			
ADVANCED	PHONE APP BASED COMMISSIONING		✓	✓		
	WIRELESS ZONES/ GROUPS			✓	✓	✓
	SCHEDULING			✓	✓	✓
	WIRELESS WALL SWITCH			✓	✓	✓
	COMPUTER ACCESS DASHBOARD DATA				✓	✓
	ENERGY MANAGEMENT DATA				✓	✓
	TEMPERATURE SENSING				✓	✓

Orion offers a wide variety of control solutions for existing and new lighting control systems including but not limited to:



BAA-Compliant EV Charging Solutions

Voltrek, an Orion Energy Systems company and trusted leader in the EV charging market since 2010, specializes in designing, installing, and servicing commercial EV infrastructure. Trust in Voltrek to outfit your location with BAA-compliant EV charging solutions.

BAA-Compliant Solutions from trusted partners:



PLANNING & DESIGN

- Site assessment, design, and engineering
- Grant identification and assistance
- Equipment and network selection
- Planning and permitting
- Usage policies and accessibility recommendations
- Budgeting and cost analysis



INSTALLATION

- Turnkey services
- Project management
- Utility coordination and permit expedition
- Station programming and network activation
- Customer training
- Cost-plus and fixed-price contracting
- Assembly-only equipment services



Fluorescent Lighting Bans

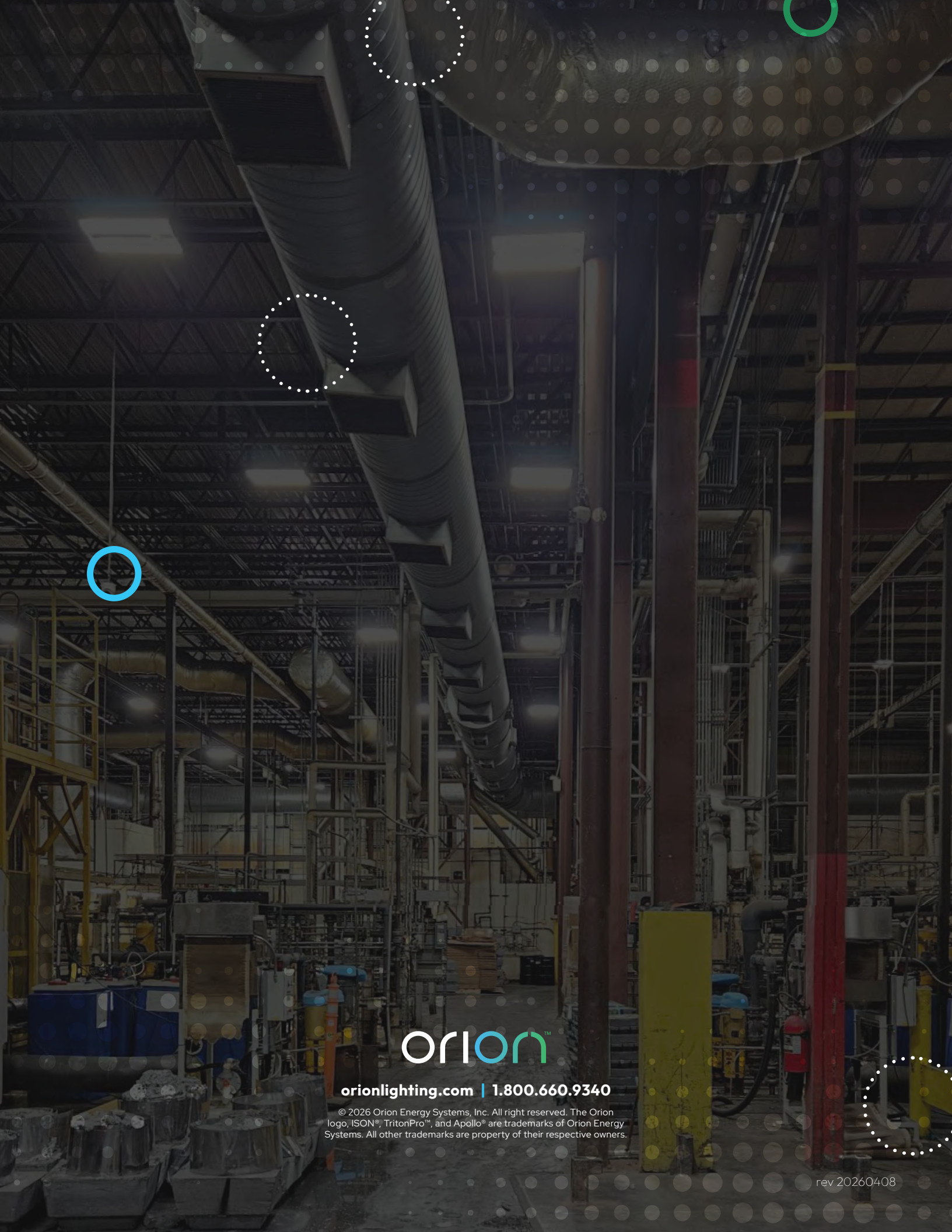
The global and U.S. initiatives to phase out fluorescent lighting are driven by a growing need to reduce energy costs, minimize mercury pollution, and lower greenhouse gas emissions.

This shift is not just about environmental responsibility— it's also about embracing LED lighting solutions that offer superior efficiency and quality.

LEDs represent the future of lighting for homes and businesses. These advanced alternatives to fluorescents provide not only better light quality but also significant savings in energy and maintenance costs. As we transition to a more sustainable future, LEDs stand out as the safer, more efficient choice for illuminating our spaces.

Key Reasons Fluorescent Lighting Is Becoming Non-Compliant

	Fluorescents	Orion LEDs
Energy Efficiency	Convert only 20-25% of energy into light, with the rest lost to heat and unwanted light dispersion.	Convert up to 95% of energy into light, with no heat produced and precise light distribution to target areas.
Lifespan	Last only 15,000+ hours	Last 100,000+ hours
Environmental Safety	Contain hazardous mercury	Do not contain any mercury
Light Quality	Provide poor coloring rendering, making colors appear washed out	Deliver superior color rendering and consistent light output, enhancing both safety and aesthetics.
Cost Savings	Consume more energy, resulting in higher energy bills and increased maintenance costs due to frequent replacements and downtime.	Reduce energy use by 30-40% , leading to lower energy bills and decreased maintenance costs with minimal downtime.



orion™

orionlighting.com | 1.800.660.9340

© 2026 Orion Energy Systems, Inc. All right reserved. The Orion logo, ISON®, TritonPro™, and Apollo® are trademarks of Orion Energy Systems. All other trademarks are property of their respective owners.