



LED Product Catalog

orion™

Table of Contents

Our Mission	3
LED Lighting Product Categories	4
DesignLights Consortium® (DLC®)	5
Certifications Overview	6–7
Interior LED Lighting Solutions	8–46
Exterior LED Lighting Solutions	47–55
Lighting Controls	56–57
Energy-As-A-Service	58
Maintenance Services	59

Our Mission

Through environmentally responsible practices and innovation, Orion provides energy-efficient LED lighting systems to help companies nationwide save on operating expenses while improving their lighting.

Core Strengths

We set ourselves apart with:



Superior lighting products



Project support from beginning to end and beyond



Quick quote turnaround time



Fast shipping of components made locally or regionally



Socially and environmentally responsible practices



Flexibility across projects

Reduced Carbon Footprints and Returns on Investment

Orion believes in a sustainable future and works to reduce our own carbon footprint while helping customers reduce theirs. Not only does this help the environment, it also achieves cost savings in short order, with efficient LED lights paying for themselves in just a few years.

Contact Us

Ready to start saving on energy costs with an LED retrofit? Or maybe you're looking for the best LED lighting for a new construction project?

[Let's connect](#) and discuss how we can help your facility shine.



LED Lighting Product Categories

Unlock your ideal solution with our range of product options. Tailor your choice to your needs and enjoy exceptional quality and performance at every level.

ISON™

THE HIGHEST STANDARD OF PERFORMANCE AND QUALITY TO PROVIDE BEST-IN-CLASS RETURN ON INVESTMENT AND LOWEST PAY-BACK PERIOD.

LPW

Highest In Industry

CONTROLS

Capable of Advanced Controls

L70

100,000+ Hours

FEATURES

Best-in-Class

PRICE

Premium

CERTIFICATIONS

Best-in-Class

OPERATING TEMPS

Best-in-Class per Product Application

HARRIS

ABOVE-AVERAGE PERFORMANCE WITH A COMPLETE ARRAY OF FEATURES AND OPTIONS TO MEET MOST DESIRED INDUSTRY STANDARDS.

LPW

Exceeds Industry Standards

CONTROLS

Capable of Advanced Controls

L70

100,000 Hours

FEATURES

Best-in-Class

PRICE

Competitive

CERTIFICATIONS

Best-in-Class

OPERATING TEMPS

45°-55°C Depending on Application

TRITONPRO™

CONTRACTOR-FOCUSED PRODUCTS THAT PROVIDE MAXIMUM IN-FIELD FLEXIBILITY WHILE MEETING INDUSTRY STANDARDS.

LPW

Meets or Exceeds
DLC(R) Standards

CONTROLS

Capable of Standard Controls with
Limited Advanced Control Options

L70

50,000+ Hours

FEATURES

Set Options with In-field Adjustability

PRICE

Low Cost

CERTIFICATIONS

Meets Industry Standards

OPERATING TEMPS

40°-55°C Depending on Application

DesignLights Consortium® (DLC®)

The DLC® Qualified Product Listing has high-quality, energy-efficient lighting products that qualify for rebates in utility and energy efficiency programs.



DLC® LISTED STANDARD

Lighting products that meet the basic energy efficiency and performance requirements set by the DLC®. They are designed to provide significant energy savings compared to traditional lighting solutions. DLC® Listed Standard products meet certain criteria for efficacy, color quality, and other performance factors.



DLC® LISTED PREMIUM

Lighting products go beyond the basic requirements established by the DLC®. They are designed to achieve even higher energy savings and offer superior light quality and controllability. DLC® Listed Premium products demonstrate a significant improvement in terms of energy efficiency, color accuracy, and other performance metrics compared to DLC® Listed Standard products. They represent the top tier of energy-efficient lighting solutions.

Rebate Eligibility

Energy-efficient lights qualify for money-saving incentives offered by utility companies and governments. These incentives aim to encourage the use of efficient lighting solutions.

To qualify, choose any Orion DLC®-listed lighting products to help offset the cost of upgrading to energy-efficient lighting. It's a straightforward way to save money while contributing to a more sustainable future.

Need Help Navigating the Rebate Process?

Contact our customer service team at **920-482-0520**.

Certifications Overview



NSF

NSF (National Sanitation Foundation) evaluated and tested fixtures per NSF/ANSI 2 (Food Equipment regulations) for use in non-food zone and splash zone locations. Non-food zones are areas where contact of food with the fixture is unexpected. Splash zones are areas where spills and splashes from liquids used in the processing or cleaning procedure may get on the surface of the fixtures.



TAA

The United States Trade Agreements Act (TAA) states that in order to be considered TAA-compliant, a fixture must have a minimum of 50% of its total manufacturing cost coming from either the United States or a country designated under the TAA. The product has undergone substantial transformation in the US or a TAA-designated country.



BABA

BABA establishes a domestic preference for Federal financial assistance obligated for infrastructure projects. The BABA preference applies to three separate product categories including manufacturing that include LED lighting products.



BAA

The Buy American Act (BAA) is a federal law that pertains to goods used in the United States. It establishes a minimum requirement for the percentage of materials or parts sourced from the US in manufactured items. This product is manufactured in Wisconsin and is a COTS product.



DLC® PREMIUM

The fixtures is DLC® Premium compliant. It has been evaluated and certified based on light quality, performance, lifespan, and enhanced energy efficiency. Within this classification, “Premium” signifies a higher level of performance compared to the “Standard” classification. In both the United States and Canada, the majority of utility companies mandate that fixtures must hold a DLC® rating to be eligible for rebates.



DLC® STANDARD

The fixtures is DLC® Standard compliant. It has been evaluated and certified based on light quality, performance, lifespan, and enhanced energy efficiency. In both the United States and Canada, the majority of utility companies mandate that fixtures must hold a DLC® rating to be eligible for rebates.



UL CERTIFIED

The fixture has been tested and met defined requirements by UL (Underwriter Laboratories) standards for fire safety and electrical safety. For use both in U.S. and Canada.

Certifications Overview



UL DAMP RATED

The fixture is tested and approved by UL for areas that are regularly exposed to moisture and condensation. It does not cover direct water contact. Typically used in manufacturing areas exposed to humidity, moisture and condensation. They can also be used outdoors in areas that are protected from direct rain or snow exposure.



UL WET RATED

The fixture is tested and approved by UL to be installed anywhere that liquids will come in direct contact. Typically used for outdoor lighting.

IP65

IP65

This fixture is IP-rated (Ingress Protection code) rated for protection against dust and from water jets from any direction. IP code are defined by IEC 60529 International Standard.

IP66

IP66

This fixture is IP-rated for protection against dust and water resistant against powerful jets. IP code are defined by IEC 60529 International Standard.

IP67

IP67

This fixture is IP-rated for protection against dust and protected from immersion (up to 1m) for a limited time. IP code are defined by IEC 60529 International Standard.



IK08

This fixture has an IK08 rating, signifying its ability to withstand impact up to 5 joules or the equivalent of a 1.7kg (3.7 lb) mass dropped from a height of 300mm (11.8 in) onto the surface. These IK ratings adhere to the specifications outlined in the IEC 62262 International Standard.



IK10

This fixture holds an IK10 rating, indicating its capacity to provide Enclosure Protection against impact of up to 20 joules, equivalent to the impact of a 5kg (11 lb) mass dropped from a height of 400mm (15.7 in) onto the surface. These IK ratings are established according to the IEC 62262 International Standard.

The image is a composite graphic for a presentation on interior LED lighting. It features a background of a large, open-plan space, likely a school cafeteria or gymnasium, with a high ceiling and exposed structural elements. The space is divided into two main areas: a workshop area on the left with red workbenches and a large wall of trophies, and a classroom area on the right with rows of desks and blue chairs. A large, semi-transparent circle with a blue-to-green gradient border is centered over the image. Inside this circle, the text "Interior LED Lighting Solutions" is written in a white, sans-serif font. The circle is also outlined with a dotted white line. In the top right corner, there is a small, solid green circle. In the bottom right corner, there is a small, dotted white circle. The overall lighting is dim, emphasizing the text and the architectural details of the space.

Interior LED Lighting Solutions



HIGH BAY / LOW BAY

PG 11

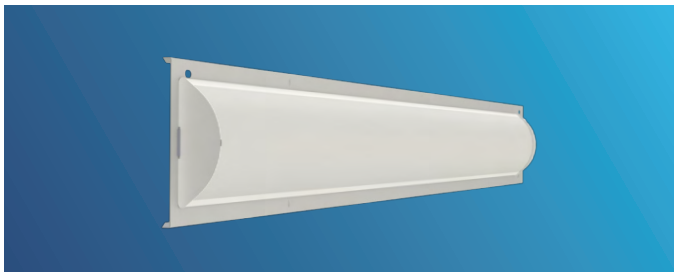
Ideal fixtures for warehouse, manufacturing, and inventory management facilities with varying ceiling heights up to 40'.



LINEAR

PG 24

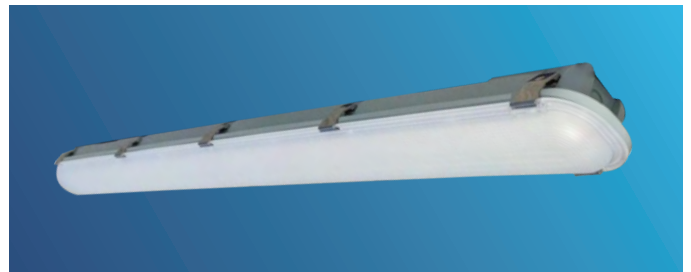
Commonly used in commercial and retail settings. These fixtures are easy to install and can be grouped or continuously run to create lighting uniformity.



LINEAR RETROFIT

PG 27

Reduce your energy expenses by effortlessly upgrading from outdated fluorescent technology to LED using our user-friendly LED linear retrofit kits. These kits not only ensure a long fixture life but also help you save on labor costs during the retrofitting process to LED.



ENCLOSED HIGH BAYS / VAPORTIGHTS

PG 29

Demanding conditions and harsh environments, making them ideal for use in manufacturing, food preparation, and food processing facilities. Their durability ensures reliable performance even in challenging settings.

HEALTHY LIFE / UV-C

PG 34

In high-traffic environments where customer safety is a top priority, our advanced LED UV-C light spectrum technology enables continuous air sanitization. This cutting-edge technology effectively disinfects areas like offices, classrooms, and healthcare settings.

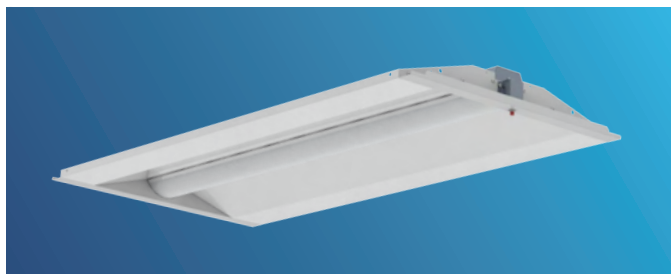




RETROFIT LINEAR HIGH BAY

PG 37

Retrofits existing T12/T8 linear high bay fluorescent fixtures to LED, in high ceiling retail settings.



TROFFER

PG 38

Available in various size fixtures, troffer fixtures are utilized for drop-in ceilings and surface-mount applications where even light distribution is needed. Typically used in commercial and office settings.



TROFFER RETROFIT

PG 41

Designed for retrofitting existing T12/T8 fluorescent troffers with an easy retrofit bracket system, our troffer retrofit allows for quick installation in under two minutes.



EMERGENCY / EXIT

PG 43

Used to show patrons and employees where to exit in case of an emergency to comply with local codes and ordinances.

LED HIGH BAY

ISON™ LED HIGH BAY FIXTURE, GEN 2

LMAF2 SPECIFICATIONS

Fixture Sizes

- 4' or 8'

Lumen Range / LPW

- 9,000 or 18,000 Lumens, up to 171 LPW

Factory Installed Features and Options

- 120-277v, 347v and 480v
- 80 CRI; 4000K CCT Standard
- No Lens or Acrylic Frosted Lens Available

Control Types Available

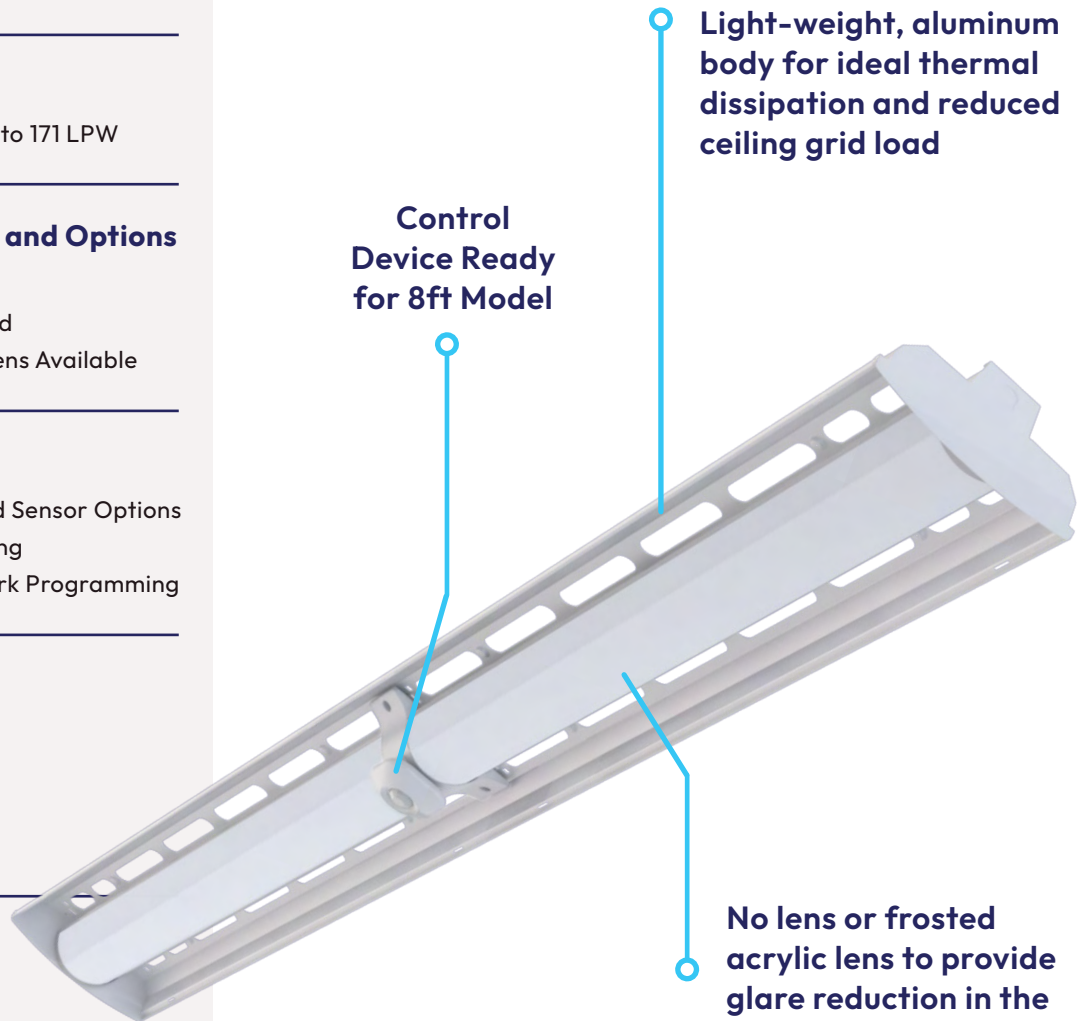
- Factory Installed Control and Sensor Options
- On Site Network Programming
- Internet/Cloud Based Network Programming

Certifications / Listings*

- Buy American Act Compliant
- UL/cUL Listed
- UL Damp Rated
- DLC® Listed Standard

Mounting Options

- Suspended Mounting



*Varies by fixture configuration

LED HIGH BAY

HARRIS LED HIGH BAY STAR LINE, GEN 2

HHSL2 SPECIFICATIONS

Fixture Sizes

- 2' or 4'

Lumen Range / LPW

- 9,000 to 72,000 lumens, up to 185 LPW

Factory Installed Features and Options

- 120-277v, 347v, and 480v
- 80 CRI Standard; 4000K and 5000K
- Five Light Distribution Types: No Lens, Acrylic Frosted Narrow, Acrylic Frosted General, Acrylic Clear Focused, Acrylic Frosted Glare Reduction
- Multiple Power Connection Options
- 6kV/3kA Surge Protection Standard
- 20kV/10kA Additional Surge Protection Optional
- Orange Painted End Cap for Emergency Fixture Identifier
- Battery Back Up

Field Installed Options

- Battery Back Up Kits
- Wireguard Kit
- Available in 120-277V, 347V, 480V

Control Types Available

- Field or Factory Installed Control and Sensor Options
- Manual Programming Sensors
- Remote Programming Sensors
- Onsite Network Programming
- Internet/Cloud Based Network Programming

Certifications / Listings*

- Buy American Act Compliant
- UL/cUL Listed
- UL Damp Rated
- DLC® Listed Standard
- DLC® Listed Premium
- BABA Compliant

Mounting Options

- Suspended Mounting
- Rigid Mounting
- Surface Mounting



Versatile hanging options

Multiple power connection options



Five light distribution types to meet your application needs

Narrow, lightweight aluminum design for optimal heat dissipation with ease handling in the field that reduces installation time and cost

*Varies by fixture configuration

LED HIGH BAY

HARRIS LED HIGH BAY STAR LINE HIGH EFFICACY, GEN 2

HHSL2 HE SPECIFICATIONS

Fixture Sizes

- 2' or 4'

Lumen Range / LPW

- 9,000 to 45,000 lumens, up to 198 LPW

Factory Installed Features and Options

- 120-277v, 347v, and 480v
- 80 CRI Standard; 4000K and 5000K
- Five Light Distribution Types: No Lens, Acrylic Frosted Narrow, Acrylic Frosted General, Acrylic Clear Focused, Acrylic Frosted Glare Reduction
- Multiple Power Connection Options
- 6kV/3kA Surge Protection Standard
- 20kV/10kA Additional Surge Protection Optional
- Orange Painted End Cap for Emergency Fixture Identifier
- Battery Back Up
- High Ambient Operating Temp. Available to 65c

Field Installed Options

- Battery Back Up Kits
- Wireguard Kit
- Available in 120-277V, 347V, 480V

Control Types Available

- Field or Factory Installed Control and Sensor Options
- Manual Programming Sensors
- Remote Programming Sensors
- Onsite Network Programming
- Internet/Cloud Based Network Programming

Certifications / Listings*

- Buy American Act Compliant
- UL/cUL Listed
- UL Damp Rated
- DLC® Listed Standard
- DLC® Listed Premium

Mounting Options

- Suspended Mounting
- Rigid Mounting
- Surface Mounting

Wireguard kits available for protection when exposed to potential impact

Narrow, light-weight aluminum design for optimal with ease of handling in the field that reduces installation time and labor costs



Five light distribution types to meet your application needs

High efficacy chips for optimal performance

*Varies by fixture configuration

LED HIGH BAY

HARRIS LUMEN SELECT LED HIGH BAY, GEN 1

LSLH1 SPECIFICATIONS

Fixture Sizes

- 2' or 4'



Lumen Range / LPW

- 8,500 to 30,000 Lumens, up to 172 LPW.
- Each fixture model has 6 different adjustable lumen outputs

Factory Installed Features and Options

- 120-277v, 347v, and 480v
- 80 CRI Standard; 4000K or 5000K Available
- Two Light Distribution Options: No Lens or Frosted Acrylic Lens
- 6kV/3kA Surge Protection Standard
- 20kV/10kA Additional Surge Protection Optional
- Orange Painted End Cap for Emergency Fixture Identifier
- Open Area or Aisle Area Application

Field Installed Options

- Battery Back Up Kit
- Available in 120-277V, 347V, 480V

Control Types Available

- Factory Installed Control and Sensor Options
- Manual Programming Sensors

Certifications / Listings*

- Buy American Act Compliant
- UL/cUL Listed
- UL Damp Rated

Mounting Options

- Suspended Mounting
- Rigid Mounting

*Varies by fixture configuration

Multiple power connection options; different whip lengths for less installation time

Easy to access dipswitch allows for lumen output to be adjusted in the field

Acrylic frosted lens option reduces glare and enhances low bay applications

Aisle or Open Application for different light distributions

LED HIGH BAY

HARRIS LED PATRIOT SLIMLINE™ HIGH BAY, GEN 2

HBHS2 SPECIFICATIONS

Fixture Sizes

- 4' Standard

Lumen Range / LPW

- 12,000 to 30,000 Lumens, up to 181 LPW

Factory Installed Features and Options

- 120-277v, 347v and 480v
- 80 CRI Standard; 4000K and 5000K
- Two Light Distribution Types: No Lens or Frosted Acrylic Lens
- Multiple Power Connection Options
- 6kV/3kA Surge Protection Standard
- 20kV/10kA Additional Surge Protection Optional
- Orange Painted End Cap for Emergency Fixture Identifier
- Battery Back Up

Field Installed Options

- Wireguard Kits
- Lens Install Kits
- External Transformers
- For High Voltage 347v/480v Installation

Control Types Available

- Factory or Field Installed Controls and Sensors
- Manual Programming Sensors
- Remote Programming Sensors
- On Site Network Programming Sensors
- Internet/Cloud Based Network Programming

Certifications / Listings*

- Buy American Act Compliant
- UL/cUL Listed
- UL Damp Rated
- DLC® Listed Standard
- DLC® Listed Premium

Mounting Options

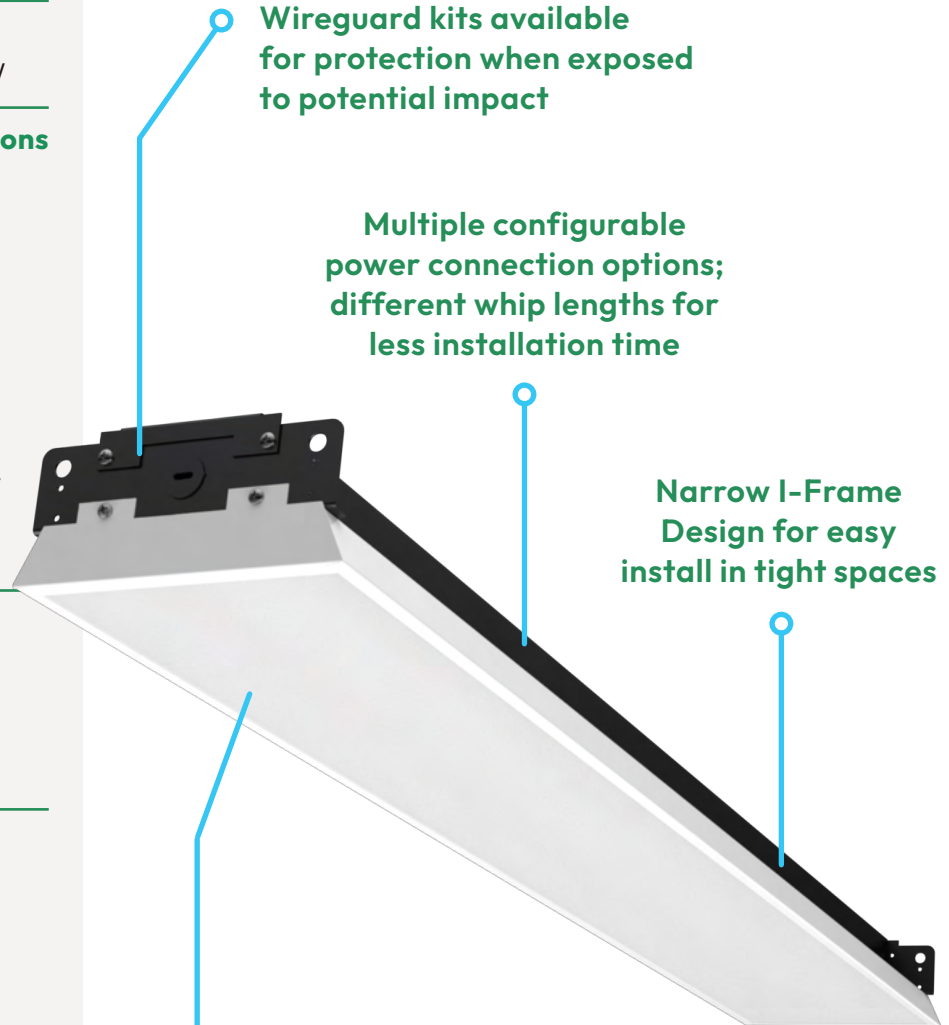
- Suspended Mounting
- Rigid Mounting

Wireguard kits available for protection when exposed to potential impact

Multiple configurable power connection options; different whip lengths for less installation time

Narrow I-Frame Design for easy install in tight spaces

Field installable lens kit available to add glare reduction in the field if needed



*Varies by fixture configuration

LED HIGH BAY

HARRIS LED HIGH BAY, GEN 3

HBAC3 SPECIFICATIONS

Fixture Sizes

- 4' Standard

Lumen Range / LPW

- 14,000 to 28,000 Lumens, up to 173 LPW

Factory Installed Features and Options

- 120-277v, 347v, and 480v
- 80 CRI Standard; 4000K and 5000K Available
- Two Light Distribution Types: No Lens or Frosted Acrylic Lens
- Multiple Power Connection Options
- 6kV/3kA Surge protection Standard
- 20kV/10kA Additional Surge Protection Optional
- Orange Painted End Cap for Emergency Fixture Identifier
- Battery Back Up

Field Installed Options

- Wireguard Kits
- Lens Install Kits
- External Transformers
- For High Voltage 347v/480v Installation

Control Types Available

- Factory or Field Installed Controls and Sensors
- Manual Programming Sensors
- Remote Programming Sensors
- On Site Network Programming Sensors
- Internet/Cloud Based Network Programming

Certifications / Listings*

- Buy American Act Compliant
- UL/cUL Listed
- UL Damp Rated

Mounting Options

- Suspended Mounting
- Rigid Mounting



Unique modular design allows for easy access to components and performance upgrades

Aluminum fixture body provides superior thermal management for longer life and higher performance



Platform or Mate N Lock power connections to reduce installation time

Field installable Acrylic Frosted Lens Kit available

*Varies by fixture configuration

LED HIGH BAY

HARRIS STAR LINE FREEZER HIGH BAY, GEN 1

HSLF1 SPECIFICATIONS

Fixture Sizes

- 4' Standard

Lumen Range / LPW

- 15,000 to 29,000 Lumens, up to 172 LPW

Factory Installed Features and Options

- 120-277v, 347v and 480v
- 80 CRI Standard; 4000K and 5000K Available
- Four Light Distribution Options: No Lens, Acrylic Frosted General Lens, Acrylic Frosted Narrow Lens, Acrylic Clear Focus Lens
- Multiple Power Connection Options
- 6kV/3kA Surge Protection Standard
- 20kV/10kA Additional Surge Protection Available
- Orange Painted End Cap for Emergency Fixture Identifier

Field Installed Options

- Wireguard Kits

Control Types Available

- Factory Installed Sensor Options
- Remote Programming Sensor

Certifications / Listings*

- Buy American Act Compliant
- UL/cUL Listed
- UL Damp Rated
- DLC® Listed Premium

Mounting Options

- Suspended Mounting
- Rigid Mounting

Multiple Power Connection Options

Integrated controls are compatible with freezer environments

Wireguard kits available for protection when exposed to potential impact

Robust electronic components designed for freezer temperatures

*Varies by fixture configuration

LED HIGH BAY

HARRIS LED HIGH BAY UFO, GEN 4

HHUF4 SPECIFICATIONS

Fixture Sizes

- Varies By Configuration

Lumen Range / LPW

- 15,000 to 36,000 Lumens (tandem bracket available for increased lumen output up to 72,000 lumens), up to 150 LPW

Factory Installed Features and Options

- 120-277v or 277v-480v
- 80 CRI Standard; 4000K or 5000K Available
- 6' Power Cord Included
- Fixture Available in White or Black
- Fixture Ships with Standard Eye Bolt
- 6kV/3kA Surge Protection Standard
- 20kV/10kA Additional Surge Protection Optional

Field Installed Options

- Additional Light Beam Control with Polycarbonate Refractor or Aluminum Reflector
- Battery Back Up Kit
- 120-277v

Control Types Available

- Field Installed Controls and Sensors Options
- Remote Programming Sensors
- Remote Programming Sensors with Zoning
- On Site Network Programming
- Internet/Cloud Based Network Programming

Certifications / Listings*

- NSF/ANSI Standard 2
- IP65 Rating
- UL/cUL Listed
- IK10 Impact Rating
- UL Wet Location Listed
- DLC® Listed Premium

Mounting Options

- Surface Mounting
- Tandem Mounting
- Pendant Mounting

*Varies by fixture configuration



LED HIGH BAY

HARRIS LED HIGH BAY UFO, GEN 3

HHUF3 SPECIFICATIONS

Fixture Sizes

- Varies By Configuration

Lumen Range / LPW

- 14,500 to 35,500 Lumens, (tandem bracket available for increased lumen output), up to 157 LPW

Factory Installed Features and Options

- 120-277v or 277v-480v
- 80 CRI Standard; 4000K or 5000K Available
- Multiple Power Connection Options
- Fixture Available in White or Black
- Fixture Ships with Standard Eye Bolt
- 6kV/3kA Surge Protection Standard
- 20kV/10kA Additional Surge Protection Optional

Field Installed Options

- Additional Light Distribution Types: Polycarbonate Refractor or Aluminum Reflector
- Battery Back Up Kit
- 120-277v

Control Types Available

- Field Installed Controls and Sensors Options
- Remote Programming Sensors
- Remote Programming Sensors with Zoning
- On Site Network Programming
- Internet/Cloud Based Network Programming

Certifications / Listings*

- NSF/ANSI Standard 2
- IP65 Rating
- UL/cUL Listed
- IK10 Impact Rating
- UL Wet Location Listed

Mounting Options

- Surface Mounting
- Pendant Mounting
- Tandem Mounting



*Varies by fixture configuration

LED HIGH BAY

TRITONPRO™ COMPACT LINEAR HIGH BAY, GEN 1

MLHB1 SPECIFICATIONS

Fixture Sizes

- 1', 2' 3' or 4'

Lumen Range / LPW

- 9,000 to 60,000 Lumens, up to 147 LPW

Factory Installed Features and Options

- 120-277v, 277-480v
- 80 CRI; Field Adjustable CCT 4000K or 5000K Standard
- Three Lens Distribution Types:
Polycarbonate Aisle Narrow,
Polycarbonate Glare Reduction Medium,
Polycarbonate Wide Distribution
- 6kV/3kA Surge Protection Standard
- Sensor Base Comes Standard
- Battery Back Up

Field Installed Options

- Battery Back Up Kit
- Available for 120-277v and 277-480v

Control Types Available

- Field Installed Control and Sensor Options
- Remote Programming Sensors

Certifications / Listings*

- UL/cUL Listed
- UL Damp Rated
- DLC® Listed Standard and Premium

Mounting Options

- Surface Mounting
- Suspended Mounting
- Rigid Pendent Mounting

Compact design with optimal thermal performance for ease of handling during installation to decrease installation time and cost

External CCT Adjustable Switch

Impact resistant polycarbonate lenses

Sensor Base included for ease of field install sensors



*Varies by fixture configuration

LED HIGH BAY

ISON™ LED HIGH BAY, GEN 3

HBIF3 SPECIFICATIONS

Fixture Sizes

- 4' Standard

Lumen Range / LPW

- 11,000 to 24,000 Lumens, up to 214 LPW

Factory Installed Features and Options

- 120-277v, 347v, and 480v
- 70 CRI and 80 CRI Available; 4000K and 5000K Options
- Three Light Distribution Options: No Lens, Frosted Acrylic, and Clear Polycarbonate
- Three Power Connection Options: Platform, Hardwire, and Mate N Lock
- 6kV/3kA Surge Protection Standard
- 20kV/10kA Additional Surge Protection Optional
- Orange Painted End Cap for Emergency Fixture Identifier
- Battery Back Up

Field Installed Options

- Wireguard Kit
- Field Install/Replacement Lens Kit

Control Types Available

- Factory and Field Installed Control Options
- Manual Programming Sensors
- Remote Programming Sensors
- Onsite Network Programming
- Internet/Cloud Based Network Programming

Certifications / Listings*

- Buy American Act Compliant
- UL/cUL Listed
- UL Damp Rated

Mounting Options

- Suspended Mounting
- Rigid Mounting

Aluminum fixture body provides superior thermal management for longer life and higher performance

Configurable Power connections for fast installation

Wireguard Kits available for protection when exposed to potential impact



Frosted Acrylic lens for glare control or Clear Polycarbonate for dusty environments

*Varies by fixture configuration

LED HIGH BAY

HARRIS LED WET RATED ROUND HIGH BAY, GEN 1

WRRH1 SPECIFICATIONS

Fixture Sizes

- Varies by Configuration

Lumen Range / LPW

- 13,000 or 19,000 Lumens, up to 132 LPW

Factory Installed Features and Options

- 120-277v
- 80 CRI Standard; 4000K or 5000K Available
- 6ft Power Cord Standard
- 10kV/5kA Surge Protection Standard

Control Types Available

- Factory Installed Controls and Sensors Options
- On Site Network Programming Controls
- Internet/Cloud Based Network Programming Controls

Certifications / Listings*

- UL/cUL Listed
- UL Wet Listed
- IP66 Rated
- IP65 Rated With Sensor
- DLC® Listed Standard

Mounting Options

- Hook Mounting Comes Standard with SE Cable

Die-cast hook and hard service power cord come standard for ease of installation



Heavy-duty die-cast housing provides maximum heat dissipation

Prismatic Lens provides ideal lighting coverage and minimum glare

*Varies by fixture configuration

LED HIGH BAY

HARRIS LED HIGH BAY HARSH APPLICATIONS, GEN 1

AHHA1 SPECIFICATIONS

Fixture Sizes

- Varies By Configuration

Lumen Range / LPW

- 21,000 or 28,000 Lumens, up to 147 LPW

Factory Installed Features and Options

- 120-347v
- 80 CRI; 5000K Standard
- Standard 1/2" NPT Conduit Power Entry
- 6ft Power Supply Wires Standard

Field Installed Options

- Flexible Polyamide Conduit, Protection Kit

Certifications / Listings*

- UL/cUL Listed
- UL Wet Listed
- IP65
- DLC® Listed Standard

Mounting Options

- Surface Mounting
- Pendent Mounting



*Varies by fixture configuration

LED LINEAR

HARRIS LED MULTIPURPOSE LINEAR, GEN 2

MPHL2 SPECIFICATIONS

Fixture Sizes

- 4' or 8'

Lumen Range / LPW

- 2,000 to 12,000 Lumens, up to 168 LPW

Factory Installed Features and Options

- 120-277v and 347v
- 80 CRI Standard; 3500K, 4000K, or 5000K Available
- Two Light Distribution Types: No Lens and Acrylic Frosted Lens
- Multiple Power Connection Options
- 10 kA Additional Surge Protection
- Battery Back Up
- Continuous Run System
- Plastic End Caps

Field Installed Options

- Wireguard Kit
- Tandem Kit
- Battery Back Up Kit

Control Types Available

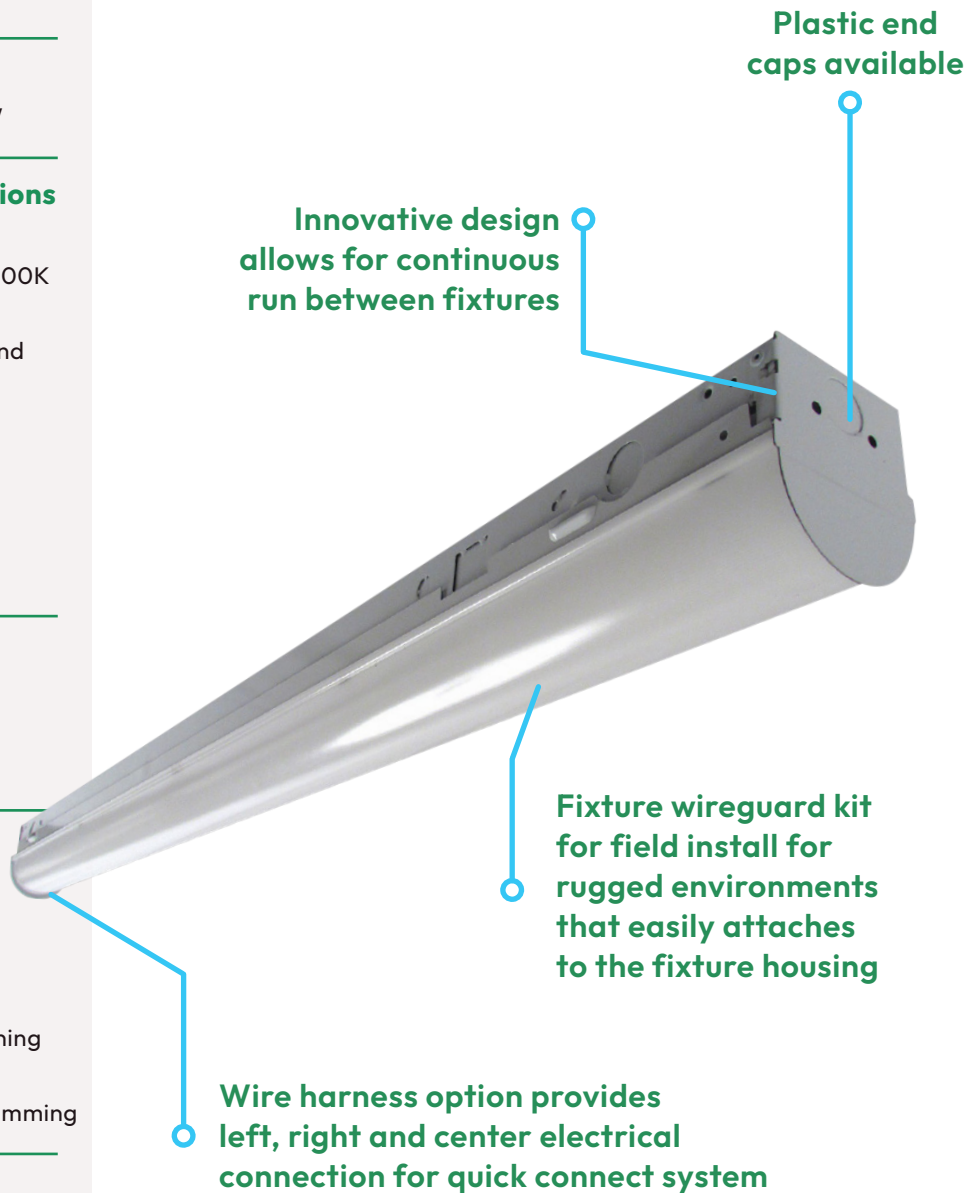
- Factory or Field Installed Control and Sensor Options
- Manual Programming Sensor
- Remote Programming Sensor
- Remote Programming Sensor with Zoning
- On Site Network Programming
- Internet/Cloud Based Network Programming

Certifications / Listings*

- | | |
|------------------------------|------------------------|
| • Buy American Act Compliant | • UL Listed Damp |
| • UL/cUL Listed | • DLC® Listed Standard |
| | • BABA Compliant |

Mounting Options

- | | |
|----------------------|------------------|
| • Surface Mounting | • Continuous Run |
| • Suspended Mounting | |



LED LINEAR

HARRIS LED STRIP LUMINAIRE, GEN 2

SFHC2 SPECIFICATIONS

Fixture Sizes

- 4' or 8'

Lumen Range / LPW

- 2,000 to 10,000 Lumens, up to 182 LPW

Factory Installed Features and Options

- 120-277v
- 80 CRI Standard; 3500K, 4000K, or 5000K Available
- Three Light Distribution Options: No Lens, Frosted Acrylic 2' Lens, Frosted Acrylic 3' Lens
- Multiple Power Connection Options
- Battery Back Up

Field Installed Options

- Wireguard Kits

Control Types Available

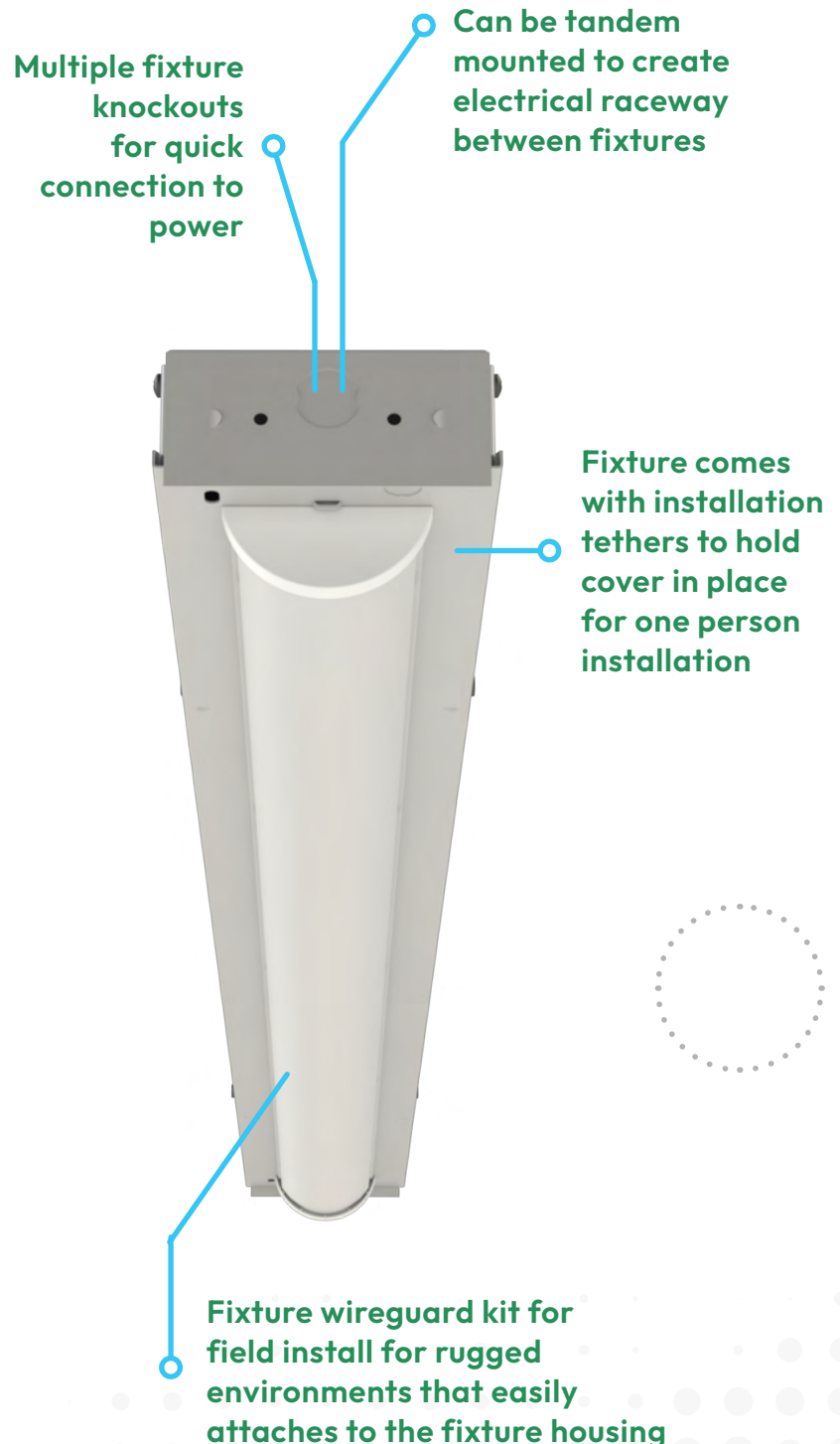
- Factory and Field Installed Sensor and Controls Available
- Manual Programming Sensors
- Remote Programming Sensors
- Remote Programming with Zoning Sensors
- On Site Network Programming
- Internet/Cloud Based Network Programming

Certifications / Listings*

- Buy American Act Compliant
- UL/cUL Listed
- DLC® Listed Standard
- BABA Compliant

Mounting Options

- Surface Mounting
- Suspended Mounting



*Varies by fixture configuration

LED LINEAR

HARRIS LED QUICK ACCESS STRIP, GEN 1

HQAS1 SPECIFICATIONS

Fixture Sizes

- 4' or 8'

Lumen Range / LPW

- 3,000 to 8,000 Lumens, up to 151 LPW

Factory Installed Features and Options

- 120-277v
- 80 CRI Standard; Field Selectable CCT: 3500K, 4000K and 5000K
- Polycarbonate Frosted Lens Standard
- Battery Back Up
- Hardwired Standard

Field Installed Options

- Cord Kits

Control Types Available

- Factory or Field Installed Control and Sensor Options
- Manual Programming Sensors

Certifications / Listings*

- UL/cUL Listed
- UL Damp Rated
- DLC® Listed Standard

Mounting Options

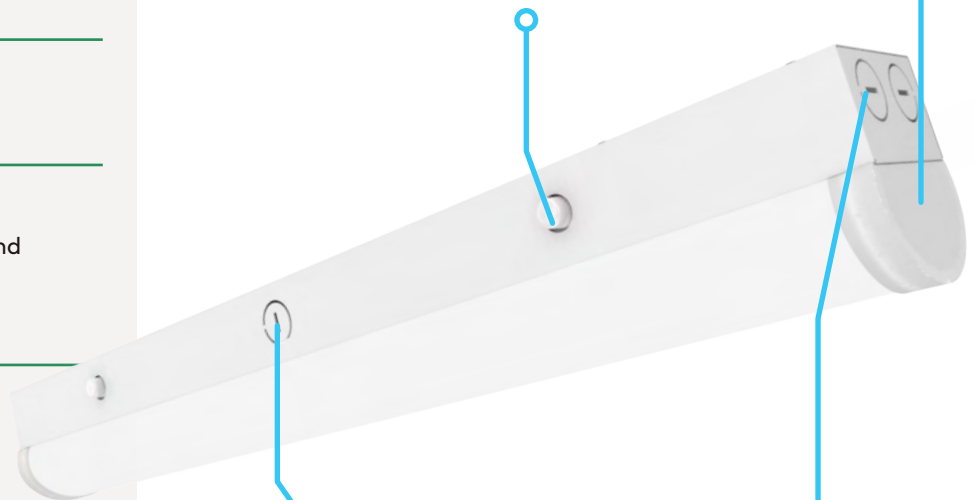
- Surface Mounting
- Suspended Mounting
- Continuous Run

Translucent end cap option for seamless look with continuous run

Spring loaded buttons for quick access to fixture components and field adjustment of CCT

Multiple knockout locations for ease of installation, maintenance and wiring

Continuous run surface or suspended mounting brackets available



*Varies by fixture configuration

LED LINEAR RETROFIT

HARRIS LED STRIP RETROFIT, GEN 2

SFHR2 SPECIFICATIONS

Fixture Sizes

- 4' or 8' Length, 4.25" Width or 5.00" Width Retrofit Kits

Lumen Range / LPW

- 2,000 to 10,000 Lumens, up to 182 LPW

Factory Installed Features and Options

- 120-277v
- 80 CRI Standard; 3500K, 4000K, and 5000K Available
- Three Light Distribution Options: No Lens, Frosted Acrylic 2' Lens, Frosted Acrylic 3' Lens
- Battery Back Up

Field Installed Options

- Wireguard Kits

Control Types Available

- Factory and Field Installed Sensor and Controls Available
- Manual Programming Sensors
- Remote Programming Sensors
- Remote Programming with Zoning Sensors
- On Site Network Programming
- Internet/Cloud Based Network Programming

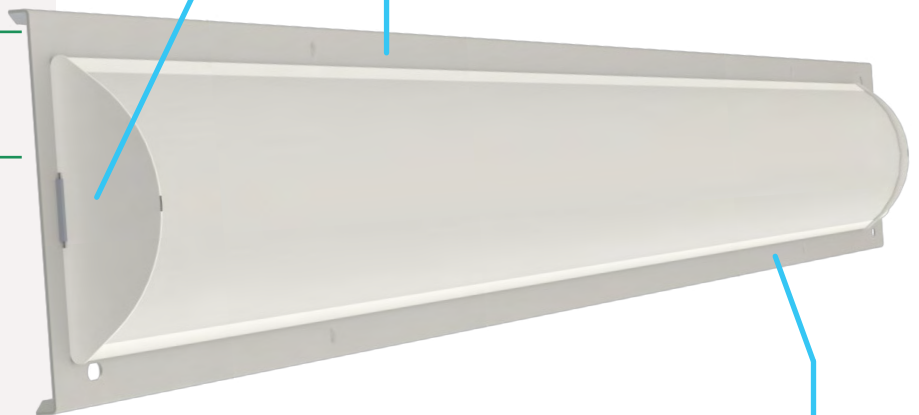
Certifications / Listings*

- Buy American Act Compliant
- UL/cUL Listed
- DLC® Listed Standard
- BABA Compliant

Can be tandem mounted to create electrical raceway

Fixture wireguard kit for field install for rugged environments available that easily attaches to the existing fixture housing

Fixture comes with installation tethers to hold cover in place for one person installation



*Varies by fixture configuration

LED LINEAR RETROFIT

TRITONPRO™ LED LUMEN SELECT STRIP RETROFIT, GEN 2

LSSR2 SPECIFICATIONS

Fixture Sizes

- 4' or 8' Retrofit Lengths

Lumen Range / LPW

- 3,000 to 10,000 Lumens, up to 148 LPW.
- Each lumen package allows for field adjustment of lumen output

Factory Installed Features and Options

- 120-277v
- 80 CRI; Field Adjustable CCT from 3500K, 4000K, and 5000K Standard
- Polycarbonate Frosted Lens Standard
- Battery Back Up

Control Types Available

- Field Installed Control and Sensors
- Remote Programming Sensors

Certifications / Listings*

- UL/cUL Listed
- UL Damp Rated
- Field Adjustable Wattage/Light Output and CCT
- DLC® Listed Standard



*Varies by fixture configuration

LED VAPORTIGHT

ISON™ LED VAPORTIGHT NARROW BODY, GEN 2

VTON2 SPECIFICATIONS

Fixture Sizes

- 4' or 8'

Lumen Range / LPW

- 3,000 to 20,000 Lumens, up to 165 LPW

Factory Installed Features and Options

- 120-277v, 347v, and 480v
- 80 CRI Standard; 4000K and 5000K Available
- Acrylic, Impact Resistant, Ribbed Frosted Lens
- Multiple Power Connection Options
- 6kV/3kA Surge Protection Standard
- 20kV/10kA Additional Surge Protection Optional
- Battery Back Up
- Cold Temperature Option (-40C)

Control Types Available

- Factory Installed Control and Sensor Options
- Manual Programming Sensors
- Remote Programming Sensors

Certifications / Listings*

- Buy American Act Compliant
- UL/cUL Listed
- UL Wet Listed
- IP67
- IP66 When Using WSxx and WBxx Sensors
- IP65 When Using WWxx Sensor
- NEMA 4X Housing
- UL 5VA (f1) Fiberglass Housing
- High Pressure Washdown Up To 1500 PSI
- DLC® Listed Standard

Mounting Options

- Surface Mounting (Standard-Factory Shipped)
- Suspended Mounting



*Varies by fixture configuration

LED VAPORTIGHT

ISON™ LED VAPORTIGHT NARROW BODY NSF/ANSI STANDARD 2 CERTIFIED, GEN 2

VTON2 SPECIFICATIONS

Fixture Sizes

- 4' or 8'

Lumen Range / LPW

- 3,000 to 20,000 Lumens, up to 165 LPW

Factory Installed Features and Options

- 120-277v, 347v, and 480v
- 80 CRI Standard; 4000K and 5000K Available
- Acrylic, Impact Resistant, Ribbed Frosted Lens
- Multiple Power Connection Options
- 6kV/3kA Surge Protection Standard
- 20kV/10kA Additional Surge Protection Optional
- Battery Back Up
- Cold Temperature Option (-40C)

Certifications / Listings*

- Buy American Act Compliant
- NSF/ANSI Standard 2
- UL/cUL Listed
- UL Wet Listed
- IP67
- NEMA 4X Housing
- UL 5VA (f1) Fiberglass Housing
- High Pressure Washdown Up To 1500 PSI
- DLC® Listed Standard

Mounting Options

- Surface Mounting (Standard-Factory Shipped)



*Varies by fixture configuration

LED VAPORTIGHT

ISON™ LED VAPORTIGHT WIDE BODY, GEN 2

VTOD2 SPECIFICATIONS

Fixture Sizes

- 2' or 4'

Lumen Range / LPW

- 13,000 to 38,000 Lumens, up to 167 LPW

Factory Installed Features and Options

- 120-277v, 347v, and 480v
- 80 CRI Standard; 4000K and 5000K Available
- Frosted Acrylic Lens Standard
- Multiple Power Connection Options
- 6kV/3kA Surge Protection Standard
- 20kV/10kA Additional Surge Protection Optional
- Battery Back Up
- Cold Temperature Option (-40C)

Control Types Available

- Factory Installed Control and Sensor Options
- Manual Programming Sensors
- Remote Programming Sensors

Certifications / Listings*

- Buy American Act Compliant
- UL/cUL Listed
- UL Wet Listed
- IP67 for 4' Fixtures
- IP69 for 2' Fixtures
- IP66 When Using WSxx and WBxx Sensors
- IP65 When Using WWxx Sensor
- NEMA 4X Housing
- UL 5VA (f1) Fiberglass Housing
- High Pressure Washdown Up To 1500 PSI
- DLC® Listed Standard

Mounting Options

- Surface Mount (Standard – Factory Shipped)
- Suspended Mounting
- Rigid Mounting

*Varies by fixture configuration

Cold Temperature option for cold storage environments

Configurable Power connections for fast installation



Marine Grade Stainless Steel latches and mounting brackets to withstand corrosion

Durable acrylic lens and reinforced fiberglass body built to withstand tough environments

LED VAPORTIGHT

ISON™ LED VAPORTIGHT WIDE BODY NSF/ANSI STANDARD 2 CERTIFIED, GEN 2

VTOD2 SPECIFICATIONS

Fixture Sizes

- 2' or 4'

Lumen Range / LPW

- 13,000 to 38,000 Lumens, up to 167 LPW

Factory Installed Features and Options

- 120-277v, 347v, and 480v
- 80 CRI Standard; 4000K and 5000K Available
- Frosted Acrylic Lens Standard
- Multiple Power Connection Options
- 6kV/3kA Surge Protection Standard
- 20kV/10kA Surge Protection Available
- Battery Back Up
- Cold Temperature Option (-40C)

Certifications / Listings*

- Buy American Act Compliant
- NSF/ANSI Standard 2
- UL/cUL Listed
- UL Wet Listed
- IP67 for 4' Fixtures
- IP69 for 2' Fixtures
- NEMA 4X Housing
- UL 5VA (f1) Fiberglass Housing
- High Pressure Washdown Up To 1500 PSI
- DLC® Listed Standard

Mounting Options

- Surface Mount (Standard – Factory Shipped)
- Suspended Mounting
- Rigid Mounting

Cold Temperature option for cold storage environments

Configurable Power connections for fast installation



Marine Grade Stainless Steel latches and mounting brackets to withstand corrosion

NSF Certified Marine Grade Stainless Steel latches and mounting brackets to withstand corrosion

*Varies by fixture configuration

LED VAPORTIGHT

TRITONPRO™ LED SLIMLINE LUMEN SELECT VAPORTIGHT, GEN 1

VTSS1 SPECIFICATIONS

Fixture Sizes

- 4' Standard

Lumen Range / LPW

- 3,500 to 7,000 Lumens, up to 149 LPW.
- Each lumen package allows for field adjustment of lumen output

Factory Installed Features and Options

- 120-277v
- 80 CRI; Field Adjustable CCT from 3500K, 4000K, and 5000K Standard
- 6kV/3kA Surge Protection Standard
- Polycarbonate Frosted Lens Standard
- Battery Back Up Available

Field Installed Options

- Multiple Power Connection Options

Control Types Available

- Field Installed Sensor Available
- Remote Programming Sensors

Certifications / Listings*

- UL/cUL Listed
- IP66 Ingress Protection Rating
- NEMA4X
- IK10 Impact Rating
- DLC® Listed Standard

Mounting Options

- Surface Mounting (Standard Factory Shipped)
- Suspended Mounting (Standard Factory Shipped)

Robust polycarbonate enclosure in a light gray finish

Multiple Knockouts for flexibility in mounting

Multiple Power Connection Options; different whip lengths for less installation time

Stainless Steel latches and mounting brackets to withstand harsh environments

Impact resistant polycarbonate lens for rugged environments that delivers a wide 120° distribution

Easy access to internal CCT and Lumen adjustment

UV-C

ISON™ PUREMOTION LIGHT, GEN 1

IPML1 SPECIFICATIONS

Fixture Sizes

- 2' x 2' or 2' x 4'

Lumen Range / LPW

- 2,000 to 6,000 Lumens, up to 163 LPW

Factory Installed Features and Options

- 120-277v
- 80 CRI Standard; 3500K, 4000K, or 5000K Available
- Matte Acrylic Lens Standard
- 10 kA Additional Surge Protection

Certifications / Listings*

- Buy American Act Compliant
- UL/cUL Listed
- UL Listed for Damp Locations
- EPA Establishment #94844-WI-1

Mounting Options

- Recessed Mount
- Surface Mount
- Suspended Mount

Britex™ coating comes standard with antimicrobial properties to eliminate contaminants that come in contact with the unit

Various mounting options for any application: Surface, recessed, and suspended



Quiet fan increases airflow and air quality

*Varies by fixture configuration

UV-C

ISON™ PUREMOTION UV-C, GEN 1

INPUT SPECIFICATIONS

Fixture Sizes

- 2' x 2' or 2' x 4'

Factory Installed Features and Options

- 120-277v
- White, Black and Silver Fixture Colors
- Four Panel Options: Aluminum Panel, Smooth White Ceiling Tile, Fissured Pattern Print Ceiling Tile, and Custom Logo Print Ceiling Tile
- 10 kA Additional Surge Protection
- Antimicrobial Britex™ Coating Standard
- Quiet Axial Fans Draw the Air in so UVC LEDs can Sterilize it

Field Installed Options

- Panel Replacement Kit

Certifications / Listings*

- Buy American Act Compliant
- UL/cUL Listed
- UL Listed for Damp Locations
- EPA Establishment #9844-WI-1

Mounting Options

- Recessed Mount
- Surface Mount
- Suspended Mount

Britex™ coating comes standard with antimicrobial properties to eliminate contaminants that come in contact with the unit

Customize your fan with any custom digital print design



Axial fans draw air into the chamber and sterilize the air before returning it into the environment

UV Panel replacement kit for easy maintenance available

**Varies by fixture configuration*

UV-C

ISON™ PUREMOTION AIR, GEN 1

IPMA1 SPECIFICATIONS

Fixture Sizes

- 2' x 2' or 2' x 4'

Factory Installed Features and Options

- 120-277v
- White, Black and Silver Fixture Colors
- Four Panel Options: Aluminum Panel, Smooth White Ceiling Tile, Fissured Pattern Print Ceiling Tile, and Custom Logo Print Ceiling Tile
- 10 kA Additional Surge Protection
- Britex™ Coating Standard
- Fans to Increase Air Flow and Create Even Room Temperatures

Certifications / Listings*

- Buy American Act Compliant
- UL/cUL Listed
- UL Listed for Damp Locations
- EPA Establishment #9844-WI-1

Mounting Options

- Recessed Mount
- Surface Mount
- Suspended Mount
- Wall Mount

Britex™ coating comes standard with antimicrobial properties to eliminate contaminants that come in contact with the unit

White, black and silver fixture body finish to match room design



Quiet fan increases the spaces airflow and air quality

Customize your fan with any custom digital print design

*Varies by fixture configuration

LED RETROFIT LINEAR HIGH BAY

ISON™ LINEAR LED MODULE RETROFIT, GEN 2

LMAR2 SPECIFICATIONS

Fixture Sizes

- 4' or 8' Retrofit Lengths; 2 Widths Available per Length

Lumen Range / LPW

- 9,000 or 18,000 Lumens, up to 171 LPW

Factory Installed Features and Options

- 120-277v, 347v and 480v
- 80 CRI; 4000K Standard
- Two Light Distribution Options: No Lens or Frosted Acrylic Lens

Control Types Available

- Field Installed Control Options
- Onsite Network Programming
- Internet/Cloud Based Network Programming

Certifications / Listings*

- Buy American Act Compliant
- UL/cUL Listed
- DLC® Listed Standard

Retrofit light engine is designed to fit in existing linear fluorescent high or low bay fixture channels for ease of install

Frosted acrylic matte lens available for glare reduction



*Varies by fixture configuration

LED TROFFER

HARRIS LED TROFFER, GEN 2

LT HE2 SPECIFICATIONS

Fixture Sizes

- 1' x 4', 2' x 2', or 2' x 4'

Lumen Range / LPW

- 2,000 to 8,000 Lumens, up to 158 LPW

Factory Installed Features and Options

- 120-277v and 347v
- 80 CRI Standard; 3500K, 4000K, or 5000K Available
- Battery Back Up
- Different Dimming Capacity Drivers
- Dial Dimmer
- Britex™ Coating

Field Installed Options

- Seismic Cable

Control Types Available

- Factory Installed Controls and Sensors Available
- Manual Programming Sensors
- Remote Programming Sensors
- On Site Network Programming
- Internet/Cloud Based Network Programming

Certifications / Listings*

- Buy American Act Compliant
- UL/cUL Listed
- DLC® Listed Standard
- BABA Compliant

Mounting Options

- Recessed Mounting for T-Bar Grid Systems

Dial Dimmer available for field adjustment of power and lumen output option

Title 24 compliant seismic cable kit available that easily attaches to the fixture housing

Wide light distribution reduces wall and ceiling dark spaces

Britex™ coating available with antimicrobial properties to eliminate contaminants that come in contact with the unit

*Varies by fixture configuration

LED TROFFER

HARRIS LED SURFACE MOUNT TROFFER, GEN 3

LSME3 SPECIFICATIONS

Fixture Sizes

- 1' x 4', 2' x 2' or 2' x 4'

Lumen Range / LPW

- 2,000 to 8,000 Lumens, up to 165 LPW

Factory Installed Features and Options

- 120-277v and 347v
- 80 CRI Standard; 3500K, 4000K, or 5000K Available
- Battery Back Up
- Different Dimming Capacity Drivers
- Dial Dimmer

Control Types Available

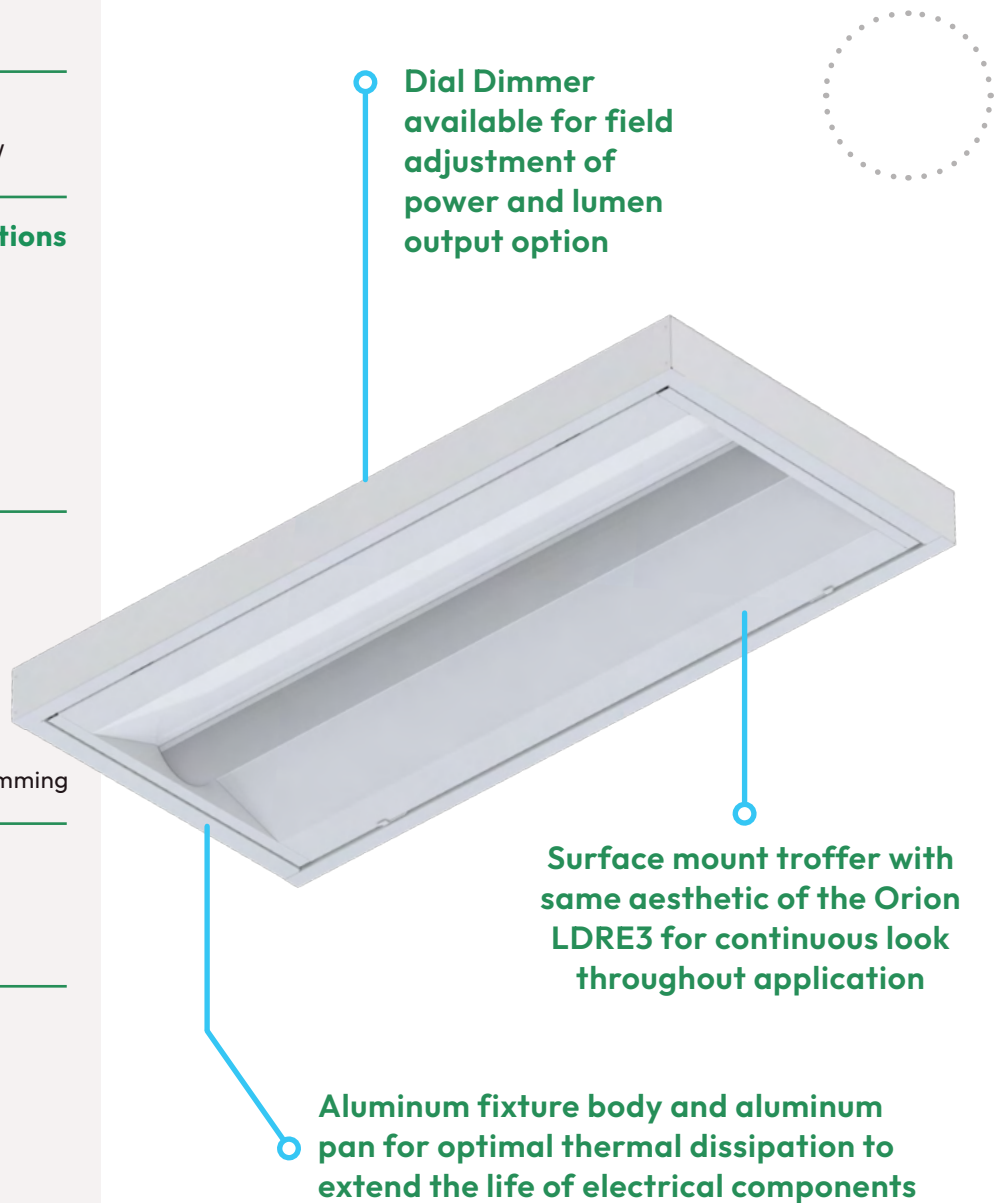
- Factory Installed Controls and Sensors Available
- Manual Programming Sensors
- Remote Programming Sensors
- On Site Network Programming
- Internet/Cloud Based Network Programming

Certifications / Listings*

- Buy American Act Compliant
- UL/cUL Listed

Mounting Options

- Surface Mounting



Dial Dimmer available for field adjustment of power and lumen output option

Surface mount troffer with same aesthetic of the Orion LDRE3 for continuous look throughout application

Aluminum fixture body and aluminum pan for optimal thermal dissipation to extend the life of electrical components

*Varies by fixture configuration

LED TROFFER

TRITONPRO™ LED TROFFER LUMEN SELECT, GEN 2

LTHES2 SPECIFICATIONS

Fixture Sizes

- 1' x 4', 2' x 2' or 2' x 4'

Lumen Range / LPW

- 2,750 to 5,500 Lumens, up to 140 LPW.
- Each fixture model allows for field adjustment of lumen output

Factory Installed Features and Options

- 120-277v
- 80 CRI; Field Adjustable CCT from 3500K, 4000K, and 5000K Standard
- Acrylic Frosted Lens Standard
- Battery Back Up

Field Installed Options

- Battery Back Up Kit

Certifications / Listings*

- UL/cUL Listed
- UL Listed Damp
- DLC® Listed Premium
- Certified for Insulated Plenums (Type IC)

Mounting Options

- Recessed Mount for T-Bar Grid Ceilings



*Varies by fixture configuration

LED TROFFER RETROFIT

HARRIS LED LDR® TROFFER RETROFIT, GEN 3

LDRE3 SPECIFICATIONS

Fixture Sizes

- 1' x 4', 2' x 2' or 2' x 4'

Lumen Range / LPW

- 2,000 to 8,000 Lumens, up to 165 LPW

Factory Installed Features and Options

- 120-277v and 347v
- 80 CRI Standard; 3500K, 4000K, or 5000K Available
- Battery Back Up
- Different Dimming Capacity Drivers
- Dial Dimmer
- Britex™ Coating

Field Installed Options

- Seismic Cable

Control Types Available

- Factory Installed Controls and Sensors Available
- Manual Programming Sensors
- Remote Programming Sensors
- On Site Network Programming
- Internet/Cloud Based Network Programming

Certifications / Listings*

- Buy American Act Compliant
- UL/cUL Listed
- DLC® Listed Standard
- BABA Compliant

Mounting Options

- Standard, Plenum and Lift Bracket Kits for Recessed T-Bar Grids

Installs in minutes with quick bracket system

Dial Dimmer available for field adjustment of power and lumen output option

Ultra-lightweight aluminum body for ease of single person install

Title 24 compliant seismic cable kit available that easily attaches to the fixture housing



*Varies by fixture configuration

LED TROFFER RETROFIT

ISON™ LED LDR® MODULAR HEALTHCARE

LDRMH1 SPECIFICATIONS

Fixture Sizes

- 2' x 2' or 2' x 4'

Lumen Range / LPW

- 2,000 to 8,000 Lumens

Factory Installed Features and Options

- 120-277v
- 80 CRI; 4000K Standard
- Matte Opaque Lens Standard
- Vyv Antimicrobial Protection and Britex™ Coating
- Constant Disinfecting of Bacteria and Viruses, Three Different Wavelengths for Different Levels of Disinfecting

Field Installed Options

- Seismic Cable

Certifications / Listings*

- Buy American Compliant
- UL/cUL Listed

Mounting Options

- Plenum, Lift, and Standard Brackets for T-Bar Grid Ceilings

Britex™ coating comes standard with antimicrobial properties to eliminate contaminants that come in contact with the unit

Installs in minutes with quick bracket system



Field interchangeable lighting module

Vyv Antimicrobial technology kills virus, bacteria and more

*Varies by fixture configuration

EMERGENCY / EXIT LIGHT

HARRIS LED EMERGENCY LIGHTING

ELWUB SPECIFICATIONS

Factory Installed Features and Options

- 120v or 277v
- Battery Back Up

Field Installed Options

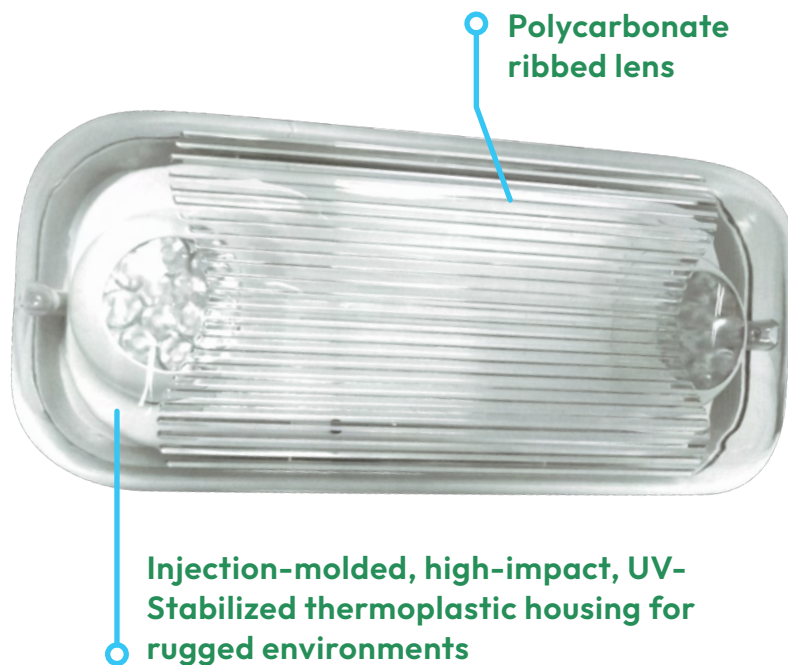
- Wireguard Kit

Certifications / Listings*

- UL/cUL Listed
- UL 924

Mounting Options

- Universal Mount Pattern Back Plate Knockout



ELRUB SPECIFICATIONS

Factory Installed Features and Options

- 120v or 277v
- Battery Back Up
- White or Black Fixture Color

Field Installed Options

- Wireguard Kit
- Clear Coverguard Kit

Certifications / Listings*

- UL/cUL Listed
- UL 924

Mounting Options

- Universal Mount Pattern Back Plate Knockout



*Varies by fixture configuration

EMERGENCY / EXIT LIGHT

HARRIS LED EXIT SIGN & EMERGENCY COMBINATION

ECRUB SPECIFICATIONS

Factory Installed Features and Options

- 120-277v
- White or Black Fixture
- Green or Red Letter Color
- Battery Back Up
- Single or Dual Face Application

Field Installed Options

- High Lumen
- Wireguard Kit

Certifications / Listings*

- UL/cUL Listed
- NEC

Mounting Options

- Universal Canopy Mount For Wall, Side, or Pendent Mounting

ECSUB SPECIFICATIONS

Factory Installed Features and Options

- 120 or 277v
- White or Black Fixture
- Red or Green Letter Color
- Battery Back Up
- Single or Dual Face Application

Field Installed Options

- Self Diagnostic
- Wireguard Kit

Certifications / Listings*

- UL/cUL Listed
- UL Damp Rated
- NEC

Mounting Options

- Universal Mount Pattern Back Plate Knockout



*Varies by fixture configuration

EMERGENCY / EXIT LIGHT

HARRIS LED EXIT SIGN & EMERGENCY COMBINATION

EXLUB SPECIFICATIONS

Factory Installed Features and Options

- 120 or 277v
- White or Black Fixture
- Red or Green Letter Color
- AC Only
- Battery Back Up
- Single or Dual Face Application

Field Installed Options

- Self Diagnostic
- Clear Cover Guard

Certifications / Listings*

- UL/cUL Listed
- UL Damp Rated
- NEC

Mounting Options

- Universal Mount Pattern Back Plate Knockout

EXFW1 SPECIFICATIONS

Factory Installed Features and Options

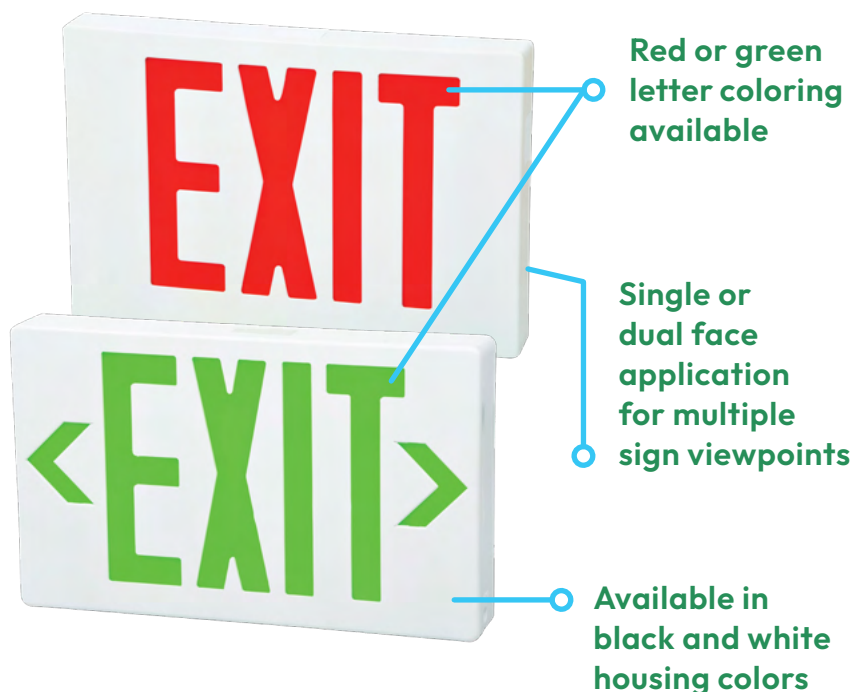
- 120 or 277v
- White Fixture Standard
- AC Only
- Battery Back Up
- Red or Green Letter Color

Certifications / Listings*

- UL/cUL Listed
- UL Wet Listed
- NEC

Mounting Options

- Wall Mounting



*Varies by fixture configuration

EMERGENCY / EXIT LIGHT

HARRIS LED EMERGENCY LIGHTING

ELSUB SPECIFICATIONS

Factory Installed Features and Options

- 120v or 277v
- Battery Back Up
- White or Black Fixture Color

Field Installed Options

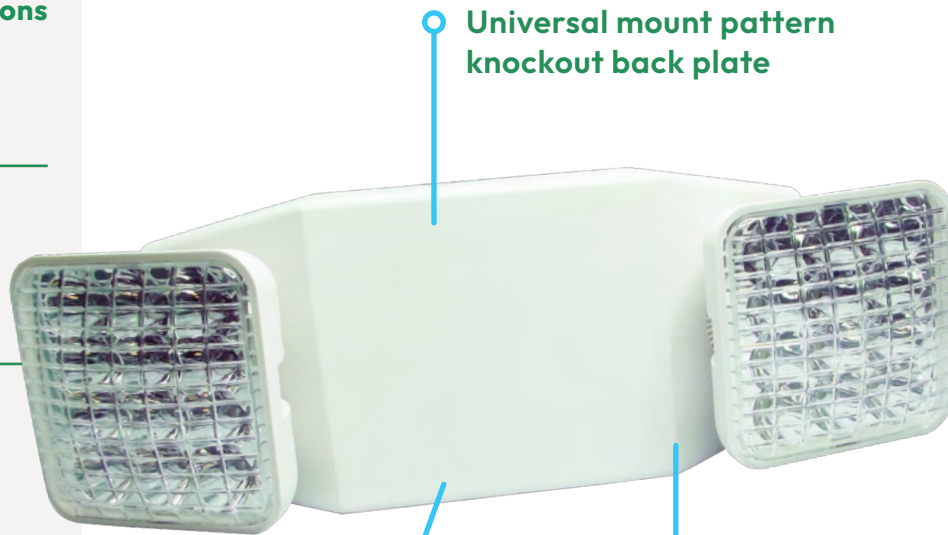
- Wireguard Kit
- Clear Coverguard Kit
- Self Diagnostic

Certifications / Listings*

- UL/cUL Listed
- UL Damp Rated
- UL 924
- NEC

Mounting Options

- Universal Mount Pattern Back Plate Knockout



Universal mount pattern
knockout back plate

Available in black and
white housing colors

Injection-molded, high-
impact, UV-Stabilized
thermoplastic housing for
rugged environments

*Varies by fixture configuration



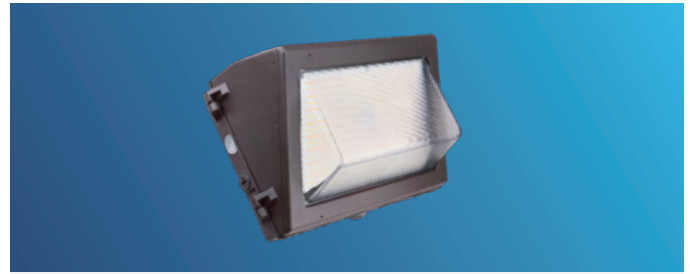
Exterior LED Lighting Solutions



AREA LIGHTS

PG 49

Ideal for large, open outdoor areas that require wide coverage. Several light distribution types are available to ensure proper distribution of light.



WALLPACKS

PG 52

Mounted on vertical surfaces, such as building exteriors or in parking garage structures, wallpack LED fixtures increase safety and security of pedestrians.



CANOPY LIGHTS

PG 54

Surface-mounted fixture for semi-enclosed outdoor areas.



FLOOD LIGHTS

PG 55

Used to increase visibility of building signage and areas that need directional uplighting.

LED AREA LIGHT

ISON™ LED AREA LIGHT HIGH PERFORMANCE, GEN 1

IAHP1 SPECIFICATIONS

Fixture Sizes

- 3 Fixture Sizes Available

Lumen Range / LPW

- 13,000 to 63,000 Lumen, up to 172 LPW

Factory Installed Features and Options

- 3 Light Distribution Types
- 10kV Surge Protection Standard
- 120-277v or 277-480v
- 3 Fixture Colors Available
- 80 CRI Standard; 3000K, 4000K, or 5000K
- Factory-Installed, Optional 7-pin Photocell Receptacle for Field Installation of Photocell

Field Installed Options

- Light Shield Options
- Control and Sensor Options
- Photocell 120-277v, 347v, and 480v

Control Types Available

- IP66 Rated Bluetooth Remote Programmable
- IP65 IoT or Connected Lighting Sensor

Certifications / Listings*

- Dark Sky Approved
- cULus Certified
- DLC® Listed Premium
- UL Wet Rated
- IK10 Rated
- Meets Title 24
- IP66
- Compliance
- IP67

Mounting Options

- Yoke
- Slip-fitter
- Trunnion
- Adjustable
- Adjustable Arm
- Wall Mount
- Universal Pole Mount
- Slide & Lock Mount

Precision engineered lens made of optical-grade polycarbonate for maximum light intensity and high efficacy

Toolless access to electrical components for field maintenance and installation

Anti-corrosion Stainless Steel Hardware



Type III, IV, and Type V light distribution



TYPE III

Perimeter parking areas, parking lots, and roadways



TYPE IV

Perimeter parking areas, and parking lots



TYPE V

Intersections, parking lots, and center roadways

*Varies by fixture configuration

LED AREA LIGHT

HARRIS AREA LIGHT LUMEN SELECT, GEN 1

ALL P1 SPECIFICATIONS

Fixture Sizes

- 2 Fixture Sizes Available



Lumen Range / LPW

- 12,000 to 42,000 Lumen, up to 158 LPW.
- Each lumen package allows for field adjustment of lumen output



Factory Installed Features and Options

- 4 Light Distribution Types
- 6kA/10kV Surge Protection Standard
- 120-277v or 277-480v
- Bronze Color Standard
- 80 CRI Standard; 3000K, 4000K or 5000K
- Field Adjustable CCT
- Factory-Installed, 3-pin Photocell Receptacle with Shorting Cap for Field Installation of Optional Photocell Standard

Field Installed Options

- Light Shield Options Available
- Control and Sensor Options

Control Types Available



- Photocell 120-277v, 347v, and 480v
- Microwave Sensor with Remote Control
- PIR Sensor with Remote Control

Certifications / Listings*

- Dark Sky Compliant
- cULus Certified
- DLC® Listed Premium
- UL Wet Rated
- IK08 Rated
- Meets Title 24
- IP65
- Compliance

Mounting Options

- Trunnion
- Slip-fitter
- Fixed Universal Pole Mount
- Adjustable Arm Universal Pole Mount
- Direct Pole Mount
- Adjustable Wall Mount

Die-cast aluminum housing with powder coat finish for harsh outdoor environments

Two fixture knockouts for easy access to adjust wattage, CCT, and install sensors

Pre-wired sensor receptacle allows for easy screw-in installation. No in-field sensor wiring required.

Anti-corrosion stainless steel hardware

Type II, III, IV, and V light distribution



TYPE II

Wide walkways, ramps, and entrance roadways



TYPE III

Perimeter parking areas, parking lots, and roadways



TYPE IV

Perimeter parking areas, and parking lots



TYPE V

Intersections, parking lots, and center roadways

*Varies by fixture configuration

LED AREA LIGHT

HARRIS LED AREA & SITE LIGHT, GEN 3

ALL LED3 SPECIFICATIONS

Fixture Sizes

- 2 Fixture Sizes Available

Lumen Range / LPW

- 10,000 to 38,000 Lumen, up to 142 LPW

Factory Installed Features and Options

- 3 Light Distribution Types
- 6kA/10kV Surge Protection Standard
- 120-277v, 347v, and 480v
- Three Fixture Colors Available
- 80 CRI Standard; 4000K or 5000K
- 3-Pin Photocell or 7-Pin Receptacle

Control Types Available

- Photocell 120-277v, 347v and 480v
- Manual Programming Sensor

Certifications / Listings*

- UL Standard
- UL Wet Rated
- IP65

Mounting Options

- Square Pole Mount
- U Bracket
- Slipfitter Mount

Die-cast aluminum housing with powder coat finish for harsh outdoor environments

Available in bronze, black and white fixture colors

Uniform light distribution in multiple light distribution types to put light where needed



*Varies by fixture configuration

LED WALLPACK

HARRIS LUMEN SELECT WALLPACK SEMI-CUTOFF, GEN 1

LSWS1 SPECIFICATIONS

Fixture Sizes

- 3 Fixture Sizes Available



Lumen Range / LPW

- 3,000 to 18,000 Lumen, up to 161 LPW.
- Each lumen package allows for field adjustment of lumen output



Factory Installed Features and Options

- 3 Fixture Colors Available
- 6kA/10kV Surge Protection Standard
- 120-277v
- 80 CRI Standard; 3000K, 4000K or 5000K Field Adjustable CCT

Field Installed Options

- Light Shield Options
- Sensor Options
- Wire Guard Available

Control Types Available



- Integrated Photocell Comes Standard
- Microwave Sensor with Remote Control
- PIR Sensor with Remote Control

Certifications / Listings*

- DLC® Listed Premium
- cULus Certified
- UL Wet Rated

Mounting Options

- Back-plated design with template to mount directly over a standard recessed junction box for surface mounting

Back-plated design with template to mount directly over a standard recessed junction box



Heat and impact resistant borosilicate glass lens

Integrated Photocell comes standard

Die-cast aluminum housing with powder coat finish for harsh outdoor environments

*Varies by fixture configuration

LED WALLPACK

HARRIS LUMEN SELECT WALLPACK FULL CUTOFF, GEN 1

LSWF1 SPECIFICATIONS

Fixture Sizes

- 2 Fixture Sizes Available



Lumen Range / LPW

- 3,000 to 18,000 Lumen, up to 151 LPW.
- Each lumen package allows for field adjustment of lumen output



Factory Installed Features and Options

- 3 Fixture Colors Available
- 10kV Surge Protection Standard
- 120-277v
- 80 CRI Standard; 3000K, 4000K or 5000K Field Adjustable CCT
- Battery Backup Available

Field Installed Options

- Sensor Options Available

Control Types Available



- Photocell Comes Standard
- Microwave Sensor with Remote Control
- PIR Sensor with Remote Control

Certifications / Listings*

- Dark Sky Compliant
- cULus Certified
- DLC® Listed Premium
- UL Wet Rated

Mounting Options

- Back-plated design with template to mount directly over a standard recessed junction box for surface mounting



Back-plated design with template to mount directly over a standard recessed junction box

UV-Resistant Polycarbonate Lens

Die-cast aluminum housing with powder coat finish for harsh outdoor environments

*Varies by fixture configuration

LED CANOPY

HARRIS LUMEN SELECT CANOPY SQUARE, GEN 1

LSCS1 SPECIFICATIONS

Fixture Sizes

- 2 Fixture Sizes Available



Lumen Range / LPW

- 4,000 to 12,000 Lumen, up to 150 LPW.
- Each lumen package allows for field adjustment of lumen output



Factory Installed Features and Options

- 3 Fixture Colors Available
- 6kA/10kV Surge Protection Standard
- 120-347v
- 70 CRI Standard; 3000K, 4000K or 5000K Field Adjustable CCT

Control Types Available



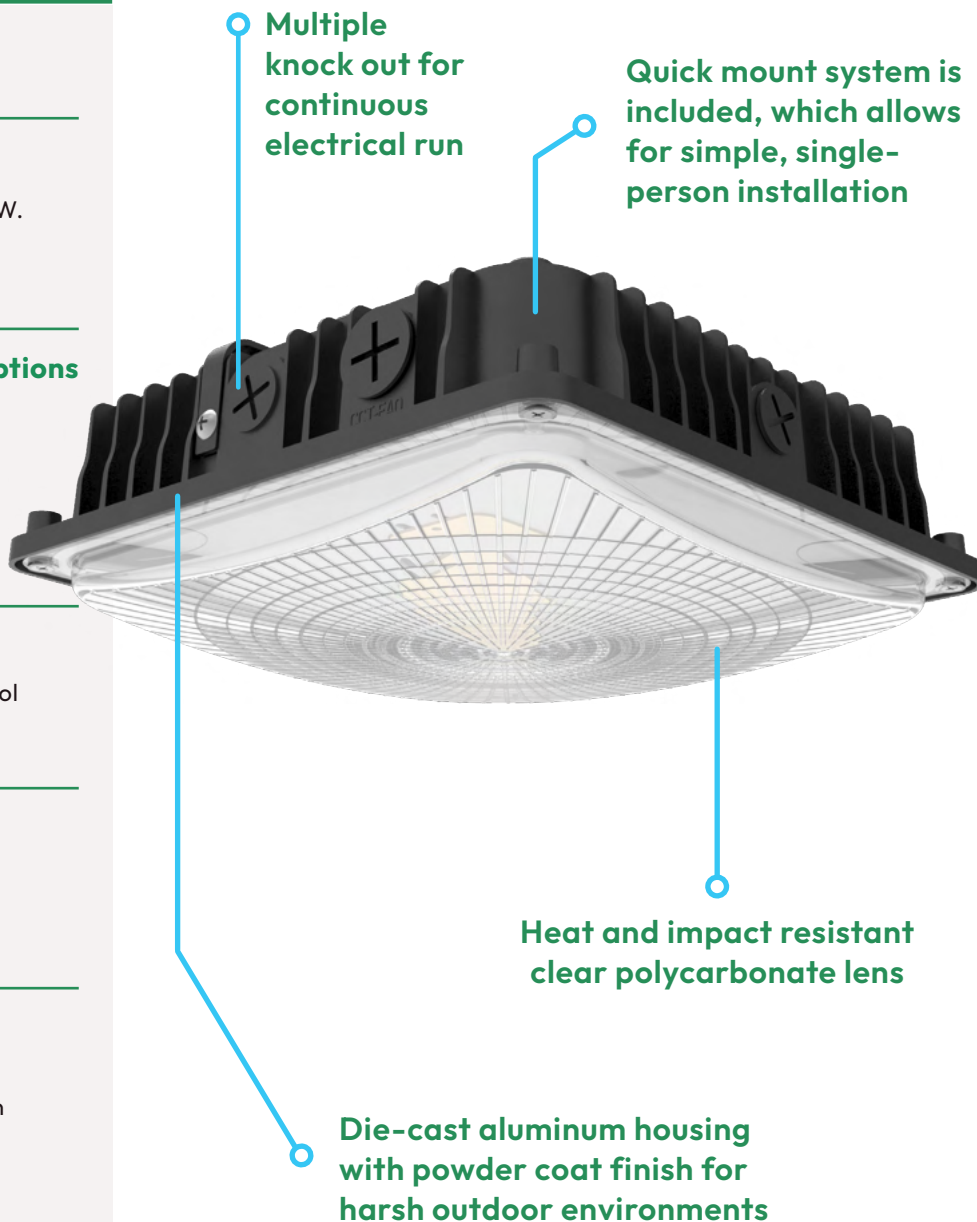
- Microwave Sensor with Remote Control
- Photocell Option

Certifications / Listings*

- DLC® Listed Premium
- cULus Certified
- UL Wet Rated

Mounting Options

- Quick mount system is included, which allows for simple, single-person installation



*Varies by fixture configuration

LED FLOOD LIGHT

HARRIS LED ARCHITECTURAL FLOOD LIGHT, GEN 3

FLGA3 SPECIFICATIONS

Fixture Sizes

- 4 Fixture Sizes Available

Lumen Range / LPW

- 2,000 to 26,000 Lumen, up to 137 LPW

Factory Installed Features and Options

- Photocell Available
- 6kA/10kV Surge Protection Standard
- 120v-277v or 347v-480v
- 70 CRI Standard; 4000K or 5000K
- Bronze Color Standard

Control Types Available



- Photocell Option

Certifications / Listings*

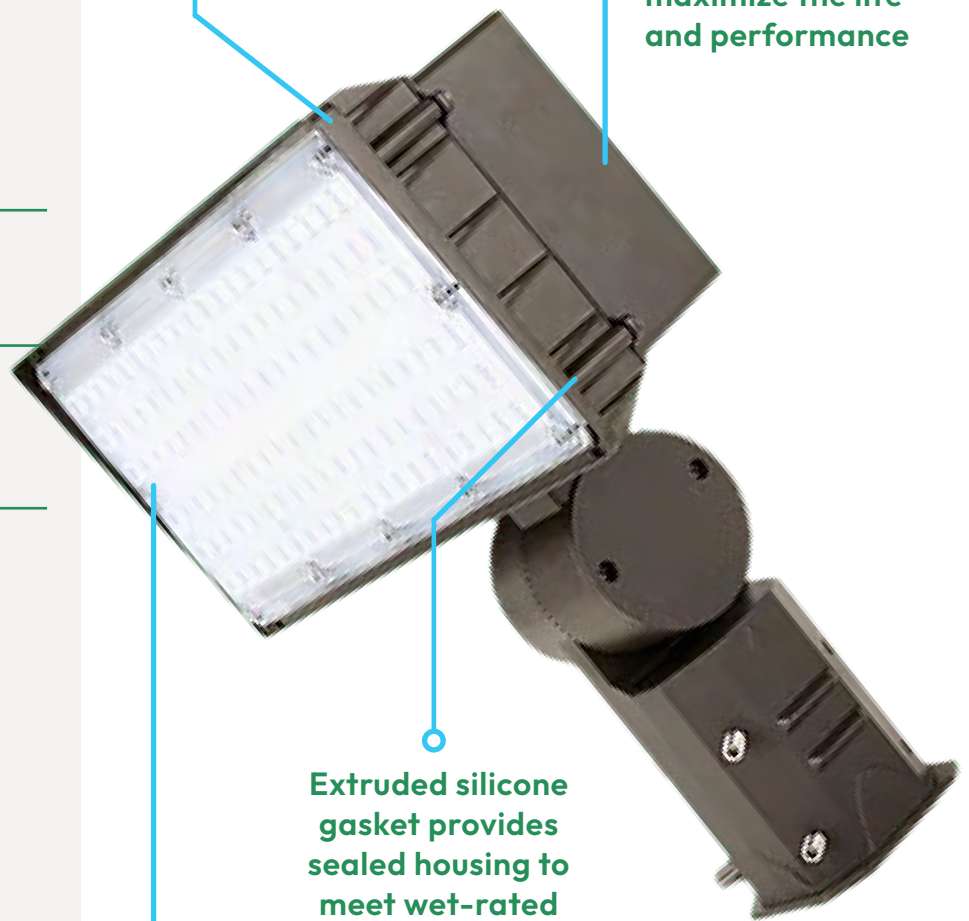
- cULus Certified
- UL Wet Rated

Mounting Options

- Trunnion
- Slip Fitter
- Knuckle

Die-cast aluminum housing with powder coat finish for harsh outdoor environments

Housing is designed to isolate LED from driver in order to maximize the life and performance



Extruded silicone gasket provides sealed housing to meet wet-rated standards

High-performance acrylic optics offer NEMA Type Optics 7Hx6V

*Varies by fixture configuration

Lighting Controls

Integrate fixtures with intelligent lighting controls to increase effectiveness and energy savings.

BENEFITS OF LED EXTERIOR LIGHTING CONTROLS



Increased Energy Savings

Controls allow for programmable time settings or motion sensors that enable users to light a space only when it's occupied, decreasing energy costs.



Better Security and Improved Safety

Lights triggered by security system-connected controls help deter crime and alert property managers to activity where occupancy isn't expected or allowed.



Lighting Pollution Mitigation

LED fixtures combined with controls allow for less light pollution. Orion offers a variety of Dark Sky-approved products that eliminate the threat to local nighttime environments.

LED EXTERIOR LIGHTING CONTROL TECHNOLOGY TYPES



PHOTOCELL SENSOR

Photocell sensors automatically adjust to surrounding ambient light levels triggering exterior lights to turn on and off - regularly activating at sunset and dawn.



MICROWAVE SENSOR

Consistently sending out high-frequency radio waves at 360 degrees, microwave sensors identify changes in return waves to detect movement and are particularly effective for large coverage areas. Users can program microwave sensors in the field to their preferred time a light should stay on when triggered.



PASSIVE INFRARED (PIR) SENSOR

A PIR sensors measure infrared light radiating from objects in its field of view. It is commonly used to identify the presence of people for increased security.

Lighting Control Solutions

Basic sensors and controls can be integrated throughout a facility with mid-range and advanced control solutions for mixed use environments.

LIGHTING CONTROL FEATURES						
		TIER I (MANUAL SETTINGS)	TIER II (REMOTE SETTINGS)	TIER III (WIRELESS CONTROLS WITH ZONES)	TIER IV (ON-SITE NETWORK CONTROLS)	TIER V (CLOUD BASED IoT CONTROLS)
BASIC	INTERCHANGEABLE LENSES	✓	✓			
	MANUAL PROGRAMMING CAPABLE	✓				
	ON/OFF SETTINGS	✓				
MID-RANGE	DIMMABLE (0-10V)	✓	✓	✓	✓	✓
	DAYLIGHT HARVESTING	✓	✓	✓	✓	✓
	HANDHELD REMOTE MANAGEMENT		✓			
ADVANCED	PHONE APP BASED COMMISSIONING		✓	✓		
	WIRELESS ZONES/ GROUPS			✓	✓	✓
	SCHEDULING			✓	✓	✓
	WIRELESS WALL SWITCH			✓	✓	✓
	COMPUTER ACCESS DASHBOARD DATA				✓	✓
	ENERGY MANAGEMENT DATA				✓	✓
	TEMPERATURE SENSING				✓	✓

Orion offers a wide variety of control solutions for existing and new lighting control systems including but not limited to:

 Enlighted

 PHILIPS

 legrand®
WATTSTOPPER®

 Keilton®
LITE1000

 LEVITON®

 LUTRON®

Energy-As-A-Service

Orion's Energy-As-A-Service finance solution provides customers with access to **a suite of premier lenders at preferred rates** to finance their facility's lighting upgrades **without the need to draw from cash reserves**.

Don't wait for capital project approval to capture energy savings and optimize your business.



ACCELERATE ROI

Capture immediate energy reduction savings without capital investment.



NO CASH DOWN

Keep your cash flow flexibility to invest in revenue-generation business operations.



PREMIER LENDERS

Select from a suite of Orion-approved lenders to accelerate underwriting and lock in industry-leading rates.



COMPLETE FINANCING

Incorporate every aspect of the project such as facility audits, shipping, and installation with no minimums or maximums.



CUSTOMIZED TERMS

Finance all or a portion of the project. Select from a variety of term lengths that best suits your needs.

Product Warranty Options

We back our products with excellent warranty coverage to provide you peace-of-mind in case of unexpected product breakdowns.



STANDARD 5-YEAR LIMITED WARRANTY

Standard warranty coverage includes mechanical and electrical component failure during the term.

- + Five-year product warranty coverage comes standard on all LED fixtures.



EXTENDED 10-YEAR WARRANTY

Orion's 10-year Extended Warranty provides additional coverage for the replacement or repair of LED products including critical electronic components such as sensors, drivers, hardwired cords, and LED boards.

- + Is in addition to, and does not replace, standard warranty coverage.
- + Available at additional cost.
- + All Orion fixtures are eligible for the additional 10-year coverage.
- + Extended warranty is backed by a highly rated insurance company.

Orion Maintenance Services

Let our certified lighting technicians service and maintain lighting systems and components so you can focus on your business.

- Nationwide team of skilled and certified lighting and electrical professionals located throughout the US
- Currently providing preventative and reactive lighting and electrical services at over 8000 customer locations throughout the US and Caribbean

CUSTOMER SATISFACTION IS ALWAYS OUR TOP PRIORITY:



Contract pricing to keep costs down.



A comprehensive team of licensed electricians / technicians at your disposal.



Fully equipped trucks to eliminate return trips.



Regular reporting and status updates on each call service call.

OUR ALWAYS-AVAILABLE EXPERT TECHNICIANS:



Are nationwide to quickly respond to any location.



Respond to warranty claims and time-critical service calls.

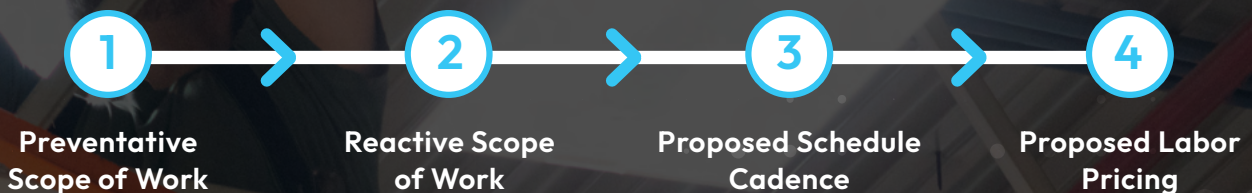


Communicate directly with end-user customers to save you time and money.



Are always on-call to be on site within 48 hours - or sooner.

Maintenance Process





orion™

orionlighting.com | 1.800.660.9340

© 2023 Orion Energy Systems, Inc. All rights reserved. The Orion logo is a trademark/service mark of Orion Energy Systems, Inc. All other trademarks are property of their respective owners.