

The background of the cover is a photograph of a warehouse aisle with high ceilings and metal trusses. The aisle is filled with tall stacks of cardboard boxes on pallets, supported by metal shelving units. The lighting is dim, with some bright spots from overhead lights. Overlaid on the image are several decorative elements: a large blue arc on the left side, a large green arc on the right side, and a dotted white line that forms a path through the aisle. The Orion logo is centered in the upper half, and the title 'LED Product Catalog' is centered below it.

orion™

# LED Product Catalog

# Table of Contents

<b>Our Mission . . . . .</b>	<b>3</b>
<b>LED Lighting Product Categories . . . . .</b>	<b>4</b>
<b>DesignLights Consortium® (DLC®) . . . . .</b>	<b>5</b>
<b>Lighting Controls Solutions. . . . .</b>	<b>6</b>
<b>Certifications Overview . . . . .</b>	<b>7-8</b>
<b>Interior LED Lighting Solutions . . . . .</b>	<b>9-39</b>
<b>Exterior LED Lighting Solutions . . . . .</b>	<b>40-46</b>
<b>Lighting Controls . . . . .</b>	<b>47</b>
<b>Fluorescent Lighting Bans . . . . .</b>	<b>48</b>

# Our Mission

We help our customers achieve their sustainability, energy savings, and carbon footprint reduction goals through innovative technology and exceptional service.

## Core Strengths

We set ourselves apart with:



**Industry-Leading Products**



**Broad and Diversified Product Portfolio**



**BAA/BABA Compliant Product Options**



**U.S. Based Customer Support and Engineering Resources**



**Quick Quote Turnaround Time**



**Customer-first Approach**



**Socially & Environmentally Responsible Operations**

## Reduced Carbon Footprints and Returns on Investment

Orion believes in a sustainable future and works to reduce our own carbon footprint while helping customers reduce theirs. Not only does this help the environment, it also achieves cost savings in short order, with efficient LED lights paying for themselves in just a few years.

# Contact Us

Ready to start saving on energy costs with an LED retrofit? Or maybe you're looking for the best LED lighting for a new construction project?

[Let's connect](#) and discuss how we can help your facility shine.

# LED Lighting Product Categories

Unlock your ideal solution with our range of product options. Tailor your choice to your needs and enjoy exceptional quality and performance at every level.

## ISON®

The highest standard of performance and quality to provide best-in-class return on investment and lowest pay-back period.

### LPW

Highest In Industry

### CONTROLS

Capable of Advanced Controls

### L70

100,000+ Hours

### FEATURES

Best-in-Class

### PRICE

Premium

### CERTIFICATIONS

Best-in-Class

### OPERATING TEMPS

Best-in-Class per Product Application

## HARRIS

Above-average performance with a complete array of features and options to meet most desired industry standards.

### LPW

Exceeds Industry Standards

### CONTROLS

Capable of Advanced Controls

### L70

100,000 Hours

### FEATURES

Best-in-Class

### PRICE

Competitive

### CERTIFICATIONS

Best-in-Class

### OPERATING TEMPS

45°-55°C Depending on Application

## TRITONPRO™

Contractor-focused products that provide maximum in-field flexibility while meeting industry standards.

### LPW

Meets or Exceeds  
DLC(R) Standards

### CONTROLS

Capable of Standard Controls with  
Limited Advanced Control Options

### L70

50,000+ Hours

### FEATURES

Set Options with In-field Adjustability

### PRICE

Low Cost

### CERTIFICATIONS

Meets Industry Standards

### OPERATING TEMPS

40°-55°C Depending on Application

# DesignLights Consortium® (DLC®)

The DLC® Qualified Product Listing has high-quality, energy-efficient lighting products that qualify for rebates in utility and energy efficiency programs.



## DLC® LISTED STANDARD

Lighting products that meet the basic energy efficiency and performance requirements set by the DLC®. They are designed to provide significant energy savings compared to traditional lighting solutions. DLC® Listed Standard products meet certain criteria for efficacy, color quality, and other performance factors.



## DLC® LISTED PREMIUM

Lighting products go beyond the basic requirements established by the DLC®. They are designed to achieve even higher energy savings and offer superior light quality and controllability. DLC® Listed Premium products demonstrate a significant improvement in terms of energy efficiency, color accuracy, and other performance metrics compared to DLC® Listed Standard products. They represent the top tier of energy-efficient lighting solutions.

## Rebate Eligibility

Energy-efficient lights qualify for money-saving incentives offered by utility companies and governments. These incentives aim to encourage the use of efficient lighting solutions.

To qualify, choose any Orion DLC®-listed lighting products to help offset the cost of upgrading to energy-efficient lighting. It's a straightforward way to save money while contributing to a more sustainable future.

Need Help Navigating the Rebate Process?  
Contact our customer service team at **920-482-0520**.

# Lighting Control Solutions

Basic sensors and controls can be integrated throughout a facility with mid-range and advanced control solutions for mixed use environments.

LIGHTING CONTROL FEATURES						
		TIER I (MANUAL SETTINGS)	TIER II (REMOTE SETTINGS)	TIER III (WIRELESS CONTROLS WITH ZONES)	TIER IV (ON-SITE NETWORK CONTROLS)	TIER V (CLOUD BASED IoT CONTROLS)
BASIC	INTERCHANGEABLE LENSES	✓	✓			
	MANUAL PROGRAMMING CAPABLE	✓				
	ON/OFF SETTINGS	✓				
MID-RANGE	DIMMABLE (0-10V)	✓	✓	✓	✓	✓
	DAYLIGHT HARVESTING	✓	✓	✓	✓	✓
	HANDHELD REMOTE MANAGEMENT		✓			
ADVANCED	PHONE APP BASED COMMISSIONING		✓	✓		
	WIRELESS ZONES/ GROUPS			✓	✓	✓
	SCHEDULING			✓	✓	✓
	WIRELESS WALL SWITCH			✓	✓	✓
	COMPUTER ACCESS DASHBOARD DATA				✓	✓
	ENERGY MANAGEMENT DATA				✓	✓
	TEMPERATURE SENSING				✓	✓

Orion offers a wide variety of control solutions for existing and new lighting control systems including but not limited to:



# Certifications Overview



## NSF

NSF (National Sanitation Foundation) evaluated and tested fixtures per NSF/ANSI 2 (Food Equipment Regulations) for use in non-food zone and splash zone locations. Non-food zones are areas where contact of food with the fixture is unexpected. Splash zones are areas where spills and splashes from liquids used in the processing or cleaning procedure may get on the surface of the fixtures.



## TAA

The United States Trade Agreements Act (TAA) states that in order to be considered TAA-compliant, a fixture must have a minimum of 50% of its total manufacturing cost coming from either the United States or a country designated under the TAA. The product has undergone substantial transformation in the US or a TAA-designated country.



## BABA

Build America, Buy America (BABA) establishes a domestic preference for Federal financial assistance obligated for infrastructure projects. The BABA preference applies to three separate product categories including manufacturing that include LED lighting products.



## BAA

The Buy American Act (BAA) is a federal law that pertains to goods used in the United States. It establishes a minimum requirement for the percentage of materials or parts sourced from the US in manufactured items. This product is manufactured in Wisconsin and is a COTS product.



## DLC® PREMIUM

The fixture is DLC® Premium compliant. It has been evaluated and certified based on light quality, performance, lifespan, and enhanced energy efficiency. Within this classification, “Premium” signifies a higher level of performance compared to the “Standard” classification. In both the United States and Canada, the majority of utility companies mandate that fixtures must hold a DLC® rating to be eligible for rebates.



## DLC® STANDARD

The fixture is DLC® Standard compliant. It has been evaluated and certified based on light quality, performance, lifespan, and enhanced energy efficiency. In both the United States and Canada, the majority of utility companies mandate that fixtures must hold a DLC® rating to be eligible for rebates.



## UL CERTIFIED

The fixture has been tested and met defined requirements by UL (Underwriter Laboratories) standards for fire safety and electrical safety. For use both in U.S. and Canada.

# Certifications Overview



## UL DAMP RATED

The fixture is tested and approved by UL for areas that are regularly exposed to moisture and condensation. It does not cover direct water contact. Typically used in manufacturing areas exposed to humidity, moisture and condensation. They can also be used outdoors in areas that are protected from direct rain or snow exposure.



## UL WET RATED

The fixture is tested and approved by UL to be installed anywhere that liquids will come in direct contact. Typically used for outdoor lighting.

## IP65

### IP65

This fixture is IP-rated (Ingress Protection code) for protection against dust and from water jets from any direction. IP code are defined by IEC 60529 International Standard.

## IP66

### IP66

This fixture is IP-rated for protection against dust and water resistant against powerful jets. IP codes are defined by IEC 60529 International Standard.

## IP67

### IP67

This fixture is IP-rated for protection against dust and protected from immersion (up to 1m) for a limited time. IP code are defined by IEC 60529 International Standard.



### IK08

This fixture has an IK08 rating, signifying its ability to withstand impact up to 5 joules or the equivalent of a 1.7kg (3.7 lb) mass dropped from a height of 300mm (11.8 in) onto the surface. These IK ratings adhere to the specifications outlined in the IEC 62262 International Standard.



### IK10

This fixture holds an IK10 rating, indicating its capacity to provide Enclosure Protection against impact of up to 20 joules, equivalent to the impact of a 5kg (11 lb) mass dropped from a height of 400mm (15.7 in) onto the surface. These IK ratings are established according to the IEC 62262 International Standard.

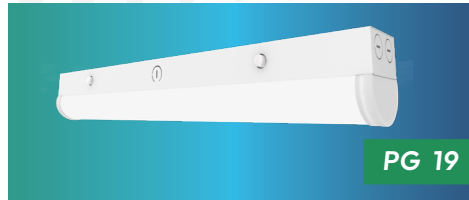


# Interior LED Lighting Solutions



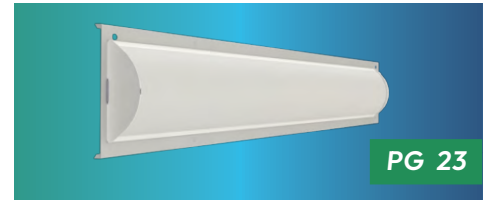
## HIGH BAY / LOW BAY

Ideal fixtures for warehouse, manufacturing, and inventory management facilities with varying ceiling heights up to 40'.



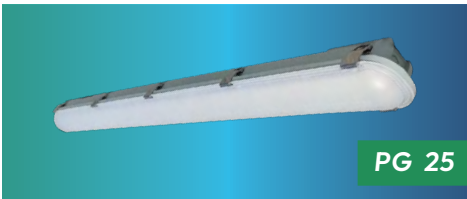
## LINEAR

Commonly used in commercial and retail settings. These fixtures are easy to install and can be grouped or continuously run to create lighting uniformity.



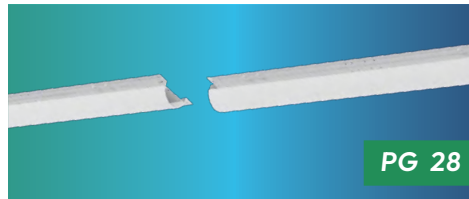
## LINEAR RETROFIT

Reduce energy costs by upgrading from outdated fluorescents to LEDs with our easy-to-install LED retrofit kits. Kits offer longer fixture life and lower labor expenses.



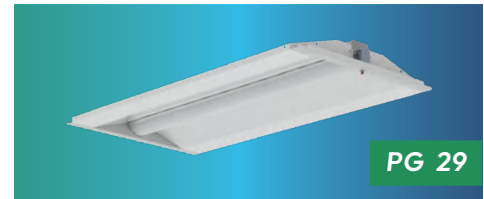
## ENCLOSED HIGH BAYS / VAPORTIGHTS

Ideal for tough conditions in manufacturing, food prep, and processing facilities, with durability that ensures reliable performance.



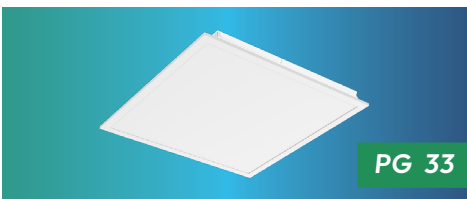
## RETROFIT LINEAR HIGH BAY

Retrofits existing T12/T8 linear high bay fluorescent fixtures to LED, in high ceiling retail settings and inventory management facilities with varying ceiling heights up to 40'.



## TROFFER

Available in various size fixtures, troffer fixtures are utilized for drop-in ceilings and surface-mount applications where even light distribution is needed. Typically used in commercial and office settings.



## FLAT PANEL

Available in various fixture sizes, flat panels can be used anywhere a T-Bar Lay-In grid can be found where even light distribution is needed. Typically used in commercial, office and retail settings.



## TROFFER RETROFIT

Designed for retrofitting existing T12/T8 fluorescent troffers with an easy retrofit bracket system, our troffer retrofit allows for quick installation in under two minutes.



## EMERGENCY / EXIT

Used to show patrons and employees where to exit in case of an emergency to comply with local codes and ordinances.

# LED HIGH BAY

## HARRIS LED HIGH BAY STAR LINE, GEN 2

### HHSL2 SPECIFICATIONS

#### Fixture Sizes

- 2' or 4'

#### Lumen Range / LPW

- 9,000 to 72,000 Lumens, up to 185 LPW

#### Factory Installed Features and Options

- 120v-277v, 347v, and 480v
- 80 CRI; 3500K, 4000K, and 5000K
- Four Light Distribution Types: No Lens, Acrylic General Distribution, Acrylic Aisle Distribution, and Acrylic Medium Distribution
- Multiple Power Connection Options
- 6kV/3kA Surge Protection Standard
- 20kV/10kA Additional Surge Protection Optional
- Orange Painted End Cap for Emergency Fixture Identifier
- High Ambient Operating Temp. Available to 65°C
- Battery Backup Available

#### Field Installed Options

- Battery Backup Kit
- Wireguard Kit

#### Control Types Available

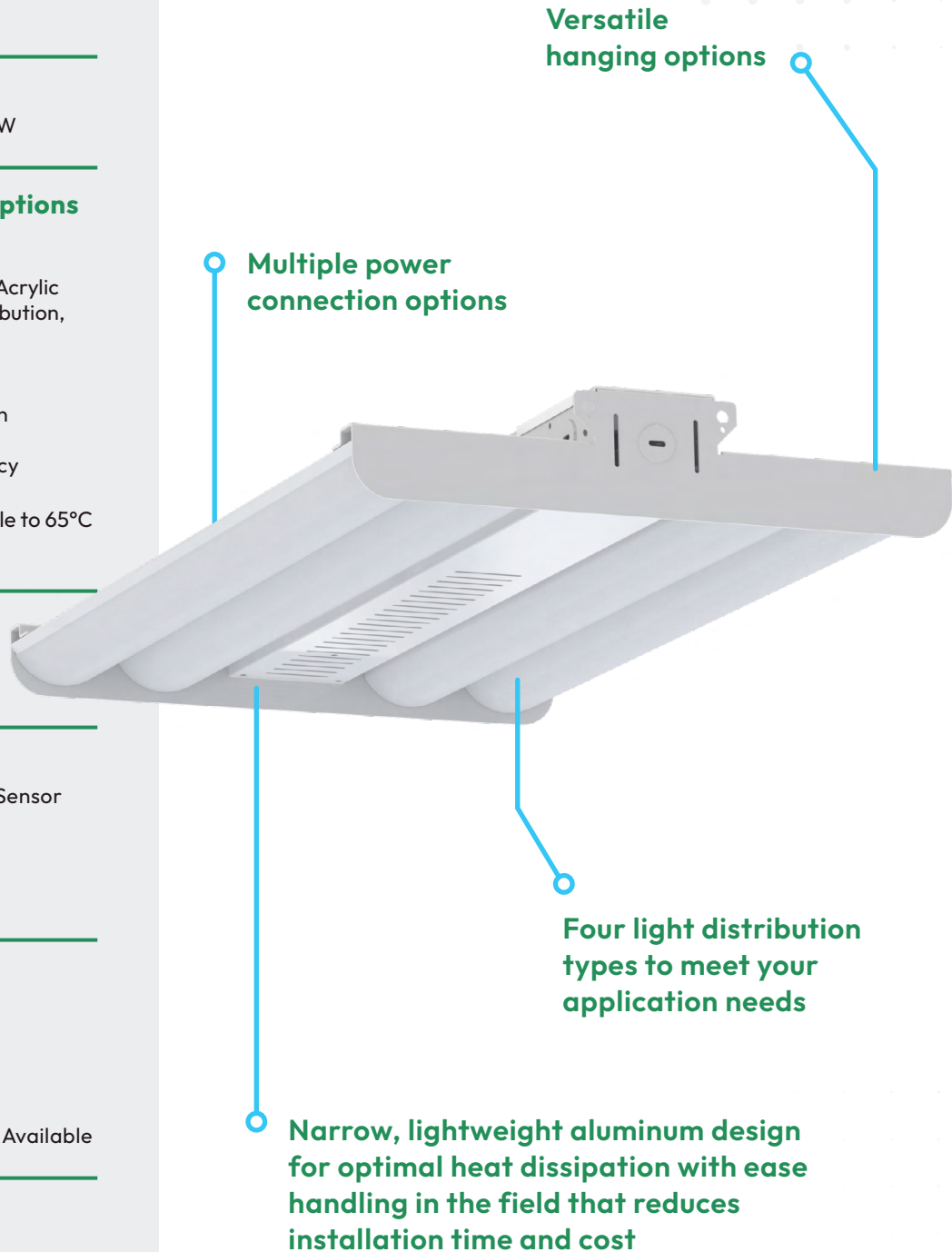
- Field or Factory Installed Control and Sensor Options
- Manual Programming Sensors
- Remote Programming Sensors
- Remote Programming with Zoning

#### Certifications / Listings\*

- Buy American Act Compliant
- UL/cUL Listed
- UL Damp Rated
- DLC® Listed Standard and Premium
- BABA Compliant
- CA Title 20 Compliant Battery Backup Available

#### Mounting Options

- Suspended Mounting
- Surface Mounting
- Rigid Mounting



Versatile hanging options

Multiple power connection options

Four light distribution types to meet your application needs

Narrow, lightweight aluminum design for optimal heat dissipation with ease handling in the field that reduces installation time and cost

\*Varies by fixture configuration

# LED HIGH BAY

## HARRIS LED HIGH BAY STAR LINE HIGH EFFICACY, GEN 2

### HHSL2 HE SPECIFICATIONS

#### Fixture Sizes

- 2' or 4'

#### Lumen Range / LPW

- 9,000 to 45,000 Lumens, up to 198 LPW

#### Factory Installed Features and Options

- 120v-277v, 347v, and 480v
- 80 CRI; 4000K and 5000K
- Four Light Distribution Types: No Lens, Acrylic General Distribution, Acrylic Aisle Distribution, and Acrylic Medium Distribution
- Multiple Power Connection Options
- 6kV/3kA Surge Protection Standard
- 20kV/10kA Additional Surge Protection Optional
- Orange Painted End Cap for Emergency Fixture Identifier
- High Ambient Operating Temp. Available to 65°C
- Battery Backup Available

#### Field Installed Options

- Battery Backup Kit
- Wireguard Kit

#### Control Types Available

- Field or Factory Installed Control and Sensor Options
- Manual Programming Sensors
- Remote Programming Sensors
- Remote Programming with Zoning

#### Certifications / Listings\*

- Buy American Act Compliant
- UL/cUL Listed
- UL Damp Rated
- DLC® Listed Standard and Premium
- CA Title 20 Compliant Battery Backup Available

#### Mounting Options

- Suspended Mounting
- Surface Mounting
- Rigid Mounting

Wireguard kits available for protection when exposed to potential impact

Narrow, light-weight aluminum design for optimal with ease of handling in the field that reduces installation time and labor costs

Four light distribution types to meet your application needs

High efficacy chips for optimal performance



\*Varies by fixture configuration

# LED HIGH BAY

## HARRIS STAR LINE FREEZER HIGH BAY

### HSLF1 SPECIFICATIONS

#### Fixture Sizes

- 4' Standard

#### Lumen Range / LPW

- 15,000 to 29,000 Lumens, up to 172 LPW

#### Factory Installed Features and Options

- 120v-277v, 347v, and 480v
- 80 CRI; 4000K and 5000K
- Three Light Distribution Options: No Lens, Acrylic General Lens, and Acrylic Narrow Aisle Lens
- Multiple Power Connection Options
- 6kV/3kA Surge Protection Standard
- 20kV/10kA Additional Surge Protection Available
- Orange Painted End Cap for Emergency Fixture Identifier

#### Field Installed Options

- Wireguard Kits

#### Control Types Available

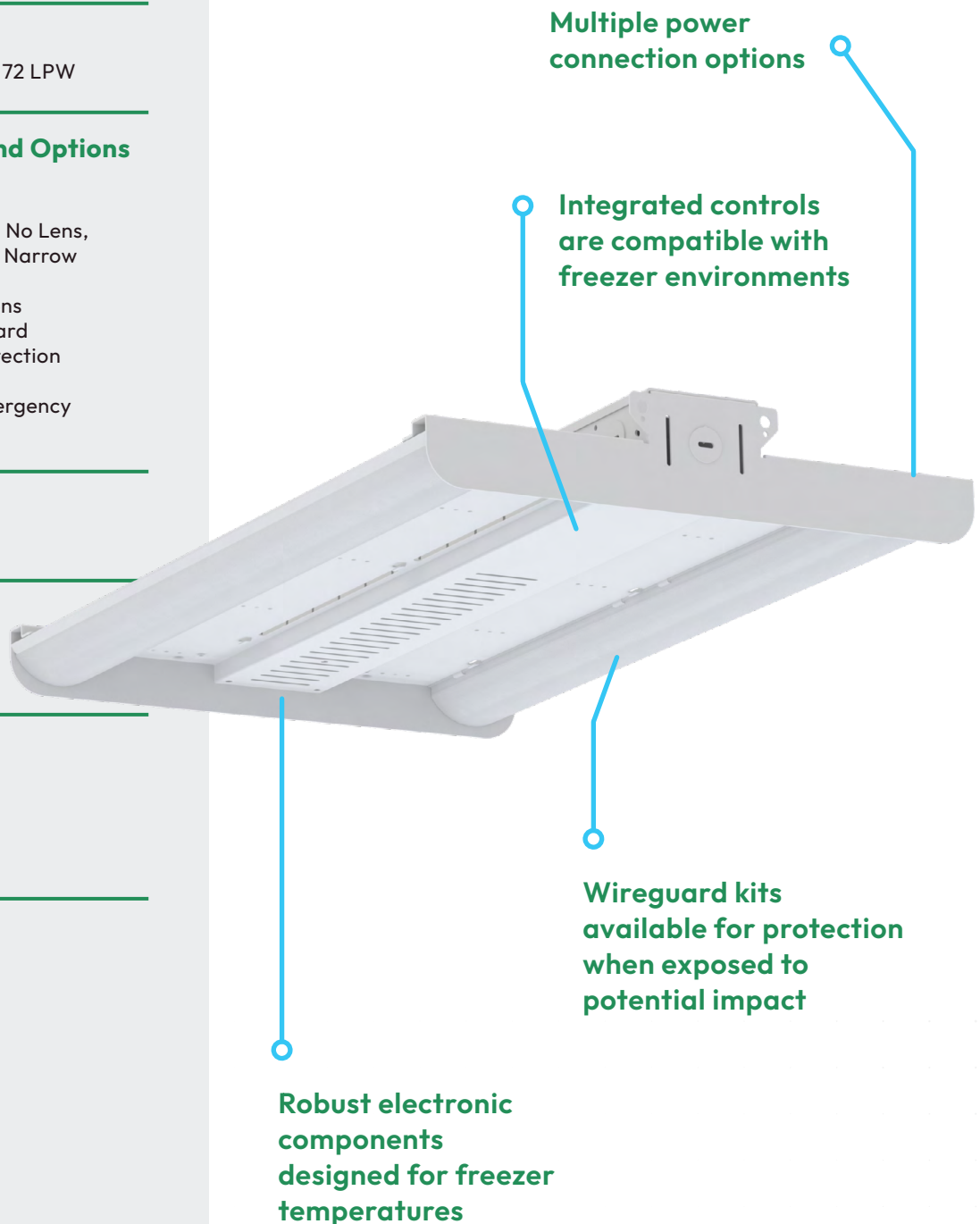
- Factory Installed Sensor Options
- Remote Programming Sensor

#### Certifications / Listings\*

- Buy American Act Compliant
- UL/cUL Listed
- UL Damp Rated
- DLC® Listed Premium

#### Mounting Options

- Suspended Mounting
- Rigid Mounting



Multiple power connection options

Integrated controls are compatible with freezer environments

Wireguard kits available for protection when exposed to potential impact

Robust electronic components designed for freezer temperatures

\*Varies by fixture configuration

# LED HIGH BAY

ISON® LED HIGH BAY FIXTURE, GEN 2

## LMAF2 SPECIFICATIONS

### Fixture Sizes

- 4' or 8'

### Lumen Range / LPW

- 9,000 or 18,000 Lumens, up to 171 LPW

### Factory Installed Features and Options

- 120v-277v, 347v, and 480v
- 80 CRI; 4000K CCT
- No Lens or Acrylic Frosted Lens Available

### Certifications / Listings\*

- Buy American Act Compliant
- UL/cUL Listed
- UL Damp Rated
- DLC® Listed Standard

### Mounting Options

- Suspended Mounting



Light-weight, aluminum body for ideal thermal dissipation and reduced ceiling grid load

No lens or frosted acrylic lens to provide glare reduction in the environment

*\*Varies by fixture configuration*

# LED HIGH BAY

## HARRIS LED PATRIOT SLIMLINE™ HIGH BAY, GEN 2

### HBHS2 SPECIFICATIONS

#### Fixture Sizes

- 4' Standard

#### Lumen Range / LPW

- 12,000 to 30,000 Lumens, up to 181 LPW

#### Factory Installed Features and Options

- 120v-277v, 347v, and 480v
- 80 CRI; 4000K and 5000K
- Two Light Distribution Types: No Lens or Frosted Acrylic Lens
- Multiple Power Connection Options
- 6kV/3kA Surge Protection Standard
- 20kV/10kA Additional Surge Protection Optional
- Orange Painted End Cap for Emergency Fixture Identifier
- Battery Backup Available

#### Field Installed Options

- Wireguard Kits
- Lens Install Kits
- External Transformers for High Voltage 347v/480v Installation

#### Control Types Available

- Factory or Field Installed Controls and Sensors
- Manual Programming Sensors
- Remote Programming Sensors
- On Site Network Programming Sensors
- Internet/Cloud Based Network Programming

#### Certifications / Listings\*

- Buy American Act Compliant
- UL/cUL Listed
- UL Damp Rated
- DLC® Listed Standard
- DLC® Listed Premium
- CA Title 20 Compliant Battery Backup Available

#### Mounting Options

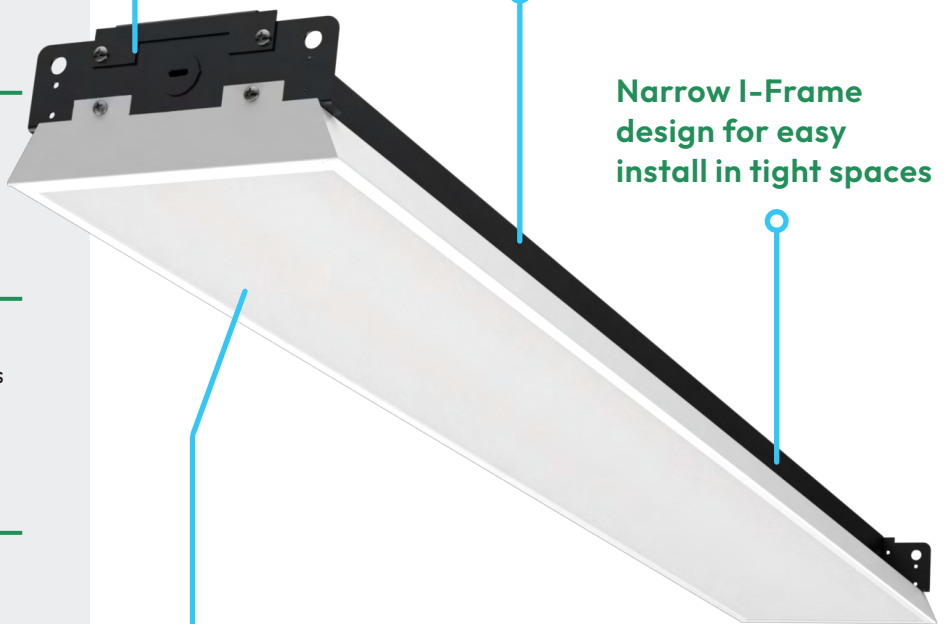
- Suspended Mounting
- Surface Mounting
- Rigid Mounting

Wireguard kits available for protection when exposed to potential impact

Multiple configurable power connection options; different whip lengths for less installation time

Narrow I-Frame design for easy install in tight spaces

Field installable lens kit available to add glare reduction in the field if needed



\*Varies by fixture configuration

# LED HIGH BAY

## TRITONPRO™ ROUND HIGH BAY SELECTABLE

### RSHB1 SPECIFICATIONS



#### Lumen Range / LPW

- 16,000 to 36,000 Lumens (tandem bracket up to 72,000 lumens), up to 176 LPW
- Each lumen package allows for field adjustment of lumen output



#### Factory Installed Features and Options

- 120v-277v and 277v-480v
- 80 CRI; Field Adjustable CCT from 3500K, 4000K, and 5000K
- Fixture Available in White or Black
- 6' Whip Standard
- Fixture Ships with Standard Eye Bolt
- 6kV/3kA Surge Protection Standard

#### Field Installed Options

- Polycarbonate Refractor or Aluminum Reflector
- Battery Backup Kit

#### Control Types Available

- Field Installed Controls and Sensors Options
- Remote Programming Sensors
- Remote Programming Sensors with Zoning

#### Certifications / Listings\*

- NSF/ANSI Standard 2
- UL/cUL Listed
- UL Wet Location Listed
- DLC® Listed Premium
- IK08 Impact Rating
- IP65 Ingress Protection Rating
- Field Adjustable Wattage/Light Output and CCT
- CA Title 20 Compliant Battery Backup Available

#### Mounting Options

- Surface Mounting
- Suspended Mounting
- Pendant Mounting
- Tandem Mounting

High efficacy round high bay, offering up to 176 LPW for significant energy savings

The compact and durable design is installation-friendly. Available in black and white finishes.

Field selectable light output up to 36,000 lumens and field selectable CCT from 3500K, 4000K, and 5000K



Sensor ready for quick field installation

Impact resistant polycarbonate lens withstands tough environments

\*Varies by fixture configuration

# LED HIGH BAY

## TRITONPRO™ COMPACT LINEAR HIGH BAY

### MLHB1 SPECIFICATIONS

#### Fixture Sizes

- 1', 2', 3' or 4'



#### Lumen Range / LPW

- 9,000 to 60,000 Lumens, up to 147 LPW



#### Factory Installed Features and Options

- 120v-277v and 277v-480v
- 80 CRI; Field Adjustable CCT 4000K and 5000K
- Three Lens Distribution Types: Polycarbonate Aisle Narrow, Polycarbonate Glare Reduction Medium, Polycarbonate Wide Distribution
- Sensor Base Comes Standard
- 6kV/3kA Surge Protection Standard
- Battery Backup Available

#### Field Installed Options

- Battery Backup Kit

#### Control Types Available

- Field Installed Control and Sensor Options
- Remote Programming Sensors

#### Certifications / Listings\*

- UL/cUL Listed
- UL Damp Rated
- DLC® Listed Standard and Premium
- Field Adjustable CCT
- CA Title 20 Compliant Battery Backup Available

#### Mounting Options

- Surface Mounting
- Suspended Mounting
- Rigid Pendant Mounting

Compact design with optimal thermal performance for ease of handling during installation to decrease installation time and cost

External CCT adjustable switch

Impact resistant polycarbonate lenses

Sensor base included for ease of field install sensors



\*Varies by fixture configuration

# LED HIGH BAY

## HARRIS LED WET RATED ROUND HIGH BAY

### WRRH1 SPECIFICATIONS

#### Lumen Range / LPW

- 13,000 or 19,000 Lumens, up to 132 LPW

#### Factory Installed Features and Options

- 120v-277v
- 80 CRI; 4000K and 5000K
- 6ft Power Cord Standard
- 10kV/5kA Surge Protection Standard

#### Control Types Available

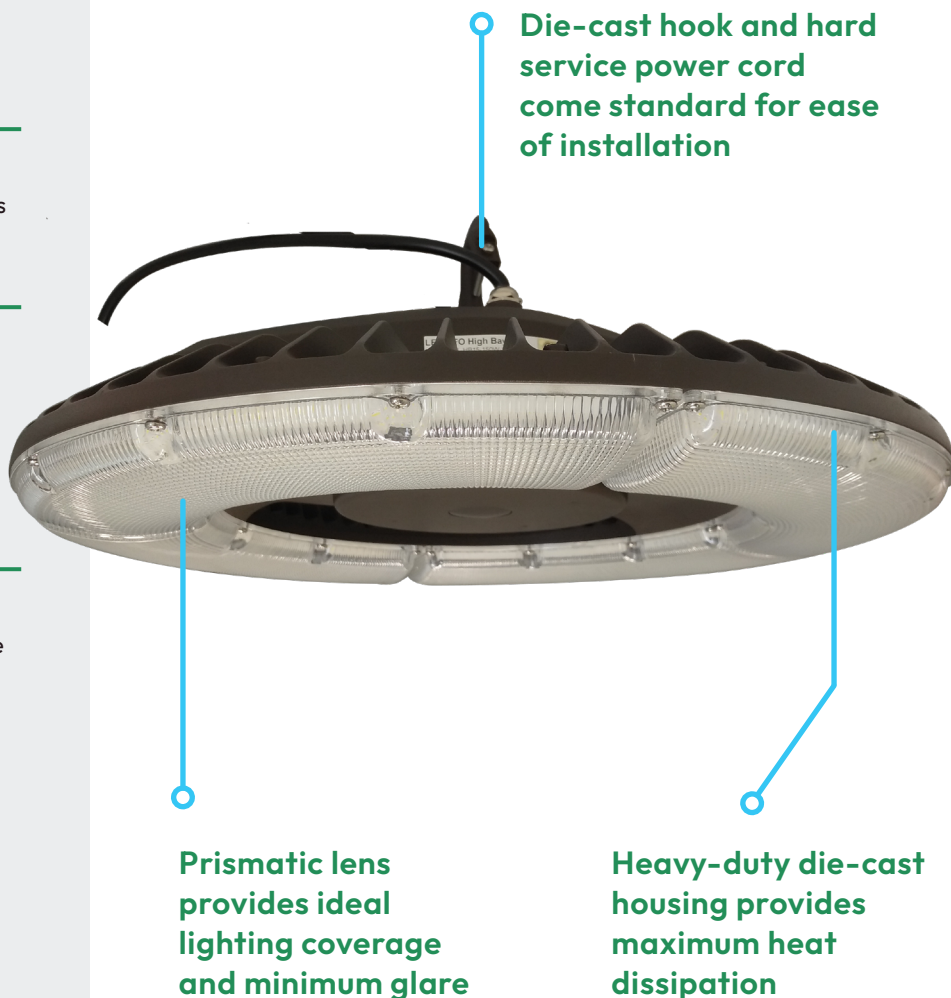
- Factory Installed Controls and Sensors Options
- Programming Controls
- Remote Programming with Zoning

#### Certifications / Listings\*

- Dark Sky Compliant
- UL/cUL Listed
- UL Wet Listed
- IP66 Rated
- IP65 Rated With Sensor
- DLC® Listed Standard

#### Mounting Options

- Hook Mounting Comes Standard with SE Cable



\*Varies by fixture configuration

# LINEAR STRIP

## TRITONPRO™ COMMERCIAL SELECTABLE STRIP LIGHT, GEN 1

### CSSL1 SPECIFICATIONS

#### Fixture Sizes

- 2', 4' or 8'



#### Lumen Range / LPW

- 1,000 to 10,400 Lumens
- Each fixture model allows for field adjustment of lumen output



#### Factory Installed Features and Options

- 120v-277v
- 80 CRI; Field Adjustable CCT from 3000K 3500K, 4000K, 5000K and 6500K
- Frosted Lens
- Battery Backup Available
- Hardwired Standard
- Standalone Control

#### Field Installed Options

- Control Options
- Battery Backup Kit
- Continuous Mounting Plate

#### Control Types Available

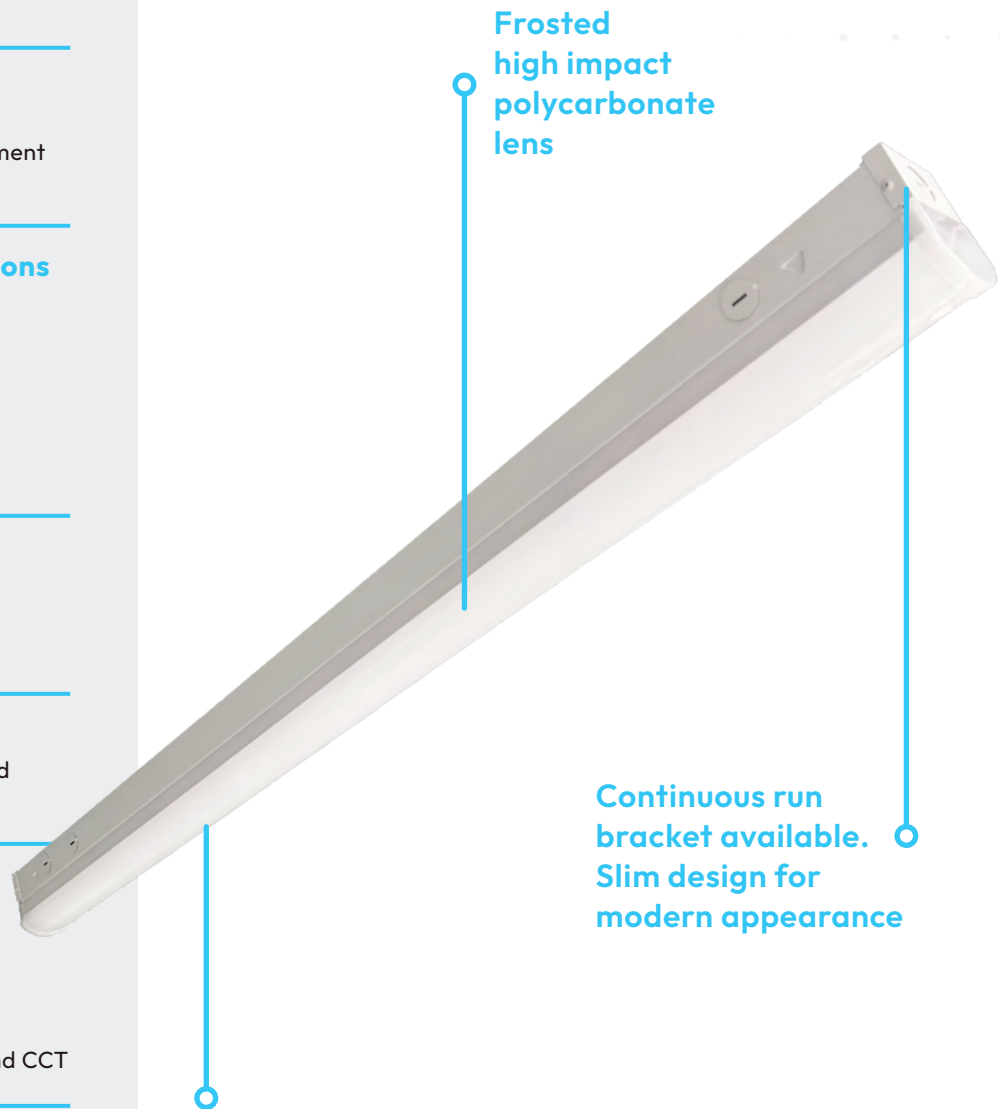
- Factory and field-installed standalone and bluetooth control options

#### Certifications / Listings\*

- cULus Listed
- UL Listed Damp
- DLC® Listed Standard
- FCC Certified
- RoHS Compliant
- Field Adjustable Wattage/Light Output and CCT

#### Mounting Options

- Surface Mounting
- Suspended Mounting
- Continuous End-to-end Connection



Frosted high impact polycarbonate lens

Continuous run bracket available. Slim design for modern appearance

Easily adjustable dip switches allow 5 different selections of light output and CCT

\*Varies by fixture configuration

# LED LINEAR

## HARRIS LED MULTIPURPOSE LINEAR, GEN 2

### MPHL2 SPECIFICATIONS

#### Fixture Sizes

- 4' or 8'

#### Lumen Range / LPW

- 2,000 to 12,000 Lumens, up to 168 LPW

#### Factory Installed Features and Options

- 120v-277v and 347v
- 80 CRI; 3500K, 4000K, and 5000K
- Two Light Distribution Types: No Lens and Acrylic Frosted Lens
- Multiple Power Connection Options
- 10kA/5kV Additional Surge Protection
- Continuous Run System
- Plastic End Caps
- Battery Backup Available

#### Field Installed Options

- Wireguard Kit
- Tandem Kit
- Battery Backup Kit

#### Control Types Available

- Factory or Field Installed Control and Sensor Options
- Manual Programming Sensor
- Remote Programming Sensor
- Remote Programming Sensor with Zoning

#### Certifications / Listings\*

- Buy American Act Compliant
- UL/cUL Listed
- UL Listed Damp
- DLC® Listed Standard
- BABA Compliant
- CA Title 20 Compliant Battery Backup Available

#### Mounting Options

- Surface Mounting
- Suspended Mounting
- Continuous Run



Plastic end caps available

Innovative design allows for continuous run between fixtures

Fixture wireguard kit for field install for rugged environments that easily attaches to the fixture housing

Wire harness option provides left, right and center electrical connection for quick connect system

\*Varies by fixture configuration

# LED LINEAR

## HARRIS LED STRIP LUMINAIRE, GEN 2

### SFHC2 SPECIFICATIONS

#### Fixture Sizes

- 4' or 8'

#### Lumen Range / LPW

- 2,000 to 10,000 Lumens, up to 182 LPW

#### Factory Installed Features and Options

- 120v-277v
- 80 CRI; 3500K, 4000K, and 5000K
- Three Light Distribution Options: No Lens, Frosted Acrylic 2' Lens, Frosted Acrylic 3' Lens
- Multiple Power Connection Options
- Battery Backup Available

#### Field Installed Options

- Wireguard Kit

#### Control Types Available

- Factory and Field Installed Sensor and Controls Available
- Manual Programming Sensors
- Remote Programming Sensors
- Remote Programming with Zoning Sensors

#### Certifications / Listings\*

- Buy American Act Compliant
- UL/cUL Listed
- DLC® Listed Standard
- BABA Compliant
- CA Title 20 Compliant Battery Backup Available

#### Mounting Options

- Surface Mounting
- Suspended Mounting

Multiple fixture knockouts for quick connection to power

Can be tandem mounted to create electrical raceway between fixtures



Fixture comes with installation tethers to hold cover in place for one person installation

Fixture wireguard kit for field install for rugged environments that easily attaches to the fixture housing

\*Varies by fixture configuration

# LED LINEAR

## HARRIS LED QUICK ACCESS STRIP

### HQAS1 SPECIFICATIONS

#### Fixture Sizes

- 4' or 8'

#### Lumen Range / LPW

- 3,000 to 8,000 Lumens, up to 151 LPW



#### Factory Installed Features and Options

- 120v-277v
- 80 CRI; Field Adjustable CCT: 3500K, 4000K, and 5000K
- Polycarbonate Frosted Lens Standard
- Hardwired Standard
- Battery Backup Available

#### Field Installed Options

- Cord Kits

#### Control Types Available

- Factory or Field Installed Control and Sensor Options
- Manual Programming Sensors

#### Certifications / Listings\*

- UL/cUL Listed
- UL Damp Rated
- DLC® Listed Standard
- Field Adjustable CCT
- CA Title 20 Compliant Battery Backup Available

#### Mounting Options

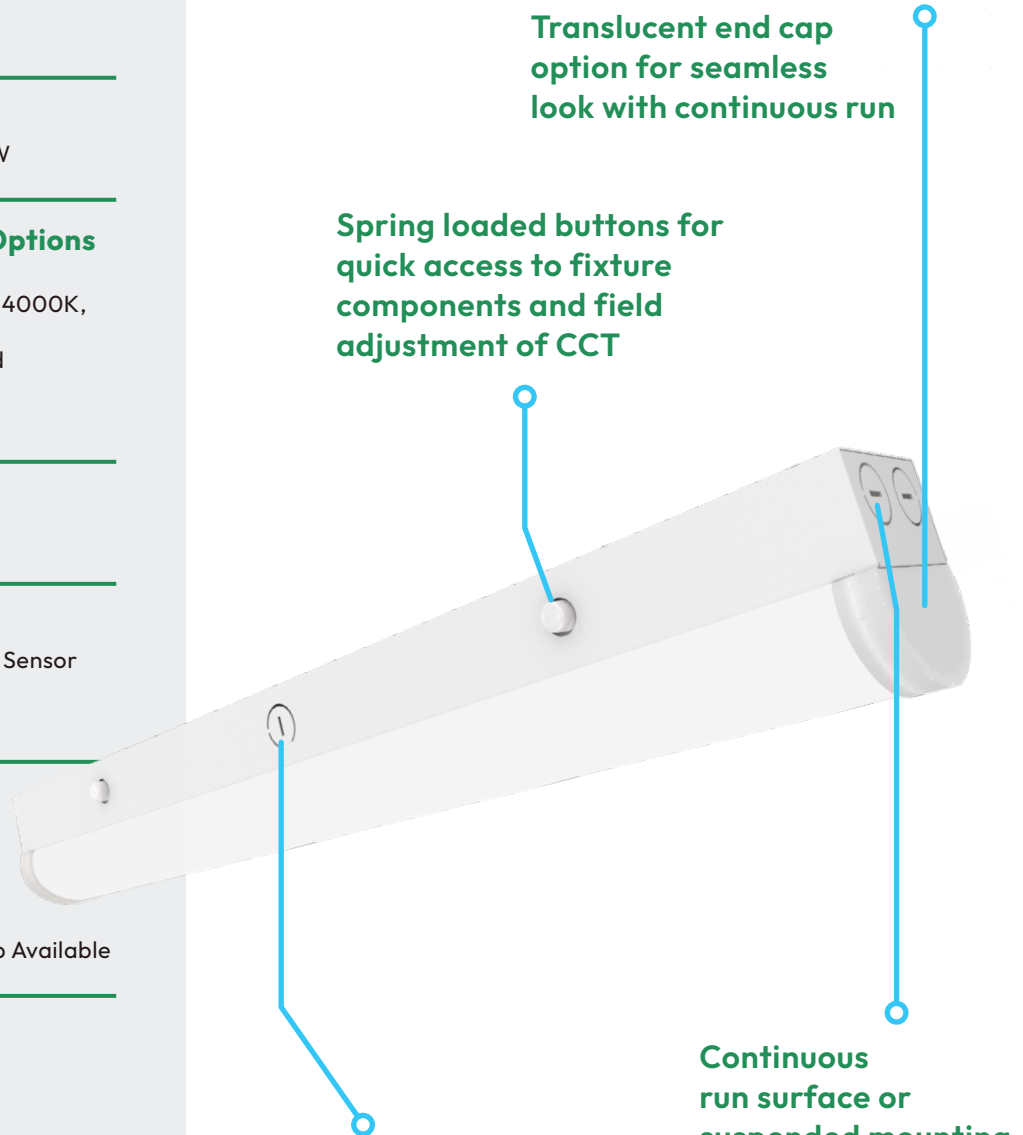
- Surface Mounting
- Suspended Mounting
- Continuous Run

Translucent end cap option for seamless look with continuous run

Spring loaded buttons for quick access to fixture components and field adjustment of CCT

Continuous run surface or suspended mounting brackets available

Multiple knockout locations for ease of installation, maintenance and wiring



\*Varies by fixture configuration

# LED LINEAR RETROFIT

## HARRIS LED STRIP RETROFIT, GEN 2

### SFHR2 SPECIFICATIONS

#### Fixture Sizes

- 4' or 8' Length, 4.25" Width or 5.00" Width Retrofit Kits

#### Lumen Range / LPW

- 2,000 to 10,000 Lumens, up to 182 LPW

#### Factory Installed Features and Options

- 120v-277v
- 80 CRI; 3500K, 4000K, and 5000K
- Three Light Distribution Options: No Lens, Frosted Acrylic 2' Lens, Frosted Acrylic 3' Lens
- Battery Backup Available

#### Field Installed Options

- Wireguard Kits

#### Control Types Available

- Factory and Field Installed Sensor and Controls Available
- Manual Programming Sensors
- Remote Programming Sensors
- Remote Programming with Zoning Sensors

#### Certifications / Listings\*

- Buy American Act Compliant
- UL/cUL Listed
- DLC® Listed Standard
- BABA Compliant
- CA Title 20 Compliant Battery Backup Available

Fixture wireguard kit for field install for rugged environments available that easily attaches to the existing fixture housing

Can be tandem mounted to create electrical raceway



Fixture comes with installation tethers to hold cover in place for one person installation

\*Varies by fixture configuration

# LED LINEAR RETROFIT

## TRITONPRO™ LED LUMEN SELECT STRIP RETROFIT, GEN 2

### LSSR2 SPECIFICATIONS

#### Fixture Sizes

- 4' or 8' Retrofit Lengths



#### Lumen Range / LPW

- 3,000 to 10,000 Lumens, up to 148 LPW
- Each lumen package allows for field adjustment of lumen output



#### Factory Installed Features and Options

- 120v-277v
- 80 CRI; Field Adjustable CCT from 3500K, 4000K, and 5000K
- Polycarbonate Frosted Lens Standard

#### Field Installed Options

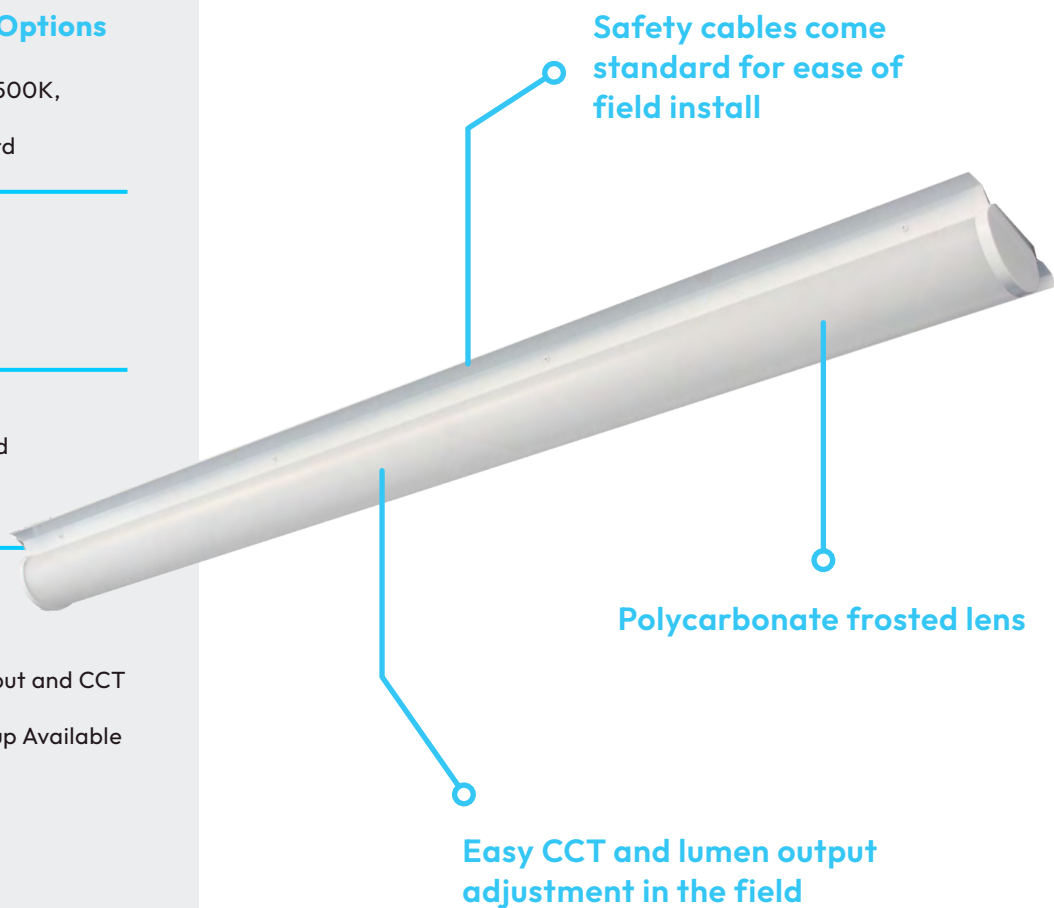
- Field Installed Control and Sensors
- Remote Programming Sensors
- Battery Backup

#### Control Types Available

- Factory or Field Installed Control and Sensor Options
- Manual Programming Sensors

#### Certifications / Listings\*

- UL/cUL Listed
- UL Damp Rated
- Field Adjustable Wattage/Light Output and CCT
- DLC® Listed Standard
- CA Title 20 Compliant Battery Backup Available



\*Varies by fixture configuration

# LED VAPORTIGHT

## ISON® LED VAPORTIGHT NARROW BODY, GEN 2

### VTON2 SPECIFICATIONS

#### Fixture Sizes

- 4' or 8'

#### Lumen Range / LPW

- 3,000 to 20,000 Lumens, up to 165 LPW

#### Factory Installed Features and Options

- 120v-277v, 347v, and 480v
- 80 CRI; 4000K and 5000K
- Acrylic, Impact Resistant, Ribbed Frosted Lens
- Multiple Power Connection Options
- 6kV/3kA Surge Protection Standard
- 20kV/10kA Additional Surge Protection Optional
- Cold Temperature Option (-40C)
- Battery Backup Available

#### Control Types Available

- Factory Installed Control and Sensor Options
- Manual Programming Sensors
- Remote Programming Sensors

#### Certifications / Listings\*

- Buy American Act Compliant
- NSF/ANSI Standard 2
- UL/cUL Listed
- UL Wet Listed
- IP67
- IP66 When Using WSxx and WBxx Sensors
- IP65 When Using WWxx Sensor
- NEMA 4X Housing
- UL 5VA (f1) Fiberglass Housing
- High Pressure Washdown Up To 1500 PSI
- DLC® Listed Standard
- BABA Compliant
- CA Title 20 Compliant Battery Backup Available

#### Mounting Options

- Surface Mounting (Standard – Factory Shipped)
- Suspended Mounting

Durable and lightweight white fiberglass body

Configurable power connections for fast installation



Cold temperature option for cold storage environments

Marine Grade Stainless Steel latches and mounting brackets to withstand corrosion

Durable, impact resistant acrylic frosted lens to withstand tough environments

\*Varies by fixture configuration

# LED VAPORTIGHT

ISON® LED VAPORTIGHT WIDE BODY, GEN 2

## VTOD2 SPECIFICATIONS

### Fixture Sizes

- 2' or 4'

### Lumen Range / LPW

- 13,000 to 38,000 Lumens, up to 167 LPW

### Factory Installed Features and Options

- 120v-277v, 347v, and 480v
- 80 CRI; 4000K and 5000K
- Frosted Acrylic Lens Standard
- Multiple Power Connection Options
- 6kV/3kA Surge Protection Standard
- 20kV/10kA Additional Surge Protection Optional
- Cold Temperature Option (-40C)
- Battery Backup Available

### Control Types Available

- Factory Installed Control and Sensor Options
- Manual Programming Sensors
- Remote Programming Sensors

### Certifications / Listings\*

- Buy American Act Compliant
- NSF/ANSI Standard 2
- UL/cUL Listed
- UL Wet Listed
- IP67 for 4' Fixtures
- IP69 for 2' Fixtures
- IP66 When Using WSxx and WBxx Sensors
- IP65 When Using WWxx Sensor
- NEMA 4X Housing
- UL 5VA (f1) Fiberglass Housing
- High Pressure Washdown Up To 1500 PSI
- DLC® Listed Standard
- BABA Compliant
- CA Title 20 Compliant Battery Backup Available

### Mounting Options

- Surface Mount (Standard - Factory Shipped)
- Suspended Mounting
- Rigid Mounting

\*Varies by fixture configuration



Cold temperature option for cold storage environments

Configurable power connections for fast installation

Marine Grade Stainless Steel latches and mounting brackets to withstand corrosion

Durable acrylic lens and reinforced fiberglass body built to withstand tough environments

# LED VAPORTIGHT

## TRITONPRO™ LED SLIMLINE LUMEN SELECT VAPORTIGHT

### VTSS1 SPECIFICATIONS

#### Fixture Sizes

- 4' Standard



#### Lumen Range / LPW

- 3,500 to 7,000 Lumens, up to 149 LPW
- Each lumen package allows for field adjustment of lumen output



#### Factory Installed Features and Options

- 120v-277v
- 80 CRI; Field Adjustable CCT from 3500K, 4000K, and 5000K
- 6kV/3kA Surge Protection Standard
- Polycarbonate Frosted Lens Standard
- Battery Backup Available

#### Field Installed Options

- Field Installed Sensor Available
- Remote Programming Sensors

#### Control Types Available

- Multiple Power Connection Options

#### Certifications / Listings\*

- UL/cUL Listed
- IP66 Ingress Protection Rating
- NEMA 4X
- IK10 Impact Rating
- DLC® Listed Standard
- Field Adjustable Wattage/Light Output and CCT
- CA Title 20 Compliant Battery Backup Available

#### Mounting Options

- Surface Mount (Standard – Factory Shipped)
- Suspended Mounting (Standard – Factory Shipped)

Robust polycarbonate enclosure in a light gray finish

Multiple knockouts for flexibility in mounting

Multiple power connection options; different whip lengths for less installation time

Stainless steel latches and mounting brackets to withstand harsh environments

Impact resistant polycarbonate lens for rugged environments that delivers a wide 120° distribution

Easy access to internal CCT and lumen adjustment

# LED RETROFIT LINEAR HIGH BAY

ISON® LINEAR LED MODULE RETROFIT, GEN 2

## LMAR2 SPECIFICATIONS

### Fixture Sizes

- 4' or 8' Retrofit Lengths; 2 Widths Available per Length

### Lumen Range / LPW

- 9,000 or 18,000 Lumens, up to 171 LPW

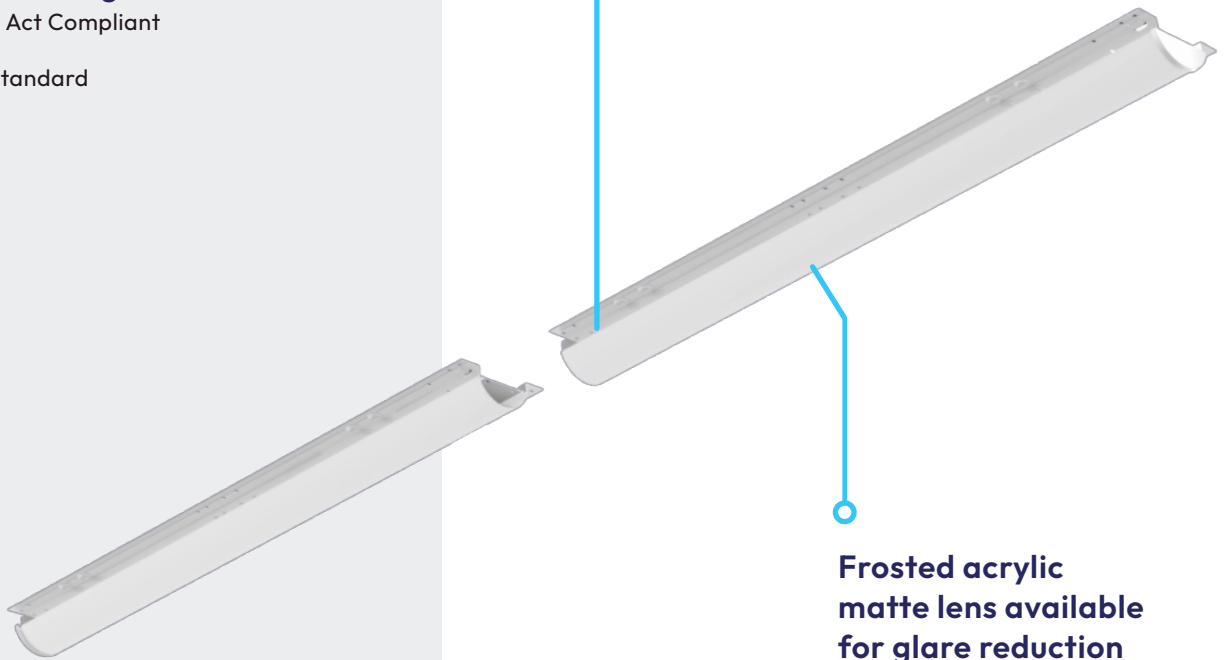
### Factory Installed Features and Options

- 120v-277v, 347v, and 480v
- 80 CRI; 4000K
- Two Light Distribution Options: No Lens or Frosted Acrylic Lens

### Certifications / Listings\*

- Buy American Act Compliant
- UL/cUL Listed
- DLC® Listed Standard

Retrofit light engine is designed to fit in existing linear fluorescent high or low bay fixture channels for ease of install



\*Varies by fixture configuration

# LED TROFFER

## TRITONPRO™ LED TROFFER SELECTABLE, GEN 4

### LT HES4 SPECIFICATIONS

#### Fixture Sizes

- 1' x 4', 2' x 2', or 2' x 4'



#### Lumen Range / LPW

- 2,000 to 5,500 Lumens, up to 155 LPW
- Each lumen package allows for field adjustment of lumen output



#### Factory Installed Features and Options

- 120v-277v
- 80 CRI; Field Adjustable CCT from 3500K, 4000K, and 5000K
- Frosted Lens
- Battery Backup Available
- Option for Control Receptacle for Easy Sensor Installation

#### Field Installed Options

- Control Options
- Battery Backup Kit

#### Control Types Available

- Control receptacle option allows for fast and easy installation of standalone or Bluetooth Mesh sensors in the field

#### Certifications / Listings

- UL/cUL Listed
- UL Listed Damp
- DLC® Listed Premium
- TAA Compliant
- Certified for Insulated Plenums (Type IC)
- Field Adjustable Wattage/Light Output and CCT

#### Mounting Options

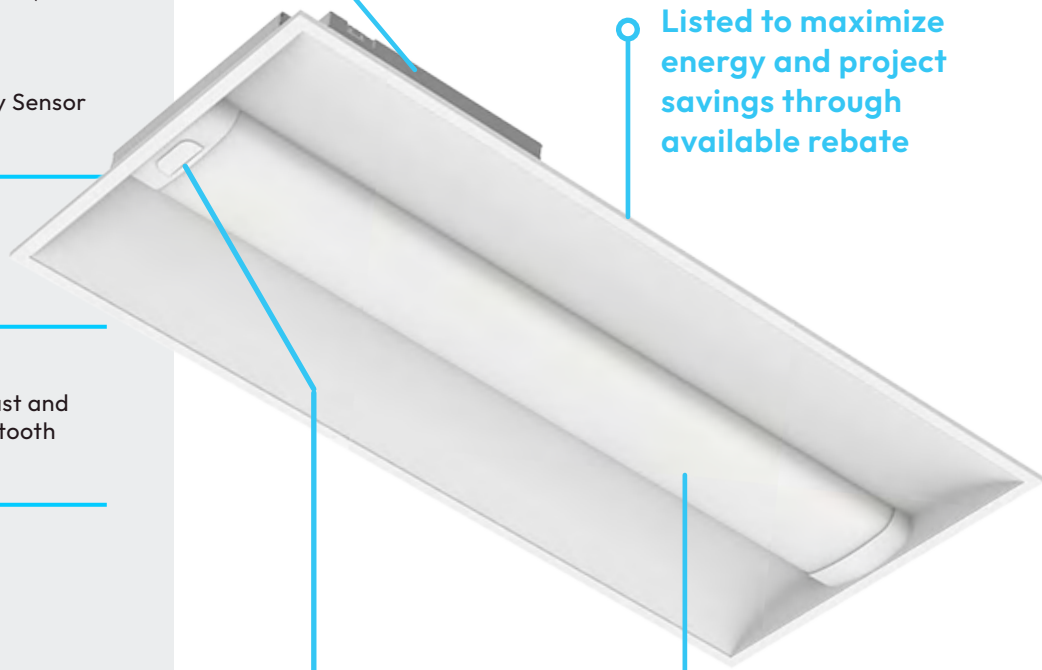
- Recessed Mounting for T-Bar Grid Systems
- Surface Mounting Kit Available
- Recessed Drywall Kit Available

External dip switches allow the user to select between 3 CCT and 3 lumen outputs in the field

Up to 155 LPW and DLC Listed to maximize energy and project savings through available rebate

Option for Control Receptacle for Easy Sensor Installation

Uniform light distribution across the lens



# LED TROFFER

## HARRIS LED TROFFER, GEN 2

### LTHE2 SPECIFICATIONS

#### Fixture Sizes

- 1' x 4', 2' x 2', or 2' x 4'

#### Lumen Range / LPW

- 2,000 to 8,000 Lumens, up to 158 LPW

#### Factory Installed Features and Options

- 120v-277v and 347v
- 80 CRI; 3500K, 4000K, and 5000K
- Different Dimming Capacity Drivers
- Dial Dimmer
- Britex™ Coating
- Battery Backup Available

#### Field Installed Options

- Seismic Cable

#### Control Types Available

- Factory Installed Controls and Sensors Available
- Manual Programming Sensors
- Remote Programming Sensors
- Remote Programming with Zoning

#### Certifications / Listings\*

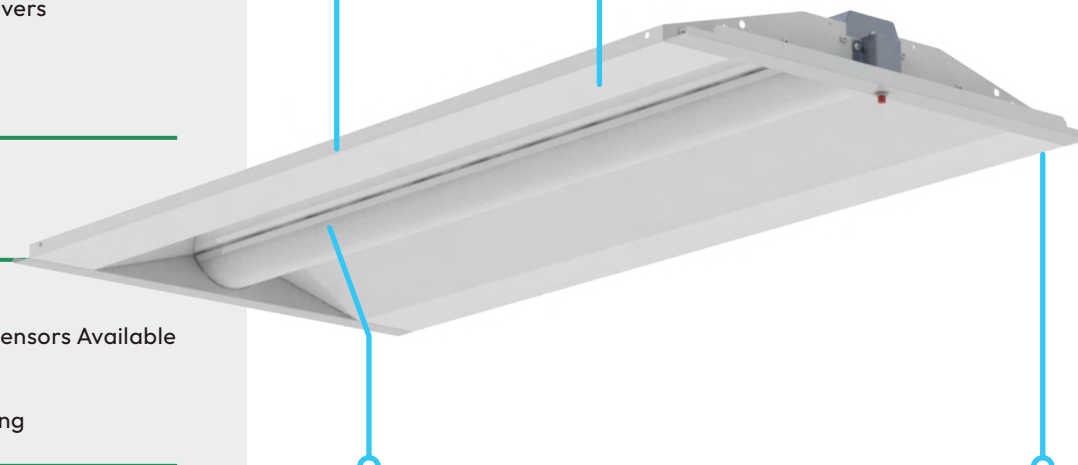
- Buy American Act Compliant
- UL/cUL Listed
- DLC® Listed Standard
- BABA Compliant
- CA Title 20 Compliant Battery Backup Available

#### Mounting Options

- Recessed Mounting for T-Bar Grid Systems

Dial dimmer available for field adjustment of power and lumen output option

Title 24 compliant seismic cable kit available that easily attaches to the fixture housing



Wide light distribution reduces wall and ceiling dark spaces

Britex™ coating available with antimicrobial properties to eliminate contaminants that come in contact with the unit

\*Varies by fixture configuration

# LED TROFFER

## HARRIS LED SURFACE MOUNT TROFFER, GEN 3

### LSME3 SPECIFICATIONS

#### Fixture Sizes

- 1' x 4', 2' x 2', or 2' x 4'

#### Lumen Range / LPW

- 2,000 to 8,000 Lumens, up to 165 LPW

#### Factory Installed Features and Options

- 120v-277v and 347v
- 80 CRI; 3500K, 4000K, and 5000K
- Different Dimming Capacity Drivers
- Dial Dimmer
- Battery Backup Available

#### Field Installed Options

- Factory Installed Controls and Sensors Available
- Manual Programming Sensors
- Remote Programming Sensors
- Remote Programming with Zoning

#### Certifications / Listings\*

- Buy American Act Compliant
- UL/cUL Listed
- CA Title 20 Compliant Battery Backup Available

#### Mounting Options

- Surface Mounting



Dial dimmer available for field adjustment of power and lumen output option

Surface mount troffer with same aesthetic of the Orion LDRE3 for continuous look throughout application

Aluminum fixture body and aluminum pan for optimal thermal dissipation to extend the life of electrical components

\*Varies by fixture configuration

# LED TROFFER

## TRITONPRO™ LED TROFFER SELECTABLE, GEN 3

### LTHES3 SPECIFICATIONS

#### Fixture Sizes

- 2' x 2' or 2' x 4'



#### Lumen Range / LPW

- 2,000 to 6,000 Lumens, up to 148 LPW
- Each lumen package allows for field adjustment of lumen output



#### Factory Installed Features and Options

- 120v-277v
- 80 CRI; Field Adjustable CCT from 3500K, 4000K, and 5000K
- Frosted Lens
- Battery Backup Available

#### Field Installed Options

- Battery Backup Kit

#### Certifications / Listings\*

- UL/cUL Listed
- UL Listed Damp
- DLC® Listed Standard and Premium
- Certified for Insulated Plenums (Type IC)
- Field Adjustable Wattage/Light Output and CCT

#### Mounting Options

- Recessed Mounting for T-Bar Grid Systems



Frosted lens reduces glare and delivers uniform light across the lens

Driver with 12v AUX for use with external sensors

DLC® Certified to maximize energy and project savings through available rebates

\*Varies by fixture configuration

# FLAT PANEL

## TRITONPRO™ FLAT PANEL BACKLIGHT SELECTABLE

### FPBS1 SPECIFICATIONS

#### Fixture Sizes

- 1' x 4', 2' x 2', or 2' x 4'



#### Lumen Range / LPW

- 2,500 to 6,250 Lumens, up to 140 LPW
- Each fixture model allows for field adjustment of lumen output



#### Factory Installed Features and Options

- 120v-277v
- 80 CRI; Field Adjustable CCT from 3500K, 4000K, and 5000K
- Control Ready Fixture Base for Easy Sensor Installation

#### Field Installed Options

- Control Options
- Battery Backup Kit

#### Control Types Available

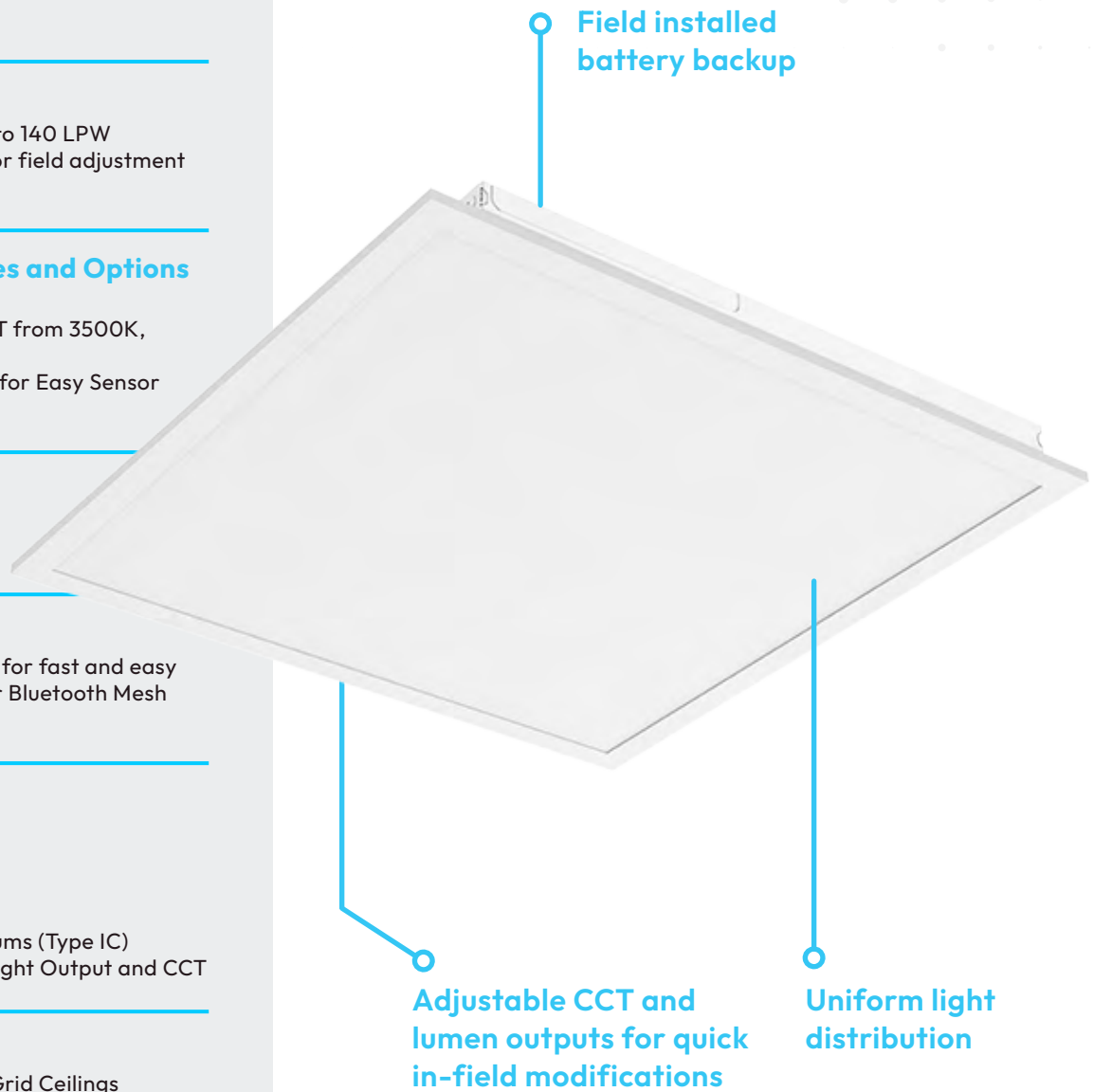
- Control ready option allows for fast and easy installation of standalone or Bluetooth Mesh sensors in the field

#### Certifications / Listings\*

- UL/cUL Listed
- UL Listed Damp
- DLC® Listed Premium
- TAA Compliant
- Certified for Insulated Plenums (Type IC)
- Field Adjustable Wattage/Light Output and CCT

#### Mounting Options

- Recessed Mount for T-Bar Grid Ceilings



\*Varies by fixture configuration

# LED TROFFER RETROFIT

TRITONPRO™ TROFFER RETROFIT SELECTABLE, GEN 4

## LDRES4 SPECIFICATIONS

### Fixture Sizes

- 1' x 4', 2' x 2', or 2' x 4'



### Lumen Range / LPW

- 2,000 to 5,500 Lumens, up to 149 LPW
- Each lumen package allows for field adjustment of lumen output



### Factory Installed Features and Options

- 120v-277v
- 80 CRI standard; Field Adjustable CCT from 3500K, 4000K, and 5000K
- Frosted Lens Standard
- Battery Backup Available
- Option for Control Receptacle for Easy Sensor Installation

### Field Installed Options

- Control Options
- Battery Backup Kit

### Control Types Available

- Control receptacle option allows for fast and easy installation of standalone or Bluetooth Mesh sensors in the field

### Certifications / Listings

- UL/cUL Listed
- UL Damp Listed
- DLC® Listed Premium
- TAA Compliant

### Mounting Options

- Universal Bracket for Recessed T-Bar Grids fits existing fluorescent troffer fixtures with either prismatic lens or parabolic louvers

Universal bracket installs in minutes saving time and money. Minimizes hob-site waste by re-purposing existing housing

External dip switches allow the user to select between 3 CCT and 3 lumen outputs in the field



Option for Control Receptacle for Easy Sensor Installation

Uniform light distribution across the lens

# LED TROFFER RETROFIT

HARRIS LED LDR® TROFFER RETROFIT, GEN 3

## LDRE3 SPECIFICATIONS

### Fixture Sizes

- 1' x 4', 2' x 2', or 2' x 4'

### Lumen Range / LPW

- 2,000 to 8,000 Lumens, up to 165 LPW

### Factory Installed Features and Options

- 120v-277v and 347v
- 80 CRI; 3500K, 4000K, and 5000K
- Different Dimming Capacity Drivers
- Dial Dimmer
- Britex™ Coating
- Battery Backup Available

### Field Installed Options

- Seismic Cable

### Control Types Available

- Factory Installed Controls and Sensors Available
- Manual Programming Sensors
- Remote Programming Sensors
- Remote Programming with Zoning

### Certifications / Listings\*

- Buy American Act Compliant
- UL/cUL Listed
- DLC® Listed Standard
- BABA Compliant
- CA Title 20 Compliant Battery Backup Available

### Mounting Options

- Standard, Air Handling and Lift Bracket Kits for Recessed T-Bar Grids

Installs in minutes with quick bracket system

Dial dimmer available for field adjustment of power and lumen output option



Ultra-lightweight aluminum body for ease of single person install

Title 24 compliant seismic cable kit available that easily attaches to the fixture housing

\*Varies by fixture configuration

# LED TROFFER RETROFIT

TRITONPRO™ TROFFER RETROFIT SELECTABLE, GEN 3

## LDRES3 SPECIFICATIONS

### Fixture Sizes

- 2' x 2' or 2' x 4'



### Lumen Range / LPW

- 3,000 to 19,000 Lumens, up to 151 LPW
- Each lumen package allows for field adjustment of lumen output



### Factory Installed Features and Options

- 120v-277v
- 80 CRI Standard; Field Adjustable CCT from 3500K, 4000K, and 5000K
- Frosted Lens Standard
- Battery Backup Available

### Field Installed Options

- Battery Backup Kit

### Certifications / Listings\*

- UL/cUL Listed
- UL Damp Listed
- DLC® Listed Standard and Premium
- CA Title 20 Compliant Battery Backup Available

### Mounting Options

- Universal Bracket for Recessed T-Bar Grids fits existing fluorescent troffer fixtures with either prismatic lens or parabolic louvers

Installs in minutes  
saving time and money

Architectural  
design enhances  
the appearance  
of any space



Minimizes job-site  
waste by repurposing  
existing fluorescent  
housing

The frosted lens  
minimizes glare and  
ensures uniform  
light distribution  
across its surface

\*Varies by fixture configuration

# EMERGENCY / EXIT LIGHT

## HARRIS LED EMERGENCY LIGHTING

### ELWUB SPECIFICATIONS

#### Factory Installed Features and Options

- 120v or 277v
- Battery Backup Available

#### Field Installed Options

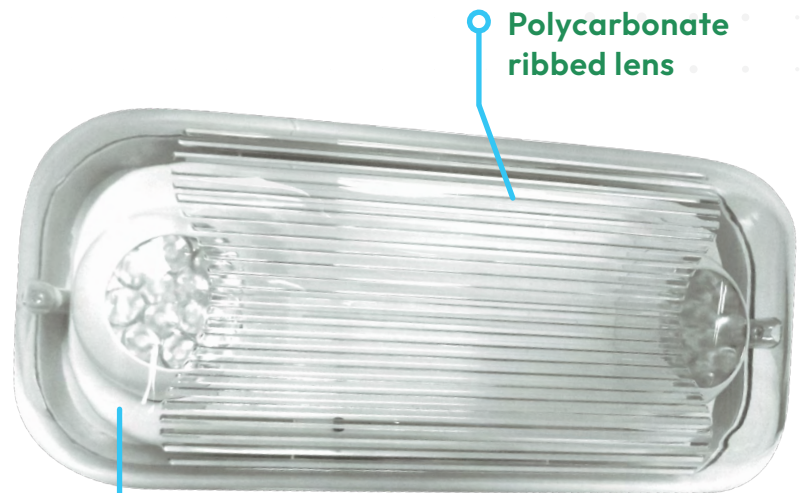
- Wireguard Kit

#### Certifications / Listings\*

- UL/cUL Listed
- UL 924

#### Mounting Options

- Universal Mount Pattern Back Plate Knockout



Polycarbonate ribbed lens

Injection-molded, high-impact, UV-Stabilized thermoplastic housing for rugged environments

### ELRUB SPECIFICATIONS

#### Factory Installed Features and Options

- 120v or 277v
- White or Black Fixture Color
- Battery Backup Available

#### Field Installed Options

- Wireguard Kit
- Clear Coverguard Kit

#### Certifications / Listings\*

- UL/cUL Listed
- UL 924

#### Mounting Options

- Universal Mount Pattern Back Plate Knockout



Available in black and white housing colors

Injection-molded, high-impact, UV-Stabilized thermoplastic housing for rugged environments

\*Varies by fixture configuration

# EMERGENCY / EXIT LIGHT

## HARRIS LED EXIT SIGN & EMERGENCY COMBINATION

### ECRUB SPECIFICATIONS

#### Factory Installed Features and Options

- 120v-277v
- White or Black Fixture
- Green or Red Letter Color
- Single or Dual Face Application
- Battery Backup Available

#### Field Installed Options

- High Lumen
- Wireguard Kit

#### Certifications / Listings\*

- UL/cUL Listed
- NEC

#### Mounting Options

- Universal Canopy Mount For Wall, Side, or Pendent Mounting

### ECSUB SPECIFICATIONS

#### Factory Installed Features and Options

- 120v or 277v
- White or Black Fixture
- Red or Green Letter Color
- Single or Dual Face Application
- Battery Backup Available

#### Field Installed Options

- Self Diagnostic
- Wireguard Kit

#### Certifications / Listings\*

- UL/cUL Listed
- UL Damp Rated
- NEC

#### Mounting Options

- Universal Mount Pattern Back Plate Knockout

Universal chevrons easily snap out for directional indication

Red or green letter coloring available



Fully-adjustable, glare-free LED lighting heads to change light direction

Single or dual face application for multiple sign viewpoints

Universal chevrons easily snap out for directional indication

Red or green letter coloring available



Fully adjustable glare free LED lighting heads to change light direction

\*Varies by fixture configuration

# EMERGENCY / EXIT LIGHT

## HARRIS LED EXIT SIGN & EMERGENCY COMBINATION

### EXLUB SPECIFICATIONS

#### Factory Installed Features and Options

- 120v or 277v
- White or Black Fixture
- Red or Green Letter Color
- AC Only
- Single or Dual Face Application
- Battery Backup Available

#### Field Installed Options

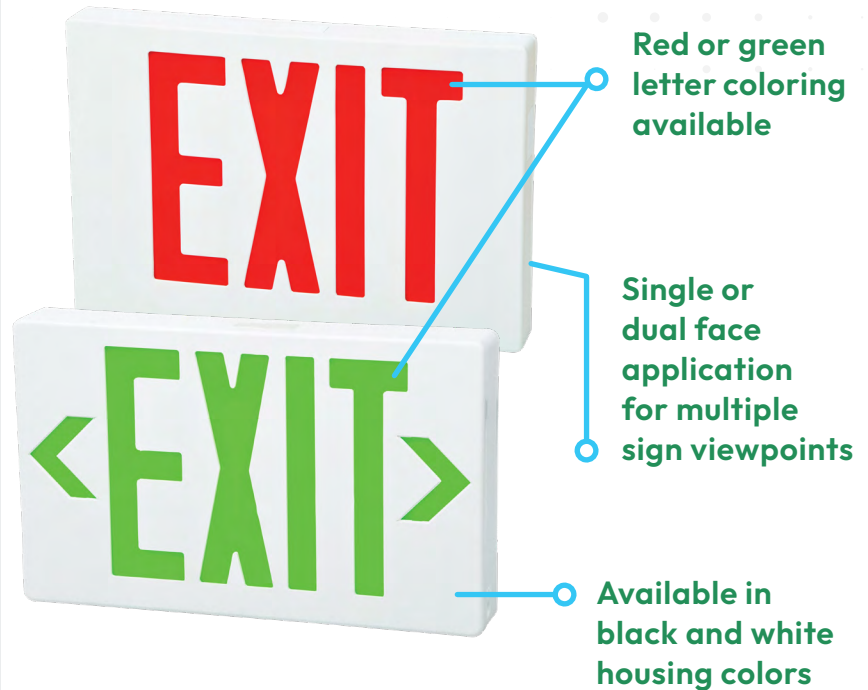
- Self Diagnostic
- Clear Cover Guard

#### Certifications / Listings\*

- UL/cUL Listed
- UL Damp Rated
- NEC

#### Mounting Options

- Universal Mount Pattern Back Plate Knockout



### ELSUB SPECIFICATIONS

#### Factory Installed Features and Options

- 120v or 277v
- White or Black Fixture Color
- Battery Backup Available

#### Field Installed Options

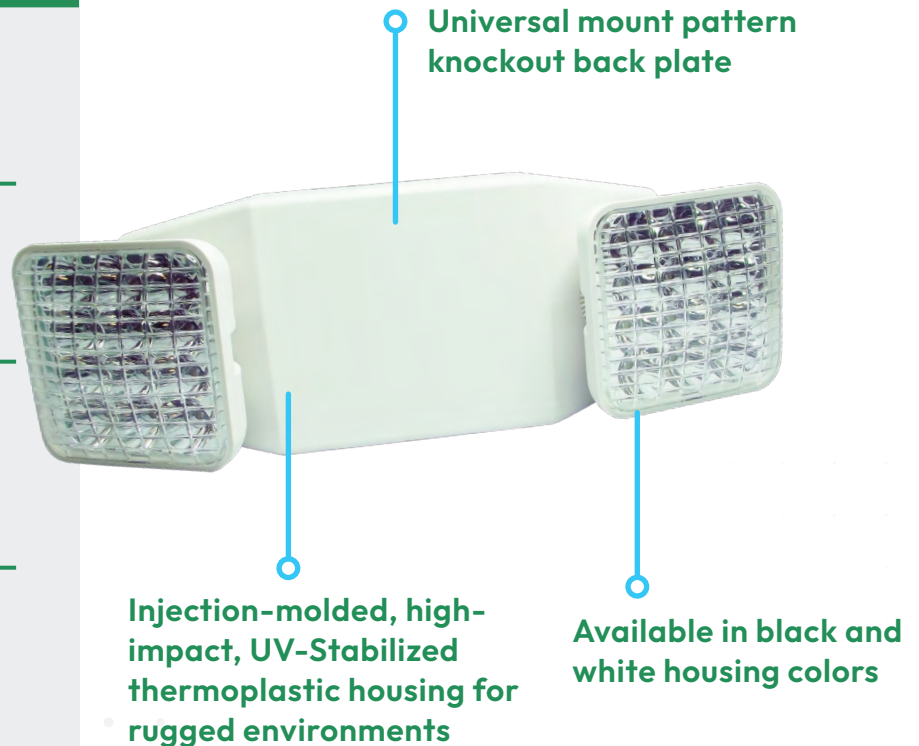
- Wireguard Kit
- Clear Coverguard Kit
- Self Diagnostic

#### Certifications / Listings\*

- UL/cUL Listed
- UL Damp Rated
- UL 924
- NEC

#### Mounting Options

- Universal Mount Pattern Back Plate Knockout
- Plate Knockout



\*Varies by fixture configuration



# Exterior LED Lighting Solutions



PG 42

### AREA LIGHTS

Ideal for large, open outdoor areas that require wide coverage. Several light distribution types are available to ensure proper distribution of light.



PG 43

### WALLPACKS

Mounted on vertical surfaces, such as building exteriors or in parking garage structures, wallpack LED fixtures increase safety and security of pedestrians.



PG 45

### CANOPY LIGHTS

Surface-mounted fixture for semi-enclosed outdoor areas.



PG 46

### FLOOD LIGHTS

Used to increase visibility of building signage and areas that need directional uplighting.

# LED AREA LIGHT

ISON® LED AREA LIGHT HIGH PERFORMANCE

## IAHPI SPECIFICATIONS

### Fixture Sizes

- 3 Fixture Sizes Available

### Lumen Range / LPW

- 13,000 to 63,000 Lumens, up to 172 LPW

### Factory Installed Features and Options

- 120v-277v and 277v-480v
- 80 CRI; 3000K, 4000K, or 5000K
- 3 Light Distribution Types
- Bronze Color Standard. White and Black available.
- 10kV/5kA Surge Protection Standard
- Factory-Installed, Optional 7-pin Photocell Receptacle for Field Installation of Photocell

### Field Installed Options

- Light Shield Options
- Control and Sensor Options
- Photocell 120v-277v, 347v, and 480v

### Control Types Available

- IP66 Rated Bluetooth Remote Programmable

### Certifications / Listings\*

- Dark Sky Compliant
- DLC® Listed Premium
- IK10 Rated
- IP66
- IP67
- cULus Certified
- UL Wet Rated
- Meets Title 24 Compliancy

### Mounting Options

- Yoke
- Trunnion
- Adjustable Arm
- Universal Pole Mount
- Slip-fitter
- Adjustable
- Wall Mount
- Slide & Lock Mount

\*Varies by fixture configuration

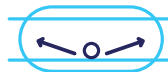
Precision engineered lens made of optical-grade polycarbonate for maximum light intensity and high efficacy

Tool-less access to electrical components for field maintenance and installation

Anti-corrosion stainless steel hardware



### Type III, IV, and Type V light distribution



#### TYPE III

Perimeter parking areas, parking lots, and roadways



#### TYPE IV

Perimeter parking areas, and parking lots



#### TYPE V

Intersections, parking lots, and center roadways

# LED WALLPACK

## HARRIS LUMEN SELECT WALLPACK SEMI CUTOFF, GEN 2

### LSWS2 SPECIFICATIONS

#### Fixture Sizes

- 1 Fixture Size Available



#### Lumen Range / LPW

- 3,000 to 19,000 Lumens, up to 162 LPW
- Each lumen package allows for field adjustment of lumen output



#### Factory Installed Features and Options

- 120v-277v
- 80 CRI; Field Adjustable CCT from 3000K, 4000K, and 5000K
- Bronze Color Standard
- 10kV/5kA Surge Protection Standard
- Battery Backup Available

#### Field Installed Options

- Light Shield Options
- Sensor Options
- Wire Guard Available
- Battery Backup Kit

#### Control Types Available

- Integrated Photocell Standard
- Field Installed Control Options

#### Certifications / Listings\*

- DLC® Listed Premium
- IP65
- cULus Certified
- UL Wet Rated
- Field Adjustable Wattage/Light Output and CCT

#### Mounting Options

- Back-plated design with template to mount directly over a standard recessed junction box for surface mounting

Accessible dip switches from the outside allow the user to select CCT and lumen output in the field

Die-cast aluminum housing with powder coat finish for harsh outdoor environments



Heat and impact resistant borosilicate glass lens

\*Varies by fixture configuration

# LED WALLPACK

## HARRIS LUMEN SELECT WALLPACK FULL CUTOFF, GEN 2

### LSWF2 SPECIFICATIONS

#### Fixture Sizes

- 2 Fixture Sizes Available



#### Lumen Range / LPW

- 3,000 to 19,000 Lumens, up to 165 LPW
- Each lumen package allows for field adjustment of lumen output



#### Factory Installed Features and Options

- 120v-277v
- 80 CRI; Field Adjustable CCT from 3000K, 4000K, and 5000K
- Bronze Color Standard
- Control Ready Fixture Base for Easy Sensor Installation
- 10kV/5kA Surge Protection Standard
- Battery Backup Available

#### Field Installed Options

- Control Options
- Battery Backup Kit



#### Control Types Available

- Integrated Photocell Standard
- Control ready design allows for fast and easy installation of sensors in the field

#### Certifications / Listings\*

- Dark Sky Compliant
- DLC® Listed Premium
- IP65
- cULus Certified
- UL Wet Rated
- Field Adjustable Wattage/Light Output and CCT

#### Mounting Options

- Back-plated design with template to mount directly over a standard recessed junction box for surface mounting



\*Varies by fixture configuration

# LED CANOPY

## HARRIS LUMEN SELECT CANOPY SQUARE

### LSCS1 SPECIFICATIONS

#### Fixture Sizes

- 2 Fixture Sizes Available

#### Lumen Range / LPW

- 4,000 to 12,000 Lumens, up to 150 LPW
- Each lumen package allows for field adjustment of lumen output

#### Factory Installed Features and Options

- 120v-347v
- 70 CRI; Field Adjustable CCT from 3000K, 4000K, or 5000K
- Bronze Color Standard. White and Black available.
- 10kV/5kA Surge Protection Standard

#### Control Types Available

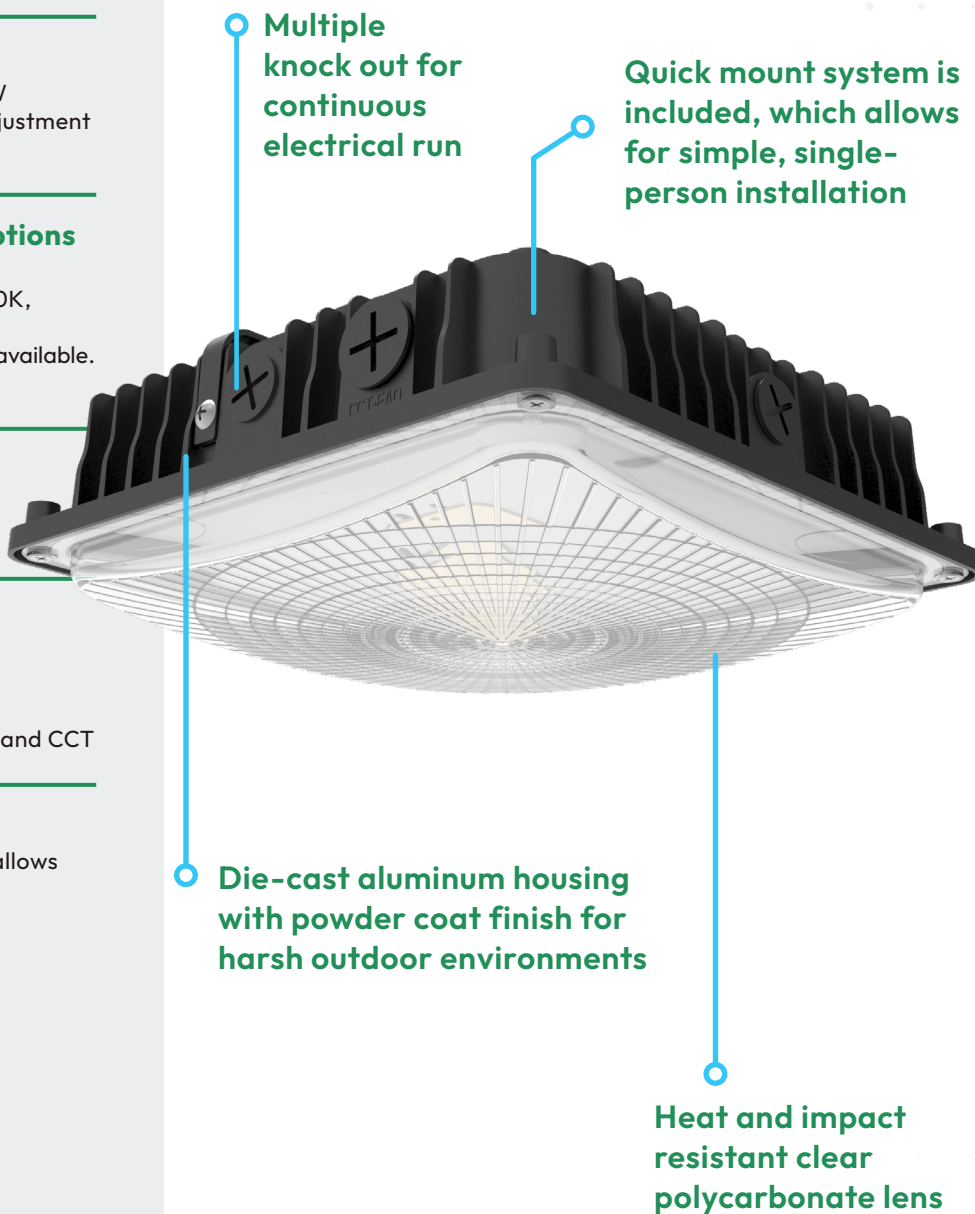
- Microwave Sensor with Remote Control
- Photocell Option

#### Certifications / Listings\*

- DLC® Listed Premium
- cULus Certified
- UL Wet Rated
- Field Adjustable Wattage/Light Output and CCT

#### Mounting Options

- Quick mount system is included, which allows for simple, single-person installation



Multiple knock out for continuous electrical run

Quick mount system is included, which allows for simple, single-person installation

Die-cast aluminum housing with powder coat finish for harsh outdoor environments

Heat and impact resistant clear polycarbonate lens

\*Varies by fixture configuration

# LED FLOOD LIGHT

## HARRIS LED ARCHITECTURAL FLOOD LIGHT, GEN 4

### FLGA4 SPECIFICATIONS

#### Fixture Sizes

- 3 Fixture Housing Sizes

#### Lumen Range / LPW

- 2,000 to 21,000 Lumens, up to 173 LPW
- Each fixture model allows for field adjustment of lumen output

#### Factory Installed Features and Options

- 120-277V
- 80 CRI; Field Adjustable CCT from 3000K, 4000K, and 5000K
- Bronze Housing
- Clear Tempered Glass Lens
- Stainless Steel Hardware
- Photocell

#### Control Types Available

- Dusk-to-Dawn Photocell Standard

#### Certifications / Listings

- cULus Certified
- UL Wet Rated
- IP65 Rated

#### Mounting Options

- Pre-installed Knuckle Mount for small and medium housings
- Pre-installed Slipfitter for large housing
- Yoke Mounting Option

Die-cast aluminum housing, stainless steel hardware and glass lens construction to withstand outdoor environments

Accessible dip switches allow the user to select between 3 CCT and 3 lumen outputs in the field



High-performance optics offer NEMA Type 7Hx7V

Integrated standard dusk-dawn photocell provides automated control and maximizes savings. Accessible switch allows it to be turned ON or OFF

# Lighting Controls

Integrate fixtures with intelligent lighting controls to increase effectiveness and energy savings.

## BENEFITS OF LED EXTERIOR LIGHTING CONTROLS



### Increased Energy Savings

Controls allow for programmable time settings or motion sensors that enable users to light a space only when it's occupied, decreasing energy costs.



### Better Security and Improved Safety

Lights triggered by security system-connected controls help deter crime and alert property managers to activity where occupancy isn't expected or allowed.



### Lighting Pollution Mitigation

LED fixtures combined with controls allow for less light pollution. Orion offers a variety of Dark Sky compliant products that eliminate the threat to local nighttime environments.

## LED EXTERIOR LIGHTING CONTROL TECHNOLOGY TYPES



### PHOTOCELL SENSOR

Photocell sensors automatically adjust to surrounding ambient light levels triggering exterior lights to turn on and off - regularly activating at sunset and dawn.



### MICROWAVE SENSOR

Consistently sending out high-frequency radio waves at 360 degrees, microwave sensors identify changes in return waves to detect movement and are particularly effective for large coverage areas. Users can program microwave sensors in the field to their preferred time a light should stay on when triggered.



### PASSIVE INFRARED (PIR) SENSOR

A PIR sensor measures infrared light radiating from objects in its field of view. It is commonly used to identify the presence of people for increased security.

# Fluorescent Lighting Bans

The global and U.S. initiatives to phase out fluorescent lighting are driven by a growing need to reduce energy costs, minimize mercury pollution, and lower greenhouse gas emissions.

This shift is not just about environmental responsibility— it's also about embracing LED lighting solutions that offer superior efficiency and quality.

LEDs represent the future of lighting for homes and businesses. These advanced alternatives to fluorescents provide not only better light quality but also significant savings in energy and maintenance costs. As we transition to a more sustainable future, LEDs stand out as the safer, more efficient choice for illuminating our spaces.

## Key Reasons Fluorescent Lighting Is Becoming Non-Compliant

	Fluorescents	Orion LEDs
Energy Efficiency	Convert only <b>20-25%</b> of energy into light, with the rest lost to heat and unwanted light dispersion.	Convert up to <b>95%</b> of energy into light, with no heat produced and precise light distribution to target areas.
Lifespan	Last only <b>15,000+</b> hours	Last <b>100,000+</b> hours
Environmental Safety	Contain hazardous mercury	Do not contain any mercury
Light Quality	Provide poor coloring rendering, making colors appear washed out	Deliver superior color rendering and consistent light output, enhancing both safety and aesthetics.
Cost Savings	Consume more energy, resulting in higher energy bills and increased maintenance costs due to frequent replacements and downtime.	Reduce energy use by <b>30-40%</b> , leading to lower energy bills and decreased maintenance costs with minimal downtime.



orion™

[orionlighting.com](http://orionlighting.com) | 1.800.660.9340

© 2026 Orion Energy Systems, Inc. All right reserved. The Orion logo, ISON®, TritonPro™, and Apollo® are trademarks of Orion Energy Systems. All other trademarks are property of their respective owners.

