



ORION WILL CHANGE THE WAY YOU
THINK ABOUT A LIGHTING COMPANY.

CASE STUDY

LOGISTICS

Orion's LED high bay fixtures are designed to provide light where it's needed, a safe working environment for employees, while saving operating and maintenance costs.

WHY ORION



LOWER COST INSTALL

- Modular, plug and play design
- Lower overall labor costs
- Install more fixtures in less time



2-3 WEEK SHIP

- Quick ship, 10 days
- Overnight shipment of additional materials



CLEAN JOB-SITE MANAGEMENT

- Fixtures in trays
- Packaging doubles for recycling
- No need for a dumpster
- Debris-free install



TRUSTED AMERICAN PARTNER

- Clear warranties with excellent coverage
- Quality manufacturing base with domestic and international partners
- 40 years retrofit experience

From the very first handshake to the final fixture installed, our energy is the difference we bring to every retrofit. Ingenuity guides us to new solutions. Dedication helps you at every step. And our products illuminate your world in ways you might not have imagined.

VISION

Orion will change the way you think about a commercial and industrial lighting company. Full service offerings, friendly and competent staff, an unexpected customer experience, and the best performance around; giving you a solution that will make you a hero in your organization.

MISSION

Lead the transformation of commercial and industrial facilities to solid state LED lighting technology and drive financial, environmental, and workspace benefits, while dominating the building retrofit market by providing more profit for the installer and more value for the end user.

VALUE

ALLY IN ACCOUNTABILITY

EXPERTISE

Our relationships go beyond shipping you the latest fixture. Your goals become our goals, which means we share responsibility to help you keep your promises and make your project successful.

PRACTICAL INGENUITY

PRODUCT

When you've been on the job site or up on the lift, you build in-the-trenches know-how. That expertise inspires more creative products that maximize real-world performance for your lighting investment.

UNCOMMON DEDICATION

SERVICE

Our customers tell us we have more capable teams that deliver results, not just on paper, but in the day-to-day work of the people we serve. Some say it's our Midwestern roots; we think it's our energy.

orion | Market Overview – Logistics and Warehousing

Effective lighting for productivity, safety and accuracy

OVERVIEW

Whether you operate a logistics facility, Freight Company, or a distribution center, your facility has unique lighting needs, and rather than treat your facility like any other industrial space, Orion has developed fixtures to specifically meet those needs. Our fixtures are designed to maximize both the light delivered to your facility's floor and the light delivered to your racking. By optimizing both the light in your aisles and on your storage racks, our lights will help improve workplace safety and your team's picking accuracy and efficiency.

PROJECT BENEFITS

- Industry leading fixture performance that allows you to use fewer fixtures to meet your lighting needs.
- Fixtures that maximize light levels both in your aisles and on your racks.
- Reduce operating costs by reducing your energy consumption and usage.
- Reduce maintenance costs with some of the longest lasting fixtures on the market.
- Spend less time repairing fixtures and replacing burnt out lamps.
- Reduce OSHA/waste concerns by eliminating need for fluorescent lamp disposal.
- Reduce facility disruption with fixtures that are lightweight and easy to install.
- Improve worker productivity, performance and morale by improving lighting.
- Optimize performance by integrating your fixtures with most commercially available control technologies.

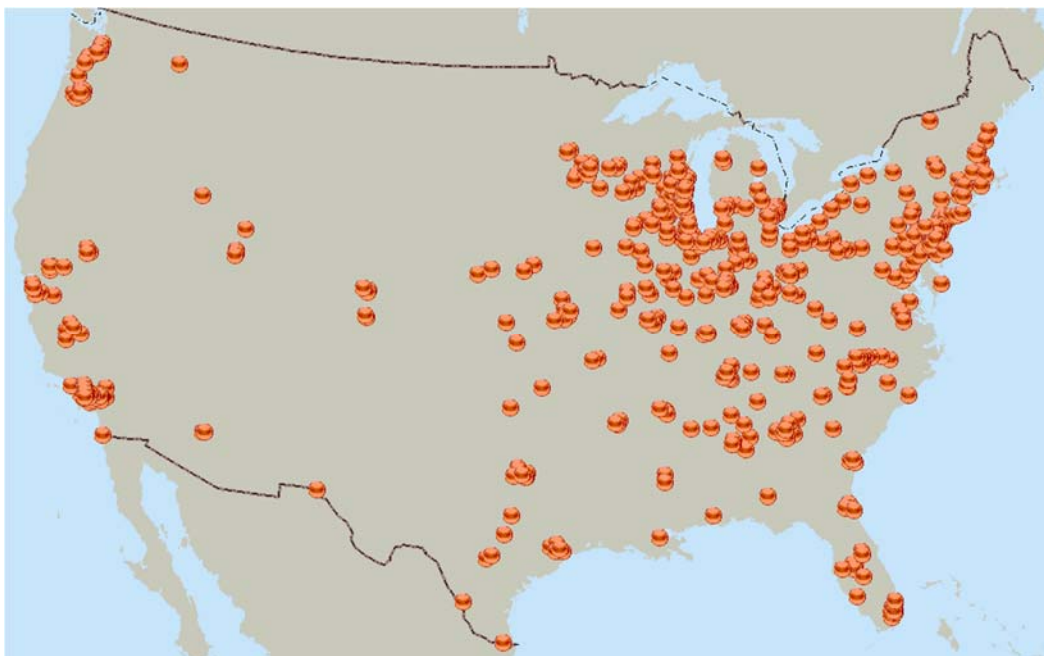


Before



After

As of March 31, 2016, Orion has completed over 750 projects with 465 customers in the Logistics and Warehousing market. The following map shows displays projects in contiguous United States.



Orion Introduces Next Generation of LED Industrial Light Fixtures

Published on October 9, 2015 at 4:09 AM

Written by AZoOptics

Oct 9 2015

Orion Energy Systems, Inc., a leading designer and manufacturer of high-performance, energy-efficient retrofit lighting platforms, today announced its next generation of Orion LED industrial light fixtures, now the highest-performing high bay suite in the market.



Orion's patent-pending ISON™ LED High Bay sets a new standard for industrial lighting fixtures, delivering best in class performance at up to 179 lumens per watt and lowest 10-year total cost of ownership.

The patent-pending ISON™ LED High Bay sets a new standard, delivering best in class performance at up to 179 lumens per watt and lowest 10-year total cost of ownership. The APOLLO® LED High Bay offers a large variety of options and up to 148 lumens per watt. For high performance in cost-conscious applications, the HARRIS LED High Bay also delivers up to 148 lumens per watt and the lowest up front cost in the suite.

This launch also introduces a new, modular lighting platform with hundreds of options that plug and play with standard electrical connections. The fixtures are upgradeable and interchangeable, allowing maintenance crews to meet changing light distribution requirements, such as moving from an open area to aisle lighting, or from high bay to low bay or even retail applications by adding a lens. By simply turning off the power to the luminaire, internal teams can use quick attachments to easily switch out the light

engine panels.

Other features include:

- Groundbreaking thermal management that reduces the operating temperature to enhance the performance.
- High-performing LED chips and drivers paired with cooler operating luminaires for peak performance.
- Superior fixture designs for maximum light output deliver light where it is most needed.
- Lightweight body to reduce ceiling grid load, install faster with less impact on facility operations, and ship in less packaging to streamline installation.
- Greater potential for wattage reduction rebates, since these products have higher wattage savings than competitive offerings. The savings will particularly benefit facilities in states with high electric rates including California, Hawaii, Massachusetts, New Jersey, and New York.

In 2001, the company's original industrial fixtures made waves earning numerous patents, awards, and the trust of thousands of facilities, including almost half of the Fortune 500, for its fast payback. Today a typical facility installing the ISON™ LED High Bay would save over \$100,000 a year, and over \$1.15 million in the next decade over the legacy, inefficient lighting found in the majority of industrial applications.

“Orion's latest products build on the upgradeability we designed into prior generations over our twenty-year history in industrial illumination. It demonstrates Orion's commitment to our customers' capital dollars as the only lighting company that provides a built-in upgrade path. Technology will inevitably evolve and having a modular platform will save them money,” said John Scribante, Chief Executive Officer of Orion Energy Systems. “With this launch we not only best the competition in lumens per watt and unprecedented performance backed by an energy savings guarantee, we also expand the horizon of what can be achieved with LED technology today, creating a new, upgradeable platform for how light will be delivered tomorrow.”

Source: <http://www.orionlighting.com/>

ENERGY MANAGER TODAY

[Home](#) [News](#) [Columns](#) [Videos](#) [Webinars](#) [White Papers](#)[Energy Manager Jobs](#)[About](#) [Advertise](#) [Privacy](#) [Awards](#) [Subscribe](#)

Search Energy Manager Today

Search

[POLICY](#) [PROCUREMENT](#) [MONITORING](#) [CONSERVATION](#) [ON-SITE ENERGY](#) [GRID](#) [BUILDING SYSTEMS](#)[Home](#) / [Building Systems](#) / Orion Introduces High-Performing High Bays

Orion Introduces High-Performing High Bays

October 12, 2015 By [Karen Henry](#)

Orion Energy Systems

has introduced a new suite of high bay LED industrial light fixtures. The ISON LED High Bay delivers 179 lumens per watt and a 10-year total cost of ownership. The APOLLO LED High Bay offers up to 148 lumens per watt, and the HARRIS LED High Bay also delivers up to 148 lumens per watt and the lowest up-front cost in the suite.

The fixtures are upgradeable and interchangeable, allowing maintenance crews to

meet changing light distribution requirements, such as moving from an open area to aisle lighting, or from high bay to low bay or even retail applications by adding a lens. Internal teams can use quick attachments to switch out the light engine panels by turning off the power to the luminaire.

Other features include:

- Thermal management.
- High-performing LED chips and drivers paired with cooler operating luminaires.
- Fixture designs that allow for maximum light output.
- Lightweight body.
- Greater potential for wattage reduction rebates.

According to the company, a typical facility installing the ISON LED High Bay would save more than \$100,000 a year and more than \$1.15 million in the next decade over the majority of legacy lighting systems.

Related:



Leave a reply

Comment

NEWSLETTER SIGNUP

Join 100,000+ subscribers who gain a competitive advantage with our news and analysis.

Select the newsletters that interest you:

- ☒ Energy Manager Today Newsletter (Daily)
☐ Retail Energy Buyer Newsletter (Weekly)
☐ Environmental Leader Newsletter (Daily)
☐ Recycling & Waste Reduction (Weekly)

Your work email

Subscribe

NEW Podcast Series
How to Buy Energy Like a Pro

Listen Now

Headlines [3/25/2016](#) [3/24/2016](#) [3/23/2016](#)[Navigator: Commercial and Industrial Energy Storage Market to Hit \\$10.8B in 2025](#)[Orlando Considers Building Water, Energy Use Ratings](#)[Big Job Gains in Energy Efficiency Sectors](#)[Reliability Is Driver for Atlantic City Electric Rate Adjustment](#)[District Court Dismisses \\$50M Class Action vs. Starion Energy](#)[IECA Urges Congress to Extend CHP Business Investment Tax Credit](#)

Videos

USF Holland Selects Orion Lighting as Standard for its 53 Cross-Dock Terminals

 www.businesswire.com/news/home/20151123005371/en/USF-Holland-Selects-Orion-Lighting-Standard-53

MANITOWOC, Wis.--(BUSINESS WIRE)--When USF Holland sought more energy-efficient lighting for its 53 terminals, it chose **Orion Energy Systems, Inc. (NASDAQ:OESX)**, a leading designer and manufacturer of high-performance, energy-efficient retrofit lighting platforms. The partnership with USF Holland solidifies Orion's position as the leading expert in lighting solutions for the freight industry, having delivered improvements in safety, productivity and energy savings for 10 of the top 15 largest firms.

USF Holland Properties Manager Adam Rowe had previously selected Orion fixtures for several retrofit projects while employed at another national freight carrier. Given the strong return on investment, superior light quality and excellent customer service he experienced on those projects, Rowe again sought out Orion in his new role at USF Holland, the nation's largest regional freight carrier operating in 15 Midwestern states.

"When I joined Holland, I definitely saw the opportunity in our facilities that we could easily have a great return, not only in saving money, but also ensuring the safety of our employees and doing our part for the environment. We all need lights, so why not put the highest-efficiency lights in your facility? At USF Holland, that means Orion," said Adam Rowe, Properties Manager, USF Holland.

To date, USF Holland has completed lighting upgrade projects at a dozen terminal sites. In just a few months, the trucking and logistics firm reduced its energy consumption by more than 30 percent and estimates it will save at least \$330,000 annually.

"Our partnership with USF Holland is a great example of how Orion's deep knowledge of the freight industry influences product designed specifically for these types of transportation environments, as well as shipping and staging to maximize ROI – in this case one third of a million dollars of energy savings already reinvested back into the business," said John Scribante, Chief Executive Officer, Orion Energy Systems. "Orion has earned a reputation in the freight industry for fast delivery and responsive, reliable service, and that track record makes us a great match for these companies who share the same expectations from their own customers. We look forward to continuing our partnership to take more cost out of these buildings, and at the same time provide improvements in energy savings, safety and productivity which will serve the company and its employees for many years to come."

Together, USF Holland and Orion analyzed not only the energy savings from upgrading to new fixtures, but also determined which terminals to target and the right mix of products to use to maximize Holland's return on investment. Rowe selected Detroit for the first project, and Holland officers immediately gave positive feedback on the new lighting. Eleven terminals have now been upgraded to Orion lighting, featuring a combination of LED Troffer Retrofit fixtures for commercial offices, enclosed fixtures on docks, plus APOLLO® and ISON™ LED Exterior fixtures and controls.

"Before Orion, many of our sites had metal halide and high pressure sodium fixtures that made everything look dingy and yellow," continued Rowe. "We have had a transformation in safety and morale since the Orion installation. The improvement of the overall quality and illumination of the docks and offices really brightened up the place. Our people comment on how it feels like we are bringing more natural light into the warehouses."

In addition to the lighting retrofit projects, USF Holland also constructed a new 48,790 square-foot terminal on 23 acres in Grand Rapids, Michigan, where a combination of Orion LED and fluorescent fixtures were installed throughout the 110 dock door facility and an additional 16,000 square-foot maintenance building.

About Holland

Holland has long been recognized for delivering the most next-day service lanes in its territory and annually records one of the lowest claim ratios in the industry. Founded in Holland, Mich., in 1929, Holland provides industry leading, on-time reliability for less-than-truckload shipments in the central and southeastern United States and in eastern Canada. Holland, recognized by Logistics Management magazine with its 2012 Quest for Quality award for 27 consecutive years, was honored for performance excellence in 2012 in the Midwest/North Central Regional LTL Carriers and Expedited Motor Carriers categories. For more information, visit hollandregional.com. Holland is a subsidiary of YRC Worldwide.

About Orion Energy Systems

Orion is leading the transformation of commercial and industrial buildings with state-of-the-art energy efficient lighting systems and retrofit lighting solutions. Orion manufactures and markets a cutting edge portfolio of products encompassing LED Solid-State Lighting and high intensity fluorescent lighting. Many of Orion's 100+ granted patents and pending patent applications relate to lighting systems that provide exceptional optical and thermal performance, which drive financial, environmental, and work-space benefits for a wide variety of customers in the retrofit markets.

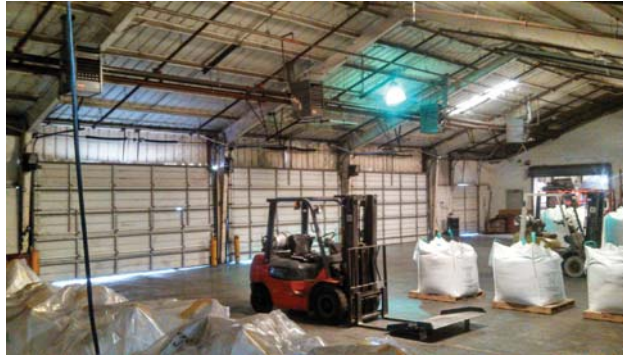
Little Rock Warehouse

Little Rock, AR

Replaced legacy lighting system consisting of metal halide fixtures with Orion's LED fixtures.

Project Metrics

Annual Cost Savings	\$20,135
Annual Kilowatt Hour Reduction	261,500
Load Reduction	86 kW
Annual Carbon Dioxide Reduction	159 Tons



Before



After



Chetak Network Edison, NJ

Project Scope

Chetak NY moved into an existing bulk warehouse with a legacy lighting system consisting of 1,000-watt High Intensity Discharge fixtures. They renovated the facility to a fully racked dry storage area and freezer box. The new lighting system consists of Orion's Compact Modular T8 High Bay fixtures with ArmorLite High Lumen T8 Lamps and Full-Range Dimming ballasts coupled with Orion's Intelite® wireless controls in the Dry Space. The freezer box utilizes Orion's LED High Bay fixtures with standard motion controls in the freezer space.

Project Economics

Displaced Energy:	291,559 kWh
Displaced Capacity:	42.06 kW
Annual Cost Reduction:	\$46,649
Light Level Improvement:	N/A

Environmental Impact

Carbon Dioxide Emissions Displaced:	177 tons/year
Acres of Trees Planted (Equivalency):	53 Acres



Before – HID Fixtures



After – LED Fixtures



"The new lighting is doing well. Illumination is good, as expected, and there have been no issues."

Dave Korash – Maintenance Supervisor

A. Duie Pyle, Inc. – Westfield, MA

Project Scope

Replace legacy exterior lighting system consisting of High Pressure Sodium fixtures and Wall Packs with Orion's T5 Fluorescent Exterior Fixtures and Wall Packs.

Project Economics

Displaced Energy: 45,417 kWh
 Displaced Capacity: 11.85 kW
 Annual Cost Reduction: \$6,358
 Light Level Improvement: Improved Color Quality

Environmental Impact

Carbon Dioxide Emissions Displaced: 28 tons/year
 Acres of Trees Planted (Equivalency): 8 Acres



Before (with one Orion test fixture)



After



Ryder Supply Chain Solutions Milwaukee, WI

Total Logistics Control

Project Scope

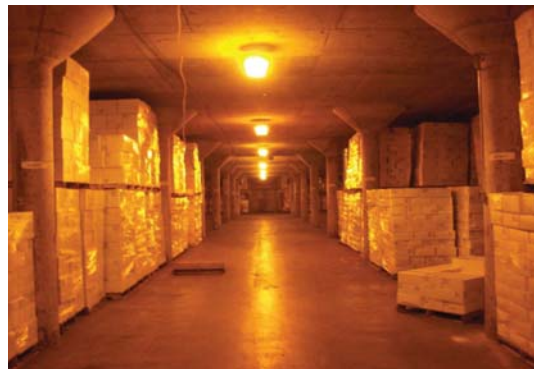
Replace legacy lighting system consisting of High Intensity Discharge fixtures with Orion's T8 Fluorescent Compact Modular fixtures and standard motion controls.

Project Economics

Displaced Energy: 316,403 kWh
 Displaced Capacity: 67.9 kW
 Annual Cost Reduction: \$24,403
 Light Level Improvement: N/A

Environmental Impact

Carbon Dioxide Emissions Displaced: 205 tons/year
 Acres of Trees Planted (Equivalency): 58 Acres



Before



After



Ozburn-Hessey Logistics

Edwardsville, IL

Replaced legacy lighting system consisting of 400 Watt HPS fixtures with Orion's T8 4-Lamp Open Highbay fixtures and standard motion control.

Project Metrics

Annual Cost Savings	\$96,971
Annual Kilowatt Hour Reduction	1,212,146
Load Reduction	237 kW
Annual Carbon Dioxide Reduction	737 Tons

"The new, brighter white light exceeded our expectations immediately. We are very pleased with IFS (Innovative Facilities Solutions)."

– Aaron Kramer
Director of Operations



Before



After



L&W Supply

Chicago, IL

Replaced legacy lighting system consisting of HID lights and T12 fixtures with Orion's T8 Low Bay fixtures with conversion kits and standard motion controls.

Project Metrics

Annual Cost Savings	\$2,089
Annual Kilowatt Hour Reduction	20,743
Load Reduction	6.2 kW
Annual Carbon Dioxide Reduction	13 Tons



Before



After

ORION | Case Studies – Logistics and Warehousing



G&D Integrated

Peoria, IL

Replaced legacy lighting system consisting of T12 & T5 fixtures with Orion's T8 fluorescent Compact Modular fixtures.

Project Metrics

Annual Cost Savings	\$40,937
Annual Kilowatt Hour Reduction	650,864
Load Reduction	89.5 kW
Annual Carbon Dioxide Reduction	396 Tons

"We are very pleased with the performance of our new lighting system and we are looking forward to the energy savings."

– Betty Casey
Purchasing Manager



Before



After



Kulkoni

Houston, TX

Replaced legacy lighting system consisting of HID and T12 fixtures with Orion's T8 High Bay fixtures and retrofit kits.

Project Metrics

Annual Cost Savings	\$6,701
Annual Kilowatt Hour Reduction	64,688
Load Reduction	31.1 kW
Annual Carbon Dioxide Reduction	40 Tons



Before



After



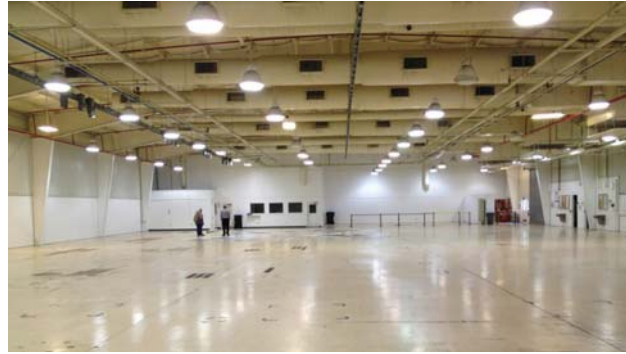
TE Connectivity

Tullahoma, TN

Replaced legacy lighting system consisting of metal halide fixtures with Orion's T8 fluorescent Compact Modular fixtures.

Project Metrics

Annual Cost Savings	\$26,828
Annual Kilowatt Hour Reduction	294,809
Load Reduction	33.7 kW
Annual Carbon Dioxide Reduction	179 Tons



Before



After



"I am hearing all positive comments on the new lights. I am happy that they will not start a fire! I am looking to seeing the actual saving on the electric bill."

Brian Jongetjes – Owner

Johns Disposal – Whitewater, WI

Project Scope

Replace legacy lighting system consisting of High Intensity Discharge fixtures with Orion's T8 Fluorescent Compact Modular High Bay fixtures.

Project Economics

Displaced Energy:	141,000 kWh
Displaced Capacity:	39.72 kW
Annual Cost Reduction:	\$15,509
Light Level Improvement:	N/A

Environmental Impact

Carbon Dioxide Emissions Displaced:	91 tons/year
Acres of Trees Planted (Equivalency):	26 Acres



Before



After



MG Design Associates Pleasant Prairie, WI

Project Scope

Replace legacy lighting system consisting of Metal Halide and with Orion's T8 Fluorescent and T5 Fluorescent Compact Modular High Bay fixtures with standard motion controls.

Project Economics

Displaced Energy:	172,023 kWh
Displaced Capacity:	47.6 kW
Annual Cost Reduction:	\$21,847
Light Level Improvement:	7.5% (33.0 to 35.5 avg. fc)

Environmental Impact

Carbon Dioxide Emissions Displaced:	105 tons/year
Acres of Trees Planted (Equivalency):	32 Acres



Before



After



Bridgeport Distribution, Inc.

Bridgeport Distribution Portland, OR

Project Scope

Replace legacy lighting system consisting of High Intensity Discharge, T12 Fluorescent, T8 Fluorescent and Incandescent fixtures with Orion's T8 Fluorescent Compact Modular High Bay, Retrofit Kit and Compact Fluorescent fixtures with standard motion control technologies.

Project Economics

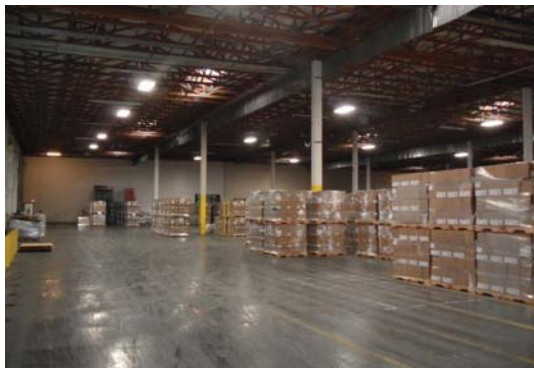
Displaced Energy:	50,625 kWh
Displaced Capacity:	11.41 kW
Annual Cost Reduction:	\$5,614
Light Level Improvement:	55.0% (15.0 to 23.3 avg. fc)

Environmental Impact

Carbon Dioxide Emissions Displaced:	33 tons/year
Acres of Trees Planted (Equivalency):	9 Acres



Before – 15.0 average foot-candles



After – 23.3 average foot-candles



Capitol Warehousing Windsor, WI

Project Scope

Replace legacy lighting system consisting of High Intensity Discharge and T12 HO fixtures with Orion's T8 Fluorescent Compact Modular High Bay fixtures.

Project Economics

Displaced Energy:	41,436 kWh
Displaced Capacity:	16.9 kW
Annual Cost Reduction:	\$3,480
Light Level Improvement:	N/A

Environmental Impact

Carbon Dioxide Emissions Displaced:	27 tons/year
Acres of Trees Planted (Equivalency):	8 Acres



Before



After



Colliers International Management - Atlanta

Lawrenceville, GA

Replaced legacy lighting system consisting of metal halide fixtures with Orion's T5P fluorescent Compact Modular fixtures and standard motion controls.

Project Metrics

Annual Cost Savings	\$62,601
Annual Kilowatt Hour Reduction	470,689
Load Reduction	111 kW
Annual Carbon Dioxide Reduction	286 Tons



Before



After



Lawrence National Rochester, MN

Project Scope

Replace legacy lighting system consisting of Metal Halide Fixtures with Orion's T8 Compact Modular High Bay Fixtures.

Project Economics

Displaced Energy:	7,199 kWh
Displaced Capacity:	2.23 kW
Annual Cost Reduction:	\$792
Light Level Improvement:	N/A

Environmental Impact

Carbon Dioxide Emissions Displaced:	5 tons/year
Acres of Trees Planted (Equivalency):	1 Acre



Before



After



KATOEN NATIE

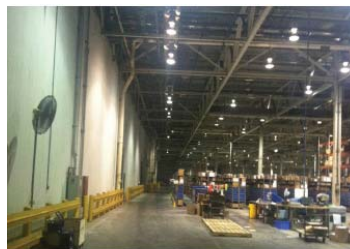
Katoen Natie

Norfolk, VA

Replaced legacy lighting system consisting of 400w HID fixtures with Orion's T8 fluorescent Compact Modular fixtures with independent motion control.

Project Metrics

Annual Cost Savings	\$101,931
Annual Kilowatt Hour Reduction	1,072,962
Load Reduction	302.4 kW
Annual Carbon Dioxide Reduction	653 Tons



Before



After



Before



After

Customer	Quantity
K Line Logistics	1
A C Warehouse lunc	1
A. Duie Pyle Inc.	4
A1 Outdoor Storage	1
AAA Cooper Transportation	2
ABF Freight Systems Inc.	3
AC Warehouse	1
Acme Delivery Services	1
ACR Supply	1
ADI Logistics	1
Advanced Disposal	1
Advanced Waste Services, Inc.	4
Air Products Equipment Co.	1
Alaska Tanker Company	1
Alaska Traffic Consultants	1
Alexanders Mobility Services	1
All Truck Transportation	1
Allan Company	4
Allied Industrial Equipment	1
AllSize Storage	1
Alton Delivery Service Co	1
AMB Distribution Center	1
American Air	1
American Pipe	1
Amerifreight	1
AMPAC Forwarding	1
Anda Distribution	1
Anda Incorporated	1
Applied Industrial Technologies	1
Aqua Gulf Transport	1
ASB Fortune	1
Aspen Distribution III	1
ATS Trucking	1
Averitt Express	4
Badger State Fruit Processing, Inc.	1
Badger Tire & Wheel	1
Banjo Corp	1
Baron Styles, Inc.	1
Baron USA, LLC	1
Barrett Distribution	1
Bear Creek Warehouse	1
BelknapWhiteAlcco	2
Benteler Group	1
Birk Transfer	1
BKK Enterprises	1
Bldg L	1
Blue Ox Logistics	1
BMS	1
BPDC	1
Bramar Dist. & Warehousing Inc	1
Brandeis Machinery	1
Brenntag	6
Bridgeport Distribution	1
Brimich Logistics and Assembly	1
Buckeye Diamond Logistics	1
C & H Distributors	1
C.M.I Freight Trans	1

Customer	Quantity
Cabinet Giant	1
Cabinets To Go	1
Campbellsport Building Supply	1
Canada Colors & Chemicals LLC	1
Canal Street Self Storage	1
Canpa Global Logistics	1
Capitol Warehousing	1
Carey Moving & Storage	1
Carib Sales, Inc.	1
Carolina Fluid Components	1
Carpenter Bros. Moving and Storage	1
Casey Moving and Storage	1
Cashco Distributors Inc.	1
Cash-Wa Distributing	1
CDS Logistics	1
CEI Logistic Services	1
Central Power Distributors	1
Central States Distriubtion Services	2
Central Storage and Warehouse Co.	1
Central Transport	35
Centrex	1
Century Commercial Builders Corporation	1
CH Coakley	1
Chainworks, Inc	1
Champion Logistics	1
Chetak Distributors	1
Chetak New York	1
Chippewa Valley Warehouse Operations, Inc.	1
City Cargo	1
Clover Systems	1
Coakley Brothers	1
Coaster Co. of North America	2
College Oaks Building A	1
Combined Warehouse LLC	2
Commercial Warehousing	3
Composites One	1
Concord Global Trading	2
Concord Global Trading	1
Constitution Warehouse	1
Contractor Steel	1
Con-Way Freights	14
Cook Brothers, Inc.	1
Cornerstone Building A	1
Cornerstone Building B	1
Cory Furniture	1
Coulee Region Enterprises	1
Crescent Park Distribution	2
Crossdock	1
Crossroad Distribution Center	1
Cunningham Supply Co	1
D & S Warehousing Inc	1
Darby Equipment	1
Dart Container Corporation	3
Dasco Supply	1
Dave Carter & Associates	1
Dayco Industries	1
Daylight Transport	1

Customer	Quantity
DB Schenker	2
DC Logistics	1
Dealer Service Warehouse (XL Parts)	1
Delta Logistics	1
Dependable Auto Shippers	1
Derby Industries, LLC	2
Deuce's Wild	1
Dey Distributing	1
DHL Global Forwarding	2
DI Supply Inc.	1
Dinnerbell Farms	1
Distribution 2000	1
Distributors Terminal Corp	1
Division Six Sports	1
Dorman Products	1
Dot Com Distribution	1
Double D Trucking	1
DSC Logistics	1
DSI	1
Dupuy	2
Dura Freight	1
DWS Logistics	1
E.E Schenck Co	1
East Coast Metal Distributors	1
East Sac Self Storage	1
Eastern Metal Supply	1
Echo Environmental Waverly, LLC	1
Ecklund Carriers Inc.	1
ECS&R	1
Elico Warehouse	1
Elm Global Logistics	1
EMCO Chemical Distributors	1
EMJ	1
EMK Metals	1
Ernst Trucking and Warehousing	1
Evans Distribution Systems	1
Excel Group	1
Exel Inc.	5
Expeditors International	2
Express Courier Service Inc.	1
Extra Self Storage	1
Fairrington Transportation	2
FC Felhaber and Company, Inc.	1
FCA Freight Car Rail Svcs	1
Federal/ Johnson Moving & Storage	1
Fedex (Express/Freight)	18
Finley Products, Inc.	1
First Supply Inc.	4
Flash Trucking	1
Fleet Distribution Centers	2
Forward Air, Inc.	1
Foster Caviness	1
FreezePak Logistics	2
Fresh Logistics LLC	1
Frontier Logistics	1
Frontier Servco FS	1
Froztec International Inc.	2

Customer	Quantity
G&D Transportation	1
G&L Enterprises	1
Garda Cash Logistics	1
Garden State Portable Storage	1
Gateway Warehouse	1
GELS	1
Genco Bldg G Crossroads	1
General Distributing Company	1
General Dynamics Corporation	1
General Wholesale	1
Global Equip. Co.	1
Global Logistics & Distribution LLC	1
Global Scrap Management	1
GMZ Inc.	1
GNJ Wholesale	1
Gold Crest Distributing	1
Grand Worldwide Logistics	1
GSS Storage Facility	1
GTS Solutions	1
Guardian Industries	1
Gummer Wholesale	1
Habegger	1
Hafen USA	1
Harbor Wholesale	1
Hardware Distributors, LTD	1
Harris Quality Trucking	1
Hayward Distributing	1
HBC Furniture	1
HD Supply Inc.	8
Hennes Services	1
Henry Petter Supply	1
Heritage Freight Warehousing	1
Hodell	1
Hoffman Transportation	1
Hogan Truck Leasing	1
Hogan Trucking	1
Holland Cold Storage	1
Holman Distribution Center	1
Hopewell Development Corporation	5
Horizon Lines Clerk	1
Hot Services	1
Howell's Motor Freight	1
Hudson Refrigerated Logistics	1
Hughes Supply Company	2
Ideal Safety Sales	1
IDG USA, LLC	1
Indianhead Warehouse Corporation	1
Insight Distribution	1
Interamerica Forwarding Company, Inc.	1
Interline Brands	1
International Cargo Marketing Consulting	1
Interstate Warehouse Services	1
Iron City Pipe	1
Iron Mountain	1
ISN	1
J&B Imports	1
J&R Products	1

Customer	Quantity
J.O. Galloup Co	2
Jaeckle Wholesale	1
JanTec, Inc	1
JBS Logistics	1
Jet Transportation	1
JG Kern Enterprises, Inc.	1
JGM Industrial Center, Inc	1
Jireh Custom Services	1
JLG Southwest Service Center	1
JMJ Munchkins	1
Johnston Supply	1
Jonas Indsutrial	1
Joseph T. Ryerson and Son, Inc.	2
K & M Warehouse	1
K.F. Express Inc.	1
Kamco Supply Corp.	2
Kane is Able, Inc.	2
Karthauser and Sons, Inc	1
Katoen Natie USA Inc.	3
Keefe Supply	1
Keller Supply	1
Ken Smith Auto Parts	1
Kenco Group Inc	2
Kenco	1
Kennicot Brothers	1
Kentucky Steel Center, Inc.	1
Keystone Automotive	2
Knight Transportation	2
Kreilkamp Trucking, Inc.	1
Kreilkamp Trucking, Inc.	1
Kuzman Forest Products, Inc	1
L&W Supply	1
LabSource	1
Lakeside Foods, Inc.	1
Land N Sea	1
Landis Logistics	1
Laura Land Co.	1
Layton Trucking	1
Le Sueur Warehouse	1
Leprino Foods	1
LeSaint Logistics	1
Linc Systems	1
Lindner Logistics, LLC	3
Little Rock Warehouse	1
Little Warehousing	1
Lon Muslof Distributing	1
Lone Star Pet	1
Lowe's FDC Mechanical	1
Lucca Freezer and Cold Storage	1
Lufthansa Cargo	1
MANITOU LIN TRANSPORT	1
Marten Transport	1
Master Drive	1
Master Wholesale and Vending Supply, Inc	1
Materials Transportation Company	1
Mayflower Transit	1
McCray Lumber & Millwork	2

Customer	Quantity
MCLEOD	1
Meador Warehousing & Distribution, Inc.	1
Meiko America	1
Melrose International LLC	1
Menlo Worldwide Logistics	2
Metric & Multistandard Components	1
Mh Valve	1
Mid-America Supply	1
Midway Wholesale	1
Midwest Fasteners	1
Midwest Steel & Service	1
Millis Transfer, Inc.	1
Mitek Corporation	1
MJD Trucking, Inc.	1
ModusLink Global Solutions	1
Morrelle Warehouse	1
Morris Material Handling	1
Mr. Bults, Inc.	1
MSC Distributing Inc.	1
MSC Industrial Direct Co.	1
MSC Industrial Supply	1
MSP Distribution	1
Murray's Warehousing, Inc.	1
Mygrant Glass	2
NACCO Materials Handling Group	1
NAN Distribution	1
National Auto Parts	1
National Autobody Parts	1
National Consolidated Services	1
National Distributing Co.	1
National Oak Distributors	1
Nationwide Magazine & Book	1
NCAL Supply Chain	1
Newport Cold Storage	1
Nexgen Building Supply	1
NFI Industries, Inc.	2
Nippon Express USA	1
Nishimoto Group	1
NNR Global Logistics USA	1
North Wood Flooring LLC	1
Northeast Asphalt, Inc.	1
Northeastern Supply	1
Northern Border In Transit	1
Nu Calgon	1
Olympic Distributors, Inc.	1
O'Malley Timber Products	1
On-Trac Shipping	1
Orgill Distribution Center	1
Ozburn-Hessey Logistics	18
Pacific Air Cargo	1
Pacific American Services	1
Pacific Logistics	1
Packer Fabricating, Inc.	1
Panalpina Bay F	1
Park & Co. Worldwide	1
Parts Canada Development Company	1
Parts Unlimited	1

Customer	Quantity
Patene Building Supplies Ltd.	1
Paul J. Schmidt Trucking	1
Peacock Engineering Company	1
Pegasus Auto Racing Supplies	1
Penn Corp	1
Penn Warehousing	1
Penske Truck Rentals	5
Permac Grand River Infrastructure	1
Phoenix Investors	7
Planes Moving & Storage Inc	4
Pollak Paper Distributors	1
Pool Corp	1
Poppe Automotive Warehouse, Inc.	1
Praxair Distribution	1
Primesource Building Products, Inc.	1
Project Transport	1
ProMax Automotive, Inc.	1
Promax Inc.	1
Purolator	1
PW Supply Co.	1
Qualitor, Inc.	1
Quality Books, Inc.	1
Quality Custom Distribution	1
R&L Carriers Inc.	20
Raymond Building Supply	1
Reddaway	2
Reeb Millwork Corporation	1
Reebie Storage & Moving	1
Rehrig Pacific Co.	12
Republic National Distributing	1
Retail Logistics, LLC	2
Revere Supply Co. Inc.	1
RGL Holdings, Inc.	2
Riechmann Transport	1
RMS Automotive Group	1
Roadrunner Transportation	1
Rock Paint Distributing	1
Ryder Integrated Logistics	6
Sac Val Janitorial Supply, Inc.	1
Sally Beauty Company Inc	1
Sammarco Electric Co.	2
Sandy Hill Building Supply	1
SB Specialty Metals LLC	1
SC Fuels	1
Schilling Supply Company	1
Schneider National, Inc.	16
Schwan's Logistics, LLC	1
Scott Distribution	1
Service One Transportation	1
SG Supply	1
Shamrock Corporation	1
Sharkey Transportation	2
Shaw's Wells Distribution Center	1
Shelby Horizons LTD	1
Shelter Distribution Inc	1
Shippers Highway Express	1
SJT Depot	1

Customer	Quantity
SMS Infocomm	1
South Mill Distriuting	1
Southern Metals Recycling	1
Space Center Distribution Chicago, Inc	1
Space Center Inc/LKQ LaPorte	1
Spartan Logistics	1
SRC Logistics	1
St. George Warehouse, Inc.	1
St. Louis Area Food Bank	1
Stock Building Supply	1
Sunlight Supply Inc.	1
Sun-Pacific Shipping, Inc.	1
Swift-Train	2
TCW	1
Temperature Equipment Company	1
The Distribution Center	1
The Hess Company, Inc.	1
The Hurt Co.	1
The Parts House	1
The Radford Company	1
The Schlueter Company	1
Thoroughbred Fulfillment	1
Tigard Distribution Center	1
TMS Logistics, Inc	1
Transparent Container	1
Transport Express	1
Transport Specialties Inc.	1
Tree of Life	2
Tropical Shipping	1
Truckshop USA	1
TS Tech	1
TS Tech Alabama LLC	1
TTX Company	1
TW Metals	2
U-Haul	8
Union Pacific Railroad	1
UPS Logistics/Supply Chain Solutions	23
US Auto Force	2
USF Holland, Inc.	13
UTI Worldwide	7
Van Brunt Logistics	1
Vancouver Warehouse & Dist	1
Verst Group Logistics	1
Warehouse Services, Inc.	2
Washington Floral Service	1
Wausau Supply	5
Weber Distribution	2
Western States Distributing, Inc.	1
Wharton Hardware and Supply	1
White Cap Construction Supplies, Inc.	1
Wholesale Direct Supply	1
Wible Lumber	1
Williams Tile & Marble Inc.	1
Wisconsin and Southern Railroad Company	1
Wisconsin Nationwide	2
WJ Casey	1
Wood Floor International	1

Customer	Quantity
Woodmill Products, Inc.	1
World Class Flowers	1
WOW Logistics	3

Customer	Quantity
WW Williams	1
XPO Logistics Supply Chain Inc.	2
YRC Worldwide, Inc.	7
Zollinger Commercial Warehouse	1

ISON™ LED HIGH BAY | HBIF2

- Industry leading efficiency with best in class performance
- Patent-pending unique modular design allows for ease of field maintenance and is upgradeable for performance enhancements
- Superior thermal management leads to longer life and enhanced performance
- Ideal for industrial, commercial and retail application
- Flexible platform to adjust to almost any application
- Durable, sleek, aluminum body with open area and aisle illumination options
- Various control options offered to gain additional energy savings
- Voltage: 120-277, 347, and 480v
- Rated Life: 150,000 hours



ISON™ LED HIGH BAY HIGH LUMEN | HBIF2

- Best in class "Lumen per Watt Performance" - up to 177 lpw
- Designed to replace traditional fluorescent or HID of 400, 750 and/or 1000 watt in heights above 40'
- Groundbreaking thermal management design reduces fixture operating temperature to enhance performance
- Wireless networking and remote control sensors
- Voltage: 120-277v, 347v and 480v
- Rated Life: 150,000 hours



APOLLO® LED HIGH BAY | HBAC2

- Future-proof, modular design allows for ease of field maintenance and is upgradeable for performance enhancements
- Feature rich, value oriented high performance high & low bay solution ideal for industrial, commercial, and retail applications
- Hundreds of options and accessories available, including emergency battery back up, integrated and wireless controls, aisle illumination package and more
- Easy-to-install, lightweight aluminum body design, reduces ceiling grid load, installs faster with minimal impact on operations
- Extensive list of features and fixture options
- Voltage: 120-277v, 347v, 480v
- Rated Life: 125,000 hours



HARRIS LED HIGH BAY | HBHC1

- Modular power pack is field replaceable for ease of fixture maintenance
- Well suited to meet high and low bay illumination requirements for industrial, commercial, and retail applications
- Plug and play end mounted control options available
- Optional aisle illumination performance package
- Voltage: 120-277v, 347v, 480v
- Rated Life: 100,000 hours



ISON™ LED LDR® TROFFER RETROFIT MODULAR | LDRM1

- Industries first Patented LED LDR® Troffer Retrofit contained within the doorframe
- Patent pending, future-proof, interchangeable light engine design delivers the benefit of replaceable LED lamps or tubes without the performance or safety risks
- Designed to retrofit existing 2'x2' and 2'x4' T8/T12 fluorescent troffers in as little as two minutes
- Ships completely assembled, which minimizes labor install and interruption in the workplace
- Several control options to include third party control solutions
- Voltage: 127-277v
- Rated Life: 125,000 hours



APOLLO® LED LDR® TROFFER RETROFIT | LDR F-SERIES 1'x4', 2'x2', 2'x4'

- Industries first Patented LED LDR® Troffer Retrofit contained within the doorframe
- Designed to retrofit almost all existing T8/T12 troffer
- One-piece, powder-coated white, light-weight enclosed aluminum body
- Designed to retrofit existing 1'x4', 2'x2' and 2'x4' T8/T12 fluorescent troffers in as little as two minutes
- Matte finish contour or flat panel lens
- Full range dimming driver
- Voltage: 120-277
- Rated Life: 125,000 hours



HARRIS LED LDR® TROFFER RETROFIT EDGE | LDRE1

- Industries first Patented LED LDR® Troffer Retrofit contained within the doorframe
- Designed to retrofit existing 2'x2' and 2'x4' T8/T12 fluorescent troffers with either prismatic lens or parabolic louvers
- Installs in as little as two minutes, which minimize workplace disruption
- Ships completely assembled, which minimizes cleanup and labor install
- Several control options to include third party control solutions
- Voltage: 127-277v
- Rated Life: 100,000 hours



APOLLO® LED SUSPENDED SLIMLINE SERIES | SPTS1

- Versatile slim design lends itself to many low bay, interior lighting applications
- Internal and External Driver options
- Suspended and surface mounting options
- Opaque matte lens aids in distribution of light and reduction of glare
- Voltage: 120-277v
- Rate life: 100,000 hours



APOLLO® LED VAPORTIGHT NARROW BODY SERIES | VTON1

- Ideal for commercial kitchens, breweries, under awnings, laundries, car washes, utility tunnels, and livestock containment buildings where the application requires a waterproof and/or dust proof fixture
- Bi-level, dual circuit option allows for high and low lumen light levels for safety
- UL Wet Location, IP66, IP67, High Pressure Washdown PSI1500, NEMA 4X Housing
- TVSS and Wet Location sensor options available
- Voltage: 120-277v
- Rated Life: 125,000 hours



APOLLO® LED VAPORTIGHT WIDE BODY SERIES | VTOD1

- Ideal for commercial kitchens, breweries, under awnings, car washes, utility tunnels, and livestock containment buildings where the application requires a waterproof and/or dust proof fixture
- Bi-level, dual circuit option allows for high and low lumen light levels for safety
- UL Wet Location, IP66, IP67, High Pressure Washdown PSI1500, NEMA 4X Housing
- TVSS and Wet Location sensor options available
- Voltage: 120-277v
- Rated Life: 125,000 hours



HARRIS LED VAPORTIGHT | xVT

- Industrial application, food service settings
- Outperforms in freezer and refrigerator settings
- Lightweight fiberglass body, Ribbed frosted acrylic lens
- Four and eight foot options
- Quick clean with high or low pressure wash
- Voltage: 120-277
- Rated Life: 50,000 hours
- IP65, IP67





ORION WILL CHANGE THE WAY YOU
THINK ABOUT A LIGHTING COMPANY.

WHY ORION

From the very first handshake to the final fixture installed, our energy is the difference we bring to every retrofit. Ingenuity guides us to new solutions. Dedication helps you at every step. And our products illuminate your world in ways you might not have imagined.

ALLY IN ACCOUNTABILITY

Our relationships go beyond shipping you the latest fixture. Your goals become our goals, which means we share responsibility to help you keep your promises and make your project successful.

PRACTICAL INGENUITY

When you've been on the job site or up on the lift, you build in-the-trenches know-how. That expertise inspires more creative products that maximize real-world performance for your lighting investment.

UNCOMMON DEDICATION

Our customers tell us we have more capable teams that deliver results, not just on paper, but in the day-to-day work of the people we serve. Some say it's our Midwestern roots; we think it's our energy.

LIGHT YEARS AHEAD®

2210 Woodland Drive
Manitowoc, WI 54220

800.660.9340 | 920.482.0520
orionlighting.com

©2016 Orion Energy Systems, Inc. All rights reserved. The Orion logo, ISON™, APOLLO®, HARRIS and Intelite® product names are registered trademarks of Orion Energy Systems. All other trademarks are the property of their respective owners.