

LMAR1

Applications

The ISON™ LMAR1 is ideal for retrofitting existing linear fluorescent high bay fixtures to LED. For use in applications such as retail, manufacturing, distribution, and warehouses facilities.



LMAR14A1UNVFDXXLFA84046
[4' Module Shown for 4' Retrofit]



LMAR18D1UNVFDXXLFA84096EN1
[Two 4' Modules Shown for 8' Retrofit]

Features

- Available in 4' kit modules that retrofit 4' and 8' fixtures
- Frosted acrylic matte contoured lens available
- LED modular engines made of lightweight aluminum, with pre-coated white finish for better thermal dissipation
- Retrofit light engine is designed to fit in existing linear fluorescent high bay fixture channel for ease of retrofit install
- Bulk pack standard. Single pack available
- For bulk pack standard, six 8' LMAR1 fixtures per box, 7 boxes per skid for 42 fixtures total
- Enlighted Control Option available for IoT applications

Electrical

- Available in 120v-277v, 347v and 480v
- Full Dimming [0-10v] fixtures

Ambient Operating Range

See ambient operating table on page 2

Fixture Certification & Listings

- UL Classified
- Buy American Act Compliant
- DesignLights Constortium® premium qualified luminaire
- Visit the [DLC QPL](#) for listed models

Patent Information

Orion is serious about intellectual property. This product may be covered by one or more patents. Patent information available at <http://www.orionlighting.com/about/patents/>

Rated Life

L70 > 150,000 hours

For Calculated L70 hours, please contact an Orion representative

Warranty

Orion LED ISON™ class fixtures are covered by a five-year limited warranty, ten-year limited warranty optional. Please contact Orion for additional details. Accessories and individual components are covered by separate OEM supplier warranties.

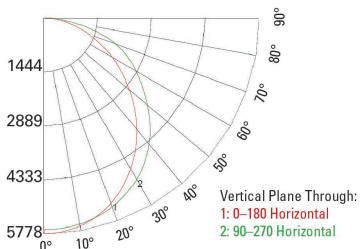


Performance Information, No Lens²

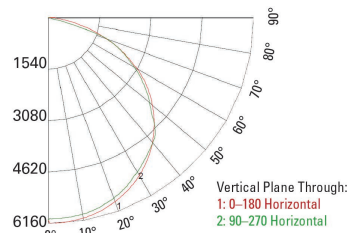
Series	Nominal Lumen Code	Actual Lumens	Input Voltage	Wattage	LPW	CCT	CRI	Input Current	Power Factor
4'									
LMAR1	A1	9,253lm	120v	54w	170	4000K	≥80	0.45A	>.90
LMAR1	A1	9,253lm	277v	55w	168	4000K	≥80	0.19A	>.90
LMAR1	A1	9,024lm	347v	58w	155	4000K	≥80	0.17A	>.90
LMAR1	A1	9,024lm	480v	59w	152	4000K	≥80	0.12A	>.90
8' (Two 4' Modules)									
LMAR1	D1	18,340lm	120v	107w	172	4000K	≥80	0.89A	>.90
LMAR1	D1	18,340lm	277v	106w	174	4000K	≥80	0.38A	>.90
LMAR1	D1	18,380lm	347v	112w	164	4000K	≥80	0.32A	>.90
LMAR1	D1	18,380lm	480v	114w	160	4000K	≥80	0.24A	>.90

Photometrics

D1 LFA 840



D1 NOL 840



Ambient Operating Temperatures⁴

Nominal Lumen Code	Standard Range
All Lumen Packages	-20°C to 45°C [-4°F to 113°F]

Physical Information³

Length	Width	Depth	Weight
See Page 3 for Dimensions			5.00lbs.

Fully Retrofitted Existing Fixture

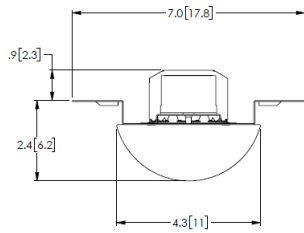


4' Version

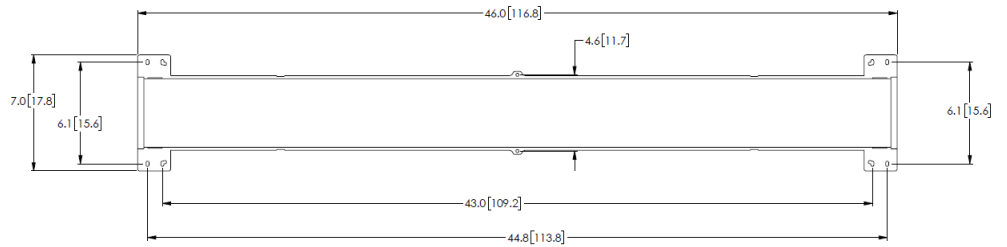


8' Version with Sensor

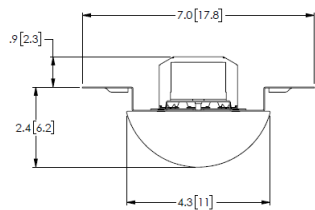
Retrofit Physical Dimensions



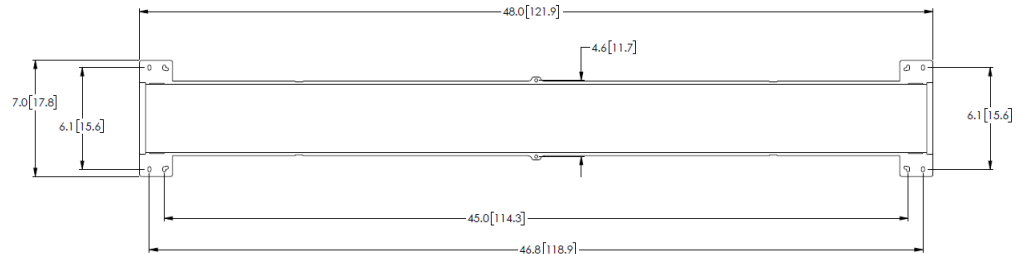
46" Width



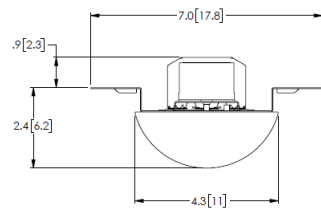
46" Length



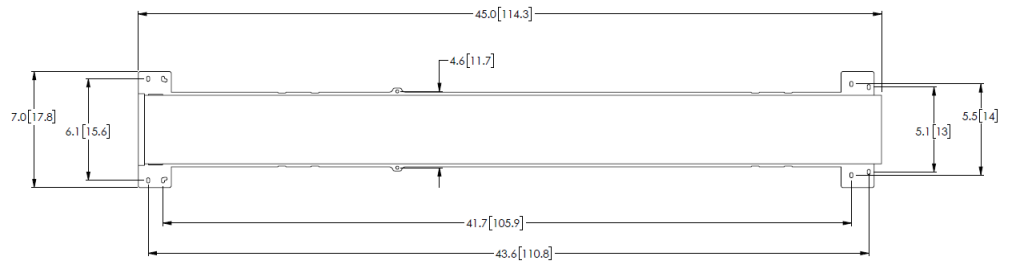
48" Width



48" Length



92"/96" Width



92"/96" Length

Ordering Information Example (NOTE: No dashes or spaces unless noted below)

Series	Fixture Size	Nominal Lumen Code	Voltage	Driver Type	Lens Options	CRI; Color Temp	Fixture Body Type	Control Options	Packaging Options
LMAR1	8	D1	UNV	FDXX	LFA	840	92	EN1	[Blank]

Ordering Information

Series	Fixture Size	Nominal Lumen Code ¹	Voltage	Driver Type ²	Lens Options	CRI; Color Temp	Fixture Body Type	Control Options	Packaging Options
LMAR1 = ISON Linear LED Module Retrofit, Gen 1	4 = 4'	4 ' A1 = 9,000lm	UNV = 120v-277v	FDXX = Full Dimming 0-10v	NOL = No Lens LFA = Lens, Frosted Acrylic	840 = 80CRI; 4000K	4 '	[Blank] = No Option EN1 = Enlighted One PIR Sensor, HIGH/LOW/ OFF, Active Dimming And Daylighting, Wireless Grouping See EN1 Accessories Table ^{4, 6*} EN2 = Enlighted Connected: All Features of EN1 - PLUS BLE Radio, Temperature Sensor, Scene Control, Demand Response, Data Collection, BMS Integration, Cloud Access ^{4*} EN3 = Enlighted IoT: All Features of EN2 - PLUS access to Apps: Space Management, Asset Tracking, and Contact Tracing Apps ^{4*}	[Blank] = Bulk Pack -SP = Single Pack
	8 = 8'	8 ' D1 = 18,000lm	347 = 347v 480 = 480v				46 = 46" Length 48 = 48" Length 8 ' 92 = 92" Length 96 = 96" Length		

Accessories (Field Installed)



Enlighted Sensor Option- 8' Models Only
[ENx]

Accessories (Field Installed)

EN1 Accessories Required for Commissioning ⁴	
WS-2-00-IL	Enlighted Wall Switch Room Controller - For Use with EN1 Enlighted Sensor (Quantity Needed Varies by Facility Layout and Fixture Group Size) Note: Max. of 4 switches per zone/group
LP-1-00	Green Laser for Commissioning EN1 Enlighted Sensor
Note: Contact your Orion representative regarding additional commissioning, quantities and back end control system pricing	

Additional Specification Information

¹ For actual lumens, see performance table

² Actual performance may vary by up to ±10% of values listed; facility factors and fixture options can affect performance values

³ Physical information described for 4' module weight. Weight will vary on option selected

⁴ **ENx** is limited to 0°C (32°F) environments. Contact Customer Service regarding additional commissioning and back end control system pricing

⁵ "XX" is a character placeholder for the manufacturing configuration

⁶ **EN1** allows for 75 fixtures max. per group. Contact Customer Service regarding commissioning