

ISON™ PureMotion™ UVC, Gen 1

Instruction Number: P-INT-X-447

Product Series: IPMU1

While turned ON, The IPMU1 provides continuous air sterilization using 275nm UVC technology protecting against viruses, bacteria, fungi and mold helping reduce the spread of these pathogens.

The use of this device is a supplement to and not a substitute for standard infection control practices; users must continue to follow all current infection control practices, including those practices related to cleaning and disinfection of environmental surfaces.

READ THE PRODUCT LABELS AND INSTALLATION INSTRUCTIONS BEFORE USING

Light from UV lamp may cause eye or skin injury including burns that are not immediately detectable. Do not operate UV lamp when lamp chamber is not sealed light-tight. If UV light exposure to people is possible, potentially exposed persons should wear UV filtering eye protection, long sleeves and gloves.

For any additional information on this product, please contact:

Orion Energy Systems Inc.

2210 Woodland Drive, Manitowoc WI 54220 USA

800.660.9340

www.orionlighting.com



PRECAUTIONS

- i. WARNING - UV radiation emitted from this device
- ii. Unintended use of the device, or damage to the hosing, may result in exposure to ultraviolet radiation
- iii. Ultraviolet radiation may cause eye and skin radiation
- iv. Avoid exposing eyes and skin to ultraviolet radiation

FIRST AID INSTRUCTIONS

If you eyes have been exposed to UVC, apply water and apply sterile dressing over the eye and seek medical attention.
If your skin has been exposed to UVC, apply cold water or ice to the area exposed and seek medical attention.



ELECTRICAL WARNING

1. Risk of fire or electric shock. To reduce risk of electrical shock, turn off power supply before installation or servicing.
2. To Reduce The Risk Of Fire Or Electric Shock, Do Not Use This Fan With Any Solid-State Speed Control Device.
3. To reduce the risk of fire, electric shock, or injury to persons, observe the following:
 - a) Use this unit only in the manner intended by the manufacturer. If you have questions, contact the manufacturer.
 - b) Before servicing or cleaning unit, switch power off at service panel and lock the service disconnecting means to prevent power from being switched on accidentally.
 - c) Field installers are responsible for recognizing specific site requirements and making adjustments to assure a complete, functional installation.
5. Make all power connections using UL listed components.
6. Electrical connections must be made by a qualified electrician and in accordance with NEC and local codes.

ISON™ PureMotion™ UVC, Gen 1 Panel Kit Replacement

Instruction Number: P-INT-X-447

Product Series: IPMU1

Use this instruction to replace the IPMU1 UV panel in the field.

Components

- 1 IPMU1 UV Panel Kit Replacement (See Fig. A)
 - UVPRU2** - 2' x 2' UV Panel Replacement **OR**
 - UVPRU4** - 2' x 4' UV Panel Replacement

Tools Required for Installation

- Cordless drill
- Philips screwdriver

Step-by-Step Instructions



WARNING!

Risk of fire or electric shock. To reduce risk of electrical shock, turn off power supply before installation or servicing.

1. Field installers are responsible for recognizing specific site requirements and making adjustments to assure a complete, functional installation.
2. Make all power connections using UL listed components.
3. Electrical connections must be made by a qualified electrician and in accordance with NEC and local codes.

- 1 Remove kit from packaging.

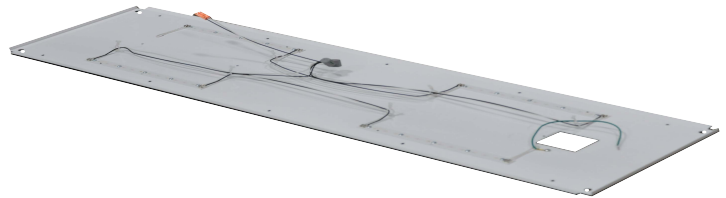


- 2 **!WARNING! Turn off power. High intensity ultraviolet light. Eye and skin hazard - avoid exposure to eyes/skin. Do not look directly at light and use eye protection.**

Disconnect fixture wiring and remove electrical access plate from IMPU1 device. (See Fig. 1)

- 3 Remove the 10 screws from the back center portion of the IPMU1 2' x 4', or 6 screws from the back center of the IPMU1 2' x 2'. (See Fig. 2 - IPMU1 2' x 4' shown)
- 4 Open the panel and use quick disconnect to unattach the UV board panel. (See Fig. 3)
- 5 Attach quick disconnect to new panel. Reinstall all screws on the panel that were removed in Step 3.
- 6 Reinstall electrical access plate per NEC and local codes.
- 7 Restore power and test. UV LEDs will glow violet to confirm board replacement has been installed correctly.

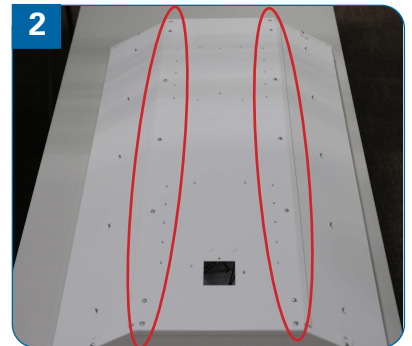
A



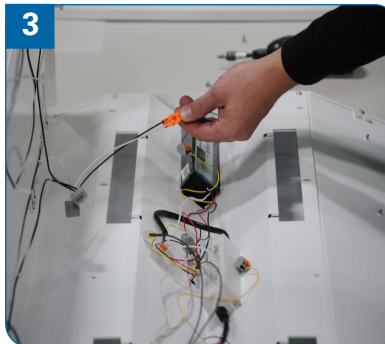
1



2



3



Recessed Ceiling Installation ISON™ PUREMOTION™ Gen 1

Instruction Number: P-INT-X-444

Product Series: IPMU1, IPML1 and IPMA1

WARNING!

1. Risk of fire or electric shock. To reduce risk of electrical shock, turn off power supply before installation or servicing.
2. To Reduce The Risk Of Fire Or Electric Shock, Do Not Use This Fan With Any Solid-State Speed Control Device.
3. To reduce the risk of fire, electric shock, or injury to persons, observe the following:
 - a) Use this unit only in the manner intended by the manufacturer. If you have questions, contact the manufacturer.
 - b) Before servicing or cleaning unit, switch power off at service panel and lock the service disconnecting means to prevent power from being switched on accidentally.
4. Field installers are responsible for recognizing specific site requirements and making adjustments to assure a complete, functional installation.
5. Make all power connections using UL listed components.
6. Electrical connections must be made by a qualified electrician and in accordance with NEC and local codes.
7. Light from UV lamp may cause eye or skin injury including burns that are not immediately detectable. Do not operate UV lamp when lamp chamber is not sealed light-tight. If UV light exposure to people is possible, potentially exposed persons should wear UV filtering eye protection, long sleeves and gloves.

Use this instruction to install the IPMU1, IPMA1, or IPML1 in a recessed ceiling grid.

Components

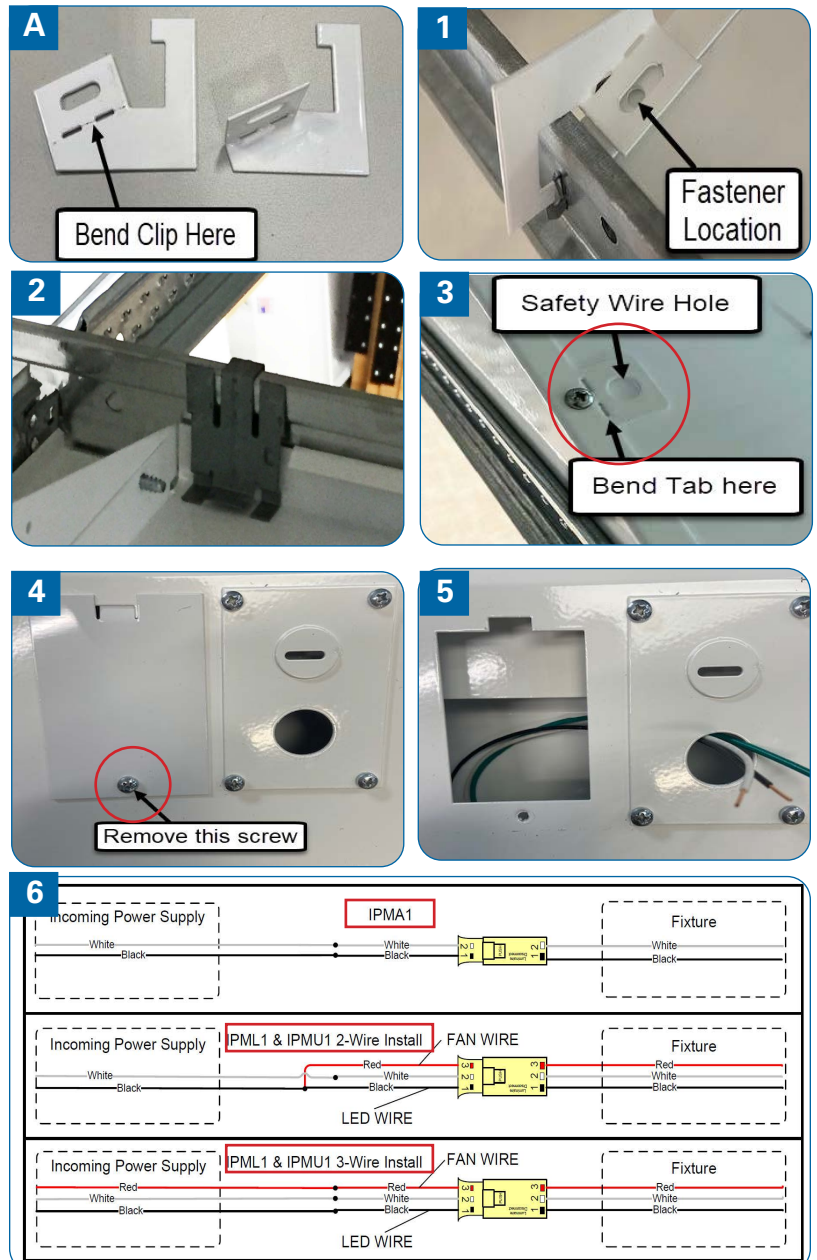
- 1 IPMU1, IPML1 or IPMA1 Device
- 2 IPMU1 and IPMA1 ONLY
-Standard Safety Clips: (2) Clips and (2) Self Drilling Screws

Tools Required for Installation

- Cordless drill or Philips screwdriver
- Pliers
- IPMA1 and IPMU1 come with safety clips and hardware
- Optional for IPML1:
 - Self provided safety clips
- Flat head screwdriver for IPMU1 and IPML1 seismic cable tabs

Step-by-Step Instructions

- 1 Remove product from packaging.
- 2 Set the fixture into the T-Bar grid framework.
- 3 **For IPMA1/IPMU1 Fixtures Only:** Install provided T-Bar standard safety clips with fasteners on both ends of the fixture. (See Fig. A and Fig. 1)
For IPML1 Fixtures Only: Install self supplied safety clips (sold separately - See Fig. 2)
- 5 **Optional for IPMU1/IPML1 Fixtures Only:** Install optional safety cable by bending tabs located on back of fixture. (See Fig. 3)
Optional for IPMA1: Install optional safety cable by attaching to fixture hanging tabs located at the ends of the fixture.
Note: Safety cable sold separately
- 6 Remove electrical access plate shown and make electrical connections per NEC and local codes (See Fig. 4, Fig. 5 and Fig. 6)
NOTE: IPMU1 and IPML1 Only - Red wire controls fan function, Black wire controls LED function. Connect to separate switches/controls for independent operation, or connect to same switch/control for simultaneous operation.
- 7 Reinstall electrical access plate. Restore power and test fixture.



ISON™ PureMotion™ Gen 1

Instruction Number: P-INT-X-445

Product Series: IPMU1 and IPML1 and IPMA1

Use this instruction to install the IPMU1 and IPML1 suspended mount brackets on to the product.

Components

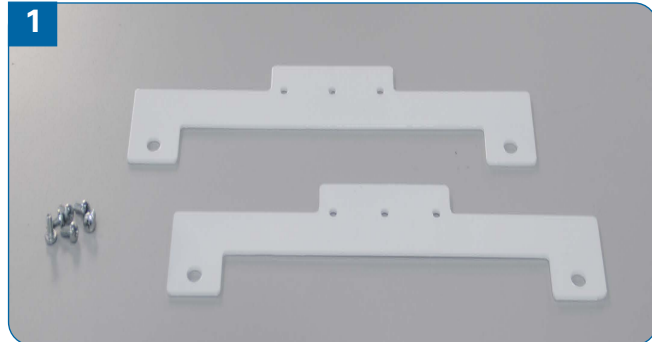
- 1 IPMU1 or IPML1 Product (IPMU1 Product Shown for install demonstration)
- 2 (2) Suspended Mount Brackets and hardware (shown in 1) to be used with HW-FC008 kit

Tools Required for Installation

-Cordless drill or Philips Screwdriver

Step-by-Step Instructions

- 1 Remove product from packaging along with mounting brackets and hardware.
- 2 Attach suspended brackets to both ends of the product into the predrilled holes in the product (See Fig. 2 and Fig. 3).
- 3 Once both brackets are installed (See Fig. 4) continue suspended hanging instructions provided with the HW-FC008 kit.
- 4 Remove electrical access plate. Make electrical connections per NEC and local codes.
- 5 Insert wires all carefully back into electrical access plate (do not pinch wires when closing) and reattach electrical access plate per NEC and local codes.
- 6 Restore power and test.



ISON™ PureMotion™ Air, Gen 1

Instruction Number: P-INT-X-445

Product Series: IPMA1

Use this instruction to install the IPMA1 wall mount bracket.

Components

- 1 IPMA1-WM Fixture

Tools Required for Installation

- Cordless drill or Philips Screwdriver
- 5/32" HEX Key

Step-by-Step Instructions

- 1 Remove product from packaging, mounting brackets and hardware.
- 2 Attach brackets to product (See Fig. 1 for surface mounting bracket hole locations, and Fig. 2 for completed bracket attachment)
- 3 Mount product to surface using OEM instructions (See Fig. 3 for final product install)

