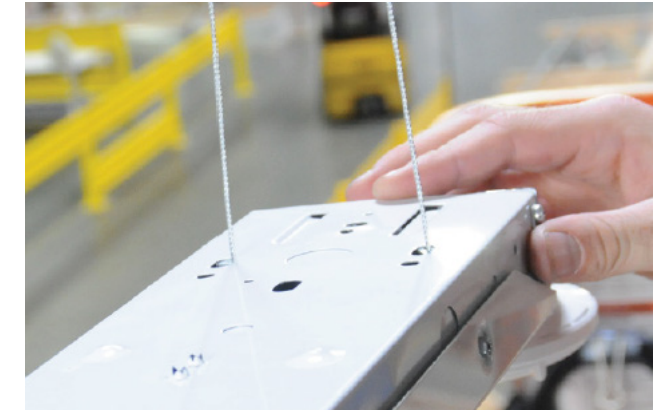


SFHR2

HARRIS STRIP RETROFIT, GEN2



1 INSTALLATION FLEXIBILITY
4' and 8' Strip Retrofit Kit is available in two channel widths, 4.25" or 5.00". The retrofit kit comes with safety tethers that secure the cover to the existing fixture body, allowing a single person to complete wiring and then secure the cover channel. This type product design minimizes customer work disruption and speeds up the installation process, while saving labor, time, and money.



SAFETY TETHERS

5 SUPERIOR EFFICACY
Up to 177 LPW efficacy delivers maximum energy savings.

6 LENS DIFFUSION
Sleek, frosted matte lens provides LED diffusion in any setting.

4 3.5x LIFE*
SFHR2 calculated L70 rating of 186,000 hours is a minimum of 3.5x as long as the typical LED tube retrofit alternative.

2 FACTORY INSTALLED OPTIONS
10w Battery Back Up. Multiple integrated control and sensor options allow for additional energy savings.

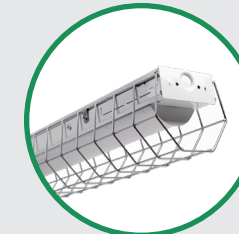


Enx



Px

3 FIELD INSTALLED OPTIONS
Fixture wireguard and end-mounted control options for field installation.



Wireguard



Sensors

Available in lumen packages from 2,000 to 6,000 lumens in 4' and 3,000 to 10,000 lumens in 8'. 120v-277v
*LED rated life based on SFHR2406LSDUNVFD L70 @ 25C ambient vs. Orion's TLEDB5 retrofit LED tubes.

