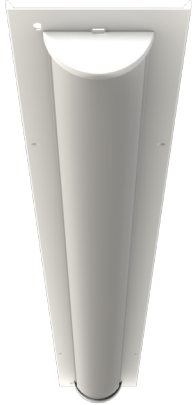


SFHR2

Applications

The HARRIS SFHR2 is ideal for retrofitting existing traditional linear fluorescent strip fixtures to LED. For use in areas such as manufacturing, distribution, warehouse, and retail settings.



SFHR24WD03LUNVFD850LAFG2SP

Project Name:	
Catalog Number:	
Type:	
Note:	
Date:	



Construction & Design

- Available in 4' and 8' fixture lengths and traditional 4.25" and 5.00" widths
- Retrofit light engine is designed to fit over existing linear fluorescent strip fixture channel with various locations on cover to secure to existing channel
- Fixture comes with tethers to hold cover, enables one-person installation
- LED light engine is made of lightweight aluminum, with pre-coated white finish for better thermal dissipation

Additional Options

- Field installed wireguard kit options available
- Optional frosted acrylic matte contoured lens provides LED diffusion in task application
- Single pack and bulk pack available
- Battery Back Up available in 10w, Certified in CA Title 20

Electrical

- Available in 120v-277v
 - Standard 0-10v dimming drivers
 - Power Factor >0.9
 - Total Harmonic Distortion < 20%*
- *Note: Varies based on option

Control and Sensor Options

- Factory installed control and sensor options
- Control and sensor options are available to be installed in the field
- Manual Programming Sensor
- Remote Programming Sensor
- Remote Programming with Zoning
- On Site Network Programming
- Internet/Cloud Based Network Programming

Lumen Maintenance

See Lumen Maintenance table on page 2

Fixture Certification & Listings

- UL/cUL Listed
- UL/cUL Listed for Damp Locations
- Buy American Act Compliant
- DesignLights Consortium™ Standard qualified luminaire
- Visit the [DLC QPL](#) for listed models

Warranty

See Orion's [Product Limited Warranty](#) for more details and information

Performance Information, 120v, ≥ 80 CRI, 4000K¹

Nominal Lumen Code	Wattage	No Lens		LAFG3		LAFG2		Input Current
		Lumens	LPW	Lumens	LPW	Lumens	LPW	
4'								
02L	11w	2,009lm	180	1,826lm	163	1,943lm	174	0.09A
03L	20w	3,517lm	173	3,198lm	158	3,403lm	168	0.17A
06L	39w	6,144lm	158	5,675lm	146	5,945lm	153	0.32A
8'								
03L	20w	3,604lm	182	3,276lm	165	3,487lm	176	0.17A
06L	37w	6,429lm	173	5,845lm	158	6,211lm	167	0.31A
10L	59w	9,695lm	165	8,588lm	146	9,381lm	160	0.49A

Lumen Maintenance with No Lens²

Nominal Lumen Code	Fixture Size	Nominal Lumens	Operating Temperature	Calculated Lumen Maintenance		
				L70	L80	L90
02L	4'	2,000	25°C	325,000	149,000	71,000
			55°C	221,000	139,000	66,000
03L	4'	3,000	25°C	238,000	149,000	71,000
			55°C	212,000	133,000	63,000
06L	4'	6,000	25°C	186,000	117,000	56,000
			55°C	167,000	105,000	50,000
03L	8'	3,000	25°C	209,000	131,000	62,000
			55°C	152,000	95,000	45,000
06L	8'	6,000	25°C	238,000	149,000	70,000
			55°C	212,000	133,000	63,000
10L	8'	10,000	25°C	238,000	149,000	70,000
			55°C	203,000	80,000	60,000

Additional Specification Information

¹ Actual performance may vary by up to $\pm 10\%$ of values listed; facility factors and fixture options can affect performance values.

² Calculated hours based on TM-21 projections and components used at the time of testing. Warranty is not associated with Calculated Lumen Maintenance

Ordering Information Example (NOTE: No dashes or spaces unless noted below)
SFHR24WD02LUNVFD840LAFG2SP

Ordering Information (Enter Selected Catalog Number Below)

Series	Fixture Size	Channel Width	Nominal Lumen Code ³	Voltage	Driver Type	CRI; Color Temp	Lens Options	Fixture Options	Factory Installed Control Options	Packaging Options
SFHR2= HARRIS LED Strip Retrofit Series, Gen 2	4= 4' 8= 8'	SD= 4.25" Wide WD= 5.00" Wide	4' 02L= 2,000lm 03L= 3,000lm 06L= 6,000lm 8' 03L= 3,000lm 06L= 6,000lm 10L= 10,000lm	UNV= 120v-277v	FD= Full Dimming	835= 80CRI; 3500K 840= 80CRI; 4000K 850= 80CRI; 5000K	(Blank)= No Lens LAFG2= Lens, Acrylic Frosted General 120° 2" Wide LAFG3= Lens, Acrylic Frosted General 120° 3" Wide	(Blank)= No Options BB10= Battery Back Up, 10w ⁴	[See below for part numbers and descriptions]	(Blank)= Bulk Pack SP= Single Pack

Sensor and Control Ordering Information

Factory Installed Control Options⁵

(Blank)=

No Control Options

VL=

Keilton: PIR Occupancy Sensor, Daylight Harvesting, High and Low End Trim, 0-10V Dimming, IR Remote Programmable⁶

VBM=

Keilton Bluetooth Mesh Network: Wireless Fixture Controller, PIR Occupancy Sensor, HIGH/LOW/OFF, 0-10v Dimming, Daylight Harvesting, High End Trim, Luminaire Level Lighting Control, Wireless Zones, Time-of-Day Scheduling, Keilton Mobile App Programmable

P3=

Philips EasySense SNS210: PIR Occupancy Sensor, Daylight Harvesting, High and Low End Trim, Luminaire Level Lighting Control, Wireless Zones, SR Dimming, ZigBee, Apple iOS and Android Bluetooth App Programmable

EN2=

Enlighted Connected Lighting Sensor: Network Lighting Control Component, PIR Occupancy Sensor, Daylight Harvesting, High End Trim, Dimming Modes, Luminaire Level Lighting Control, Wireless Zones, Modified IEEE 802.15.4.1, BLE Radio, Temperature Sensor, Scene Control, Demand Response, Data Collection, BMS Integration, Cloud Access

EN3=

Enlighted IoT: All Features of EN2 - Network Lighting Control PLUS access to Apps: Space Management, Asset Tracking, and Contact Tracing Apps

L1=

Lutron Vive: Integral RF Control, Network Lighting Control Component, Wireless Zones, DALI SR Dimming

L2=

Lutron Vive: Integral PIR Occupancy Sensor, Daylight Harvesting, High and Low End Trim, Network Lighting Control Component, Wireless Zones, DALI SR Dimming

Additional Specification Information

³ For actual lumens, see performance table

⁴ Multiply 10w by the lumens per watt (LPW) of the fixture to calculate lumen output in emergency mode

⁵ Visit our [Lighting Controls](#) page for more information

⁶ Requires remote for commissioning and/or modifying settings. See accessories table

Accessories (Factory Installed)



Sensor Option [ENx]



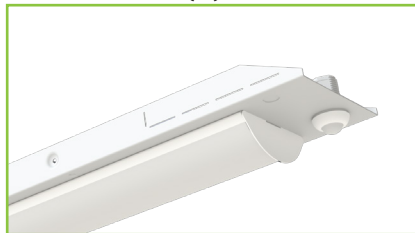
Sensor Option [P3]



Sensor Option [L2]



Sensor Option [L1]



Sensor Option [VL]



Sensor Option [VBM]



Lens Option [LAFG3]



Lens Option [LAFG2]

Physical Information

Length	Width	Depth with No Lens	Depth with Lens	Weight ⁷
4'	4.25" or 5.00"	1.38"	2.38"	3.20lbs.
8'		1.38"	2.38"	4.80lbs.

Ambient Operating Temperatures

Nominal Lumen Code	All Voltages	With Battery Back Up
All Lumen Packages	-20°C to 55°C [-4°F to 131°F]	Min. Operating Temp. 0°C [32°F]

Sensor Type	Operating Range
P3	0°C to 55°C [32°F to 131°F]
ENx	0°C to 50°C [32°F to 122°F]
Lx	0°C to 55°C [32°F to 131°F]
VL	0°C to 55°C [32°F to 131°F]
VBM	0°C to 55°C [32°F to 131°F]

Additional Specification Information

⁷Weight will vary based on option selected

Accessories (Field Installed)

Remote Required for Commissioning			
RM51	Vealite Keilton Sensor IR Remote Controller		
FSIR-100	Hand-held Sensor Configuration Tool Required for Adjusting Default Factory Settings, Including Hi/Low/Off Modes and Sensitivity/Time Delay/Cut Off (For Use With FSP-221B)		
Keilton Ecosystem Accessories			
All accessories can be commissioned and controlled via the Keilton app as they are part of the same ecosystem as the VBM Keilton sensors. For more information on the Keilton Ecosystem, please visit this link .			
WP1013	3-Key Battery Powered Bluetooth Wireless Wall Switch. Order additional WP accessory if mounting to wall.		
WP1025	5-Key Battery Powered Bluetooth Wireless Wall Switch. Order additional WP accessory if mounting to wall.		
WP1013S	3-Key AC Powered Bluetooth Wireless Wall Switch		
WP1017S	7-Key AC Powered Bluetooth Wireless Wall Switch		
WP	Wall Plate for use with wall switches WP1013 and WP1025		
WP1015S	5-Key Solar Powered Bluetooth Wireless Wall Switch		
WF20R	20A Bluetooth Plug Load Controller		
CR01-ETC	Real Time Clock USB Dongle (Keeps Keilton devices schedules in sync in case of power loss - 1 per zone)		
Sensor Options			
OSFLA-ITW	Leviton PIR Occupancy Sensor, ON/OFF, Manual Programmable, 20' & 40' lenses included		
To order sensor, select one option from each column below and combine part numbers (Example: FSP-221B-D-L2-W)			
End Mount Sensor	Nipple Configuration	Lens Option	Color
FSP-221B , Wattstopper PIR Occupancy Sensor, Photosensor, High and Low End Trim, 0-10V Dimming, IR Remote Programmable ⁶	-D= Drop Nipple	-L2= 360° Lens, Max Coverage 48' Diameter from 8' Height	-W= White
		-L3= 360° Lens, Max Coverage 40' Diameter from 20' Height	
		-L7= 360° Lens, Max Coverage 100' Diameter from 40' Height	
Wireguard Options ⁸			
LED-SFHR-WG01-KIT-SP	4' Fixture Wireguard Standard Model (4.25" Wide) Single Pack		
LED-SFHR-WG01-KIT	4' Fixture Wireguard Standard Model (4.25" Wide), Bulk Pack		
LED-SFHR-WG02-KIT-SP	4' Fixture Wireguard Wide Model (5.00" Wide), Single Pack		
LED-SFHR-WG02-KIT	4' Fixture Wireguard Wide Model (5.00" Wide), Bulk Pack		

Additional Specification Information

⁶Requires remote for commissioning and/or modifying settings. See accessories table

⁸ All wireguards are shipped in 4' increments. For 8' fixtures, two 4' wireguards are required.

Accessories (Field Installed)



Wireguard
(LED-SFHR-WG01-KIT-SP)



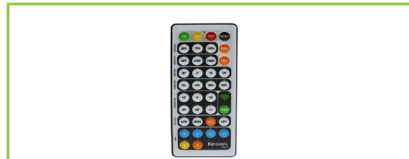
Sensor
(FSP-221B-D-Lx-W)



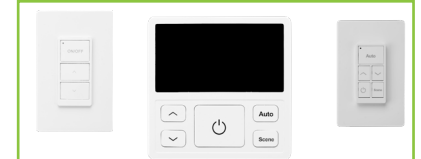
Sensor Configuration Tool
(FSIR-100)



Sensor
(OSFLA-ITW)



Handheld Sensor Remote
(RM51)

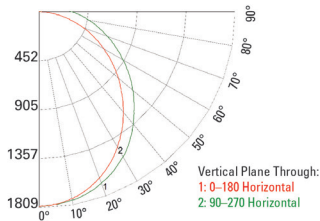


Keilton Ecosystem Accessories

Photometrics

Visit orionlighting.com to obtain all .IES files

06L 850 LAFG3



06L 850 LAFG2

