

WSLED3

Applications

The Harris WSLED3 is a traditional style and high performance family of wall packs. The family includes five different lumen outputs to meet various exterior security requirements. Ideal to replace any existing HID wall packs and deliver exceptional energy savings.



WSLED3A1UNVND850BR

Features

- Die-cast aluminum powder coated housing design for harsh outdoor environments
- Heat and impact resistant borosilicate glass lens
- Lumen packages range from 5,000-18,000 to replace up to 400W HID equivalent wall packs
- 80 CRI minimum
- Back plated design with template to mount directly over a standard recessed junction box or for surface mounting
- 10kv/5kA surge protection standard
- To meet electrical codes egress, battery back up available
- Photocell available

Electrical

- Available in 120v-277v
- Non-Dimming
- Power Factor >0.9
- Total Harmonic Distortion < 20%

Ambient Operating Range

See ambient operating table on page 2

Fixture Certifications & Listings

- UL/cULus Listed
- UL Wet Listed

Lumen Maintenance

See lumen maintenance table on page 2

Warranty

See Orion's [Product Limited Warranty](#) for more details and information



Performance Information, 120v CRI $\geq 80^2$

Nominal Lumen Code	Wattage	4000K		5000K		Input Current
		Actual Lumens	LPW	Actual Lumens	LPW	
A1	41w	5,373lm	130	5,492lm	133	0.34A
B1	48w	6,260lm	130	6,398lm	133	0.40A
C1	70w	8,489lm	121	8,658lm	123	0.58A
D1	99w	12,398lm	125	12,653lm	127	0.83A
E1	138w	17,607lm	128	17,738lm	129	1.15A

Lumen Maintenance

Nominal Lumen Code	Nominal Lumens	Calculated Lumen Maintenance		
		L70	L80	L90
A1/B1/C1	5,000/6,000/9,000	407,000	242,000	96,000
D1/E1	13,000/18,000	406,000	248,000	109,000

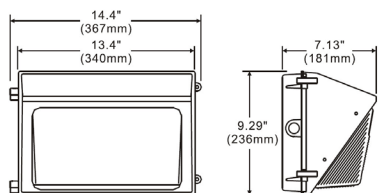
Ambient Operating Temperatures

Nominal Lumen Code	Standard Range
A1/B1/C1/D1	-40°C to 40°C [-40°F to 104°F]
E1	-40°C to 30°C [-40°F to 86°F]

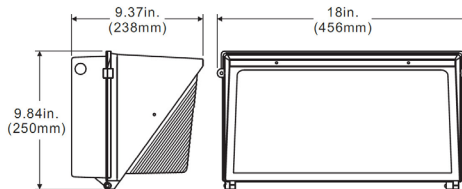
Physical Information

Nominal Lumen Code	Height	Width	Depth	Weight ³
A1/B1/C1	9.29"	14.40"	7.13"	10.40lbs.
D1	9.84"	18.00"	9.37"	16.40lbs.
E1	9.84"	18.00"	13.00"	17.80lbs.

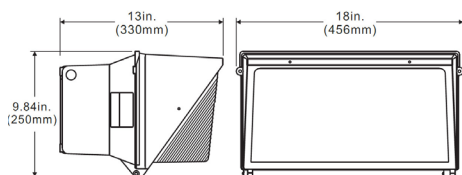
A1/B1/C1 Dimensions



D1 Dimensions



E1 Dimensions



Ordering Information Example (NOTE: No dashes or spaces unless noted below)

Series	Nominal Lumen Code	Voltage	Driver Type	CRI; Color Temp	Fixture Colors	Fixture Options	Packaging Options
WSLED3	A1	UNV	ND	850	BR	[blank]	-SP

Ordering Information

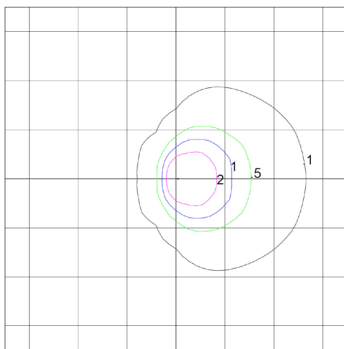
Series	Nominal Lumen Code ¹	Voltage	Driver Type	CRI; Color Temp	Fixture Colors	Fixture Options	Packaging Options
WSLED3 = HARRIS LED Semi-Cutoff Wall Pack, Gen 3	A1 = 5,000lm B1 = 6,000lm C1 = 9,000lm D1 = 13,000lm E1 = 18,000lm	UNV = 120v-277v	ND = Non-Dimming	830 = 80CRI; 3000K* 840 = 80CRI; 4000K 850 = 80CRI; 5000K	BR = Bronze	[Blank] = No Options PC = Integrated Photocell BB = Battery Back up 8w	-SP = Single Pack

*Special order with longer lead time.

Photometrics

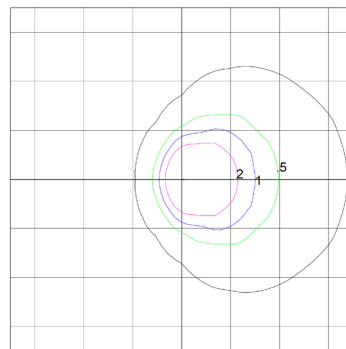
Visit orionlighting.com to obtain all .IES files

C1 850



Distance are in Units of Mounting Height
Mounting Height 30'
Max. Calculated Value: 5.28 FC

E1 850



Distance are in Units of Mounting Height
Mounting Height 30'
Max. Calculated Value: 11.31 FC

Additional Specification Information

¹ For actual lumens, see performance table

² Actual performance may vary by up to ±10% of values listed; facility factors and fixture options can affect performance values.

³ Weight will vary based on options selected