



HARRIS ARCHITECTURAL FLOOD LIGHT, GEN 4

FLGA4



FLGA4C1UNVFD8CSBRF77SFTPCSP



FLGA4B1UNVFD8CSBRF77KNMPCSP

Project Name:	
Catalog Number:	
Type:	
Note:	
Date:	



Intended Use

- The Harris FLGA4 is a cost effective and high-performance family of flood luminaires. The family includes nine different lumen outputs to meet most exterior requirements for parking lots, driveways, walkways, and building exteriors. Ideal to replace any existing HID floods and deliver exceptional energy savings.

Construction

- Die-cast aluminum powder coated construction to withstand outdoor environments
- Anti-corrosion stainless steel hardware
- Clear Tempered Glass Lens
- NEMA Type 7Hx7V optics
- Field selectable lumens provide a late point adjustment at the installation site
- Field selectable CCT between 3000K, 4000K or 5000K
- Minimum 80 CRI

Electrical

- 120-277V Input
- Standard ON/OFF Photocell
- 0-10V diming
- 2kV Surge Protection for A1 (35w)
- 4kV Surge Protection for B1 (80w)
- 10kV Surge Protection for C1 (150w)

Ambient Operating Range

- 30°C to 50°C (-22°F to 122°F)

Installation

- Design to be mounted by Knuckle, Slipfitter or Yoke.

Fixture Certifications & Listings

- UL/cUL Listed
- UL Listed for Wet Locations
- IP65 Rated

Warranty

- 5-year standard warranty standard
- 10-year optional warranty available at additional cost
- See Orion's [Product Limited Warranty](#) for more details and information



HARRIS ARCHITECTURAL FLOOD LIGHT, GEN 4

FLGA4

Ordering Information Example (NOTE: No dashes or spaces unless noted below)

FLGA4A1UNVFD8CSBRF77KNMPCSP

Ordering Information [Enter Selected Catalog Number Below for Factory-Installed Options]

Series	Nominal Lumen Code ¹	Voltage	Fixture Type	CRI; Color Temp	Fixture Color	Distribution	Mounting Options	Fixture Options	Packaging Options
FLGA4= Harris Architectural Flood Light, Gen 4	A1= 2,000lm/ 3,500lm/ 5,000lm B1= 7,000lm/ 9,000lm/ 11,000lm C1= 15,000lm/ 18,000lm/ 21,000lm	UNV= 120v-277v	FD= Full Dimming	8CS= 80CRI; 3000K/ 4000K/ 5000K	BR= Bronze	F77= Flood 7Hx7V	A1-B1 Lumens KNM= ½" NPS Knuckle Mount C1 Lumen SFT= Slipfitter Mount	PC= Photocell Standard	SP= Single Pack
	NOTES: ¹ For actual lumens, see the performance table								

Note: All fixtures are set to max lumen range output at 5000K at the factory [EX: FLGA4A1=5,000 at 5000K] , Photocell ON

Standard Mounting Options



A1 / B1

½" NPS Knuckle
[KNM]



C1

2-3/8" Slipfitter
[SFT]

Accessories [Sold Separately - Field Installed]

Mounting Options	
FLGA4-YK-A1	Yoke, A1, Bronze
FLGA4-YK-B1	Yoke, B1, Bronze
FLGA4-YK-C1	Yoke, C1, Bronze



Yoke
[FLGA4-YK-x1]



HARRIS ARCHITECTURAL FLOOD LIGHT, GEN 4

FLGA4

Performance Information [120v, CRI>80]²

Lumen Code	Nominal Lumens	Wattage	3000K		4000K		5000K	
			Lumens	LPW	Lumens	LPW	Lumens	LPW
A1	2,000	15w	2,394	152	2,525	164	2,528	160
	3,500	25w	3,636	138	3,913	156	3,858	148
	5,000	35w	4,428	131	4,807	147	4,666	136
B1	7,000	40w	6,925	158	7,399	173	7,267	166
	9,000	60w	9,318	151	9,886	169	9,674	158
	11,000	80w	10,869	132	11,631	147	11,289	138
C1	15,000	100w	15,544	156	16,525	171	16,126	161
	18,000	120w	18,309	150	19,178	167	18,581	156
	21,000	150w	19,591	130	21,022	147	20,675	139

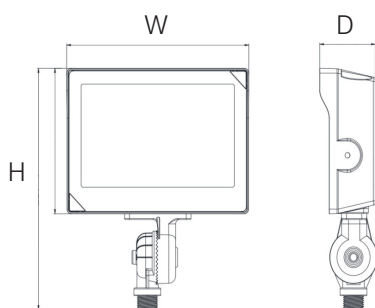
Lumen Maintenance³

Nominal Lumen Code	Nominal Lumens	Operating Temperature	Calculated Lumen Maintenance		
			L70	L80	L90
All	All	25°C	142,000	89,000	43,000

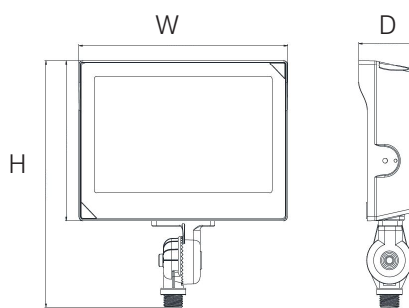
Physical Information

Nominal Lumen Code	Mounting Method	Width	Height	Depth	Weight
A1	KNM	7.20"	8.66"	2.21"	3lb
B1	KNM	8.70"	9.84"	2.28"	5lb
C1	SFT	11.42"	15.20"	2.87"	8.5lb

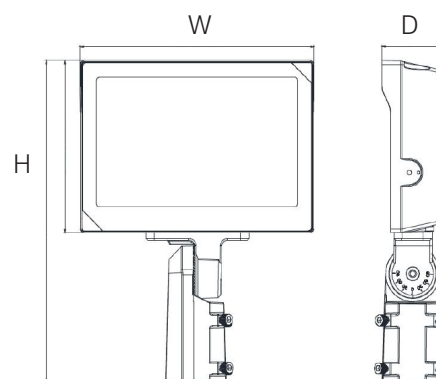
A1



B1



C1



Footnotes

²Actual performance may vary up to ±10% of values listed; facility factors and fixture options can affect performance values

³Calculated hours based on TM-21 projections and components used at the time of testing. Warranty is not associated with calculated lumen maintenance



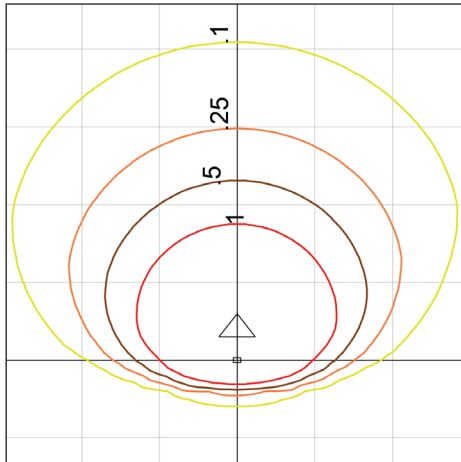
HARRIS ARCHITECTURAL FLOOD LIGHT, GEN 4

FLGA4

Photometrics

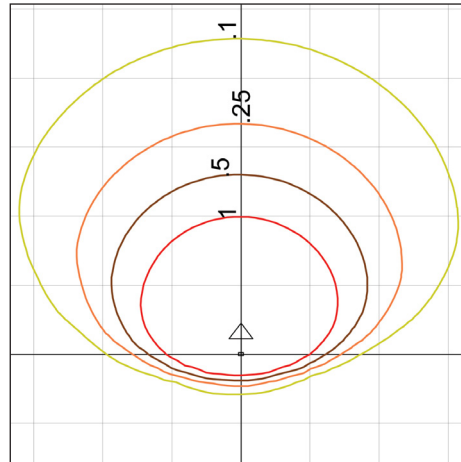
Visit orionlighting.com to obtain all .IES files

A1 4,666LM 5000K



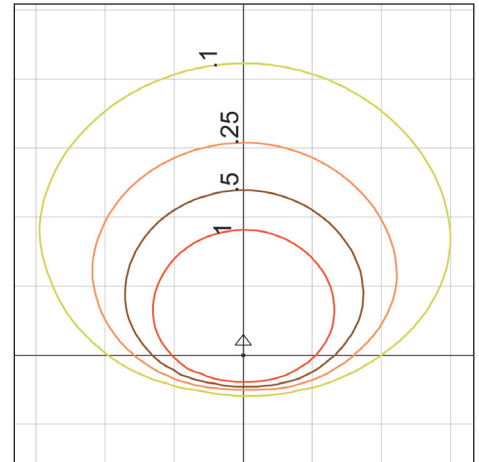
MH= 15ft, Grid = 15ft x 15ft,
Tilted at 50deg

B1 11,289LM 5000K



MH= 20ft, Grid = 20ft x 20ft,
Tilted at 50deg

C1 20,675LM 5000K



MH= 30ft, Grid = 30ft x 30ft,
Tilted at 50deg