

SCTD1 4' TLEDA Retrofit Installation

Instruction Number: P-INT-X-403

Use this instruction to install the SCTD1 with TLEDAs onto existing open or enclosed fluorescent strip fixtures.

Components Supplied (See Img A to Right)

- (1) 4' Ballast Cover and hardware for attaching to existing fixture housing
- Prewired ballast and lamp holders (amount of lamp holders determined by model ordered)
- Wire nuts
- TLEDA LED tubes

Tools Required for Installation

- Wire cutters/strippers
- Screwdriver

Step-by-Step Instructions



WARNING!

Risk of fire or electric shock. To reduce risk of electrical shock, turn off power supply before installation or servicing.

1. Field installers are responsible for recognizing specific site requirements and making adjustments to assure a complete, functional installation.

2. Make all power connections using UL listed components.

3. Electrical connections must be made by a qualified electrician and in accordance with NEC and local codes.

1 Remove lens (if applicable) of existing fixture. Remove and discard existing lamps and fixture cover.

2 Remove existing lamp holders, lamp holder bracket, ballast and wiring. Leave power supply wires & existing fixture housing in place.

3 Screw prewired ballast into existing fixture housing. (See Fig. 1)

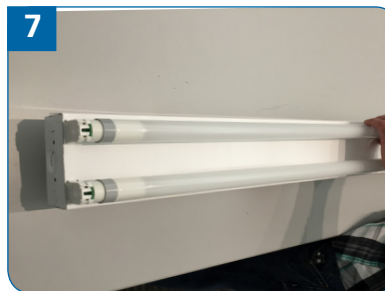
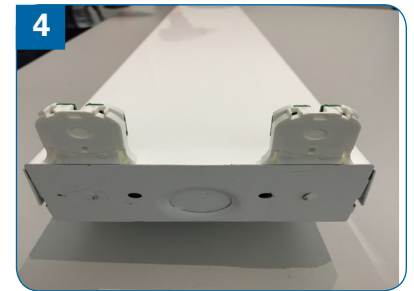
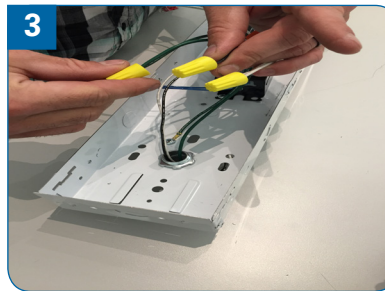
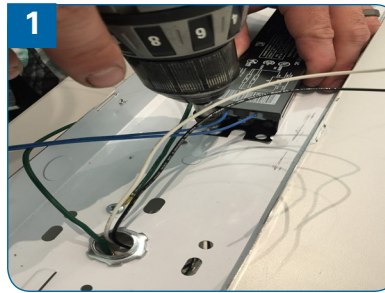
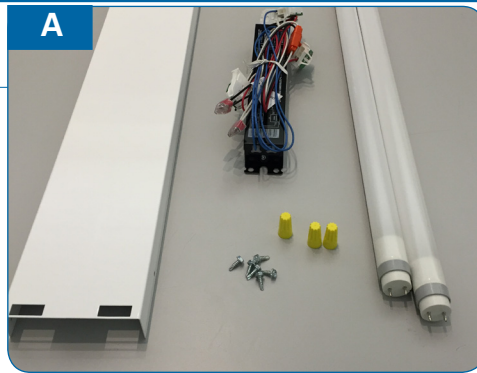
4 Insert lamp holders into ends of 4' ballast cover and snap securely in place. (See Fig. 2) Make connections from existing power supply using wire nuts and lamp holders per NEC and local codes. (See Fig. 3)

5 Tuck all wires neatly into the existing fixture body channel, and attach the 4' Ballast Cover assembly onto the channel. (See Fig. 4 for flush fit on existing fixture housing) Screw in place with provided hardware on ballast cover designated locations. (See Fig. 5 for example of location and Fig. 6 for completed attachment to fixture housing)

6 Insert and turn TLEDAs into lamp holders. (See Fig. 7)

7 Re-install existing lens (if applicable).

8 Restore power and test fixture.



Warning: Risk of fire or electrical shock. LED Retrofit kit installation requires knowledge of luminaires electrical systems. If not qualified, do not attempt installation. Contact a qualified electrician.

Warning: Risk of fire or electrical shock. Install this kit only in the luminaires that has the construction features and shown in the photos and/or drawings and where the input rating of the retrofit kit does not exceed the input rating of the luminaire.

Warning: To prevent wiring damage or abrasion, do not expose wiring to edges of sheet metal or other sharp objects.

Warning: Risk of fire or electric shock. Luminaire wiring or electrical parts may be damaged when drilling for installation of LED retrofit kit. Check for enclosed wiring and components.

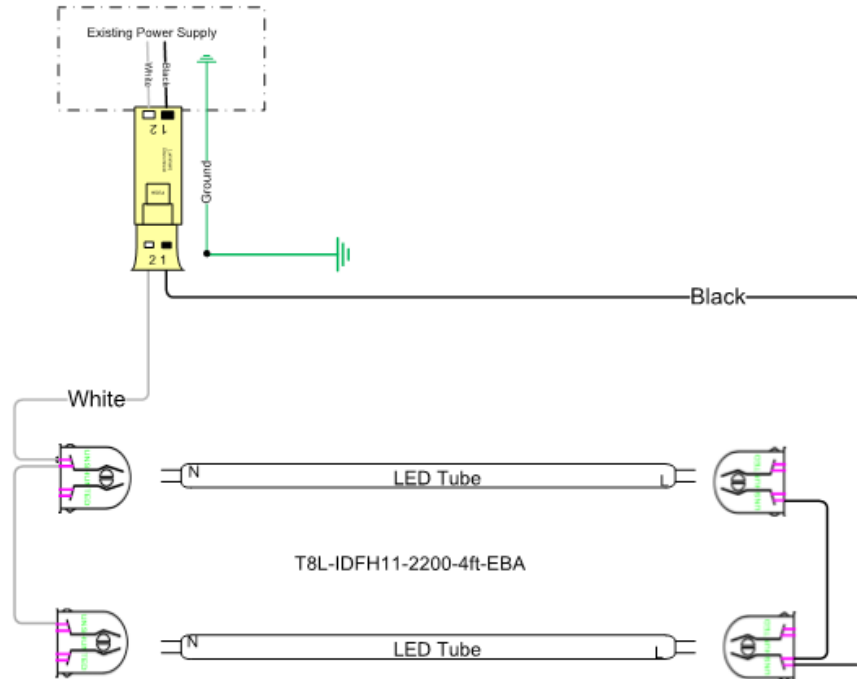
Warning: Only those open holes indicated in the photographs and/or drawings may be made or altered as a result of kit installation. Do not leave any open holes in an enclosure of wiring or electrical components.

Warning: Do not make or alter an open holes in an enclosure of wiring or electrical components during kit installation.

SCTD1 4' TLEDB Retrofit Installation

Instruction Number: P-INT-X-405

Wiring Diagram for 4ft LED Conversion Kit



Warning: Risk of fire or electrical shock. LED Retrofit kit installation requires knowledge of luminaires electrical systems. If not qualified, do not attempt installation. Contact a qualified electrician.

Warning: Risk of fire or electrical shock. Install this kit only in the luminaires that has the construction features and shown in the photos and/or drawings and where the input rating of the retrofit kit does not exceed the input rating of the luminaire.

Warning: To prevent wiring damage or abrasion, do not expose wiring to edges of sheet metal or other sharp objects.

Warning: Risk of fire or electric shock. Luminaire wiring or electrical parts may be damaged when drilling for installation of LED retrofit kit. Check for enclosed wiring and components.

Warning: Lamp Replacement Marking - Identification of the replacement LED lamp type/model to be used along with manufacturer and ordering information. Jiaxing Super Lighting T8L-IDFH11-1800-4ft-XXX-xx LED

Warning: Only those open holes indicated in the photographs and/or drawings may be made or altered as a result of kit installation. Do not leave any open holes in an enclosure of wiring or electrical components.

Warning: Do not make or alter an open holes in an enclosure of wiring or electrical components during kit installation.