

Industrial High Bay Fixtures with Universal V Hanger and Adjustable Wire Hanger

Instruction Number: P-INT-X-358

Use this instruction to install the industrial High Bay fixtures with V Hanger and Adjustable Wire Hanger.

Components

- 1 (2) Universal V Hanger
- 2 (2) Adjustable Wire Hangers (available in various lengths)
- 3 Industrial High Bay fixture with mounting tabs

Tools Required for Installation

- Cordless Drill
- Tape measure
- Eyebolt (or other enclosed support for adjustable wire hanger, see below for typical fasteners and driver)

TYPICAL FASTENERS AND DRIVER



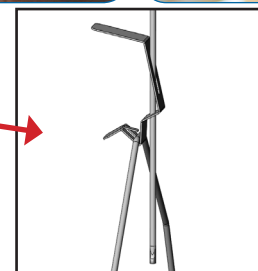
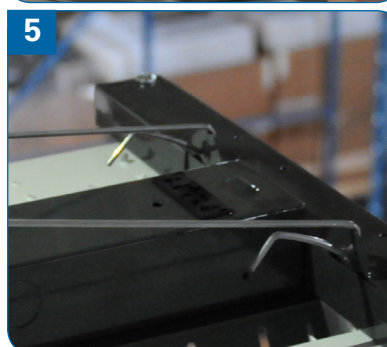
Step-by-Step Instructions



WARNING!

Risk of fire or electric shock. To reduce risk of electrical shock, turn off power supply before installation or servicing.

1. Field installers are responsible for recognizing specific site requirements and making adjustments to assure a complete, functional installation.
2. Make all power connections using UL listed components.
3. Electrical connections must be made by a qualified electrician and in accordance with NEC and local codes.
 - 1 Remove fixture from packaging. Check to see above listed components are included.
 - 2 Mark ceiling for eyebolt locations approximately 46" apart (varies depending on fixture type). (See Fig. 1)
 - 3 Screw eyebolts (self supplied) into marked locations. (See Fig. 2)
 - 4 Insert adjustable wire hanger through each eyebolt. (See Fig. 3)
 - 5 Hook Universal V Hanger through mounting tabs on each end of fixture. (See Fig. 4 & Fig. 5)
 - 6 Clip Universal V Hangers into the adjustable wire clips on each end. (See Fig. 6 & Fig. 7)
- NOTE:** Make sure V Hanger can not be unhooked from clip on adjustable wire hanger.
- 7 Check to make sure fixture is level and secure. Make electrical connections from fixture to the power supply per NEC and local codes.
- 8 Restore power and test fixture.



Orion supplied hanging devices are NOT warranted or recommended for use in environments:
 1). that have corrosive agents present that may degrade the integrity of the hanging device.
 2). where movement of the fixture may occur while the hanging device is supporting the fixture.

For additional hanging and mounting options for our industrial product line, please see our Industrial Hanging Application Guide available on most product pages.

High Bay with -ECAB Cables

Instruction Number: P-INT-X-424

Product Series: Open and Enclosed High Bay Fixtures with Hanging Tabs

Use this instruction to install a fixture with -ECAB hangers.

Components

- 1 (2) ECAB Mounting Cables (Y Style with eyelets and snap hooks attached)

Tools Required for Installation

- Cordless Drill
- Eyebolt (or other enclosed support for -ECAB hanger)
- Tape Measure

Step-by-Step Instructions

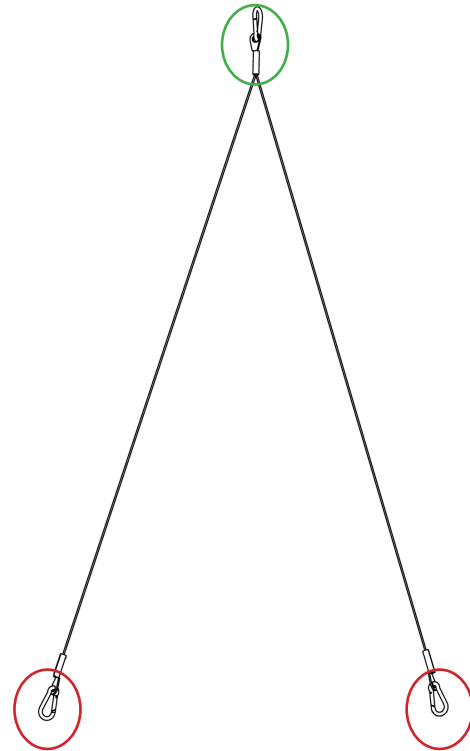


WARNING!

Risk of fire or electric shock. To reduce risk of electrical shock, turn off power supply before installation or servicing.

1. Field installers are responsible for recognizing specific site requirements and making adjustments to assure a complete, functional installation.
2. Make all power connections using UL listed components.
3. Electrical connections must be made by a qualified electrician and in accordance with NEC and local codes.

- 1 Remove fixture from packaging. Check to see if above listed components are included.
- 2 Measure the length of the fixtures hanging tabs to the other end of the fixtures hanging tabs, and mark the installation surface on each end of tape measure. (See Fig.1)
- 3 Screw eyebolt (self supplied) into marked section on install surface. Repeat for other eyebolt on opposite mark. (See Fig.2)
- 4 Attach snap hooks (circled in red) to hanging tabs on one end of fixture. Repeat on opposite end of fixture with other ECAB hanging cable. (See Fig.3)
- 5 Insert third snap hook on each ECAB hanging cable through eyebolt (circled in green); level fixture as needed. (See Fig.4 & Fig.5)
- 6 Once fixture is level; connect power from fixture to power supply per NEC and local codes. (See Fig.6)



HARRIS LED High Bay Star Line, Gen 1

Instruction Number: P-INT-X-430

Use this instruction to pendant mount the 2' and 4' HHSL1.

Components

-Harris High Bay Star Line Fixture
-LED-HHSL-PMR01-KIT (See Image A. Includes: Conduit Connector, (4) screws, pendant mount bracket, whip, (6) wago connectors)

Tools Required for Installation

-#2 Philips Screwdriver or Drill
-Wire cutters/strippers

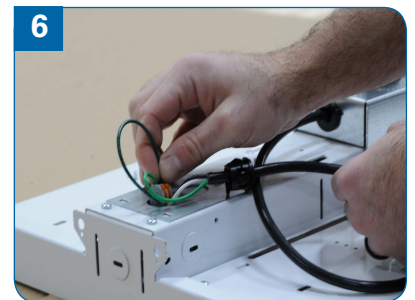
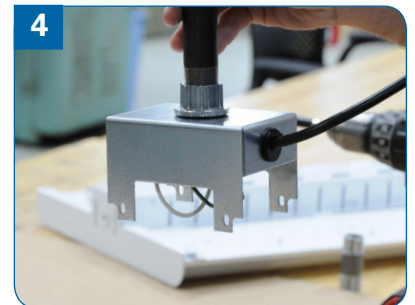
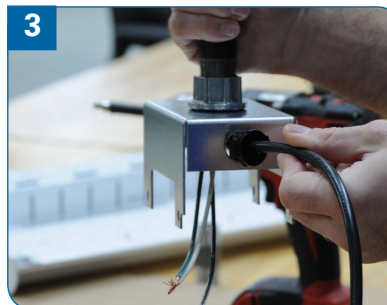
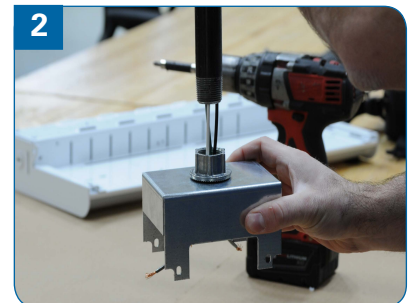
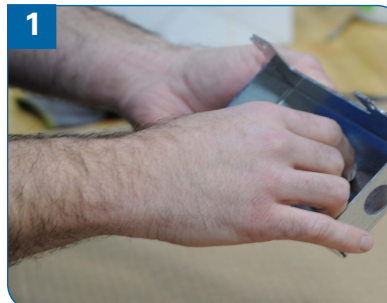
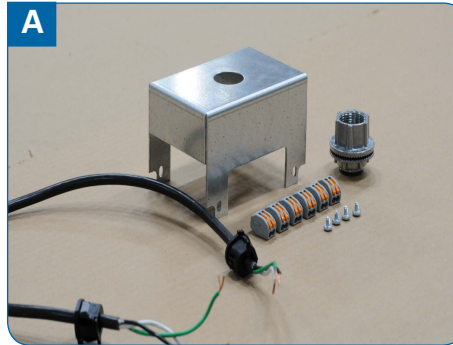


WARNING!

Risk of fire or electric shock. To reduce risk of electrical shock, turn off power supply before installation or servicing.

Step-by-Step Instructions

- 1 Unpack all components listed above.
 - 2 Fasten the conduit fitting to the pendant mount bracket in the pre-punched hole (See Fig. 1 and Fig. 2 for completed installation)
 - 3 Thread the existing conduit/wires into the conduit fitting from Step #2 (See Fig. 2 and Fig. 3)
 - 4 Insert the provided whip wires through the side hole on the pendant mount bracket. Then push the whip strain relief into the hole to secure the whip to the bracket. (See Fig. 4)
 - 5 Make all electrical connections between the incoming power supply and the whip per NEC and local codes.
 - 6 Insert the pendant mount bracket over the driver channel and secure in place using the (4) provided screws (2 screws per side). (See Fig. 4)
- Note: Make sure no wires are pinched and all are tucked beneath the bracket.
- 7 Make electrical connections between the fixture and the opposite end of the whip per NEC and local codes and push all wires through the opening in the fixture access plate. (See Fig. 6)
 - 8 Push the whip strain relief into the access plate hole to secure whip to the fixture. (See Fig. 7)
 - 9 Restore power and test fixture.



HARRIS LED High Bay Star Line, Gen 1

Instruction Number: P-INT-X-430

Use this instruction to add a wireguard to the fixture (4' fixture shown).

Components

- HARRIS High Bay Star Line Fixture
- HARRIS Fixture Wireguard: **HHSL-WG01-KIT** or **HHSL-WG02-KIT** (Kit Components: ((1) fixture wireguard), (4) wireguard clips, 4 set screws, 4 flat washers) **OR**
- HARRIS Fixture Wireguard with Sensor Wireguard: **HHSL-WG03-KIT** or **HHSL-WG04-KIT** ((1) fixture wireguard, (1) sensor wireguard, (6) wireguard clips, 4 set screws, 6 flat washers)

Tools Required for Installation

- #2 Philips Screwdriver or Drill
- Wire cutters/strippers



WARNING!

Risk of fire or electric shock. To reduce risk of electrical shock, turn off power supply before installation or servicing.

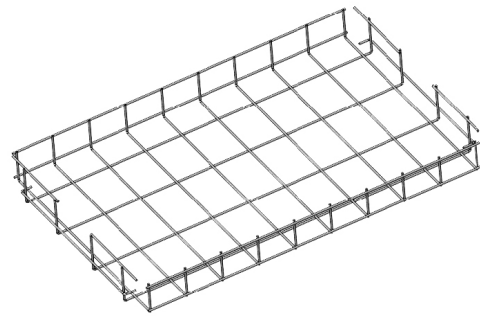
Step-by-Step Instructions

Fixture Wireguard Assembly

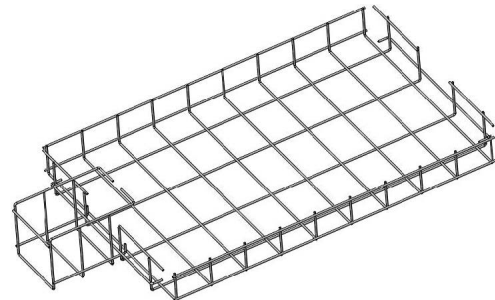
- 1 Set wireguard on a flat surface, center and place the HHSL1 fixture into the wireguard. (See Fig. 1 and Fig. 2)
Note: Fixture should rest on support wire (circled).
- 2 Install wire clip over the end wire in the orientation shown and position the clip within 3/16" of the vertical wire resting flat on the end panel of the HHSL (circled). (Complete this 4 times for all 4 wire clips) (See Fig. 3)
- 3 Fasten clip with flat washer and sheet metal screw. (Complete this 4 times with all 4 washers and screws) (See Fig. 4)
Note: Sheet metal screw will self drill, but pre-drilling a 1/8" pilot hole eases installation.

Fixture Wireguard with Sensor Wireguard Assembly

- 4 Hook the bottom of the sensor wireguard under the support wire of the main guard. The hook will be in between the support wire and HHSL panel and will be positioned to the outside of the nearest vertical wire of the main wireguard. (See Fig. 5)
- 5 Remove both driver channel screws on the end of the fixture with the sensor.
- 6 Slide one wire clip on the end of the sensor wireguard in orientation shown. Repeat for the other side of the sensor wire guard. Align the wire clips over the driver channel holes, insert washer over the clip and secure sensor wireguard in place with removed screws. (See Fig. 6)



HHSL-WG02-KIT Shown



HHSL-WG04-KIT Shown

