

LED Lighting Fixture

SAVE THESE INSTRUCTIONS



BEFORE YOU BEGIN

Read and follow all safety instructions

WARNING

RISK OF FIRE, EXPLOSION AND ELECTRIC SHOCK

- This product should be installed, inspected, and maintained by a qualified electrician only, in accordance with the NEC (National Electric Code) and all local codes.
- Turn off electrical power before inspection, installation or removal.
- Use only UL (or other NRTL) approved wire for input/output connections. Minimum size 18 AWG or 14 AWG for continuous runs.
- Make sure LEDs and drivers are cool to touch when performing maintenance. Make sure the supply voltage is the same as the rated voltage of the luminaire.
- Do not install in a hazardous atmosphere, except where the ambient temperature does not exceed the rated operating temperature of the fixture.
- Keep tightly closed when in operation



Prepare Electrical Wiring



Electrical Requirements

- The LED driver must be supplied with 120 to 277V, 50/60 Hz and connected to an individual, properly grounded branch circuit protected by a 20 Ampere circuit breaker. Use min. 75°C supply.



Grounding Instructions

- The grounding and bonding of the overall system shall be done in accordance with NEC Article 600 and local codes

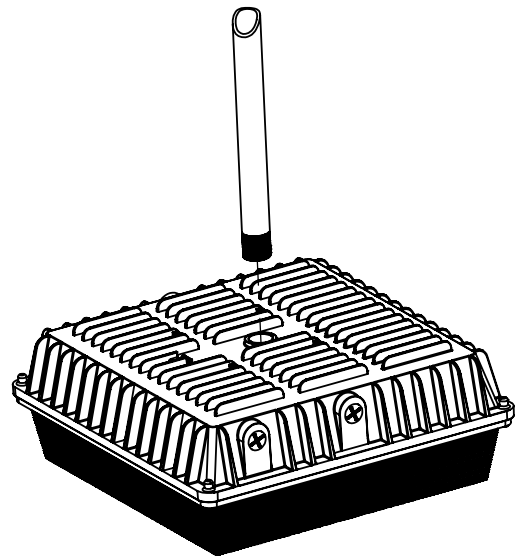
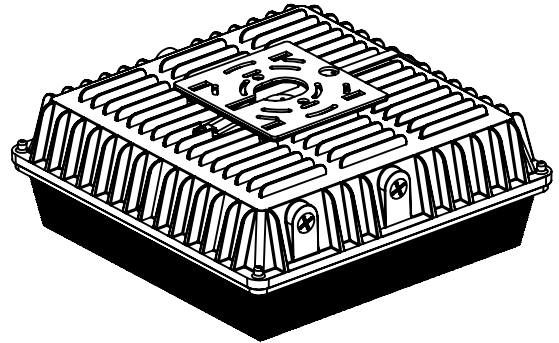
LED Canopy Light

LED Canopy

Installation Guide

Tools Required:
Phillips Screw Drivers
Wire Strippers
Wire Cutters

- Before starting ensure that the power is disconnected.
- Unpack fixture and ensure that there are no damaged parts.
- If mounting on surface:
- The included quick mount is used to be mounted onto a recessed junction box.
- Install the quick mount plate to the junction with 2 screw (Not Provided).
- Hang the fixture to the quick mount on the metal loop on the fixture.
- Connect the power leads with the included wire nuts as seen below. Black to Black(Hot), White to White(Neutral), Green to Green(Ground).
- Push the connection splices into the junction box and secure the fixture onto the quick mount bracket and secure with the set screw.
- If mounting on pendant stem:
- Remove wire plug from top of fixture to expose the NPS thread.
- Feed housing wires through pendant stem.
- Make wiring connections as seem below to junction box Black to Black(Hot), White to White(Neutral), and Green to Green(Ground).
- Thread pendant pipe to top of housing. Be sure to wrap Teflon tape or silicone gel to thread of pipe to prevent moisture from entering.



LED Lighting Fixture

SAVE THESE INSTRUCTIONS



BEFORE YOU BEGIN

Read and follow all safety instructions



WARNING

RISK OF FIRE, EXPLOSION AND ELECTRIC SHOCK

- This product should be installed, inspected, and maintained by a qualified electrician only, in accordance with the NEC (National Electric Code) and all local codes.
- Turn off electrical power before inspection, installation or removal.
- Use only UL (or other NRTL) approved wire for input/output connections. Minimum size 18 AWG or 14 AWG for continuous runs.
- Make sure LEDs and drivers are cool to touch when performing maintenance. Make sure the supply voltage is the same as the rated voltage of the luminaire.
- Do not install in a hazardous atmosphere, except where the ambient temperature does not exceed the rated operating temperature of the fixture.
- Keep tightly closed when in operation



Prepare Electrical Wiring



Electrical Requirements

- The LED driver must be supplied with 120 to 277V, 50/60 Hz and connected to an individual, properly grounded branch circuit protected by a 20 Ampere circuit breaker. Use min. 75°C supply.



Grounding Instructions

- The grounding and bonding of the overall system shall be done in accordance with NEC Article 600 and local codes

LED Canopy Light

LED Canopy

Installation Guide

Tools Required:
Phillips Screw Drivers
Wire Strippers
Wire Cutters

- Before starting ensure that the power is disconnected.
- Unpack fixture and ensure that there are no damaged parts.
- If mounting on surface:
- The included quick mount is used to be mounted onto a recessed junction box.
- Install the quick mount plate to the junction with 2 screw (Not Provided).
- Hang the fixture to the quick mount on the metal loop on the fixture.
- Connect the power leads with the included wire nuts as seen below. Black to Black(Hot), White to White(Neutral), Green to Green(Ground).
- Push the connection splices into the junction box and secure the fixture onto the quick mount bracket and secure with the set screw.
- If mounting on pendant stem:
- Remove wire plug from top of fixture to expose the NPS thread.
- Feed housing wires through pendant stem.
- Make wiring connections as seem below to junction box Black to Black(Hot), White to White(Neutral), and Green to Green(Ground).
- Thread pendant pipe to top of housing. Be sure to wrap Teflon tape or silicone gel to thread of pipe to prevent moisture from entering.

