

Basic Integrated High Bay Sensor



WITH MIDDLE BAY LENS



WITH HIGH BAY LENS



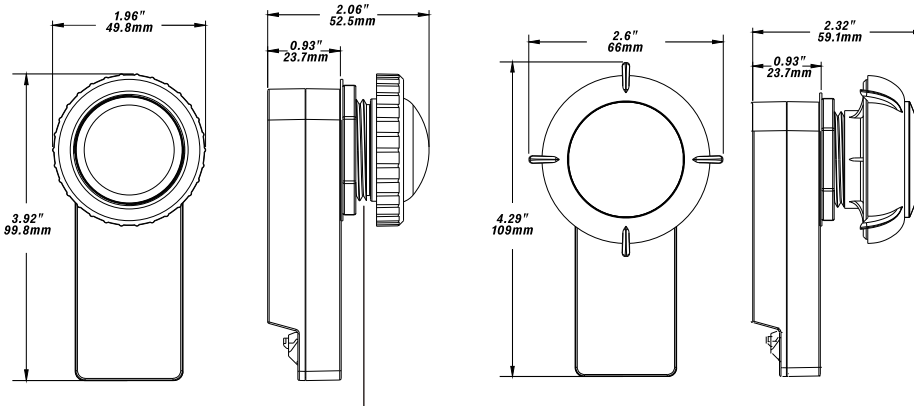
FEATURES

The IFS01R is AC powered integrated High Bay sensor, can be widely used for high bay or other outdoor luminaires. IFS01R suits very common 4/3" knock out hole for OEM manufacturer pre-installation.

- Design for High Bay applications
- Analog Sensor Built-in
- Replacable lens options
- 120-277V Line Voltage input
- IR Remote Controlled by RM51

DIMENSION

Unit:inch/mm



1 inch US standard knockout

AMERICAN INCH PRODUCTS		
Size	T.P.I	Major Dia.
	inch	inch
R1	11	1.3

SPECIFICATIONS

Input Voltage: AC120-277V

Frequency: 50/60Hz

Input Current: 6A Max @ 120V,
2.5A Max @ 277V

Input Power: 700W Max

Output Voltage: AC120-277V

Output Current: 6A Max @ 120V,
2.5A Max @ 277V

Output Power: 700W Max

Dimming: 0-10V DC 10mA Max

Sinking Current: 10mA Max

Housing Material: UL 94-5VA

Detection Range: 32-80ft

Mounting Height: 20-40ft

IR Remote Distance: Max 26'

Indoor/Outdoor Use

Operating Temperature: -30°C to 65°C
-22°F to 149°F

Storage Temperature: -30°C to 85°C
-22°F to 185°F

IP Rating: IP66

Color: White

Warranty: 5 years warranty

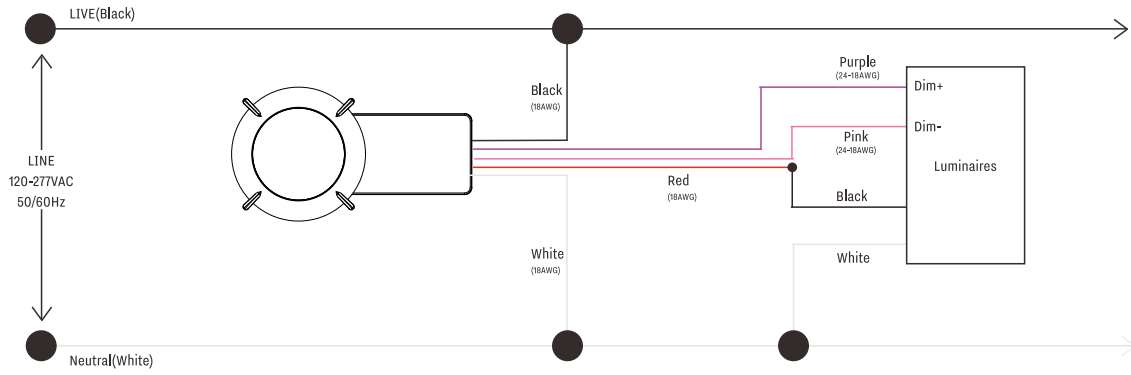
Comply to UL8750,RoHS

Safety: cULus Listed LED Controller

E504054

MODEL	DESCRIPTION
IFS01R	AC Powered Internal PIR & Daylight Harvesting Sensor
MBL1-1.3-W	MBL1 Middle Bay Lens
HBL1-1.3-W	HBL1 High Bay Lens

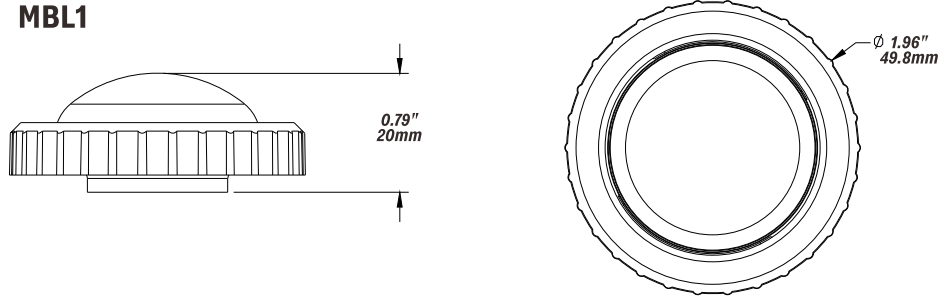
WIRING



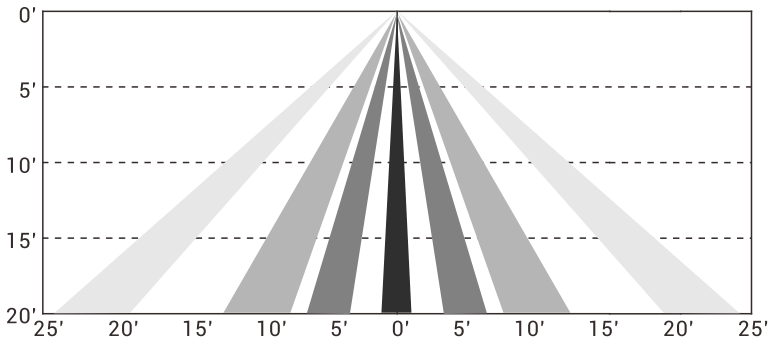
DIMENSION

Unit: inch/mm

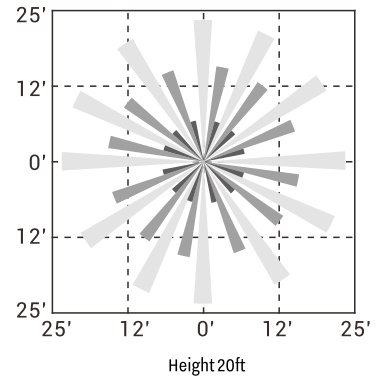
MBL1



Coverage Side View



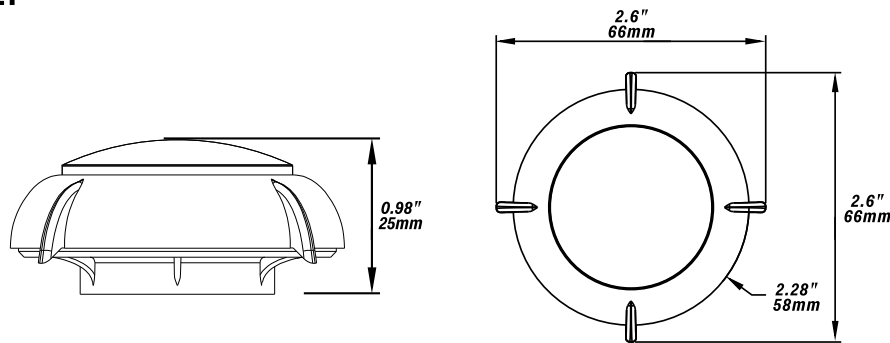
Coverage Top View



DIMENSION

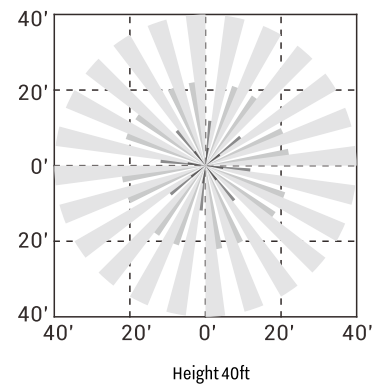
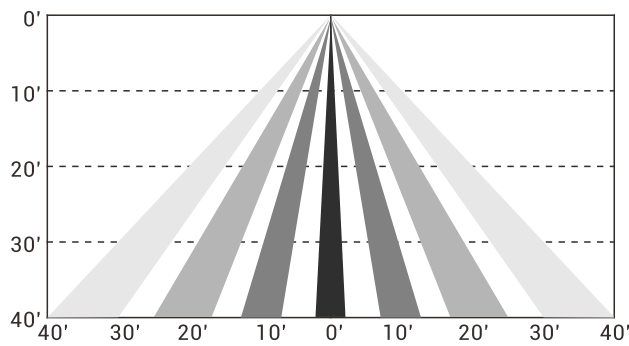
Unit: inch/mm

HBL1

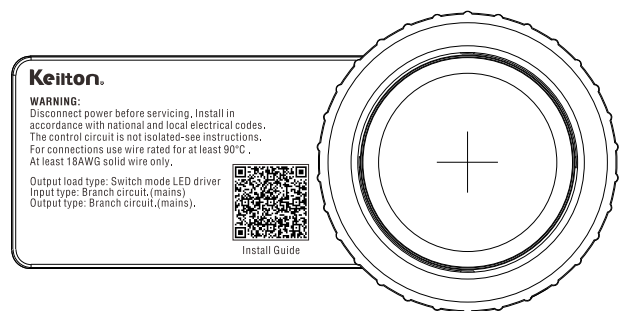
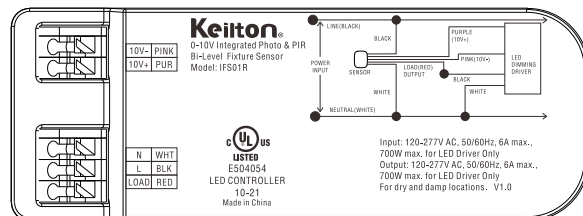


Coverage Side View

Coverage Top View



MARKING



REMOTE INSTRUCTION

Memory Mode (Commissioning) To begin commissioning, follow the steps below:

1. Select either A, B, C, D.
2. Indicator lights on the remote will flash to indicate the current saved settings.
3. Settings can be configured by pressing appropriate buttons in the highlighted gray area of the remote. (TRIM-LEVEL, SENSITIVITY, HOLD TIME, STANDBY DIM, STANDBY TIME, and PHOTOCCELL). Review selected settings and make changes as necessary.
4. Point IR remote to desired luminaire for configuration and press " SEND".
5. If configuration is successful, luminaire will flash two times suggesting settings are saved. Any parameter change to the current saved settings on A to F will override previous settings and will be automatically saved on the remote. If configuring multiple luminaires, select the configured memory mode A to E then follow steps 4 and 5.

*** **E Mode** allows visual adjustment to choose the desired dimming Level.

Continuous Adjustment Mode or Daylight Harvesting (F Mode) enables dimmability in response to daylight availability.

1. Point IR remote to desired luminaire.
2. Press " ON" then press DIM+ or DIM- to adjust dimming level.
3. Press " F", indicator lights on the remote will indicate current saved settings. Note: only TRIM-LEVEL, SENSITIVITY, and HOLD TIME can be selected for Daylight Harvesting settings.
4. Review selected settings and make changes as necessary. Press " SEND".
5. If configuration is successful, luminaire will flash twice to confirm setting saved. If configuring multiple luminaires, select the configured DAYLIGHT HARVESTING settings then follow steps 4 and 5.

Reset Mode

Default Settings: Motion --> 100%, No Motion >= 5min --> DIM to 30%, No Motion >= 60min --> Off

ON	Turns ON Luminaires
OFF	Turns OFF Luminaires
TEST	Test mode will last 5 mins then return to previous setting Test mode will hold time 2 seconds SDL 50% and standby time 2 seconds
RESET	Trim-High=100%,sensitivity=High,T1=5min,Standby Dim=30%,T2=60min,Photocell=OFF
DIM+/-	Remote will manually dim luminaire up or down by increments of 0.5volts. Must be smooth dimming if holding dimming button.
TRIM-LEVEL	Set Maximum threshold value 50/75/100%
SENSITIVITY	OFF(PIR OFF Enter PC ON/OFF function)/LOW(50%)/HIGH (100%)
HOLD TIME	(time of no occupancy after which fixture goes to standby) 30s / 5min /15min / 30min
F MODE DAYLIGHT HARVESTING	(Enable/Disable) Measure and set feature to allow the fixture to maintain a light level. If turned ON.
STANDBY DIM	Select any standby dim level 0/10/30/50%
STANDBY TIME	Standby time -10s / 5min/15min / 30min /1h/∞. "∞" means the stand-by time is infinite and the fixture is effectively controlled by the daylight sensor)
PHOTOCCELL	LOW (1fc) / HIGH (50fc)/CAL Collecting The current Lux Level OFF
MODE	Set settings to a Program profile A to F
SEND	Send settings to sensor
DEFAULT MODE A	Trim-High=100%,sensitivity=low,T1=30min,Standby Dim=50%,T2=∞,Photocell=CAL
DEFAULT MODE B	Trim-High=100%,sensitivity=low,T1=30min,Standby Dim=50%,T2=15min,Photocell=CAL
DEFAULT MODE C	Trim-High=100%,sensitivity=low,T1=30min,Standby Dim=50%,T2=15min,Photocell=OFF
DEFAULT MODE D	Trim-Low=50%,sensitivity=low,T1=30min,Standby Dim=50%,T2=30min,Photocell=CAL
DEFAULT MODE E	Manual Mode,Trim-High=100%
DEFAULT MODE F	Daylight Harvesting,Trim-Low=50%,sensitivity=low,T1=15min

