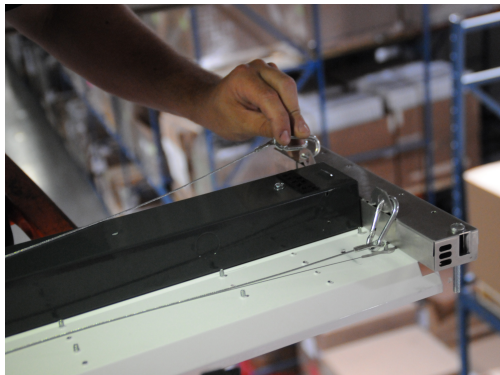
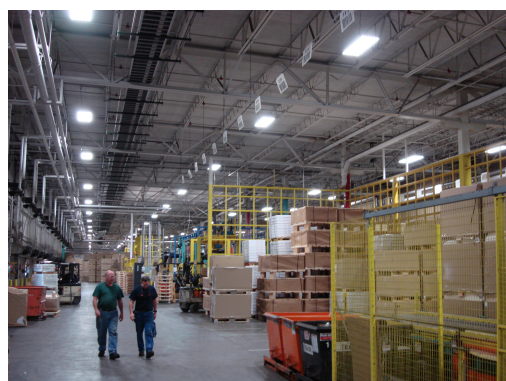




# Interior Fixture Hanger

## Application Guide





# Contents

OESH101BRA, OESH108RA, H113.....	1
H114, H117, H119, H120 .....	2
H126, H127, H130, OESH200 .....	3
FMCM, FMCM3-5, PMRMCM-3/4, PMRMCM-3/4-EW .....	4
PMRMEN-3/4, PMRMEN-3/4 AW, AMB-SM .....	5
LED-HBHC2-PMR01-KIT, LED-LSLH-PM01-KIT, LED-VTOD1-RMBSS-KIT .....	6
Cables and Wire Hangers .....	7
Proprietary Hangers.....	8



**Orion supplied hanging devices are NOT warranted or recommended for use in environments:**  
1). that have corrosive agents present that may degrade the integrity of the hanging device.  
2). where movement of the fixture may occur while the hanging device is supporting the fixture.

## OESH101BRA, OESH108RA, H113

### OESH101BRA



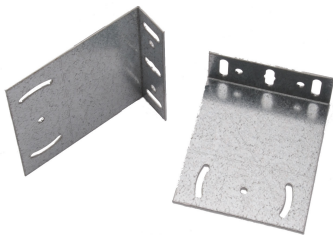
Part Number	OESH101BRA
Application	Hang fixture from existing eyebolt.
Description	UMB on eye bolt. Requires hangers or cables >30 in.
Includes	(1) Bracket, (1) flanged nut, (1) 7/16-14 bolt, and (2) 7/16 washers.
Compatible Fixture Series	All high bay industrial fixtures.

### OESH108RA



Part Number	OESH108RA
Application	Hang fixtures from existing pendent.
Description	Pendent mount. Requires hangers or cables >30 in.
Includes	(2) UBH brackets, (2) ¼-20 bolts, (2) ¼-20 nylock nuts, silicon carbide screen gripper cloth, (1) ¾" conduit lock nut and (1) ½" conduit lock nut.
Compatible Fixture Series	All high bay industrial fixtures.

### H113

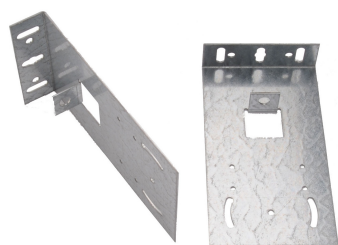


Part Number	H113SET
Application	Rigid mount enclosed fixtures to ceiling or other fixed structural elements.
Description	BRACKET SET: Rafter mount.
Includes	(2) Brackets, rafter mount; (4) 8x32 x ¾ TPP screws.
Compatible Fixture Series	Enclosure style fixtures.



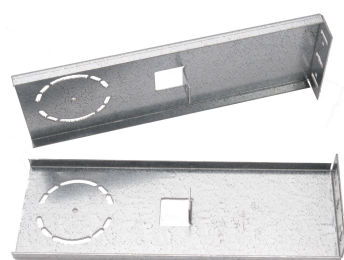
## H114, H117, H119, H120

### H114



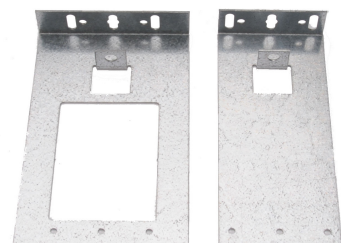
Part Number	H114SET
Application	Rigid mount fixtures to ceiling or other fixed structural elements. Taller than H113.
Description	BRACKET SET: Flush mount.
Includes	(2) Flush mount brackets, (4) 8x32 x 3/4 TPP screws.
Compatible Fixture Series	Enclosure style fixtures.

### H117



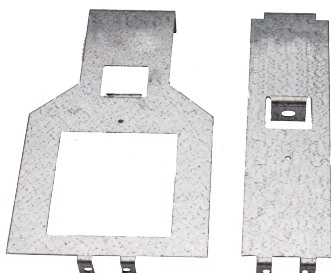
Part Number	H117SET
Application	Rigid mount fixtures to fixed structural elements that need fixture to be tilted. Up to 72° of tilt angle to fixture for sloped roof lines. Taller than H113 and H114.
Description	BRACKET SET: Flush mount, with 72° tilt adjustment.
Includes	(2) Flush mount brackets, (4) 8x32 x 3/4 TPP screws.
Compatible Fixture Series	Enclosure style fixtures.

### H119



Part Number	H119SET
Application	Flush mount bracket for fixtures with DCD or OESC sensor window.
Description	Flush mount set with accessory window (allows fixture to be hung with opening for Orion Motion Sensor).
Includes	(1) Flush mount fixture bracket with accessory window; (1) opposite bracket; (4) 8x32 x 3/4 TPP screws; (4) Phillips pan head self-drilling screws.
Compatible Fixture Series	Enclosure style fixtures.

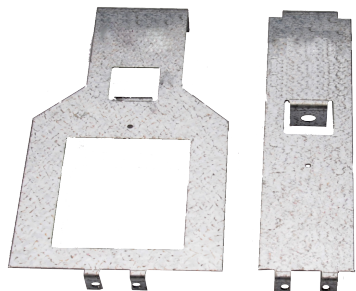
### H120



Part Number	H120SET
Application	Flush mount bracket for fixtures with DCD or OESC sensor window.
Description	Flush mount set with accessory window (allows fixture to be hung with opening for Orion Motion Sensor).
Includes	(1) Bracket with accessory window; (1) opposite bracket, for fixtures with even # of lamps, (4) 8x32 x 3/8 TPP screws.
Compatible Fixture Series	Open style fixtures.

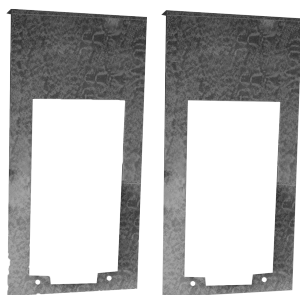
## H126, H127, OESH200

### H126



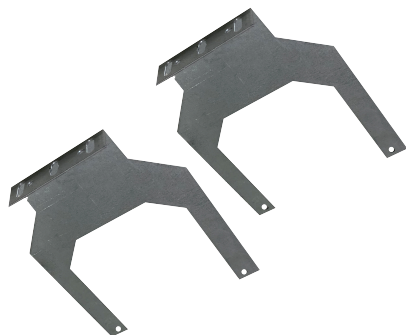
Part Number	H126SET
Application	Rigid mount fixture to building structure.
Description	Flush mount set with accessory window (allows fixture to be hung with opening for Orion Motion Sensor).
Includes	(1) flush mount bracket for even # lamps, (1) flush mount bracket with accessory window, (6) 8-32 x 3/8" TPP screws.
Compatible Fixture Series	Open style fixtures.

### H127



Part Number	H127SET/H127SET-W
Application	In addition to sensor, two accessory windows allow power pack removal without removing fixture bracket. Usually ordered in the color white (H127SET-W).
Description	Flush mount set with accessory window (allows fixture to be hung with opening for Orion Motion Sensor), 10".
Includes	(2) LEDE style flush mount brackets with accessory window; (6) 8-32 x 3/8" TPP screws.
Compatible Fixture Series	Enclosure style fixtures.

### H130



Part Number	H130SET
Application	Rigid mount fixture to building structure. Comes in raw/galvanized finish standard. Usually ordered in the color dark gray (H130SET-DG)
Description	Rigid/Flush mount bracket with accessory window on each bracket.
Includes	(2) HBHS1 style flush mount brackets with accessory window; (8) 8-32 x 3/8" TPP screws.
Compatible Fixture Series	HBHS1 4' (A1-F1 lumen packages)

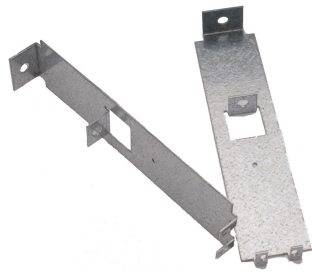
### OESH200



Part Number	OESH200
Application	Adjustable height flush mount bracket. Allows approximately 5" of vertical adjustment. Can be used to tilt fixture or when a customer wants to flush mount on a pitched roof/ceiling.
Description	Flush mount set, adjustable (allows fixture to be hung closer or farther and also at an angle from the ceiling).
Includes	(2) Lower brackets; (2) Upper brackets, flush mount; (2) Wing nuts, 5/16" washer base; (2) 5/16-18x1/2" serrated hex flange bolt; (4) 8x32 x 3/8 TPP screws.
Compatible Fixture Series	Open style fixture.

## FMCM, FMCM3-5, PMRMCM-3/4, PMRMCM-3/4-EW

### FMCM-KIT



Part Number	FMCM-KIT
Application	Rigid mount fixtures to ceiling or other fixed structural elements.
Description	BRACKET SET: Flush mount.
Includes	(2) Flush mount type brackets, even # of lamps; (4) 8-32 x 3/8" pan-head screws.
Compatible Fixture Series	Open style fixtures.

### FMCM3-5



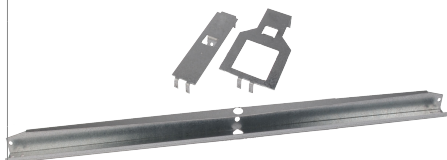
Part Number	FMCM3-5-KIT
Application	Rigid mount fixtures with odd number of lamps (ex: 3 lamp fixture) to ceiling or other fixed structural elements.
Description	BRACKET SET: Flush mount, steel.
Includes	(2) Flush mount CM type brackets, odd # lamps; (4) 8-32 x 3/8" pan-head screws.
Compatible Fixture Series	Open style fixtures.

### PMRMCM-3/4



Part Number	PMRMCM-3/4
Application	Mount fixtures to existing pendent. More rigid than H108.
Description	Pendent Mount, Rigid Mount Set, 3/4" pendent size, for use with open style fixtures, instruction sheet P-INT-X-137.
Includes	Pendent bar for 3/4" pipe, 2 flush mount brackets; U-bolt with Nylock nuts; fasteners; 3/4" conduit lock nut.
Compatible Fixture Series	Open style fixture. Contact your Orion representative to ensure fixture length works for bracket type.


### PMRMCM-3/4-EW




Part Number	PMRMCM-3/4-EW
Application	Mount open style fixtures with an even number of lamps and motion sensor to existing pendent for a rigid mount.
Description	Pendent mount, rigid mount set with accessory window, (allows fixture to be hung with opening for Orion Motion Sensor) 3/4" pendent size.
Includes	Pendent bar for 3/4" pipe, 1 flush mt bracket; 1 flush mount bracket with accessory window; U-bolt with Nylock nuts; fasteners; 3/4" conduit lock nut.
Compatible Fixture Series	Open style fixtures. Contact your Orion representative to ensure fixture length works for bracket type.

## PMRMEN-3/4, PMRMEN-3/4 AW, AMB-SM


### PMRMEN-3/4

	Part Number	PMRMEN-3/4
	Application	Mount fixture to existing pendent.
	Description	Pendent mount, rigid mount set, 3/4" pendent size, for use with enclosed style fixtures.
	Includes	Pendent bar for 3/4" pipe; 2 flush mount brackets; U-bolt with Nylock nuts; fasteners; 3/4" conduit lock nut.
	Compatible Fixture Series	Enclosure style fixtures. Contact your Orion representative to ensure fixture length works for bracket type.


### PMRMEN-3/4-AW

	Part Number	PMRMEN-3/4-AW
	Application	Mount fixture with sensor to existing pendent.
	Description	Pendent MOUNT BRACKET: Rigid mount with accessory window for enclosure fixtures, 3/4" pendent size, galvanized, for use with small channels only.
	Includes	Pendent bar for 3/4" pipe, 1 flush mount bracket; 1 flush mount bracket with accessory window; U-bolt with Nylock nuts; fasteners; 3/4" conduit lock nut.
	Compatible Fixture Series	Enclosure style fixtures. Contact your Orion representative to ensure fixture length works for bracket type.

### PMRM-HBIF2-DG-3/4-AW

	Part Number	PMRM-HBIF2-DG-3/4-AW
	Application	Mount fixture with sensor to existing pendent.
	Description	Pendent MOUNT BRACKET: Rigid mount with accessory window for HBIF2, 3/4" pendent size, dark gray powdercoated
	Includes	Pendent bar for 3/4" pipe, 2 flush mount bracket with accessory window; U-bolt with Nylock nuts; fasteners; 3/4" conduit lock nut.
	Compatible Fixture Series	HBIF2, HBIF2 HL

### AMB-SM

	Part Number	AMB-SM#KIT
	Application	Enables surface mount fixtures to be mounted to ceiling without having to open the fixture and remove reflectors. Order specific size for 4, 6, or 8 lamp fixtures.
	Description	BRACKET: Angle mount, SM#, bolt-on, raw.
	Includes	2 angle brackets; fasteners not included.
	Compatible Fixture Series	SM, SMF

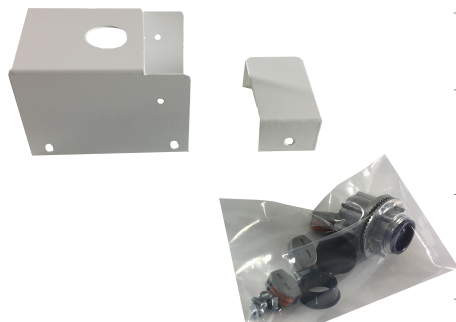
## LED-HBHC2-PMR01-KIT, LED-VTOD1-RMBSS-KIT

### LED-HBHC2-PMR01-KIT



Part Number	LED-HBHC2-PMR01-KIT, LED-HBHC2-PMR01-KIT-WH
Application	Rigid mount pendent bracket kit for HBHC2.
Description	RIGID Pendent MOUNT BRACKET KIT: For use with hardwire fixtures only. Cannot be used with an external transformer box and standard OESC style sensors. Available in raw aluminum or white powdercoat finish.
Includes	Kit Includes Pendent Box and Cover, Pendent Assembly and Fixture-Bracket Installation Hardware, (3) Conduit Lock Nuts, and Installation Instructions Conduit/pendent material and mounting hardware supplied by customer.
Compatible Fixture Series	HBHC2

### LED-LSLH-PMR01-KIT



Part Number	LED-LSLH-PMR01-KIT
Application	Rigid mount pendent bracket kit for 2' and 4' LSLH1 fixtures.
Description	RIGID Pendent MOUNT BRACKET KIT: For use with hardwire fixtures only. Cannot be used with an external transformer box and standard OESC style sensors. Available in raw aluminum or white powdercoat finish.
Includes	Kit Includes Pendent Box and Cover, Pendent Assembly and Fixture-Bracket Installation Hardware, (3) Conduit Lock Nuts, and Installation Instructions Conduit/pendent material and mounting hardware supplied by customer.
Compatible Fixture Series	LSLH1

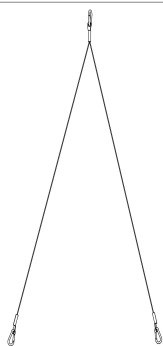
### LED-VTOD1-RMBSS-KIT



Part Number	LED-VTOD1-RMBSS-KIT
Application	Rigid mount bracket kit for 2' and 4' VTOD1 fixtures.
Description	RIGID MOUNT BRACKET: Mounts approx. 0.5" from the mounting surface to the back of the fixture and approx. 6.5" from the mounting surface to the bottom of the fixture. Stainless steel.
Includes	(2) Rigid mount brackets with (2) locknuts attached per bracket and installation instructions. Must order LED-VTOD1-RMBSS-KIT-TEMPLATE separate for mounting installation, one needed per location.
Compatible Fixture Series	VTOD1 Standard, VTOD1 BiLevel

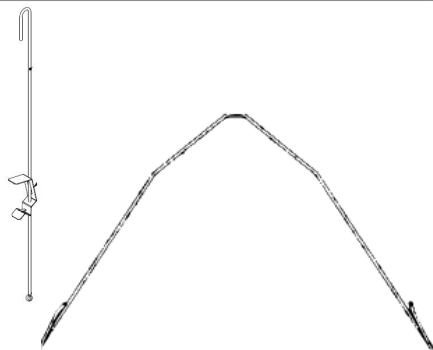
## Cables and Wire Hangers

### ECAB



Part Number	-ECAB31, -ECAB19
Application	Hanging open or enclosed style fixtures.
Description	31" or 19", Y-style with 3 eyelets and 3 pieces 3/16 snap hooks. Two needed per fixture at a minimum.
Includes	Cables ordered individually.
Compatible Fixture Series	HBHC, HBAC, HBIF, HBIF HL, All fixtures with tab mounting locations, VTON, VTOD

### Adjustable Wire Hanger



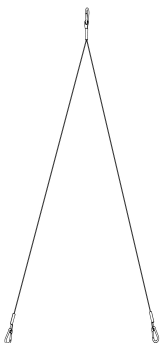
Part Number	Various styles and sizes available; contact your Orion representative.
Application	Hang open and enclosed style fixtures.
Description	WIRE HANGER: Adjustable, fixture hanging height (length), galvanized.
Includes	One wire hanger assembly. Order two per fixture. May also be ordered with the fixture by including length in part number.
Compatible Fixture Series	HBHC, HBAC, HBIF, HBIF HL, All fixtures with tab mounting locations, VTON, VTOD. <b>IMPORTANT NOTE:</b> Not for use with HBIF2 HL.

### Hanging Cable Set



Part Number	HW-FC008
Application	Can be used for open or enclosed fixtures.
Description	HANGING CABLE SET OF TWO: 180" loop attachment with 2 snap hook ends.
Includes	Adjustable length hanging cable. Y-Fit with 2 snap hooks attached.
Compatible Fixture Series	HBHC, HBAC, HBIF, HBIF HL, All fixtures with tab mounting locations, VTON, VTOD

### Additional Safety Hanging Kit

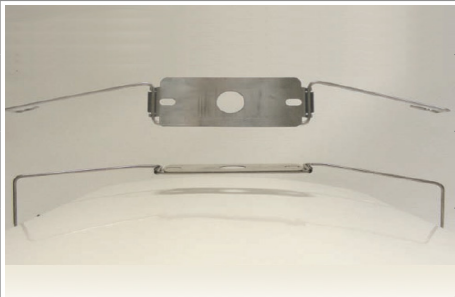


Part Number	HBIFHL-SCBL-KIT, LED-HB-SCBL01-KIT, LED-WTLED2-SCBL-KIT
Application	HBIF2 HL, HBHC2, WTLED2
Description	31" or 19", Y-style with 3 eyelets and 3 pieces 3/16 snap hooks.
Includes	Kit ordered individually.



## Proprietary Hangers

### CT4-CM1.25



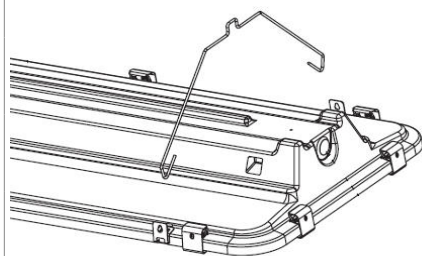
Part Number	CT4-CM1.25
Application	Fixture ceiling mount.
Description	SLP BRACKET: Stainless Steel Ceiling Mount System, 2 per fixture
Includes	One bracket. Order two per fixture.
Compatible Fixture Series	PB, VTOD 2' & 4'

### EHB-MNTBRK



Part Number	EHB-MNTBRK
Application	Ceiling mount PBA fixture.
Description	ALP BRACKET: Polybody, ceiling/stem mount bracket.
Includes	One bracket. Order two per fixture.
Compatible Fixture Series	PBA

### EHB-Hanger



Part Number	EHB-Hanger
Application	Wire hanger.
Description	CUSTOM ALP HANGER: Polybody hanger.
Includes	One bracket. Order two per fixture.
Compatible Fixture Series	PBA

### CT2-MB-2L



Part Number	CT2-MB2L
Application	Flush mount fixtures to ceiling or other building structure.
Description	SLP BRACKET: Stainless steel, mounting, wide.
Includes	Two brackets included with 4' fixture. Three brackets included with 8' fixture.
Compatible Fixture Series	SF, xVT. SMF, PG, VTON 4' & 8'

