

SPTS1 EXTERNAL DRIVER

Features and Specifications

Applications

Versatile slim design lends itself for many low bay lighting applications including retail, office and specific task areas in warehouse or industrial settings for interior applications.

Features

- Suspended mounting method available
- Dimming 0-10v

Construction

Extruded aluminum housing with lens. Fixture model has cord mounted from the side of the driver channel

Certification & Listings

- UL Damp Listed

Electrical

Available in 120-277v

Rated Life

100,000 hours per L70

Operating Temperature

Please see performance table for fixture details.

- D1: -4°F to 104°F [-20°C to 40°C]
- E1: -4°F to 95°F [-20°C to 35°C]

Warranty

Orion LED APOLLO® class fixtures are covered by a five-year limited warranty. Accessories and individual components are covered by separate OEM supplier warranties.



Required Ordering Information

1	Select	<u>SPTS1</u>
Series		
SPTS1	Suspended Series Slimline Gen 1	

2	Select	----
Nominal Lumens ¹		
D1	7000 lm	
E1	9000 lm	

3	Select	<u>UNV</u>
Voltage		
UNV	120-277v	

4	Select	---
Driver Type		
NDX	Non-Dimming	
FDX	Full-Dimming ²	

5	Select	<u>EXT</u>
Fixture Model Type		
EXT	External Driver	

6	Select	<u>OM</u>
Lens Type		
OM	Opaque Matte	

7	Select	---
CRI/Color Temperature		
840	80 CRI; 4000K	
850	80 CRI; 5000K	

8	Select	----
Power Supply		
06W	6' White whip	
12W	12' White whip	
06BW	6' Black whip	
12BW	12' Black whip	

9	Select	---
Fixture Sensor		
SS20	End mounted sensor for 20 foot or less ceiling applications.	

Accessories [Sold Separately]

Mounting Option

- **HW-FC003:** 180" cable kit works with standard mounting clips. Kit includes: 2 hanging cables with toggle and 2 mounting clips (attached to fixture).



SPTS1 EXTERNAL DRIVER

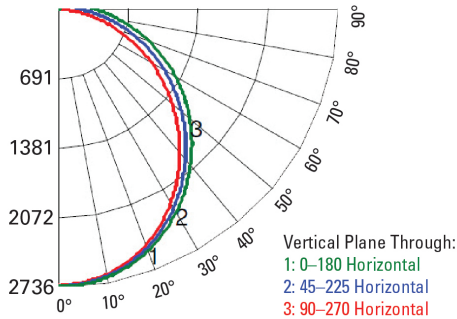
Physical and Performance Information³

Series	Nominal Lumen Code	Input Voltage	Input Power	Input Current	Power Factor	Light Output	Lumens per Watt	Operating Temp	CCT	CRI	Width	Length	Height ⁴	Weight
SPTS1	D1	120v	70 w	0.583 A	≥0.99	7474 lm	107	[-20°C to 40°C]	5000K	≥80	3.34"	48.0"	4.75"	7 lbs.
SPTS1	D1	277v	69 w	0.249 A	≥0.93	7474 lm	108	[-20°C to 40°C]	5000K	≥80	3.34"	48.0"	4.75"	7 lbs.
SPTS1	D1	120v	70 w	0.583 A	≥0.99	7413 lm	106	[-20°C to 40°C]	4000K	≥80	3.34"	48.0"	4.75"	7 lbs.
SPTS1	D1	277v	69 w	0.249 A	≥0.93	7413 lm	107	[-20°C to 40°C]	4000K	≥80	3.34"	48.0"	4.75"	7 lbs.
SPTS1	E1	120v	88 w	0.733 A	≥0.99	8832 lm	100	[-20°C to 35°C]	5000K	≥80	3.34"	48.0"	4.75"	7 lbs.
SPTS1	E1	277v	87 w	0.314 A	≥0.95	8832 lm	102	[-20°C to 35°C]	5000K	≥80	3.34"	48.0"	4.75"	7 lbs.
SPTS1	E1	120v	88 w	0.733 A	≥0.99	8532 lm	97	[-20°C to 35°C]	4000K	≥80	3.34"	48.0"	4.75"	7 lbs.
SPTS1	E1	277v	87 w	0.314 A	≥0.95	8532 lm	98	[-20°C to 35°C]	4000K	≥80	3.34"	48.0"	4.75"	7 lbs.

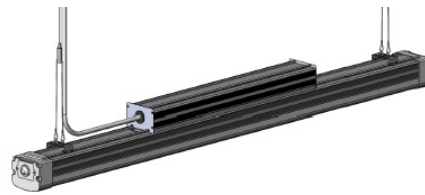
Photometrics

Visit orionlighting.com for all .IES files

SPTS1090L E1 5000K



Cord/Hanging Methods



SPTS1D1, SPTS1E1 models

Fixture Option - Factory Wired



SS20 End mounted sensor for 20 foot or less ceiling applications. See [vendor data sheet](#) for application range details.

Additional Specification Information

- ¹Actual lumens may vary.
- ²Third party sensors needed for dimming controlled fixtures.
- ³Actual performance may vary by up to ±10% of values.
- ⁴Driver channel included in height.