

## APOLLO® Harsh High Bay, Gen 1

Instruction Number: P-INT-X-446

Product Series: AHHA1



### WARNING!

Risk of fire or electric shock. To reduce risk of electrical shock, turn off power supply before installation or servicing.

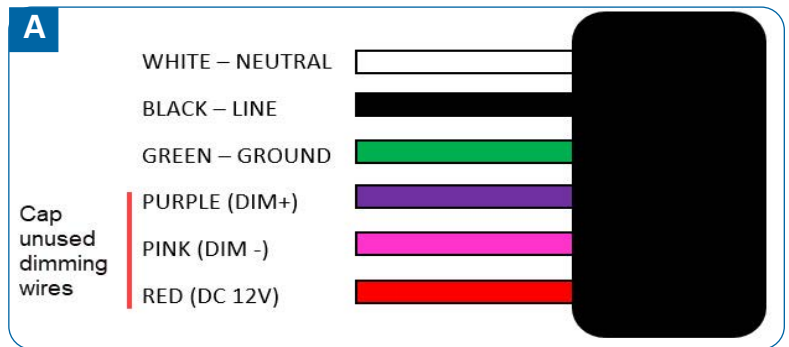
1. Field installers are responsible for recognizing specific site requirements and making adjustments to assure a complete, functional installation.
2. Make all power connections using UL listed components.
3. Electrical connections must be made by a qualified electrician and in accordance with NEC and local codes.
4. Do not test luminaire using electric generator before installation.
5. Proper grounding is required to ensure safety.
6. Please wear gloves to avoid injury before installation.
7. If any smoke or spark of the wire happens, please turn off the power immediately and notify relevant personnel.
8. Check if there is any damage during shipping. If so, contact manufacturer immediately .
9. Read the installation instruction carefully to check whether all the accessories are included. After confirmation, then install the fixture according to installation steps.

### Tools Required for Installation

- Cordless drill
- Wire stripper/cutter
- Wire nuts

### Wiring Instruction

- 1 Turn off power supply before installation. Review product label for voltage and amperage load per fixture and use minimum 75°C supply wires.
- 2 Make all electrical connections per NEC and local codes. For dimming wires, use class 1 wiring methods. Cap each dimming wires separately if not used. (See Fig. A)
- 3 Restore power to fixture.



### Flexible Conduit Assembly Instruction (AHHA-FC-06)

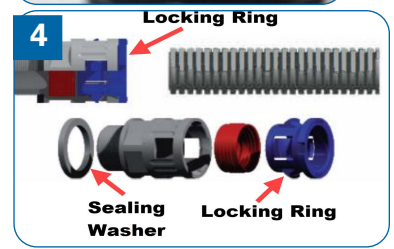
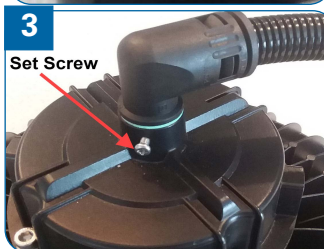
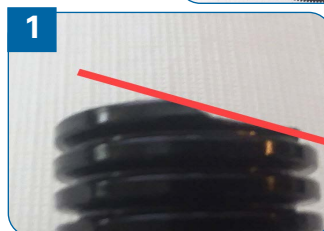
#### Kit Includes:

(1) 90° Adapter 1/2" NPT, (1) Straight Adapter 1/2" NPT, (1) Nut 1/2" NPT, (2) Sealing Washers, 6' Flexible Conduit



#### WARNING! Flexible Conduit must be installed to honor warranty against oils and solvents

- 1 Define conduit length needed from fixture to electrical junction box. Cut extra length of unnecessary conduit. **WARNING! TO ATTAIN IP PROTECTION:** Cut conduit between two ribs. More than one rib should not be passed while cutting the conduit (See Fig. 1 and Fig. 2)
- 2 Route the electrical wires (see Fig. A) through a sealing washer and the 90° conduit adaptor.
- 3 Loosen the set screw (See Fig. 3) and Screw on the 90° adaptor to fixture center 1/2" NPT hole. Tighten for proper seal using the provided sealing washer. Tighten back set screw to lock adaptor in position.
- 4 Continue routing the electrical wire through flexible conduit.
- 5 Push conduit into the 90° adapter until it cannot snap-in anymore and the adapter can only be turned with force. The snap-in-sleeve with lock between the conduit ribs. **Note:** To disassemble press the ring on the conduit adapter, you might hear a click, then pull the conduit out with a slight twist. The conduit adapter is ready for use again. (See Fig. 4)
- 6 Assemble straight adapter to electrical junction box and route electrical wires through straight adapter into junction box.
- 7 Secure straight adapter to junction box per NEC and facility requirements.



## APOLLO® Harsh High Bay, Gen 1

Instruction Number: P-INT-X-446

Product Series: AHHA1

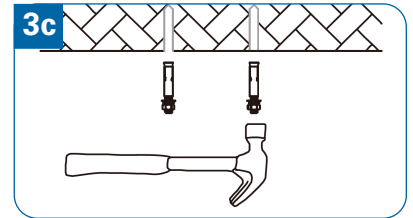
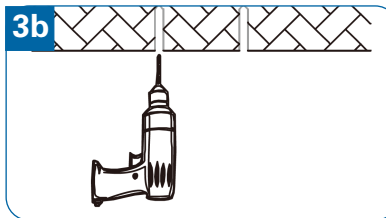
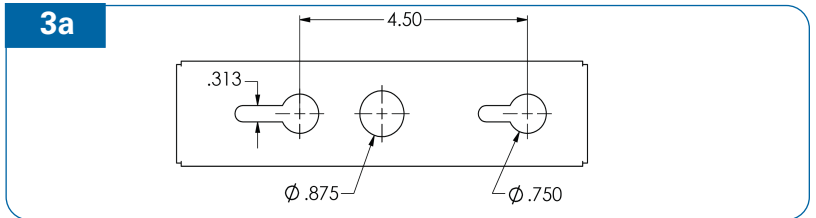
### U Bracket Mount Assembly

- 1 Unassemble the U Bracket kit components ((2) small fixture mount brackets, U bracket, Hardware: (6) M5 socket head screws, (8) washers, (2) M4 socket head screws, (2) M5 nuts, (2) M4 nuts). See Fig. 2a for bracket.
- 2 Attach the (2) small fixture mount brackets to the luminaire on either side using (4) M5 socket head screws and (4) washers - (2) screws and (2) washers per bracket.
- 3 Attach the U Bracket to the outside of the (2) small fixture mount brackets using (2) M5 socket head screws and (2) washers through the center hole. Tighten with (2) M5 nuts.
- 4 Use the (2) M4 socket head screws, (2) washers, and (2) nuts to lock the fixture at desired angled position (max 100° total angle adjustment).



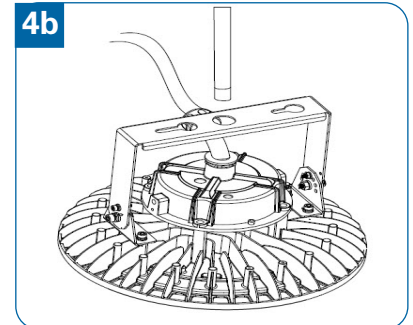
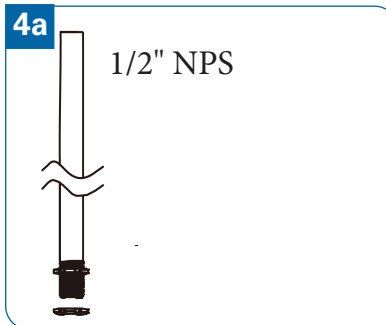
### U Bracket Mount Surface Instruction

- 1 Mark drilling locations on the mounting surface and pre-drill mounting holes (See Fig. 3a and 3b).
- 2 Use a hammer to install the provided expansion bolts in the pre-drilled holes. (See Fig. 3c)
- 3 Insert the U bracket over the expansion bolts and tighten the provided nuts onto the U Bracket to secure it in place. Adjust fixture to desired position as mentioned in the U Bracket Mount Assembly.
- 4 Make all electrical connections per NEC and local codes.



### U Bracket 1/2" Conduit Installation

- 1 Remove the nut from the threaded conduit (See Fig 4a). (Note: 1/2" NPS not provided)
- 2 Insert the U Bracket through the .875" center holes. Reinstall the nut removed in Step 1 (See Fig. 4b)
- 3 Adjust fixture to desired position as mentioned in the U Bracket Mount Assembly and make all electrical connections per NEC and local codes.



### Hook (AHHA-PM-12) with U Bracket Installation



**WARNING! This Hook is for mounting with U Bracket only. This Hook does not fit to fixture center thread.**

- 1 Assemble U Bracket kit to fixture per instructions above.
- 2 (See Fig. 5a for AHHA-PM-12 components) Place Hook thread through U-Bracket center hole.
- 3 Slide Locking Washer under U-Bracket.
- 4 Tighten with Nut provided. (See Fig. 5b for completed install)

