

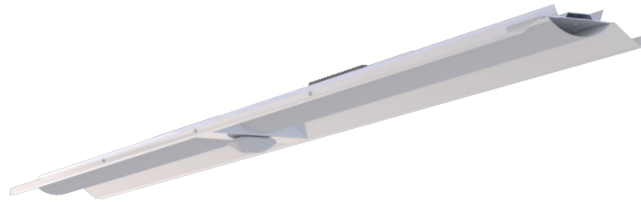
## LSAR1

### Applications

The ISON™ LSAR1 is ideal for retrofitting existing linear fluorescent high bay fixtures to LED. For use in applications such as retail, manufacturing, distribution, and warehouses facilities.



LSAR14A1UNVFDXXLFA840LT  
[4' Module shown for a 4' Retrofit]



LSAR18D1UNVFDXXLFA840LT-EN  
[8' Module shown with Sensor for a 8' Retrofit]

### Features

- Available in 4 ft. and 8 ft. fixture lengths
- Frosted acrylic matte contoured lens available
- LED engine made of lightweight aluminum, with pre-coated white finish for better thermal dissipation
- Retrofit light engine is designed to fit over existing linear fluorescent high bay fixture channel and screws to existing channel for ease of retrofit install
- Bulk pack standard. Single pack available
- Enlighted Control Option available for IoT applications

### Electrical

- Available in 120v-277v, 347v and 480v
- Full Dimming (0-10v) fixtures

### Ambient Operating Range

See ambient operating table on page 2

### Fixture Certification & Listings

- UL Classified
- Buy American Act Compliant
- DesignLights Consortium® premium qualified luminaire
- Visit the [DLC QPL](#) for listed models

### Patent Information

Orion is serious about intellectual property. This product may be covered by one or more patents. Patent information available at <http://www.orionlighting.com/about/patents/>

### Rated Life

L70 >150,000 hours

For calculated L70 hours, please contact an Orion representative

### Warranty

Orion LED ISON™ class fixtures are covered by a five-year limited warranty, ten-year limited warranty optional. Please contact Orion for additional details. Accessories and individual components are covered by separate OEM supplier warranties.

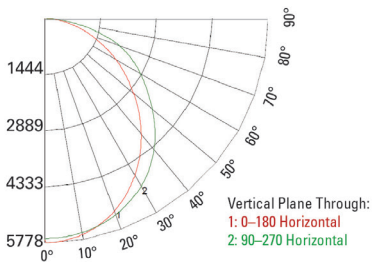


### Performance Information, No Lens<sup>2</sup>

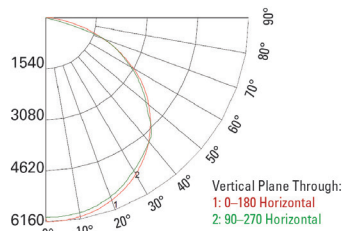
Series	Nominal Lumen Code	Actual Lumens	Input Voltage	Wattage	LPW	CCT	CRI	Input Current	Power Factor
<b>4 ft.</b>									
LSAR1	A1	9,105lm	120v	53w	171	4000K	≥80	0.45A	>.90
LSAR1	A1	9,105lm	277v	53w	173	4000K	≥80	0.19A	>.90
LSAR1	A1	9,160lm	347v	56w	163	4000K	≥80	0.16A	>.90
LSAR1	A1	9,160lm	480v	58w	158	4000K	≥80	0.12A	>.90
<b>8 ft.</b>									
LSAR1	D1	18,210lm	120v	107w	171	4000K	≥80	0.89A	>.90
LSAR1	D1	18,210lm	277v	106w	173	4000K	≥80	0.38A	>.90
LSAR1	D1	18,320lm	347v	113w	163	4000K	≥80	0.32A	>.90
LSAR1	D1	18,320lm	480v	116w	158	4000K	≥80	0.24A	>.90

### Photometrics

#### D1 LFA 840



#### D1 NOL 840



### Ambient Operating Temperatures<sup>4</sup>

Nominal Lumen Code	Standard Range
All Lumen Packages	-20°C to 45°C [-4°F to 113°F]

### Physical Information

Length	Width	Depth	Weight <sup>3</sup>
4 ft.	9.75"	4.00"	5.00lbs.
8 ft.	9.75"	4.00"	10.00lbs.

### Fully Retrofitted Existing Fixture



4' Version



8' Version with Sensor

### Ordering Information Example (NOTE: No dashes or spaces unless noted below)

Series	Fixture Size	Nominal Lumen Code	Voltage	Driver Type	Lens Options	CRI; Color Temp	Fixture Body Type	Control Options	Packaging Options
LSAR1	8	D1	UNV	FDXX	LFA	840	LT	-EN	[Blank]

### Ordering Information

Series	Fixture Size	Nominal Lumen Code <sup>1</sup>	Voltage	Driver Type <sup>5</sup>	Lens Options	CRI; Color Temp	Fixture Body Type	Control Options	Packaging Options
<b>LSAR1</b> = ISON Linear LED Streamline Retrofit, Gen 1	<b>4</b> = 4 ft. <b>8</b> = 8 ft.	<b>4 ft.</b> <b>A1</b> = 9,000lm  <b>8 ft.</b> <b>D1</b> = 18,000lm	<b>UNV</b> = 120v-277v <b>347</b> = 347v <b>480</b> = 480v	<b>FDXX</b> = Full Dimming 0-10v	<b>NOL</b> = No Lens <b>LFA</b> = Lens, Frosted Acrylic	<b>840</b> = 80CRI; 4000K	<b>ET</b> = Eaton T5 <b>LT</b> = Lithonia T5 <b>LTT8</b> = Lithonia T8 <b>AT</b> = Austin T8	<b>[Blank]</b> = No Option <b>-EN</b> = Enlighted Wireless Sensor Embedded in Driver Channel (works for fixtures mounted 40' or less) <sup>4</sup>	<b>[Blank]</b> = Bulk Pack <b>-SP</b> = Single Pack

\*Only available for 8' fixture models.

### Fixture Options (Factory Installed)



Enlighted Sensor - 8' Models Only (-EN)

### Additional Specification Information

<sup>1</sup> For actual lumens, see performance table

<sup>2</sup> Actual performance may vary by up to ±10% of values listed; facility factors and fixture options can affect performance values

<sup>3</sup> Width/Weight will vary based on option selection

<sup>4</sup> -EN is limited to 0°C (32°F) environments. Contact Customer Service regarding additional commissioning and back end control system pricing

<sup>5</sup> "XX" is a character placeholder for the manufacturing configuration