

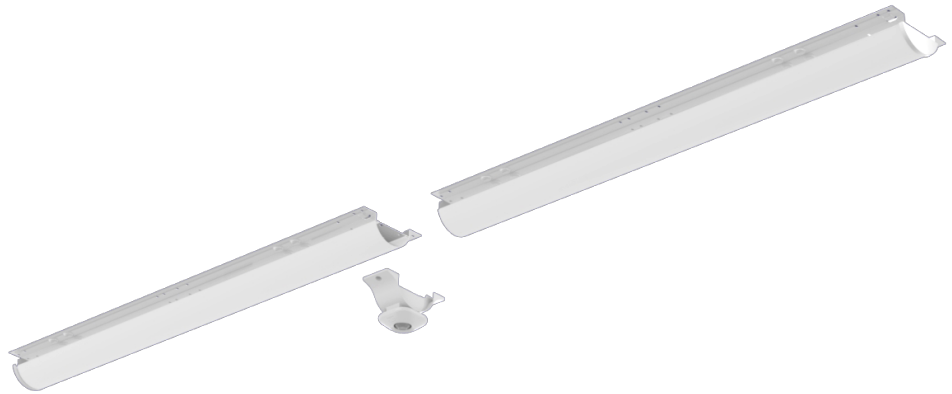
LMAR1

Applications

The ISON™ LMAR1 is ideal for retrofitting existing linear fluorescent high bay fixtures to LED. For use in applications such as retail, manufacturing, distribution, and warehouses facilities.



LMAR14A1UNVFDXXLFA84046
[4' Module Shown for 4' Retrofit]



LMAR18D1UNVFDXXLFA84096-EN
[Two 4' Modules Shown for 8' Retrofit]

Features

- Available in 4' kit modules that retrofit 4' and 8' fixtures
- Frosted acrylic matte contoured lens available
- LED modular engines made of lightweight aluminum, with pre-coated white finish for better thermal dissipation
- Retrofit light engine is designed to fit in existing linear fluorescent high bay fixture channel for ease of retrofit install
- Bulk pack standard. Single pack available
- For bulk pack standard, six 8' LMAR1 fixtures per box, 7 boxes per skid for 42 fixtures total
- Enlighted Control Option available for IoT applications

Electrical

- Available in 120v-277v, 347v and 480v
- Full Dimming [0-10v] fixtures

Ambient Operating Range

See ambient operating table on page 2

Fixture Certification & Listings

- UL Classified
- Buy American Act Compliant
- DesignLights Consortium® premium qualified luminaire
- Visit the [DLC QPL](http://www.dlcqpl.com) for listed models

Patent Information

Orion is serious about intellectual property. This product may be covered by one or more patents. Patent information available at <http://www.orionlighting.com/about/patents/>

Rated Life

L70 > 150,000 hours

For Calculated L70 hours, please contact an Orion representative

Warranty

Orion LED ISON™ class fixtures are covered by a five-year limited warranty, ten-year limited warranty optional. Please contact Orion for additional details. Accessories and individual components are covered by separate OEM supplier warranties.

PATENT | PENDING

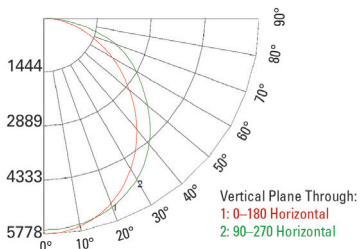


Performance Information, No Lens²

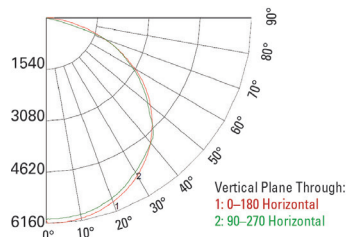
Series	Nominal Lumen Code	Actual Lumens	Input Voltage	Wattage	LPW	CCT	CRI	Input Current	Power Factor
4'									
LMAR1	A1	9,253lm	120v	54w	170	4000K	≥80	0.45A	>.90
LMAR1	A1	9,253lm	277v	55w	168	4000K	≥80	0.19A	>.90
LMAR1	A1	9,024lm	347v	58w	155	4000K	≥80	0.17A	>.90
LMAR1	A1	9,024lm	480v	59w	152	4000K	≥80	0.12A	>.90
8' (Two 4' Modules)									
LMAR1	D1	18,340lm	120v	107w	172	4000K	≥80	0.89A	>.90
LMAR1	D1	18,340lm	277v	106w	174	4000K	≥80	0.38A	>.90
LMAR1	D1	18,380lm	347v	112w	164	4000K	≥80	0.32A	>.90
LMAR1	D1	18,380lm	480v	114w	160	4000K	≥80	0.24A	>.90

Photometrics

D1 LFA 840



D1 NOL 840



Ambient Operating Temperatures⁴

Nominal Lumen Code	Standard Range
All Lumen Packages	-20°C to 45°C [-4°F to 113°F]

Physical Information³

Length	Width	Depth	Weight
See Page 3 for Dimensions			5.00lbs.

Fully Retrofitted Existing Fixture

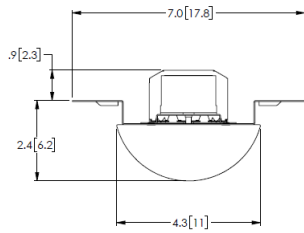


4' Version

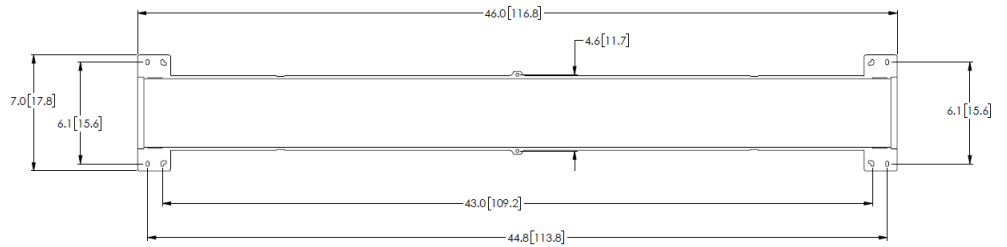


8' Version with Sensor

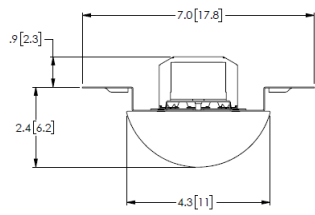
Retrofit Physical Dimensions



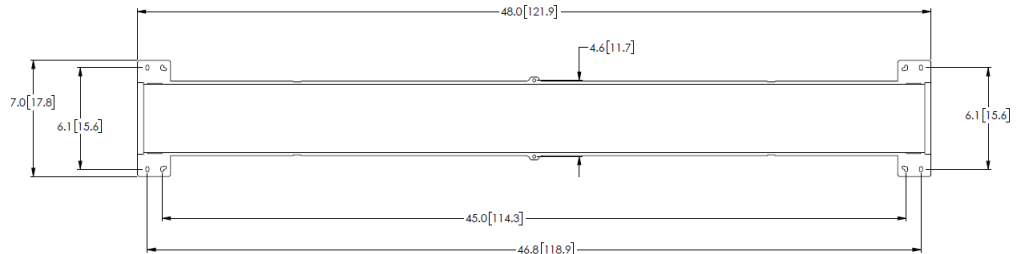
46" Width



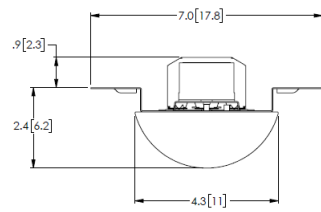
46" Length



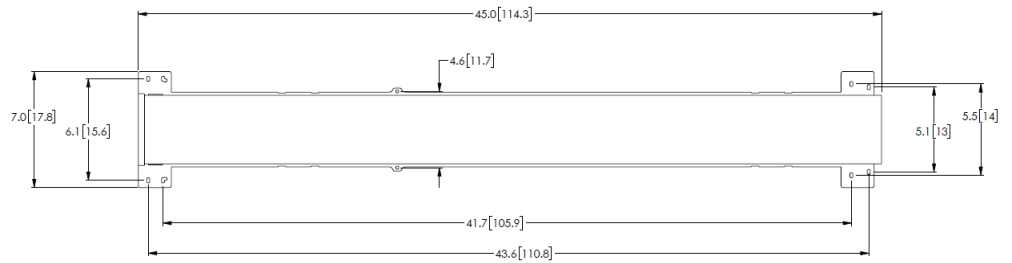
48" Width



48" Length



92"/96" Width



92"/96" Length

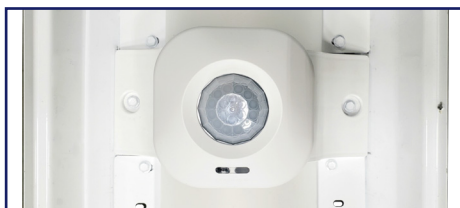
Ordering Information Example (NOTE: No dashes or spaces unless noted below)

Series	Fixture Size	Nominal Lumen Code	Voltage	Driver Type	Lens Options	CRI; Color Temp	Fixture Body Type	Control Options	Packaging Options
LMAR1	8	D1	UNV	FDXX	LFA	840	92	-EN	[Blank]

Ordering Information

Series	Fixture Size	Nominal Lumen Code ¹	Voltage	Driver Type ⁵	Lens Options	CRI; Color Temp	Fixture Body Type	Control Options	Packaging Options
LMAR1= ISON Linear LED Module Retrofit, Gen 1	4= 4' 8= 8'	4' A1= 9,000lm 8' D1= 18,000lm	UNV= 120v-277v 347= 347v 480= 480v	FDXX= Full Dimming 0-10v	NOL= No Lens LFA= Lens, Frosted Acrylic	840= 80CRI; 4000K	4' 46= 46" Length 48= 48" Length 8' 92= 92" Length 96= 96" Length	[Blank]= No Option -EN= Enlighted Wireless Sensor Embedded in Driver Channel (works for fixtures mounted 40' or less) ⁴ ⁴ Only available for 8' fixture models.	[Blank]= Bulk Pack -SP= Single Pack

Accessories (Field Installed)



Enlighted Sensor Option- 8' Models Only (-EN)

Additional Specification Information

¹ For actual lumens, see performance table

² Actual performance may vary by up to ±10% of values listed; facility factors and fixture options can affect performance values

³ Physical information described for 4' module weight. Weight will vary on option selected

⁴ -EN is limited to 0°C (32°F) environments. Contact Customer Service regarding additional commissioning and back end control system pricing

⁵ "XX" is a character placeholder for the manufacturing configuration