

# LDRE2 HARRIS LED LDR<sup>®</sup> TROFFER RETROFIT, GEN 2



HIGHEST PERFORMING TROFFER DOOR RETROFIT KIT • **161 LPW**

**1 PERFORMANCE**  
LDRE2 High Efficacy offers the highest performing troffer door retrofit kit on the market at 161 LPW.

**2 3.5x LIFE\***  
The LDRE2 L70 rating at 179,000 hours is over 3.5x as long as the typical LED tube retrofit alternative while providing full configurability, controllability, more energy savings and a new look.

**3 ONE PIECE FULLY ASSEMBLED**  
Lightweight unibody design arrives factory pre-assembled, configured to order.

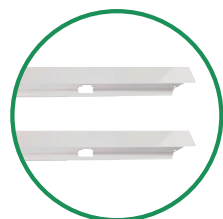
**4 QUICK LATCH DOOR FRAME**  
Hinge and latch system mimics existing door frame system and allows for ease of install and access.

**5 LIGHTWEIGHT ALUMINUM**  
Reduces ceiling grid load, improves contractor handling during installation, and maximizes heat transfer away from critical electronic components.

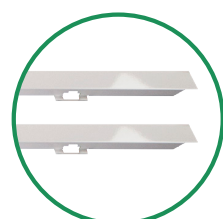
**6 UPGRADE ROOM AESTHETICS**  
LDRE has a clean and modern design with matte finish contour lens.

**8 DURABLE PREMIUM COMPONENTS**  
Top tier electrical components from suppliers with brand and quality integrity.

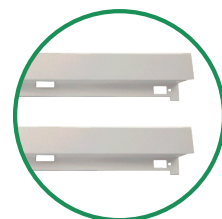
**7 QUICK INSTALLATION**  
The original patented ceiling grid adapter bracket system allows for quick installation without disrupting the ceiling grid.



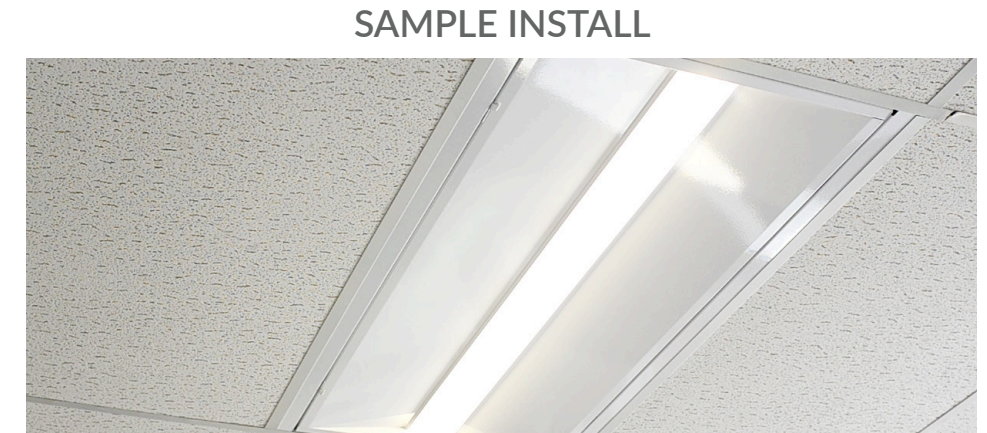
Standard Bracket



Plenum Bracket



Lift Bracket

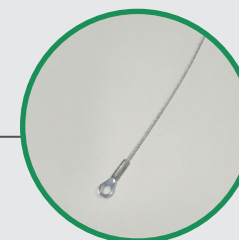


SAMPLE INSTALL



FAST SINGLE PERSON INSTALL

**CONTROLS & ACCESSORIES**  
Hundreds of factory or field installed options available.



Seismic Cable Kit



Battery Backup



Integrated Control

Available in lumen packages from 2,000 to 4,000 lumens in 1' x 4' and 2' x 2' and up to 8,000 lumens in 2' x 4'. 120v-277v  
\*LDRE2 CH LED rated life based on L70 LDRE2CHUNVFDXX84024M @ 25C ambient vs. Orion's TLEDB5 retrofit LED tubes.

