

HARRIS LED HIGH BAY UFO, GEN 3



1 COMPACT, ROBUST DESIGN WITH 6 KV SURGE PROTECTION

Ideal for harsh environments in agricultural, industrial and manufacturing applications with an IP65 and UL Wet Rating. 6kV/3kA surge protection comes standard per ANSI C82.77-5.

2 SUPERIOR THERMAL DESIGN - UP TO 157 LPW

Die cast aluminum housing maximizes heat transfer away from critical electronic components. Fixture is rated up to 50°C (122 °F).

3 3.5x LIFE* L70 RATING AT 173,000 HOURS

The HHUF3 L70 rating at 173,000 hours is over 3.5x as long as the typical LED tube retrofit alternative while providing full configurability, controllability, more energy savings and a new look.

4 LIGHT DISTRIBUTION OPTIONS

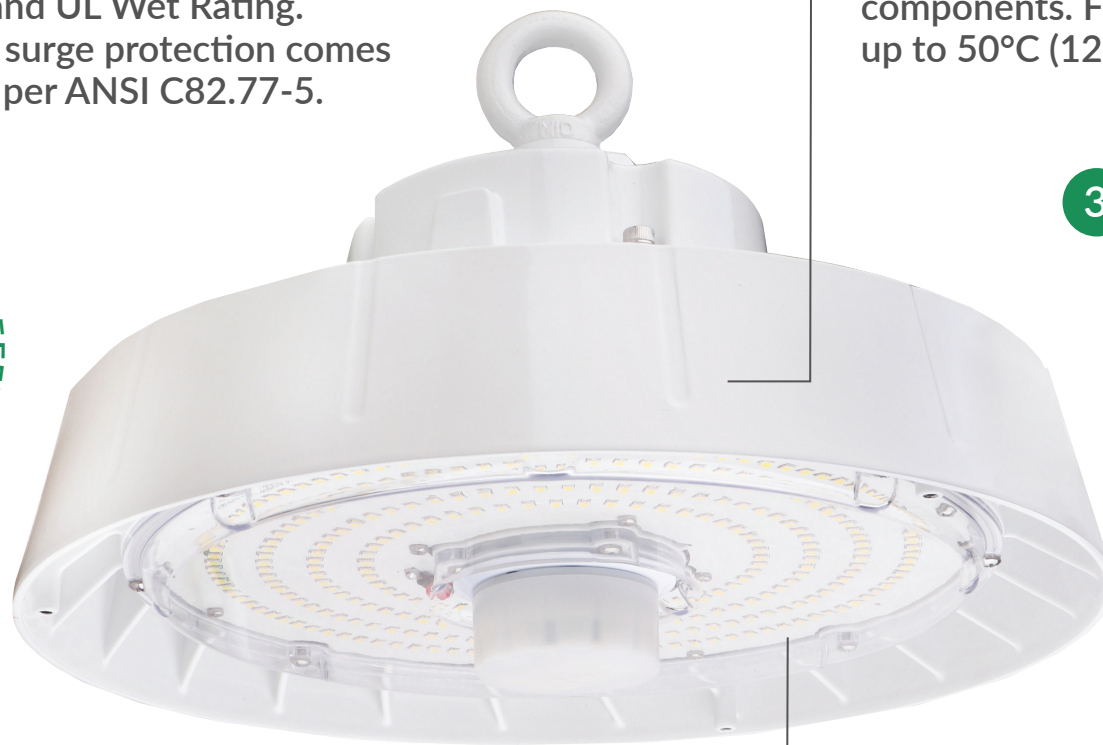
HHUF3 is available with three light distribution options to provide the ideal distribution and minimize glare: lens, lens with aluminum reflector, and lens with polycarbonate refractor.

5 MICROWAVE SENSOR

Fixture comes pre-wired from the factory for easy field installation. Remote controlled sensor for easy commissioning with daylight and occupancy detection.

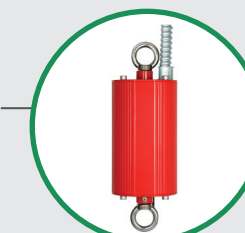
6 MOUNTING METHODS

Fixture ships with standard eye bolt. Pendant hook mount, and U Bracket options available for field installation.

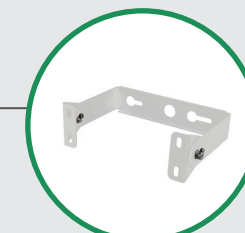


CONTROLS & ACCESSORIES

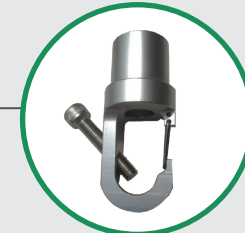
Field Installed



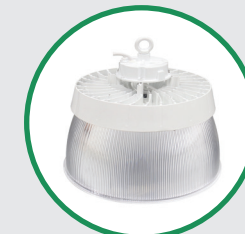
Battery Back Up



U Bracket



Pendent Hook Mount

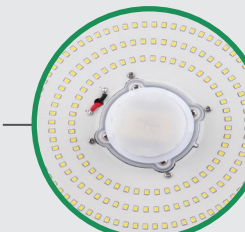


Polycarbonate Refractor



Aluminum Reflector

Factory Installed



Pre-wired for Sensor Module



6' Whip



Black Color Option

Available in lumen packages from 14,000 to 35,000 lumens. 120v-277v, 347v, 480v
*HHUF3 LED rated life based on L70 HHUF3B1UNV @ 25C ambient vs. Orion's TLEDB5 retrofit LED tubes.

